



November 2, 2023

## BID MEMO 02

Saints – Cafeteria & Viewing Area

23.10.09 CD Set

Please acknowledge receipt of all Bid Memos and/or Addenda on your bid.

**Bid Due:** Friday, November 3, 2023 at 2:00 p.m.

### SUPPLEMENTAL INFORMATION & ATTACHMENTS

1. Revised Drawings Sheets (A6.51 & S4.0)
2. Revised Bid Form: Saints - Cafeteria and Viewing Bid Form 23.11.02 BM03

### ADDITIONAL INFORMATION

1. Elevator Finishes:
  - Interior car panels: #4 brushed stainless steel
  - Flooring: LVT
  - Ceilings: Metal pan
  - Lighting: Recessed can lights
  - Handrail: Flat bar



November 2, 2023

## WOODWARD PROPOSAL FORM

Saints - Cafeteria & Viewing Area

CD Set

Company Name \_\_\_\_\_

Contact Name \_\_\_\_\_

Contact Email \_\_\_\_\_

Date Submitted \_\_\_\_\_

*Please submit this bid form in addition to your standard company form of proposal.*

Acknowledge receipt of the following bid memos / addenda listed below:  Yes  No

Bid Memo / Rev 01 – 23.10.25

Bid Memo / Rev 02 – 23.10.31

Bid Memo / Rev 03 – 23.11.02

Base Bid \_\_\_\_\_

Alternate 01 (Mechanical Equipment Screen on Roof) \_\_\_\_\_

Anticipated Construction Duration \_\_\_\_\_

Long Lead Material Times \_\_\_\_\_

Anticipated Required Lay Down Area Size \_\_\_\_\_



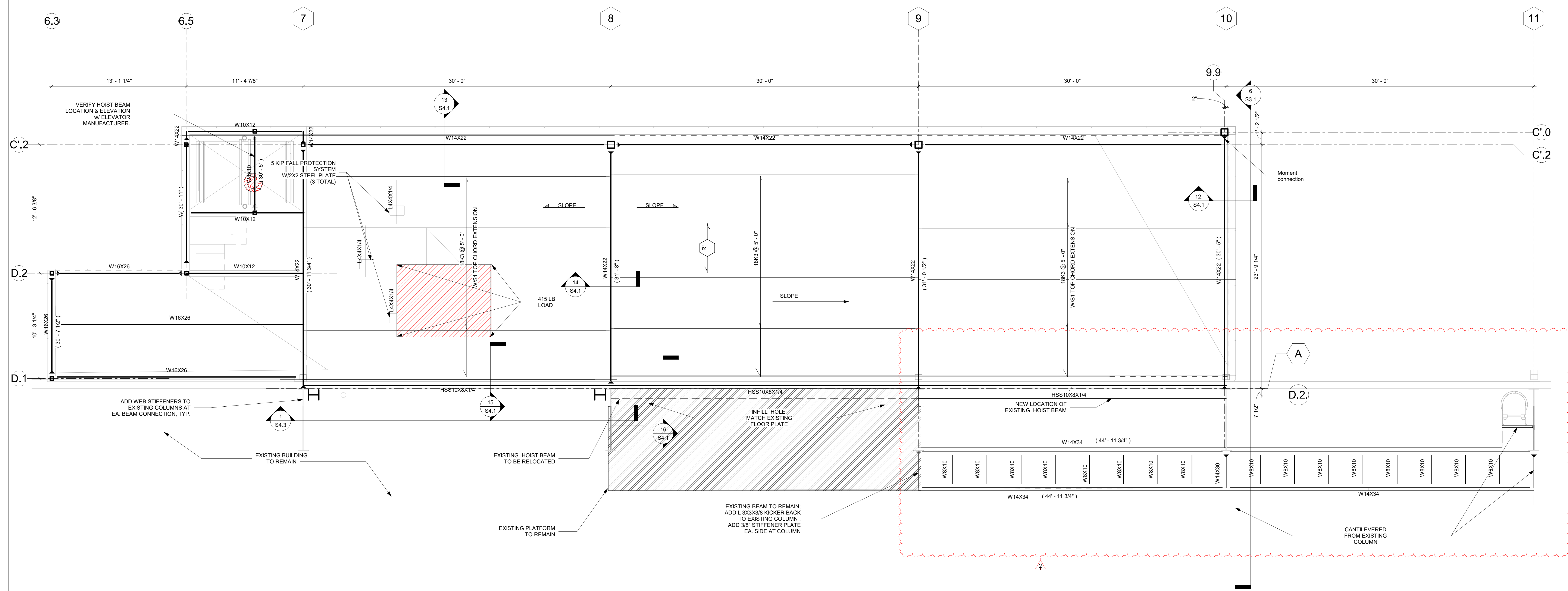


woodward engineering  
 1005 S. NORMAN C. FRANCIS PARKWAY  
 NEW ORLEANS, LA 70122  
 WOODWARDENGINEERING.COM | 504-822-8443

Nicholas Mannix, PE

**FRAMING PLAN NOTES:**

1. TOP OF STEEL ELEVATION IS 29'-0 5/8" UNLESS NOTES THUS (X'-XX") ON PLAN FROM DATUM.
2. SEE DRAWING S0.00 FOR GENERAL NOTES.
3. SEE DRAWINGS S5.0 FOR TYPICAL DETAILS.
4. SLOPE DENOTES SLOPE TOP LOW POINT
5. DENOTES SPAN OF VULCRAFT 1.58 20 GA GALVANIZED METALDECK.



**1** HIGH ROOF FRAMING PLAN  
 S4.0 1/4" = 1'-0"

NEW ORLEANS SAINTS AND PELICANS  
 CAFETERIA AND VIEWING AREA  
 5200 Arlene Drive,  
 Metairie, Louisiana

WDO PROJECT NO. EN142308  
 CONSTRUCTION DOCUMENTS 10/09/23

NO.	REVISION	DESCRIPTION	DATE
1	Revision 1		10/23/23
2	Revision 2		11/09/23

HIGH ROOF FRAMING PLAN

DRAWN BY / Author **S4.0**