

pi architects

3500 Jefferson St. Suite 303
Austin, TX 78731

P: (512) 231-1910
F: (512) 231-1950

www.piarch.com

architecture + master planning
interior + landscape
architecture



WATERSTONE AT BATON ROUGE
ASSISTED LIVING & MEMORY CARE
SIEGEN LANE
BATON ROUGE, LA 70810

ISSUE:
PERMIT SET

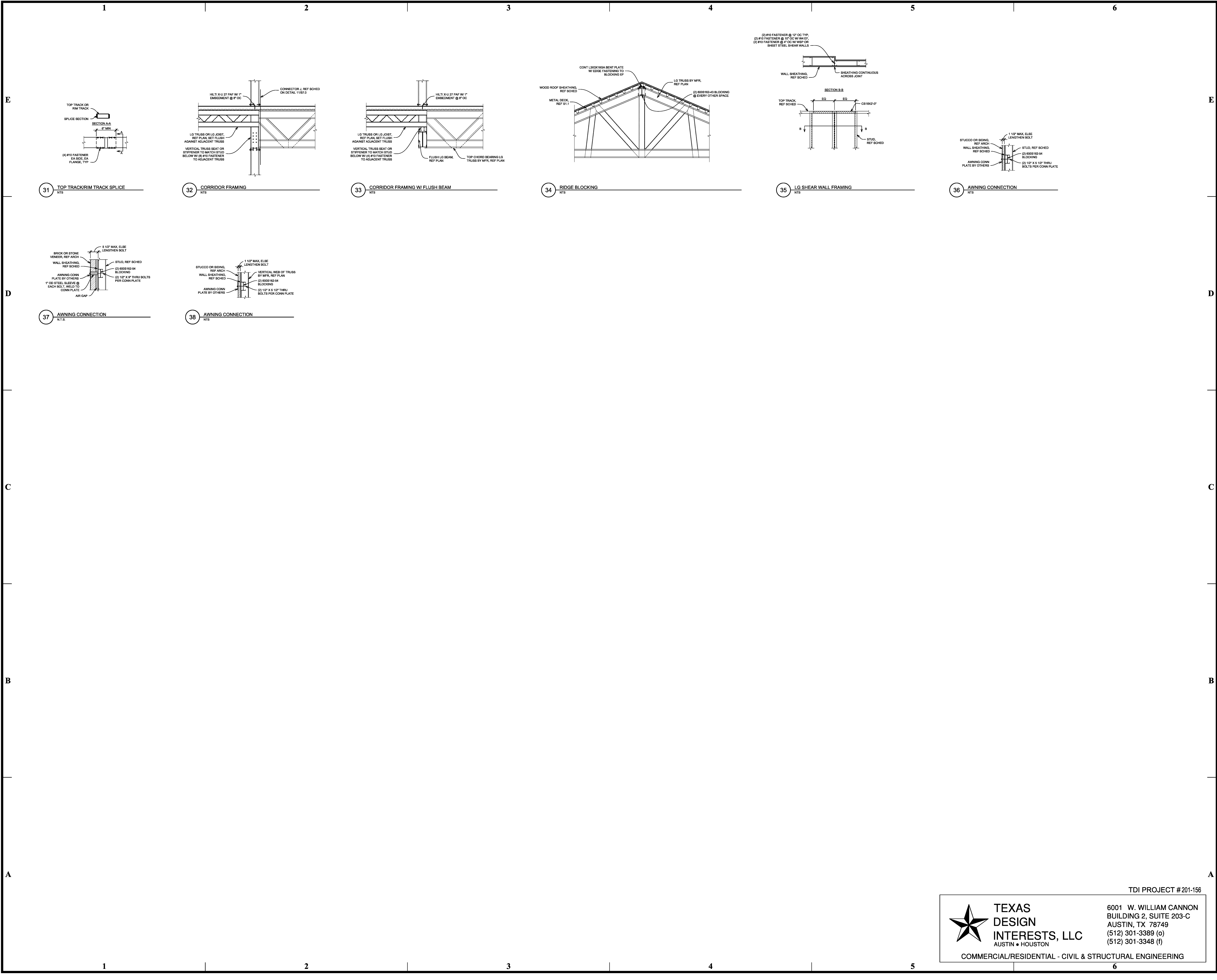
©2015 PI ARCHITECTS, INC.

REVISIONS:

DATE:
3/31/2016
PROJECT NUMBER:
14017
SHEET TITLE:
LG FRAMING
DETAILS

SHEET:

S7.1



TDI PROJECT #201-156

TEXAS DESIGN INTERESTS, LLC
AUSTIN • HOUSTON

6001 W. WILLIAM CANNON
BUILDING 2, SUITE 203-C
AUSTIN, TX 78749
(512) 301-3389 (o)
(512) 301-3348 (f)

COMMERCIAL/RESIDENTIAL - CIVIL & STRUCTURAL ENGINEERING