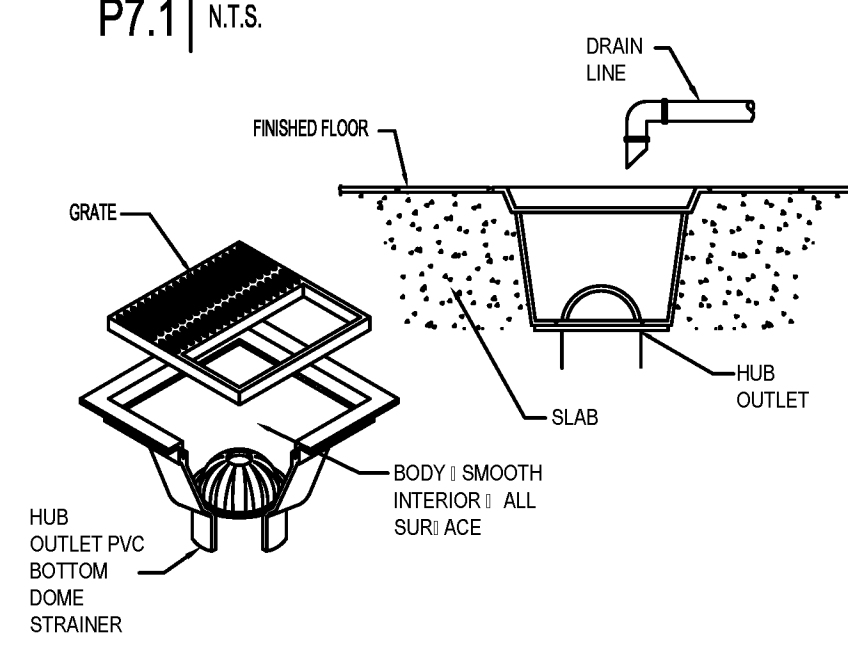
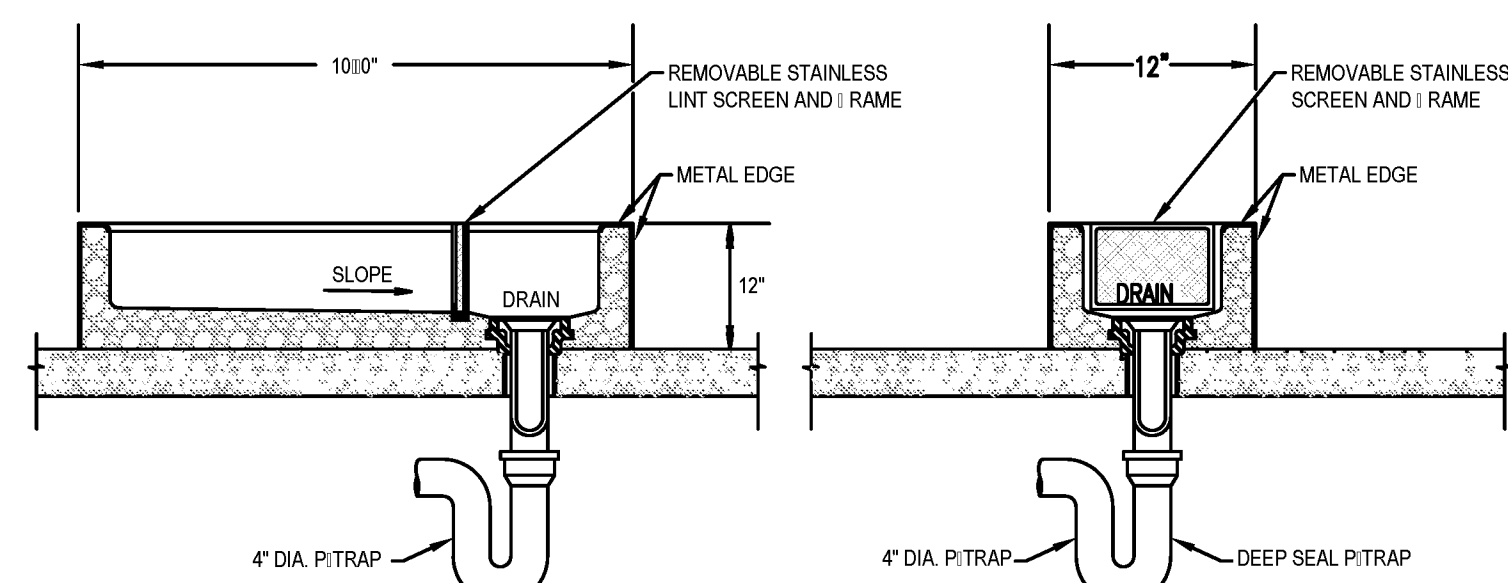


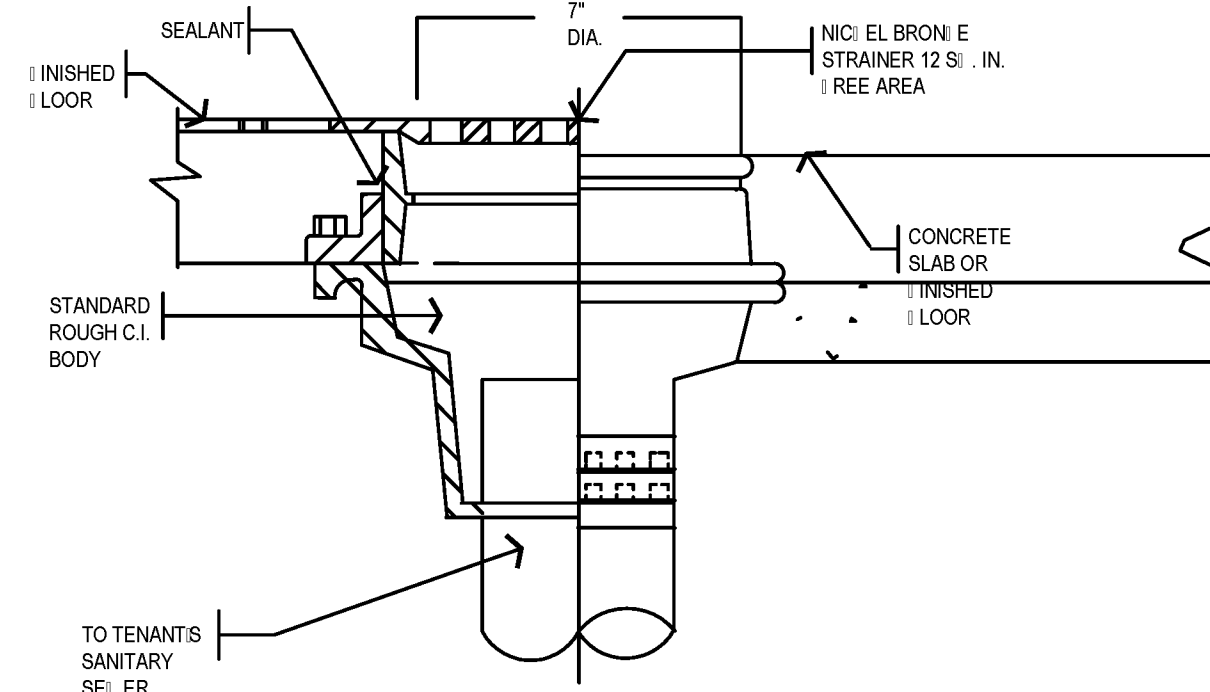
5 TYPICAL FLOOR DRAIN/SINK  
P7.1 N.T.S.



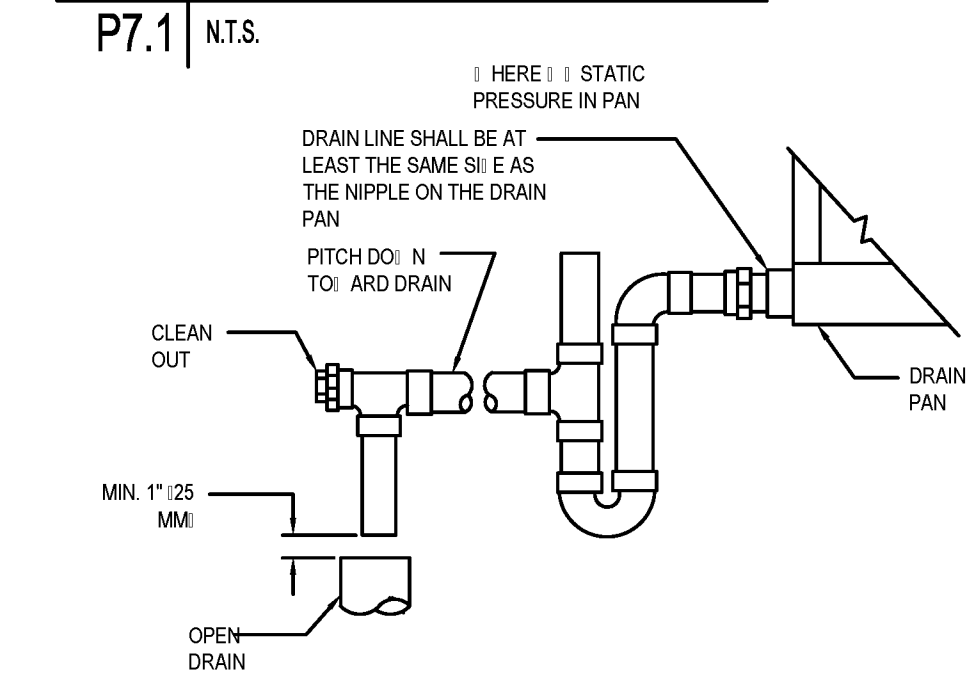
4 FLOOR SINK DETAIL  
P7.1 N.T.S.



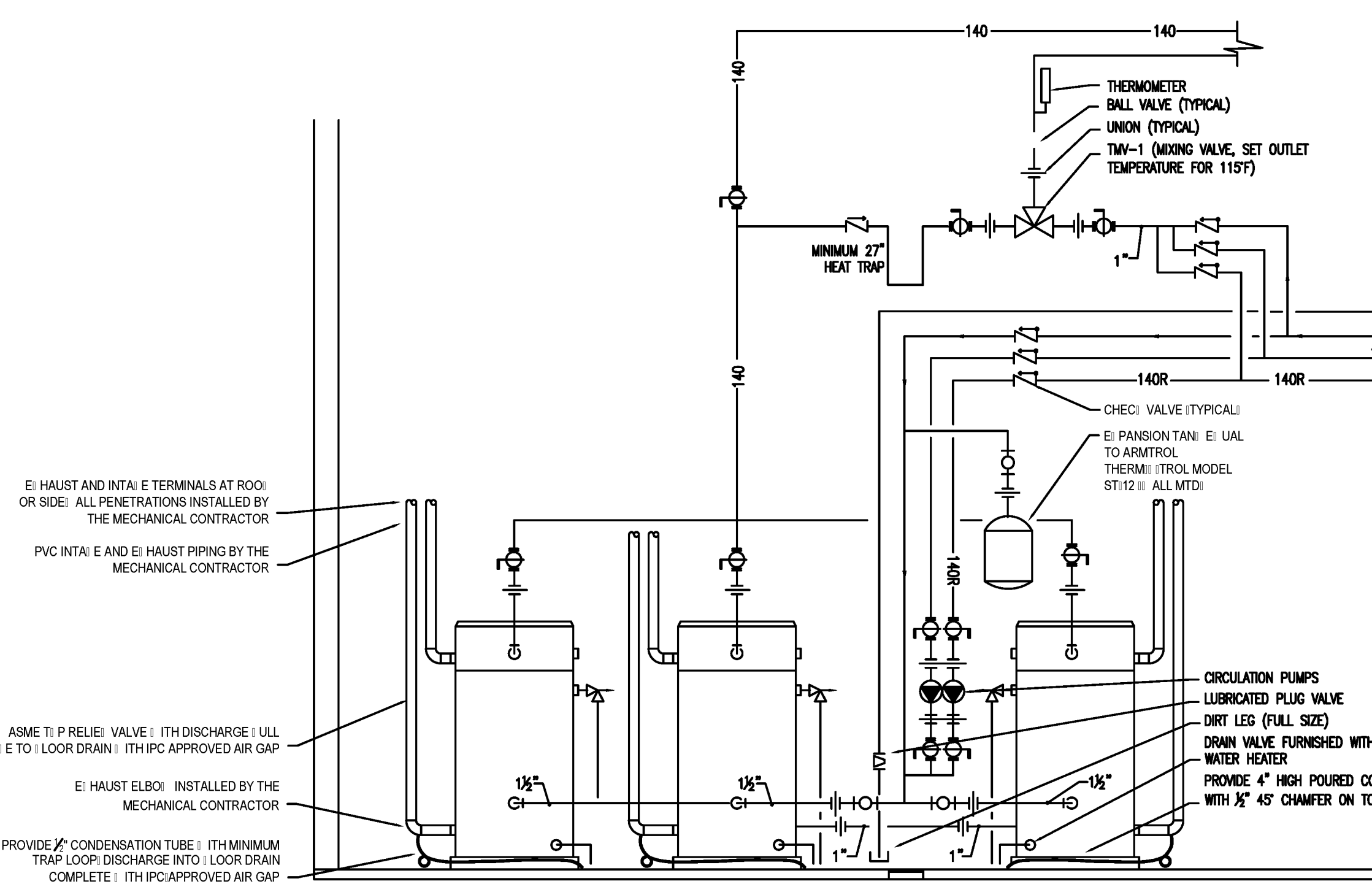
6 LINT TRAP WASHING MACHINE DETAIL  
P7.1 N.T.S.



4 TYPICAL FLOOR DRAIN DETAIL  
P7.1 N.T.S.

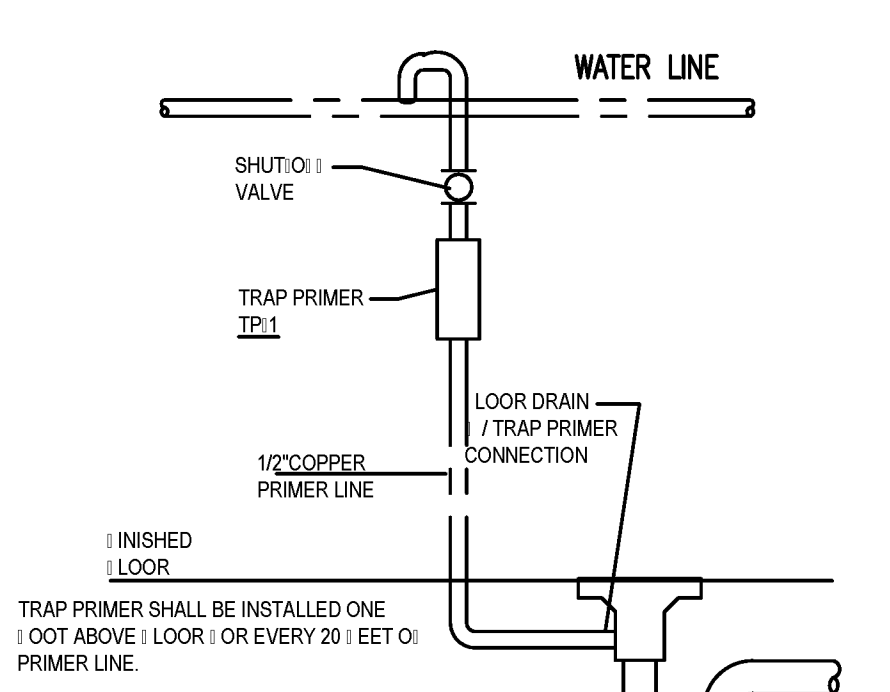


3 AIR HANDLING UNIT DRAIN TRAP DETAIL  
P7.1 N.T.S.

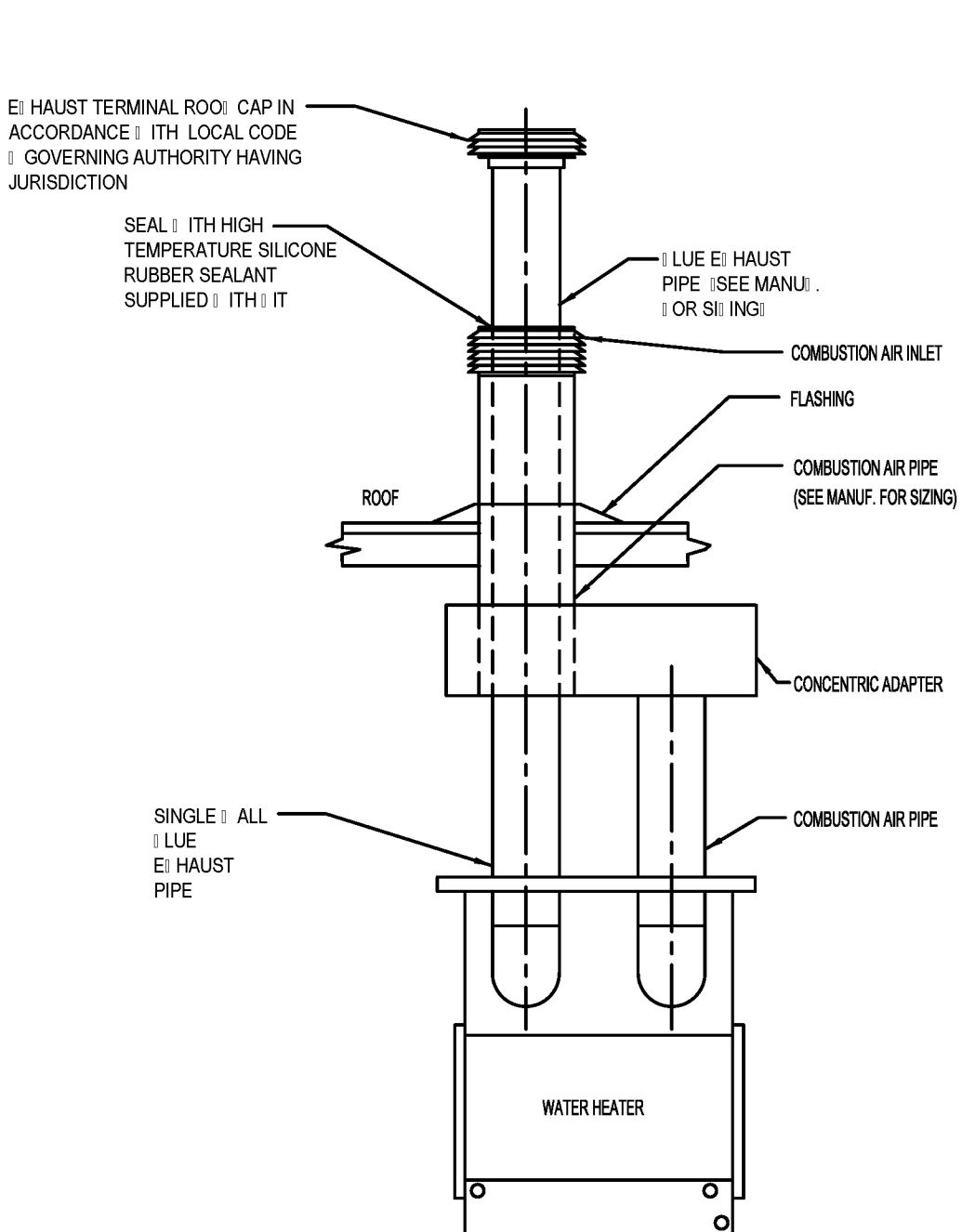


2 DOMESTIC WATER HEATER DWH1  
P7.1 N.T.S.

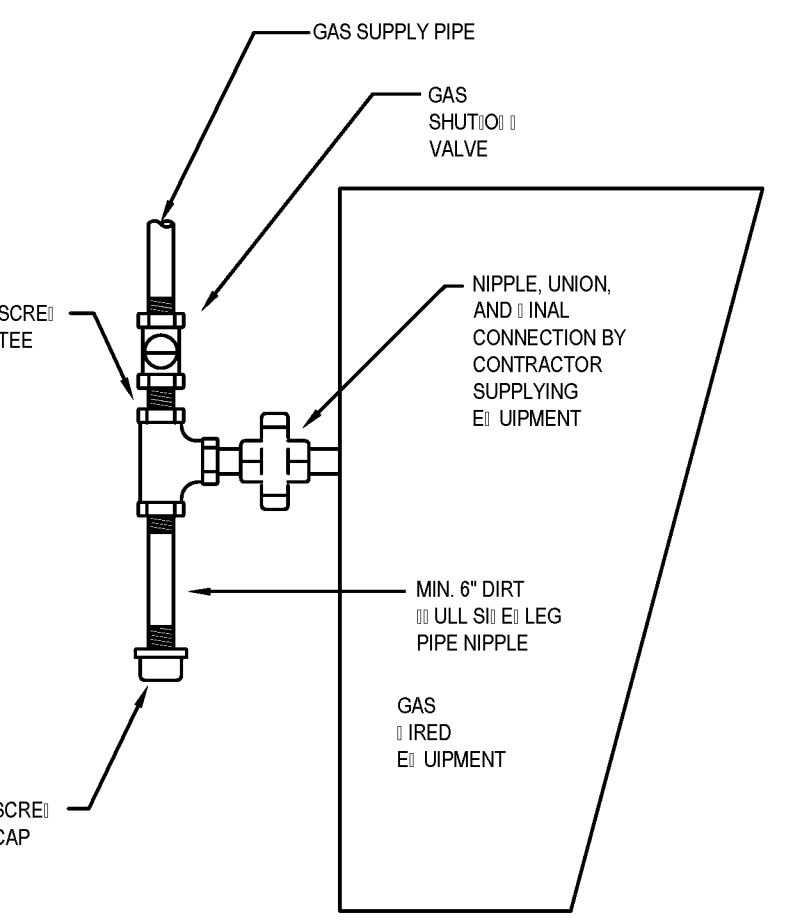
REFER TO SPECIFICATIONS, SCHEDULES AND NOTES FOR ADDITIONAL INFORMATION. PIPING ARRANGEMENT AS SHOWN IS SCHEMATIC. VERIFY ALL CONNECTIONS AND LOCATIONS PER MANUFACTURER'S REQUIREMENTS. ADJUST TO SUIT FIELD CONDITIONS. REFER TO FLOOR PLANS FOR PIPE SIZES. PROVIDE SEISMIC STRAPS OR BRACING WHERE REQUIRED BY THE AUTHORITY HAVING JURISDICTION. PROVIDE HEAT TRAP AND AUTOMATIC VACUUM RELIEF VALVE WHERE REQUIRED BY THE AUTHORITY HAVING JURISDICTION.



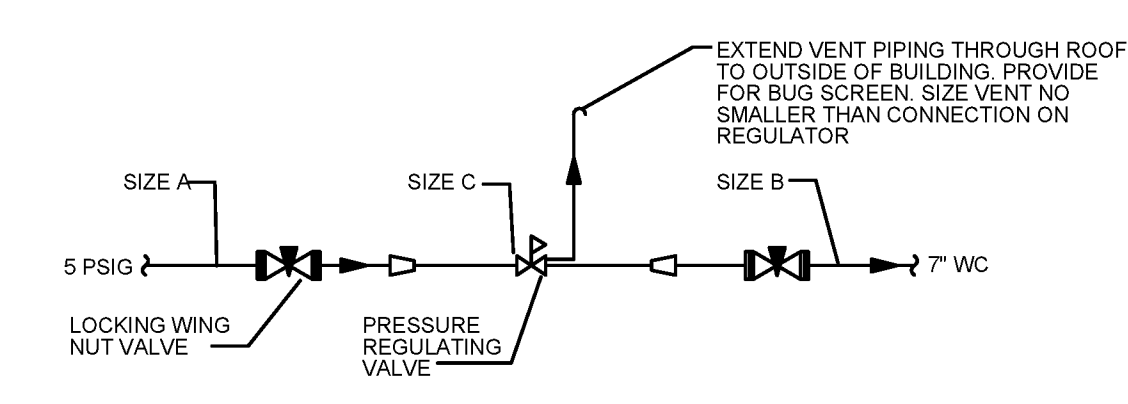
5 TRAP PRIMER DETAIL  
P7.1 SCALE: NONE



1 CONCENTRIC VENT DETAIL  
P7.1 N.T.S.



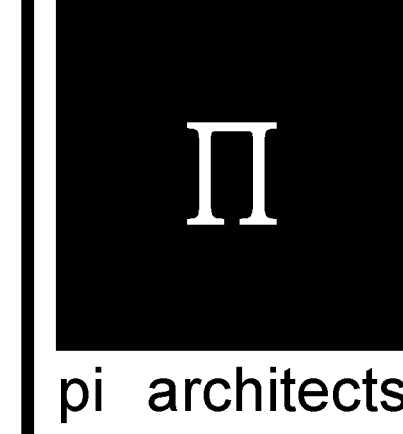
4 GAS CONNECTION DETAIL  
P7.1 N.T.S.



1 GAS PRESSURE REGULATING STATION  
P7.1 N.T.S.

NOTES:  
1. ROOF CUT AND PATCHING BY OTHERS, UNLESS NOTED OTHERWISE.

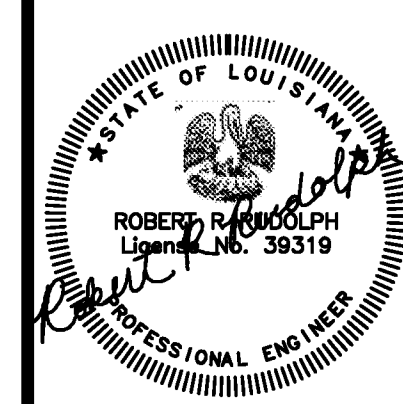
CONTRACTOR NOTE:  
IT IS THE RESPONSIBILITY OF THE CONTRACTOR TO NOTIFY THE ARCHITECT, LANDLORD AND TENANT OF ANY DISCREPANCIES ENCOUNTERED ON THE PLANS OR IN THE EXISTING SITE CONDITIONS PRIOR TO SUBMISSION OF BID.  
BIDDERS ARE TO VISIT THE SITE AND FAMILIARIZE THEMSELVES WITH THE EXISTING CONDITIONS AND SATISFY THEMSELVES AS TO THE NATURE AND SCOPE OF THE WORK. THE BASE BID SHALL REFLECT MODIFICATIONS TO SYSTEMS AND DEVICES AS REQUIRED BY STATE, LOCAL AND FEDERAL CODES, WHETHER INDICATED OR NOT ON CONTRACT DOCUMENTS. THE SUBMISSIONS OF A BID WILL BE EVIDENCE THAT SUCH AN EXAMINATION AND COMPLIANCE WITH GOVERNING CODES/REQUIREMENTS HAS BEEN MADE. LATER CLAIMS FOR LABOR, EQUIPMENT OR MATERIALS REQUIRED, OR FOR OTHER COSTS ENCOUNTERED WHICH COULD HAVE BEEN FORESEEN HAD AN EXAMINATION AND CODES/REQUIREMENTS REVIEW BEEN MADE, WILL NOT BE ALLOWED.



3500 Jefferson St. Suite 303  
Austin, TX 78731  
P: (512) 231-1910  
F: (512) 231-1950

www.piarch.com  
architecture a master  
interior landscape  
interior architecture  
PE Services  
ENGINEERING FOR THE MIDDLE  
4-800-987-0000  
www.pe-services.com

These plans have been properly examined by the undersigned. I have determined that they comply with existing local Louisiana codes, and have been properly adapted to use in this area.



WATERSTONE AT BATON ROUGE  
ASSISTED LIVING & MEMORY CARE  
SIEGEN LANE  
BATON ROUGE, LA 70810

ISSUE: PERMIT SET

©2015, PI ARCHITECTS, INC.  
REVISIONS:

DATE: 03/31/2016  
PROJECT NUMBER: PES 15090  
SHEET TITLE:

PLUMBING DETAILS

SHEET:

P7.1