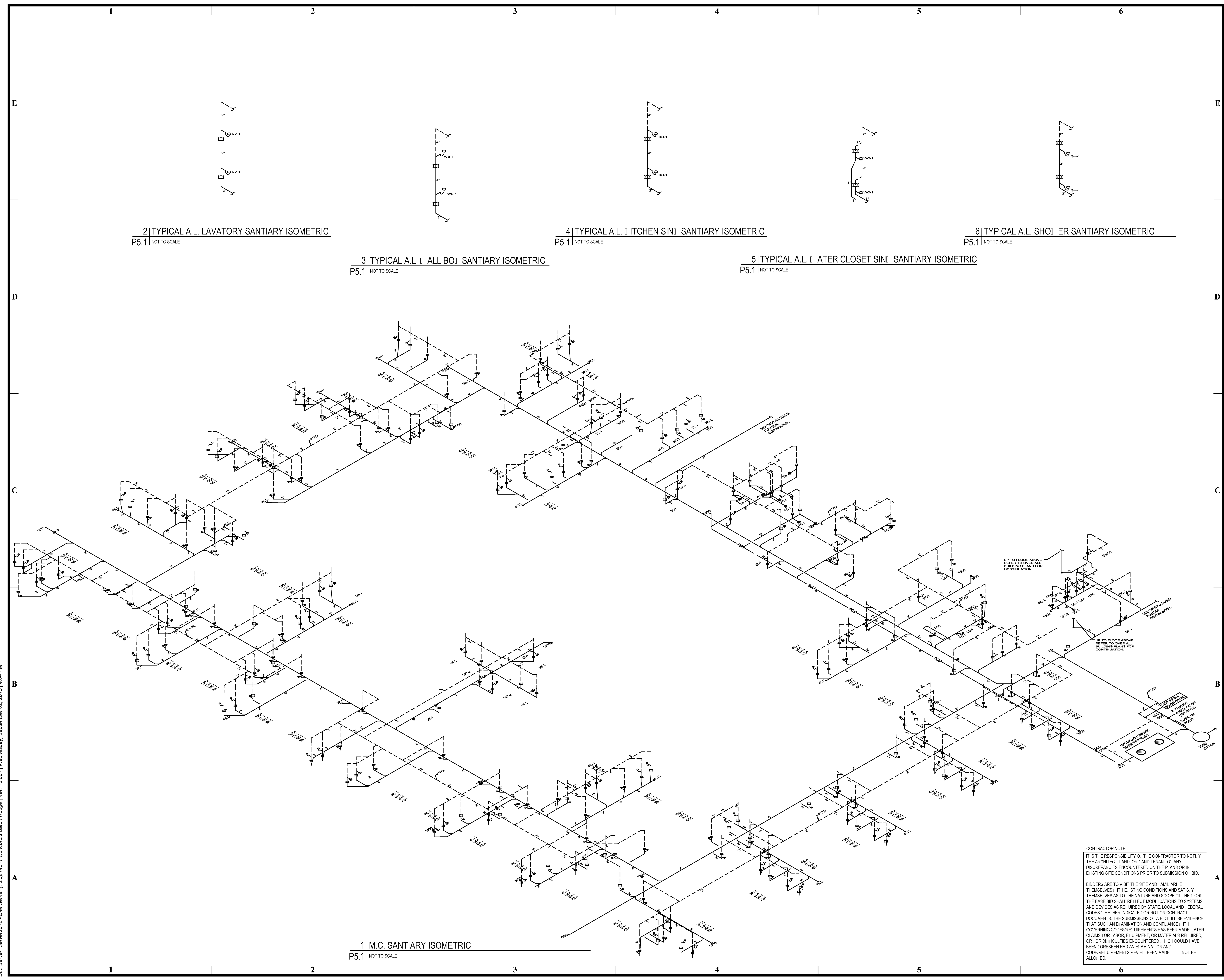


BIM Server: Server2012 - BIM Server (18/01/14)17 Concordia Baton Rouge | Ver: 18.001 | Wednesday, September 02, 2015 | 4:04 PM



2 | TYPICAL A.L. LAVATORY SANITARY ISOMETRIC  
P5.1 | NOT TO SCALE

3 | TYPICAL A.L. ALL BOI SANITARY ISOMETRIC  
P5.1 | NOT TO SCALE

4 | TYPICAL A.L. ITCHEN SINK SANITARY ISOMETRIC  
P5.1 | NOT TO SCALE

5 | TYPICAL A.L. WATER CLOSET SINK SANITARY ISOMETRIC  
P5.1 | NOT TO SCALE

6 | TYPICAL A.L. SHOWER SANITARY ISOMETRIC  
P5.1 | NOT TO SCALE

1 | M.C. SANITARY ISOMETRIC  
P5.1 | NOT TO SCALE

CONTRACTOR NOTE  
IT IS THE RESPONSIBILITY OF THE CONTRACTOR TO NOTIFY THE ARCHITECT, LANDLORD AND TENANT OF ANY DISCREPANCIES ENCOUNTERED ON THE PLANS OR IN EXISTING SITE CONDITIONS PRIOR TO SUBMISSION OF BID.  
BIDDERS ARE TO VISIT THE SITE AND FAMILIARIZE THEMSELVES WITH THE EXISTING CONDITIONS AND SATISFY THEMSELVES AS TO THE NATURE AND SCOPE OF THE WORK. THE BASE BID SHALL REFLECT MODIFICATIONS TO SYSTEMS AND DEVICES AS REQUIRED BY STATE, LOCAL AND FEDERAL CODES. WHETHER INDICATED OR NOT ON CONTRACT DOCUMENTS, THE SUBMISSION OF A BID SHALL BE EVIDENCE THAT SUCH AN EXAMINATION AND COMPLIANCE WITH GOVERNING CODES/REQUIREMENTS HAS BEEN MADE. LATER CLAIMS FOR LABOR, EQUIPMENT, OR MATERIALS REQUIRED, OR FOR DISCREPANCIES ENCOUNTERED WHICH COULD HAVE BEEN FORESEEN HAD AN EXAMINATION AND CODES/REQUIREMENTS REVIEW BEEN MADE, WILL NOT BE ALLOWED.

**pi architects**  
3500 Jefferson St. Suite 303  
Austin, TX 78731  
P: (512) 231-1910  
F: (512) 231-1950  
www.piarch.com  
architecture • master  
interior • landscape  
architecture  
**PE Services**  
ENGINEERING FOR THE BUILT WORLD  
www.pe-services.com  
1-800-867-0000

These plans have been properly examined by the undersigned. I have determined that they comply with existing local Louisiana codes, and have been properly site adapted to use in this area.

STATE OF LOUISIANA  
ROBERT M. COOPER  
Professional Engineer  
License No. 33319

**WATERSTONE AT BATON ROUGE ASSISTED LIVING & MEMORY CARE**  
SIEGEN LANE  
BATON ROUGE, LA 70810

ISSUE: PERMIT SET  
©2015, PI ARCHITECTS, INC.  
REVISIONS:

DATE: 03/31/2016  
PROJECT NUMBER: PES 15090  
SHEET TITLE: SANITARY ISOMETRIC

SHEET: P5.1