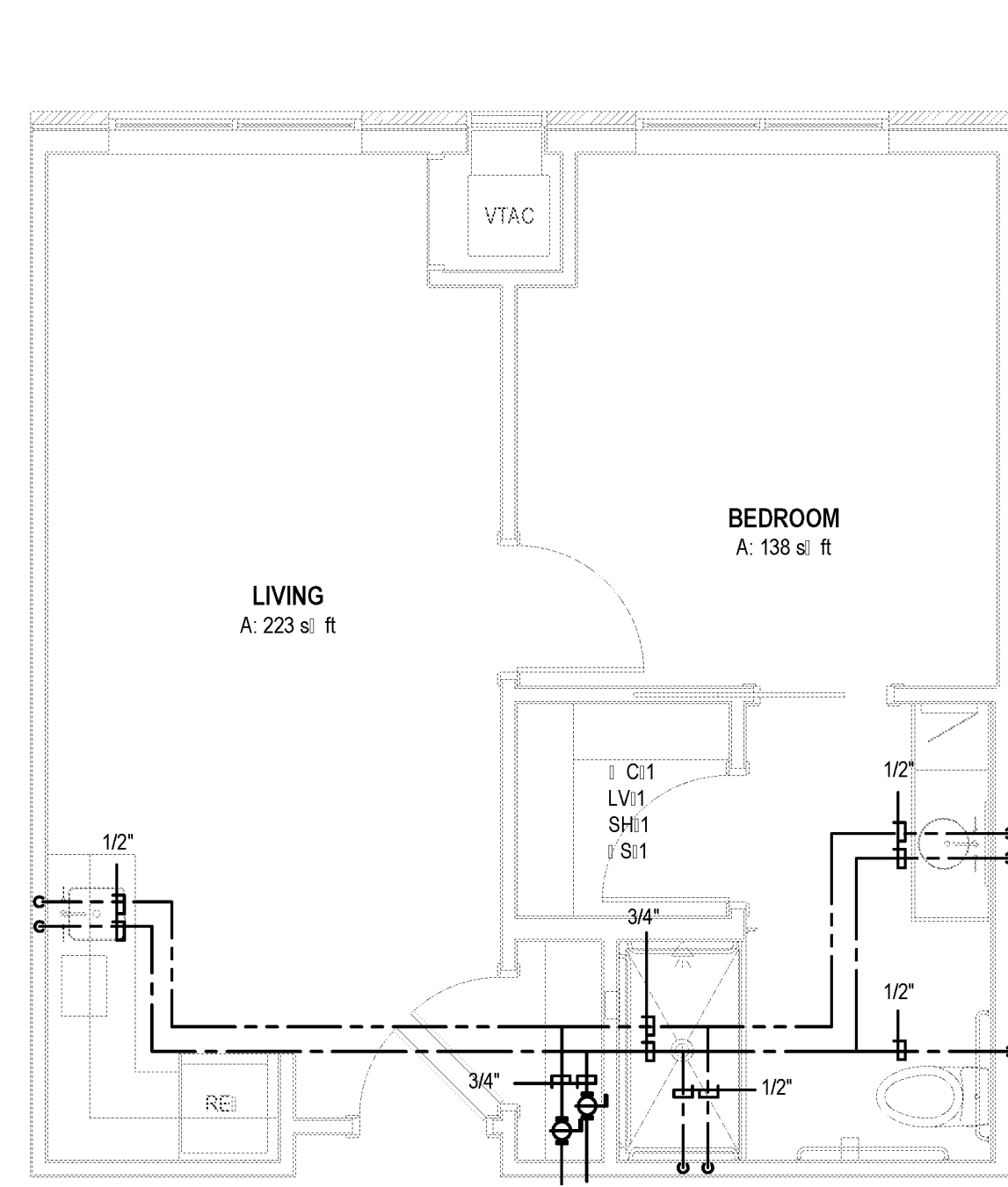
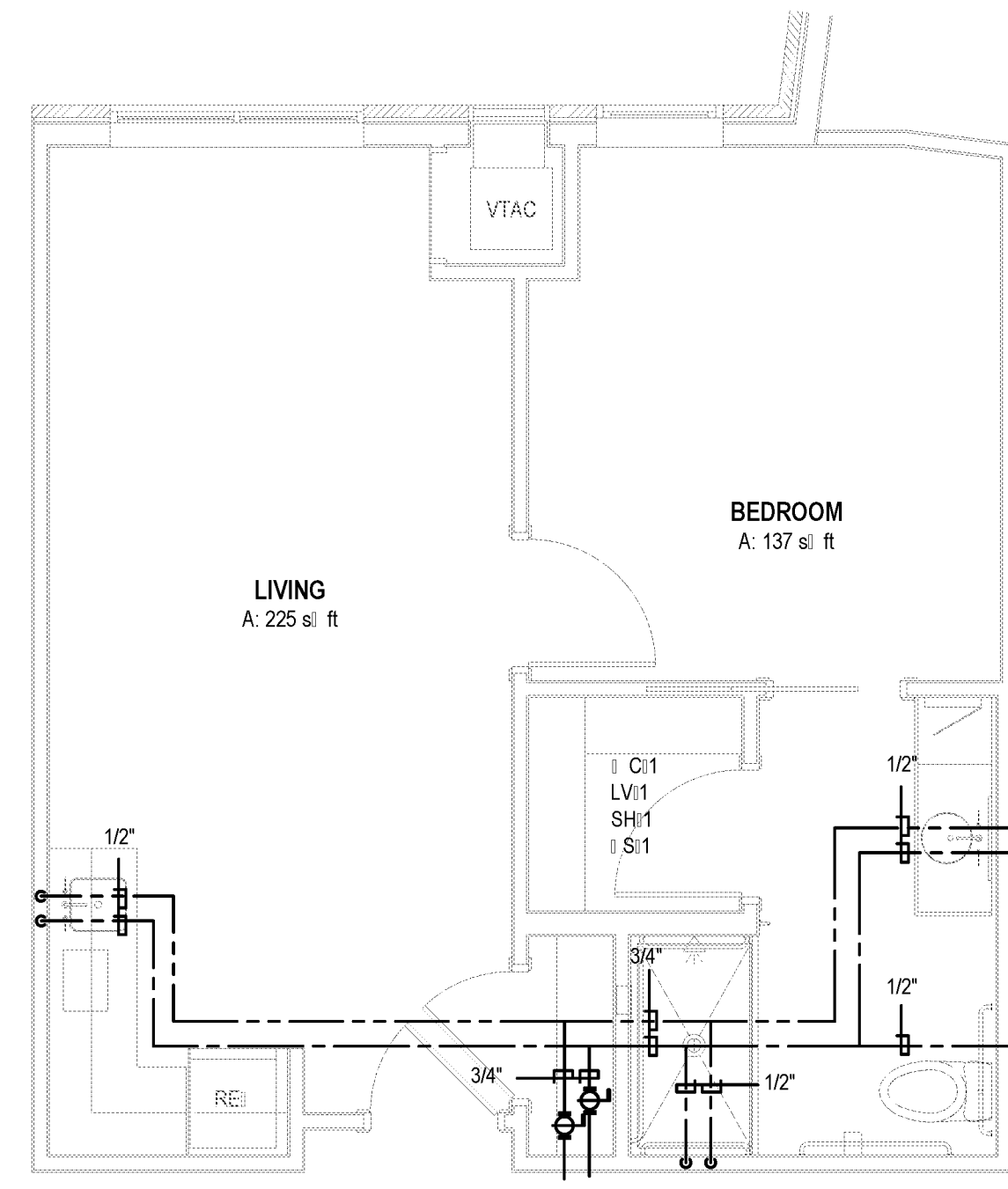


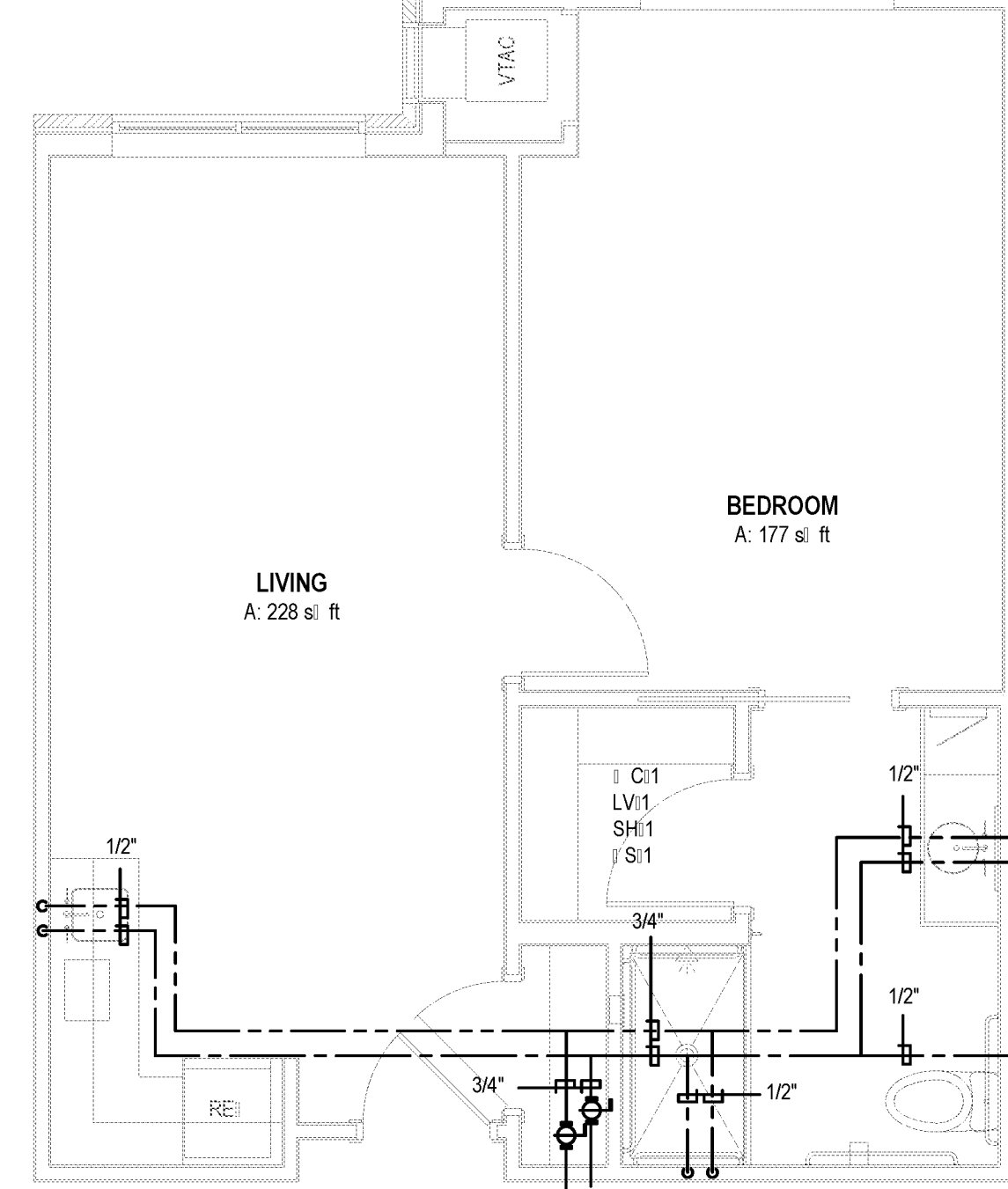
BIM Server: Save/2012 - BIM Server (18/01/14)17 Concordia (Baton Rouge) Ver: 18.001 Wednesday, September 02, 2015 14:04 PM



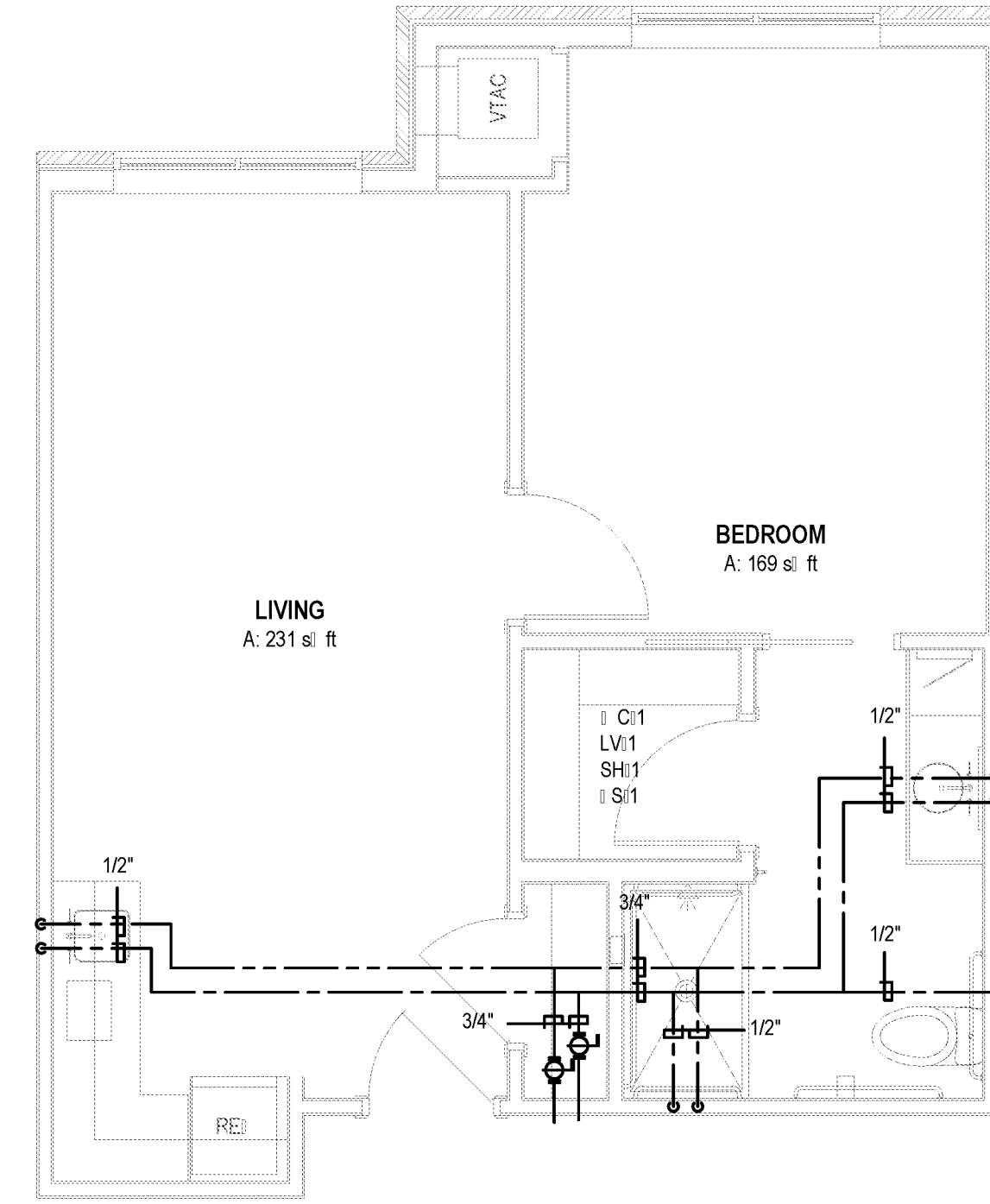
1 | TYPICAL AL UNIT B1.1 & B1.2
P4.2 | 1/4" = 1'-0"



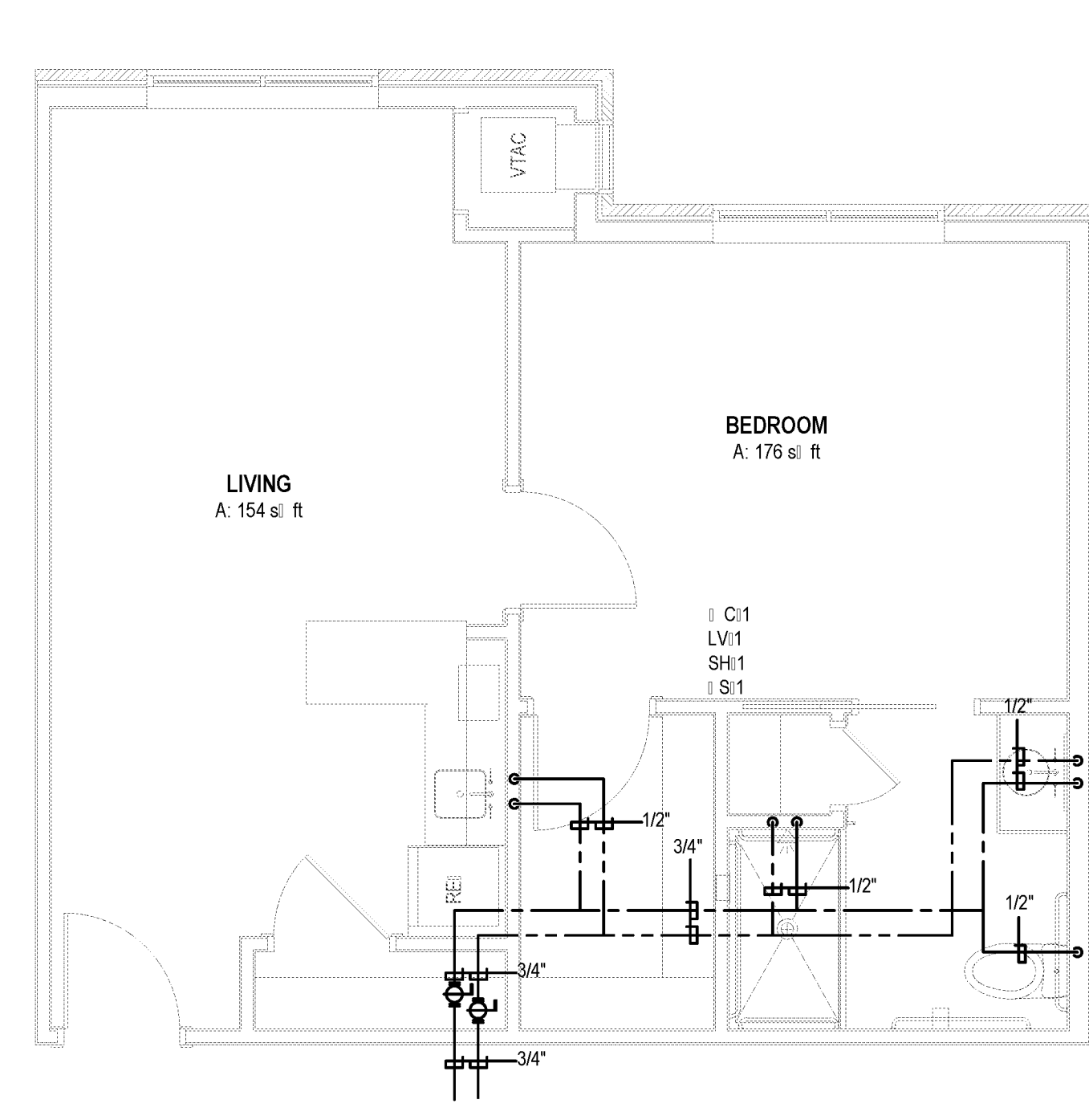
2 | TYPICAL AL UNIT B1.3
P4.2 | 1/4" = 1'-0"



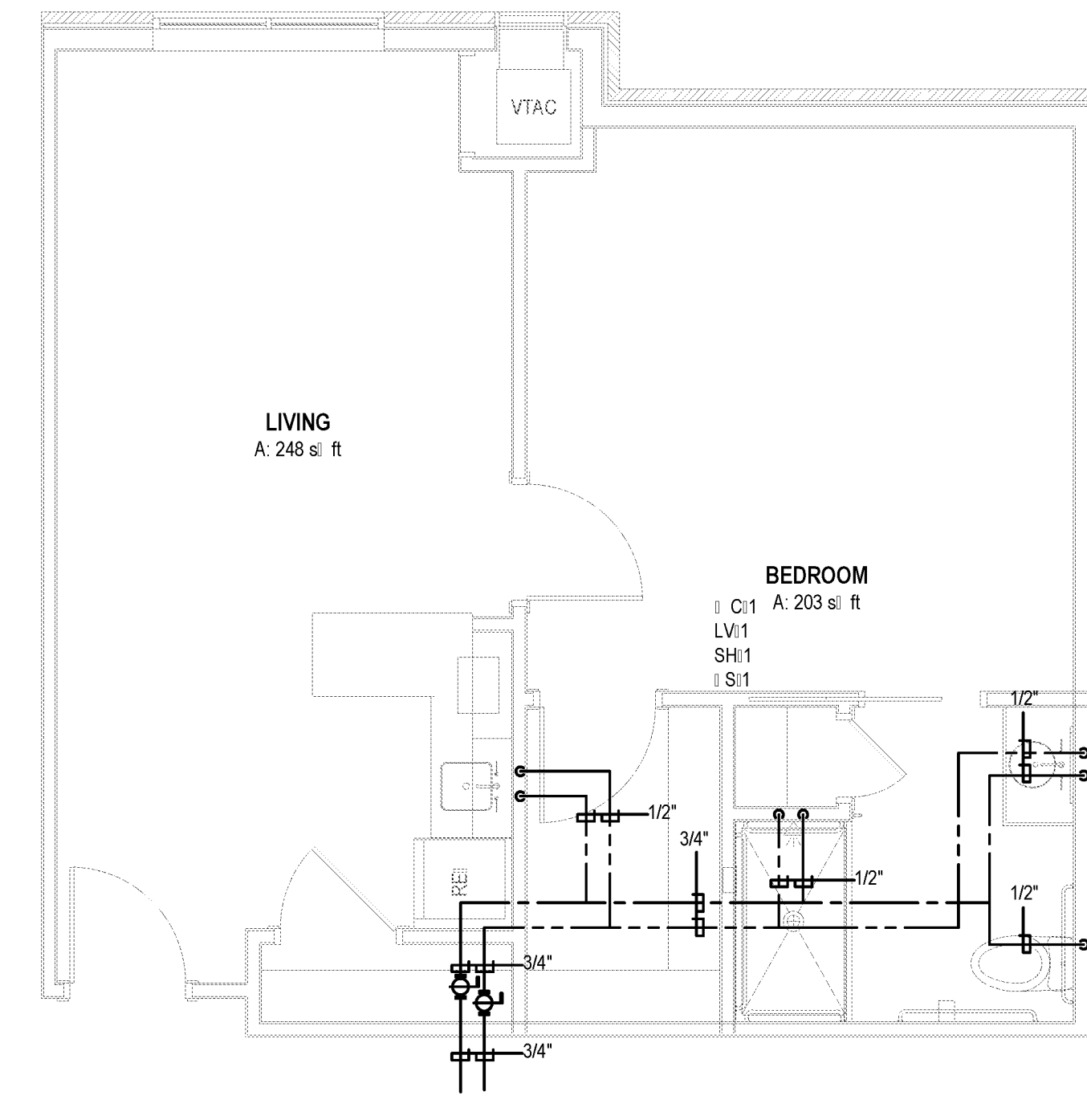
3 | TYPICAL AL UNIT B2.1
P4.2 | 1/4" = 1'-0"



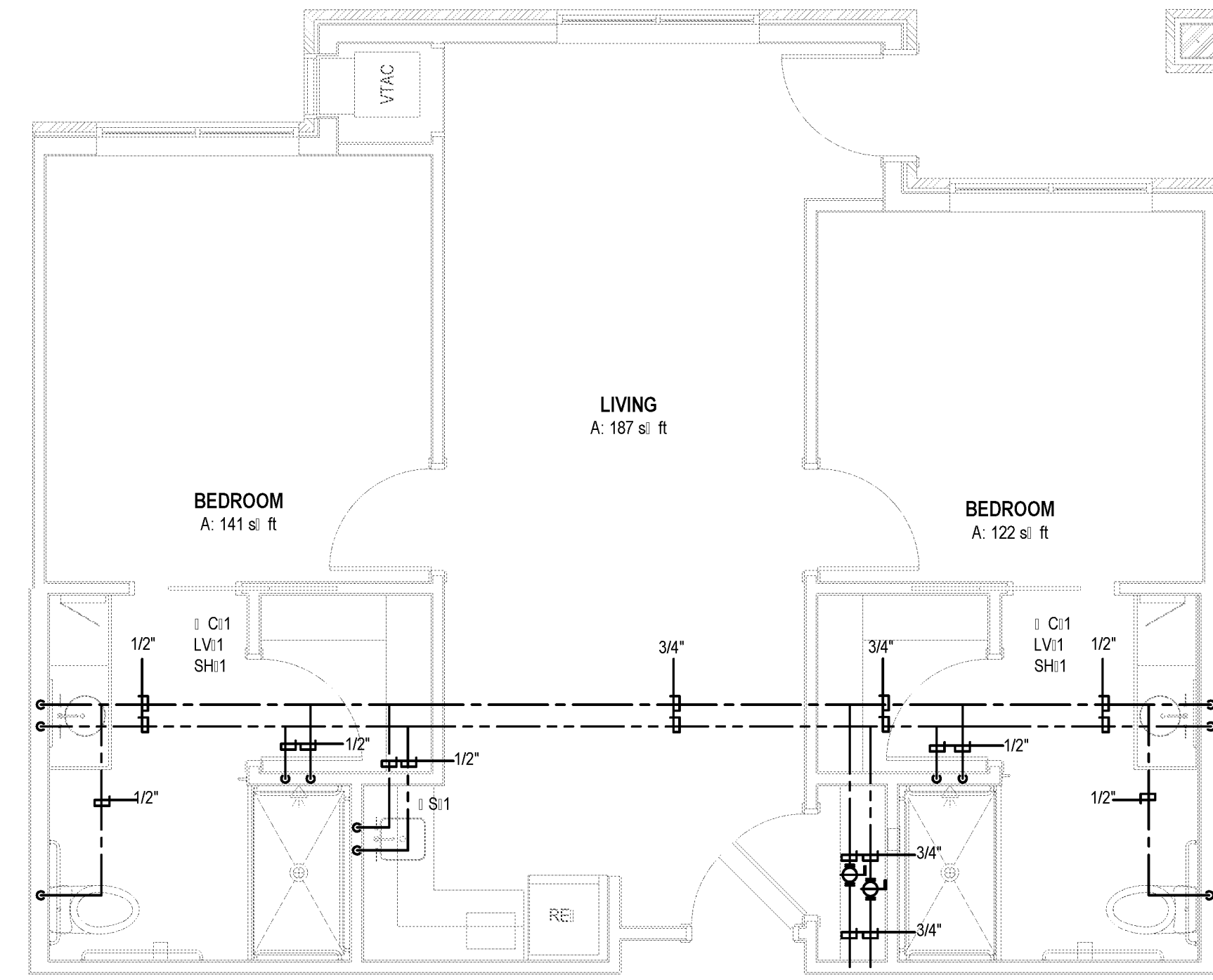
4 | TYPICAL MC UNIT B2.2
P4.2 | 1/4" = 1'-0"



5 | TYPICAL MC UNIT C1.1
P4.2 | 1/4" = 1'-0"



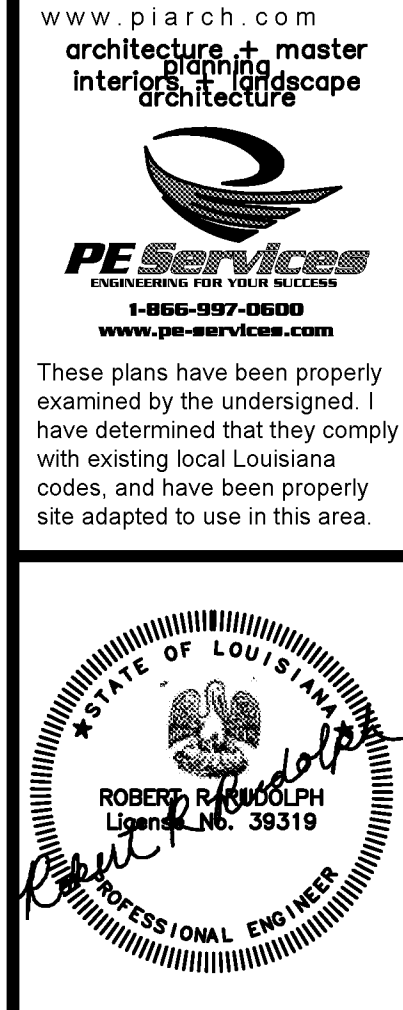
6 | TYPICAL MC UNIT C1.2
P4.2 | 1/4" = 1'-0"



7 | TYPICAL MC UNIT D1.1 & D1.2
P4.2 | 1/4" = 1'-0"

CONTRACTOR NOTE
IT IS THE RESPONSIBILITY OF THE CONTRACTOR TO NOTIFY THE ARCHITECT, LANDLORD AND TENANT OF ANY DISCREPANCIES ENCOUNTERED ON THE PLANS OR IN EXISTING SITE CONDITIONS PRIOR TO SUBMISSION OF BID.
BIDDERS ARE TO VISIT THE SITE AND FAMILIARIZE THEMSELVES WITH EXISTING CONDITIONS AND SATISFY THEMSELVES AS TO THE NATURE AND SCOPE OF THE WORK. THE BASE BID SHALL REFLECT MODIFICATIONS TO SYSTEMS AND DEVICES AS REQUIRED BY STATE, LOCAL AND FEDERAL CODES, WHETHER INDICATED OR NOT ON CONTRACT DOCUMENTS. THE SUBMISSION OF A BID WILL BE EVIDENCE THAT SUCH AN EXAMINATION AND COMPLIANCE WITH GOVERNING CODES/REGULATIONS HAS BEEN MADE. LATER CLAIMS FOR LABOR, EQUIPMENT, OR MATERIALS REQUIRED, OR FOR DELAY DUES TO ENCOUNTERED WHICH COULD HAVE BEEN FORESEEN HAD AN EXAMINATION AND CODES/REGULATIONS REVIEW BEEN MADE, WILL NOT BE ALLOWED.

pi architects
3500 Jefferson St. Suite 303
Austin, TX 78731
P: (512) 231-1910
F: (512) 231-1950
www.piarch.com
architecture + master
interior + landscape
architecture
PE Services
REGISTERED PROFESSIONAL ENGINEER
1-800-997-0900
www.pe-services.com
These plans have been properly
examined by the undersigned. I
have determined that they comply
with existing local Louisiana
codes, and have been properly
site adapted to use in this area.



WATERSTONE AT BATON ROUGE
ASSISTED LIVING & MEMORY CARE
SIEGEN LANE
BATON ROUGE, LA 70810

ISSUE: PERMIT SET
©2015 PI ARCHITECTS, INC.

REVISIONS:
DATE: 03/31/2016
PROJECT NUMBER: PES 15090
SHEET TITLE: TYPICAL UNIT PLANS

SHEET: P4.2