

BIM Server: Server2012 - BIM Server (18/01/1417 Concordia Baton Rouge) Ver: 18.0011 Wednesday, September 02, 2015 14:04 PM

- PLAN NOTES:**
1. HI AND CO FROM BELOW TO SERVE UNIT. REFER TO ENLARGED UNIT PLANS FOR LATER LAYOUT AND FITURE TAGS WITHIN UNITS.
  2. HI AND CO FROM BELOW TO SERVE FITURES:
  3. HI, HI, R, CO, AND GAS FROM BELOW. REFER TO LOWER FLOOR OR CONTINUATION.
  4. PROVIDE SHUT-OFF VALVE, BALANCING VALVE, AND CHECK VALVE ALONG WITH THE RECIRCULATING PUMP WITHIN THE MECHANICAL ROOM FOR EASY ACCESS.

**pi architects**  
 3500 Jefferson St. Suite 303  
 Austin, TX 78731  
 P: (512) 231-1910  
 F: (512) 231-1950  
 www.piarch.com  
 architecture + master  
 interior + landscape  
 architecture  
**PE Services**  
 PROFESSIONAL ENGINEERING ARCHITECTS  
 1-800-997-0900  
 www.pe-services.com  
 These plans have been properly  
 examined by the undersigned. I  
 have determined that they comply  
 with existing local Louisiana  
 codes, and have been properly  
 site adapted to use in this area.

STATE OF LOUISIANA  
 ROBERT M. GOSWAMI  
 License No. 39319  
 PROFESSIONAL ENGINEER

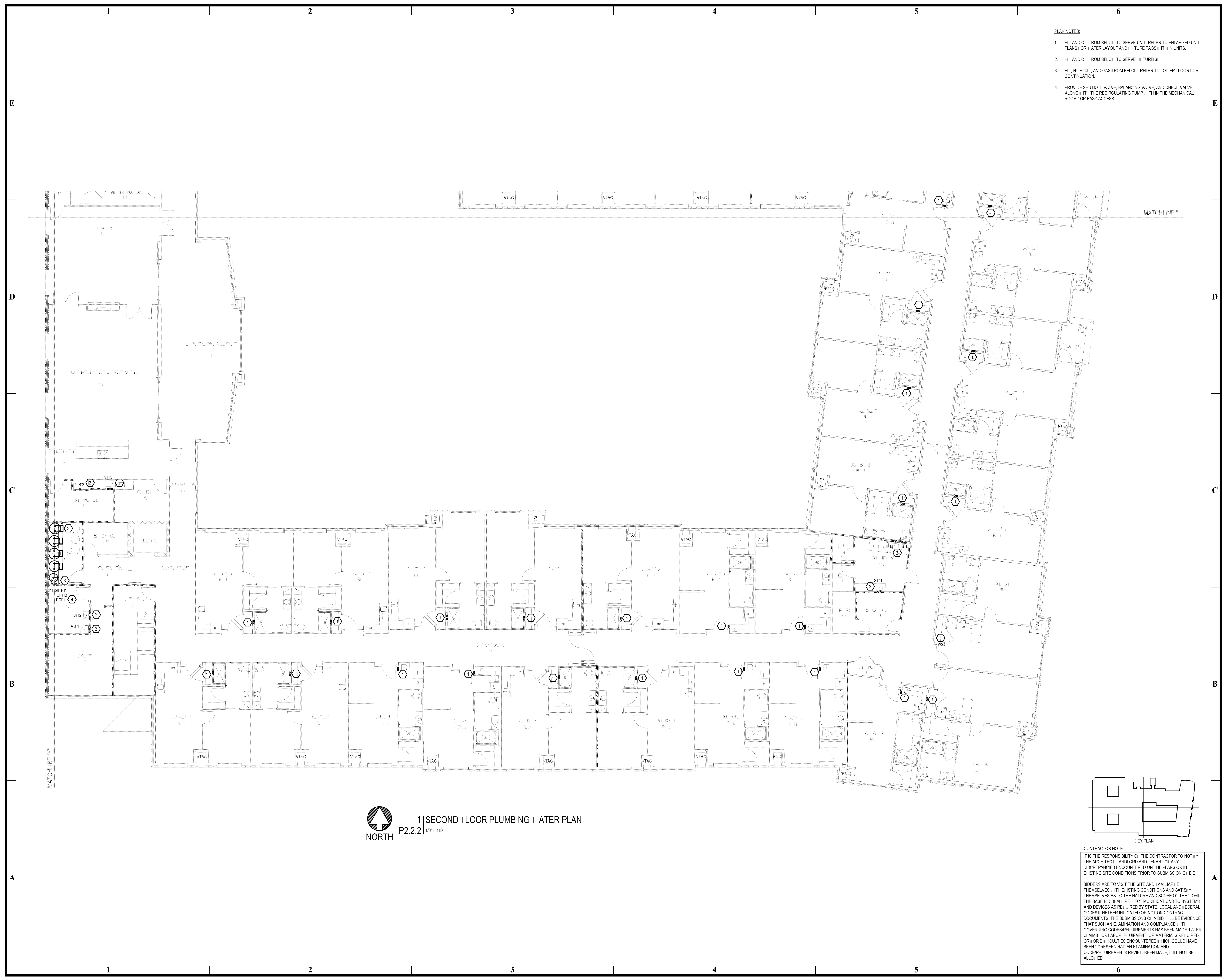
**WATERSTONE AT BATON ROUGE  
 ASSISTED LIVING & MEMORY CARE**  
 SIEGEN LANE  
 BATON ROUGE, LA 70810

ISSUE: PERMIT SET

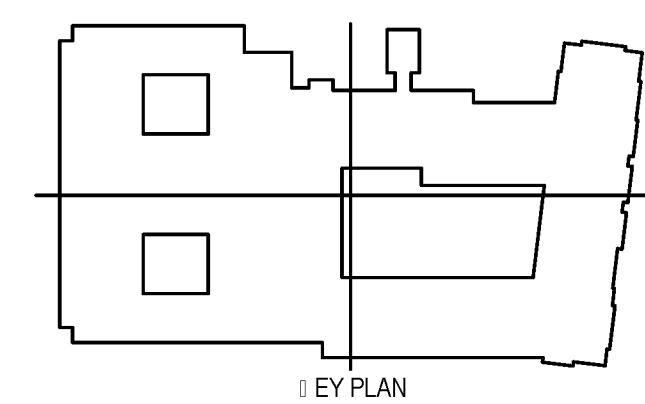
©2015 PI ARCHITECTS, INC.

REVISIONS:

DATE: 03/31/2016  
 PROJECT NUMBER: PES 15090  
 SHEET TITLE: SECOND FLOOR PLUMBING LATER PLAN  
 SHEET: P2.2.2



**1 SECOND FLOOR PLUMBING LATER PLAN**  
 P2.2.2 1/8" = 1'-0"



**CONTRACTOR NOTE**

IT IS THE RESPONSIBILITY OF THE CONTRACTOR TO NOTIFY THE ARCHITECT, LANDLORD AND TENANT OF ANY DISCREPANCIES ENCOUNTERED ON THE PLANS OR IN EXISTING SITE CONDITIONS PRIOR TO SUBMISSION OF BID.

BIDDERS ARE TO VISIT THE SITE AND FAMILIARIZE THEMSELVES WITH EXISTING CONDITIONS AND SATISFY THEMSELVES AS TO THE NATURE AND SCOPE OF THE WORK. THE BASE BID SHALL REFLECT MODIFICATIONS TO SYSTEMS AND DEVICES AS REQUIRED BY STATE, LOCAL AND FEDERAL CODES. WHETHER INDICATED OR NOT ON CONTRACT DOCUMENTS. THE SUBMISSION OF A BID WILL BE EVIDENCE THAT SUCH AN EXAMINATION AND COMPLIANCE WITH GOVERNING CODES/REGULATIONS HAS BEEN MADE. LATER CLAIMS FOR LABOR, EQUIPMENT, OR MATERIALS REQUIRED, OR UNEXPECTED DIFFICULTIES ENCOUNTERED WHICH COULD HAVE BEEN FORESEEN HAD AN EXAMINATION AND CODES/REGULATIONS REVIEW BEEN MADE, WILL NOT BE ALLOWED.