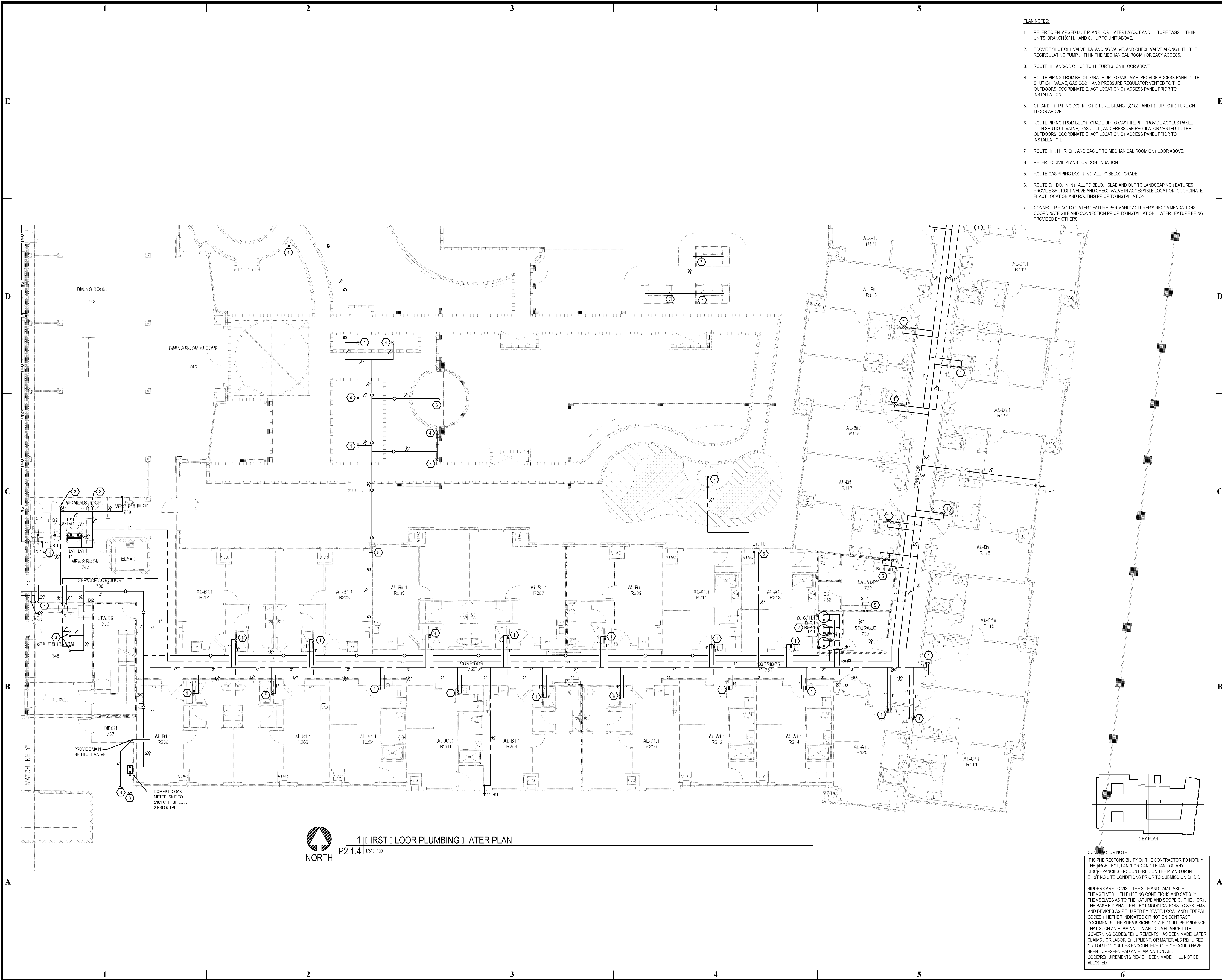


BIM Server: Save/2012 - BIM Server (18/01/14) Concordia Baton Rouge | Ver: 18.0011 | Wednesday, September 02, 2015 | 4:04 PM



1 | FIRST FLOOR PLUMBING | LATER PLAN  
P2.1.4 | 1/8" = 1'-0"

- PLAN NOTES:**
1. REFER TO ENLARGED UNIT PLANS | OR | LATER LAYOUT AND | | TURE TAGS | | WITHIN UNITS. BRANCH | | H | AND C | | UP TO UNIT ABOVE.
  2. PROVIDE SHUT-OFF VALVE, BALANCING VALVE, AND CHECK VALVE ALONG | | WITH THE RECIRCULATING PUMP | | WITHIN THE MECHANICAL ROOM | | OR EASY ACCESS.
  3. ROUTE | | H | AND/OR C | | UP TO | | TURE(S) | | ON | | LOOR ABOVE.
  4. ROUTE PIPING | | FROM BELOW | | GRADE UP TO GAS LAMP. PROVIDE ACCESS PANEL | | WITH SHUT-OFF VALVE, GAS COCK, AND PRESSURE REGULATOR VENTED TO THE OUTDOORS. COORDINATE | | ACT LOCATION | | ACCESS PANEL PRIOR TO INSTALLATION.
  5. C | | AND | | H | PIPING DOWN TO | | TURE. BRANCH | | C | | AND | | H | UP TO | | TURE ON | | LOOR ABOVE.
  6. ROUTE PIPING | | FROM BELOW | | GRADE UP TO GAS | | REPT. PROVIDE ACCESS PANEL | | WITH SHUT-OFF VALVE, GAS COCK, AND PRESSURE REGULATOR VENTED TO THE OUTDOORS. COORDINATE | | ACT LOCATION | | ACCESS PANEL PRIOR TO INSTALLATION.
  7. ROUTE | | H |, | | R |, C | |, AND GAS UP TO MECHANICAL ROOM ON | | LOOR ABOVE.
  8. REFER TO CIVIL PLANS | | OR CONTINUATION.
  9. ROUTE GAS PIPING DOWN | | IN | | ALL TO BELOW | | GRADE.
  10. ROUTE C | | DOWN | | IN | | ALL TO BELOW | | SLAB AND OUT TO LANDSCAPING | | FEATURES. PROVIDE SHUT-OFF VALVE AND CHECK VALVE IN ACCESSIBLE LOCATION. COORDINATE | | ACT LOCATION AND ROUTING PRIOR TO INSTALLATION.
  11. CONNECT PIPING TO | | LATER | | FEATURE PER MANUFACTURER'S RECOMMENDATIONS. COORDINATE | | S | | E AND CONNECTION PRIOR TO INSTALLATION. | | LATER | | FEATURE BEING PROVIDED BY OTHERS.

**CONTRACTOR NOTE**

IT IS THE RESPONSIBILITY OF THE CONTRACTOR TO NOTIFY THE ARCHITECT, LANDLORD AND TENANT OF ANY DISCREPANCIES ENCOUNTERED ON THE PLANS OR IN EXISTING SITE CONDITIONS PRIOR TO SUBMISSION OF BID.

BIDDERS ARE TO VISIT THE SITE AND FAMILIARIZE THEMSELVES WITH EXISTING CONDITIONS AND SATISFY THEMSELVES AS TO THE NATURE AND SCOPE OF THE WORK. THE BASE BID SHALL REFLECT MODIFICATIONS TO SYSTEMS AND DEVICES AS REQUIRED BY STATE, LOCAL AND FEDERAL CODES, WHETHER INDICATED OR NOT ON CONTRACT DOCUMENTS. THE SUBMISSION OF A BID SHALL BE EVIDENCE THAT SUCH AN EXAMINATION AND COMPLIANCE WITH GOVERNING CODES/REGULATIONS HAS BEEN MADE. LATER CLAIMS OR LABOR EQUIPMENT OR MATERIALS REQUIRED, OR OTHER CONDITIONS ENCOUNTERED WHICH COULD HAVE BEEN FORESEEN HAD AN EXAMINATION AND CODES/REGULATIONS REVIEW BEEN MADE, SHALL NOT BE ALLOWED.

**pi architects**  
3500 Jefferson St. Suite 303  
Austin, TX 78731  
P: (512) 231-1910  
F: (512) 231-1950  
www.piarch.com  
architects + interior designers + landscape architects  
PE Services  
PROFESSIONAL ENGINEERS FOR THE STATE OF TEXAS  
www.pe-services.com  
These plans have been properly examined by the undersigned. I have determined that they comply with existing local Louisiana codes, and have been properly adapted to use in this area.

STATE OF LOUISIANA  
ROBERT M. HODGSON  
LICENSE NO. 30319  
PROFESSIONAL ENGINEER

**WATERSTONE AT BATON ROUGE  
ASSISTED LIVING & MEMORY CARE**  
SIEGEN LANE  
BATON ROUGE, LA 70810

ISSUE: PERMIT SET

©2015 PI ARCHITECTS, INC.

REVISIONS:

DATE: 03/31/2016  
PROJECT NUMBER: PES 15090  
SHEET TITLE: FIRST FLOOR PLUMBING | LATER PLAN  
SHEET: P2.1.4