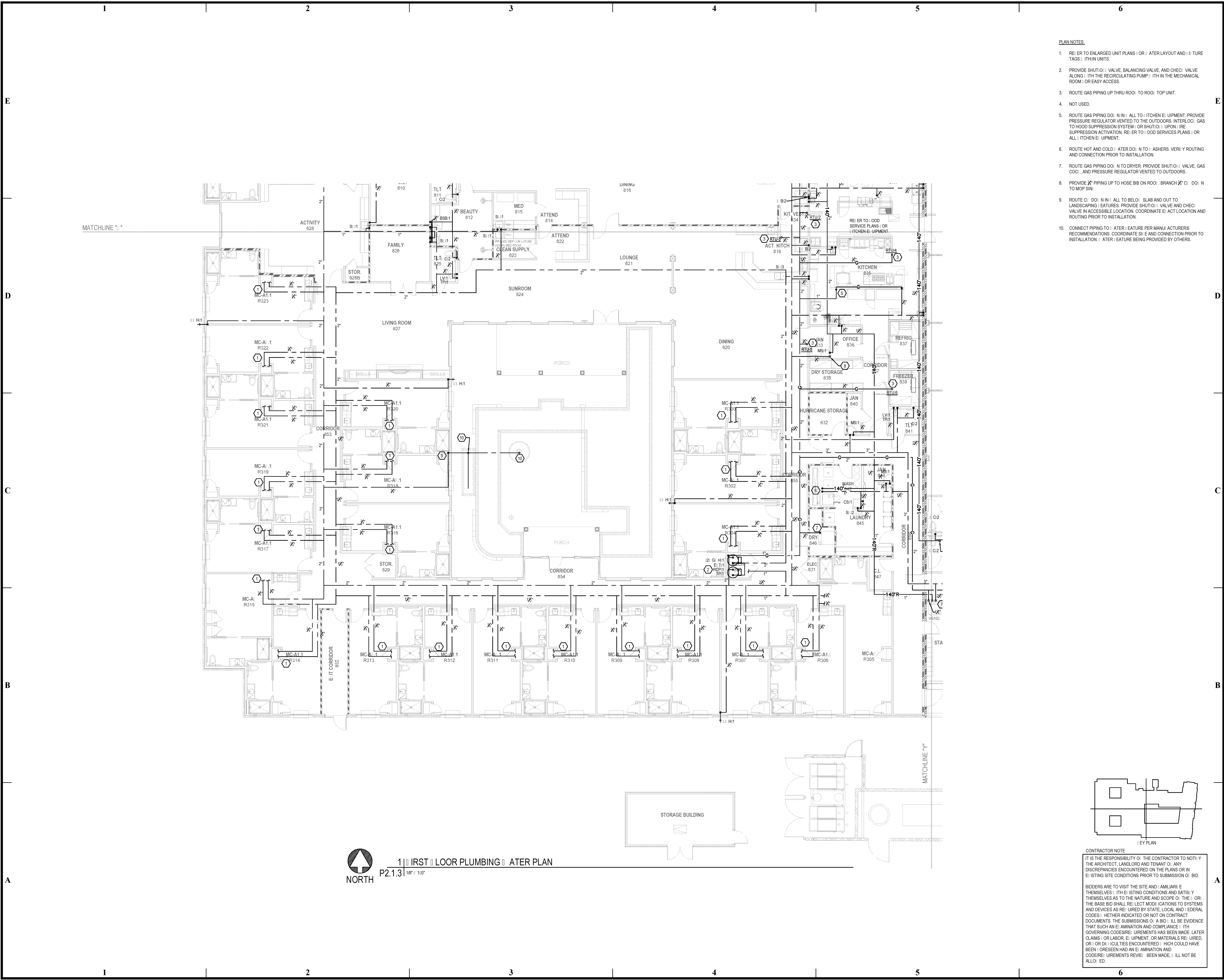
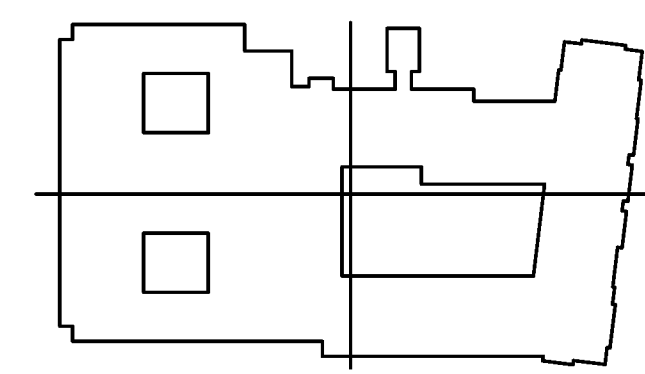


BIM Server: Server2012 - BIM Server (18/07/14017 Concordia Baton Rouge) [Ver: 18.001] Wednesday, September 02, 2015 1:04 PM



1 | FIRST FLOOR PLUMBING WATER PLAN
P2.1.3 | 1/8" = 1'-0"

- PLAN NOTES:**
1. REFER TO ENLARGED UNIT PLANS FOR WATER LAYOUT AND INSTRUMENT TAGS WITHIN UNITS.
 2. PROVIDE SHUT-OFF VALVE, BALANCING VALVE, AND CHECK VALVE ALONG WITH THE RECIRCULATING PUMP WITHIN THE MECHANICAL ROOM OR EASY ACCESS.
 3. ROUTE GAS PIPING UP THRU ROOF TO ROOF TOP UNIT.
 4. NOT USED.
 5. ROUTE GAS PIPING DOWN TO KITCHEN EQUIPMENT. PROVIDE PRESSURE REGULATOR VENTED TO THE OUTDOORS. INTERLOC GAS TO HOOD SUPPRESSION SYSTEM OR SHUT-OFF UPON FIRE SUPPRESSION ACTIVATION. REFER TO FOOD SERVICES PLANS FOR ALL KITCHEN EQUIPMENT.
 6. ROUTE HOT AND COLD WATER DOWN TO DISHES. VERIFY ROUTING AND CONNECTION PRIOR TO INSTALLATION.
 7. ROUTE GAS PIPING DOWN TO DRYER. PROVIDE SHUT-OFF VALVE, GAS COC, AND PRESSURE REGULATOR VENTED TO OUTDOORS.
 8. PROVIDE PIPING UP TO HOSE BIB ON ROOF. BRANCH TO DOWN TO MOP SIN.
 9. ROUTE COLD WATER DOWN TO LANDSCAPING FEATURES. PROVIDE SHUT-OFF VALVE AND CHECK VALVE IN ACCESSIBLE LOCATION. COORDINATE EQUIPMENT LOCATION AND ROUTING PRIOR TO INSTALLATION.
 10. CONNECT PIPING TO WATER FEATURE PER MANUFACTURER'S RECOMMENDATIONS. COORDINATE SIZE AND CONNECTION PRIOR TO INSTALLATION. WATER FEATURE BEING PROVIDED BY OTHERS.



CONTRACTOR NOTE

IT IS THE RESPONSIBILITY OF THE CONTRACTOR TO NOTIFY THE ARCHITECT, LANDLORD AND TENANT OF ANY DISCREPANCIES ENCOUNTERED ON THE PLANS OR IN EXISTING SITE CONDITIONS PRIOR TO SUBMISSION OF BID.

BIDDERS ARE TO VISIT THE SITE AND FAMILIARIZE THEMSELVES WITH EXISTING CONDITIONS AND SATISFY THEMSELVES AS TO THE NATURE AND SCOPE OF THE WORK. THE BASE BID SHALL REFLECT MODIFICATIONS TO SYSTEMS AND DEVICES AS REQUIRED BY STATE, LOCAL AND FEDERAL CODES. WHETHER INDICATED OR NOT ON CONTRACT DOCUMENTS. THE SUBMISSIONS OF A BID WILL BE EVIDENCE THAT SUCH AN EXAMINATION AND COMPLIANCE WITH GOVERNING CODES/REGULATIONS HAS BEEN MADE. LATER CLAIMS OR LABOR EQUIPMENT OR MATERIALS REQUIRED, OR OTHER LIABILITIES ENCOUNTERED WHICH COULD HAVE BEEN FORESEEN HAD AN EXAMINATION AND CODE/REGULATIONS REVIEW BEEN MADE, WILL NOT BE ALLOWED.

pi architects
3500 Jefferson St. Suite 303
Austin, TX 78731
P: (512) 231-1910
F: (512) 231-1950
www.piarch.com

architecture + master interior landscape architecture
PE Services
REGISTERED PROFESSIONAL ENGINEER
LICENSE NO. 36319
www.pe-services.com

These plans have been properly examined by the undersigned. I have determined that they comply with existing local Louisiana codes, and have been properly site adapted to use in this area.

ROBERT M. MCGEE
Professional Engineer
License No. 36319

WATERSTONE AT BATON ROUGE ASSISTED LIVING & MEMORY CARE
SIEGEN LANE
BATON ROUGE, LA 70810

ISSUE: PERMIT SET

©2015 PI ARCHITECTS, INC.
REVISIONS:

DATE: 03/31/2016
PROJECT NUMBER: PES 15090
SHEET TITLE: FIRST FLOOR PLUMBING WATER PLAN

SHEET: P2.1.3