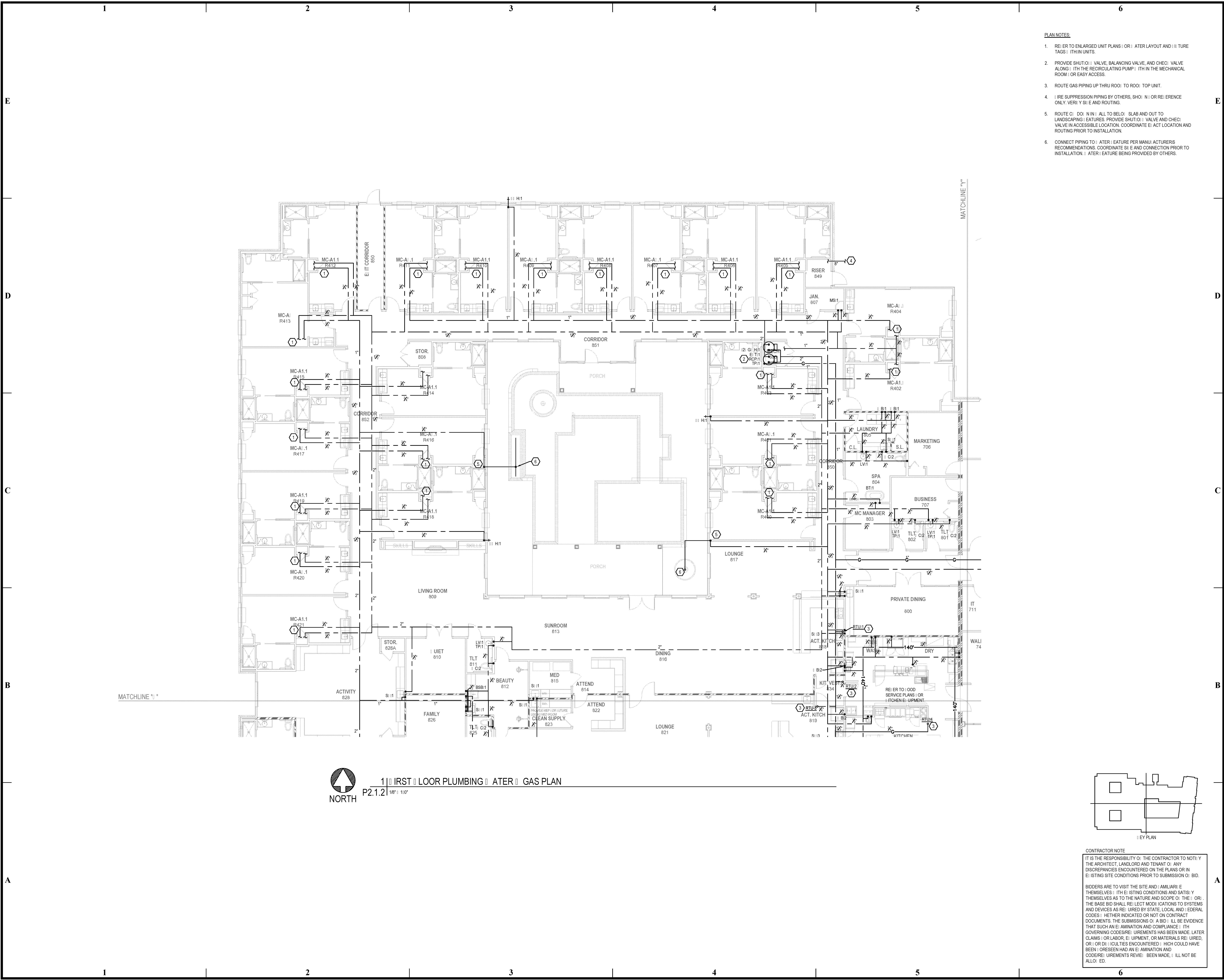
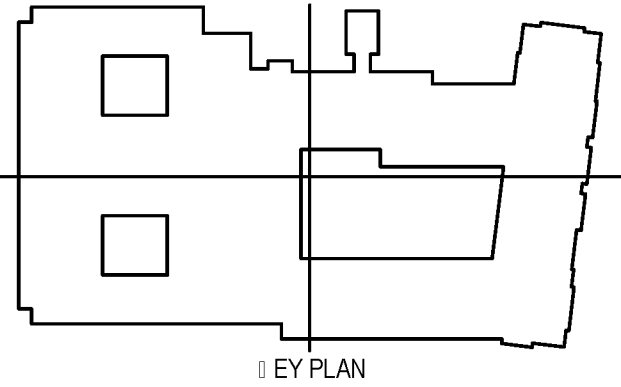


BIM Server: Server2012 - BIM Server (18/01/14)17 Concordia Baton Rouge | Ver: 18.001 | Wednesday, September 02, 2015 | 4:04 PM



1 | FIRST FLOOR PLUMBING & GAS PLAN
P2.1.2 | 1/8" = 1'-0"



CONTRACTOR NOTE
IT IS THE RESPONSIBILITY OF THE CONTRACTOR TO NOTIFY THE ARCHITECT, LANDLORD AND TENANT OF ANY DISCREPANCIES ENCOUNTERED ON THE PLANS OR IN EXISTING SITE CONDITIONS PRIOR TO SUBMISSION OF BID.
BIDDERS ARE TO VISIT THE SITE AND FAMILIARIZE THEMSELVES WITH THE EXISTING CONDITIONS AND SATISFY THEMSELVES AS TO THE NATURE AND SCOPE OF THE WORK. THE BASE BID SHALL REFLECT MODIFICATIONS TO SYSTEMS AND DEVICES AS REQUIRED BY STATE, LOCAL AND FEDERAL CODES. WHETHER INDICATED OR NOT ON CONTRACT DOCUMENTS, THE SUBMISSION OF A BID WILL BE EVIDENCE THAT SUCH AN EXAMINATION AND COMPLIANCE WITH GOVERNING CODES/REGULATIONS HAS BEEN MADE. LATER CLAIMS OF LABOR, EQUIPMENT, OR MATERIALS REQUIRED, OR UNEXPECTED CONDITIONS WHICH COULD HAVE BEEN FORESEEN HAD AN EXAMINATION AND CODES/REGULATIONS REVIEW BEEN MADE, WILL NOT BE ALLOWED.

- PLAN NOTES:**
- REFER TO ENLARGED UNIT PLANS FOR RATER LAYOUT AND FITURE TAGS WITHIN UNITS.
 - PROVIDE SHUTOFF VALVE, BALANCING VALVE, AND CHECK VALVE ALONG WITH THE RECIRCULATING PUMP WITHIN THE MECHANICAL ROOM OR EASY ACCESS.
 - ROUTE GAS PIPING UP THRU ROOF TO ROOF TOP UNIT.
 - IF FIRE SUPPRESSION PIPING BY OTHERS, SHOW OR REFERENCE ONLY. VERIFY SIZE AND ROUTING.
 - ROUTE DOWN TO BELOW SLAB AND OUT TO LANDSCAPING FEATURES. PROVIDE SHUTOFF VALVE AND CHECK VALVE IN ACCESSIBLE LOCATION. COORDINATE EXISTING LOCATION AND ROUTING PRIOR TO INSTALLATION.
 - CONNECT PIPING TO EXISTING FEATURE PER MANUFACTURER'S RECOMMENDATIONS. COORDINATE SIZE AND CONNECTION PRIOR TO INSTALLATION. EXISTING FEATURE BEING PROVIDED BY OTHERS.

pi architects
3500 Jefferson St. Suite 303
Austin, TX 78731
P: (512) 231-1910
F: (512) 231-1950
www.piarch.com
architecture + master
interior + landscape
architecture
PE Services
PROFESSIONAL ENGINEERING
www.pe-services.com
These plans have been properly
examined by the undersigned. I
have determined that they comply
with existing local Louisiana
codes, and have been properly
site adapted to use in this area.

STATE OF LOUISIANA
ROBERT M. MCKENNA
LICENSE NO. 39319
PROFESSIONAL ENGINEER

**WATERSTONE AT BATON ROUGE
ASSISTED LIVING & MEMORY CARE**
SIEGEN LANE
BATON ROUGE, LA 70810

ISSUE: PERMIT SET

©2015 PI ARCHITECTS, INC.

REVISIONS:

DATE: 03/31/2016
PROJECT NUMBER: PES 15090
SHEET TITLE: FIRST FLOOR PLUMBING & GAS PLAN
SHEET: P2.1.2