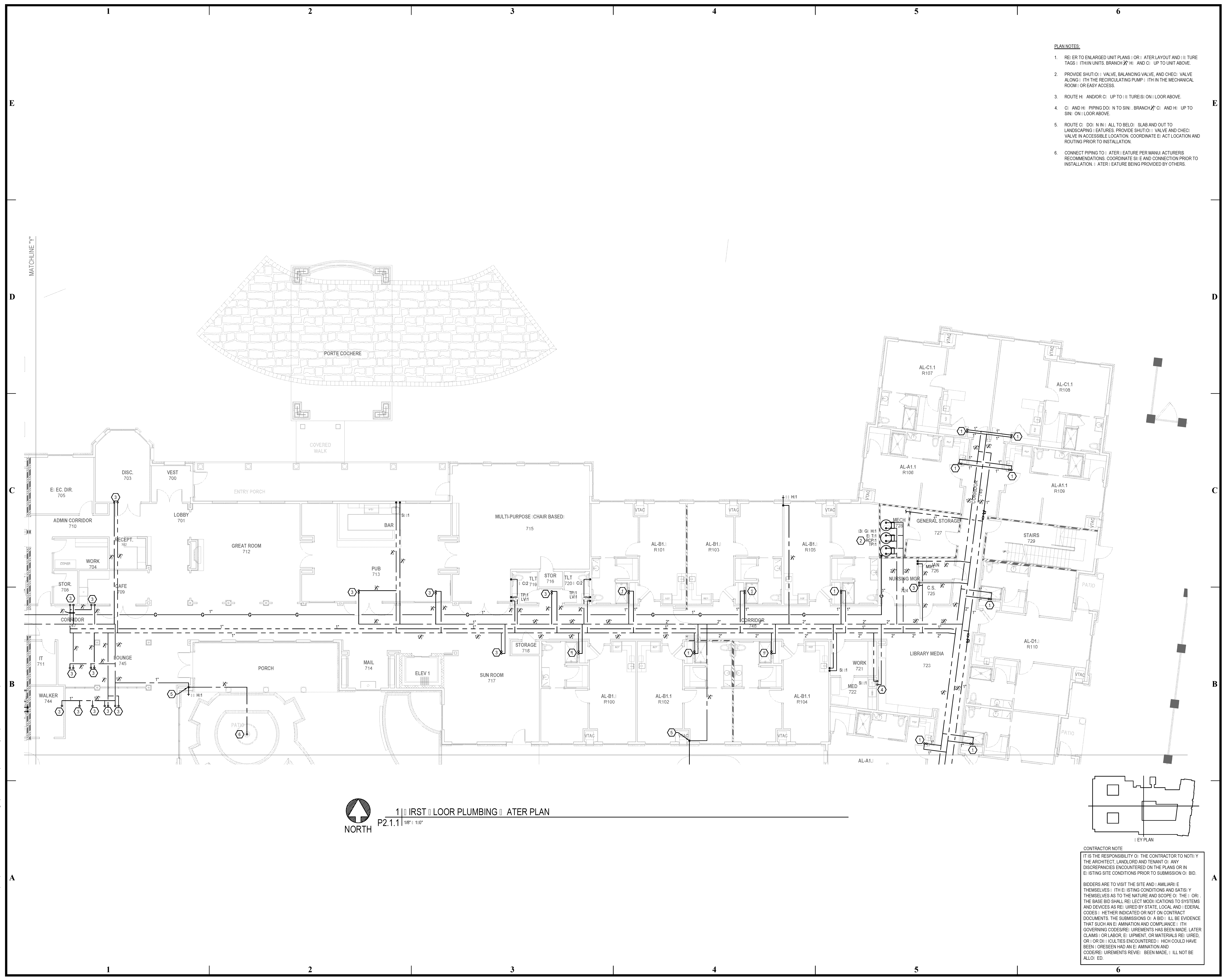


3500 Jefferson St. Suite 303
Austin, TX 78731
P: (512) 231-1910
F: (512) 231-1950

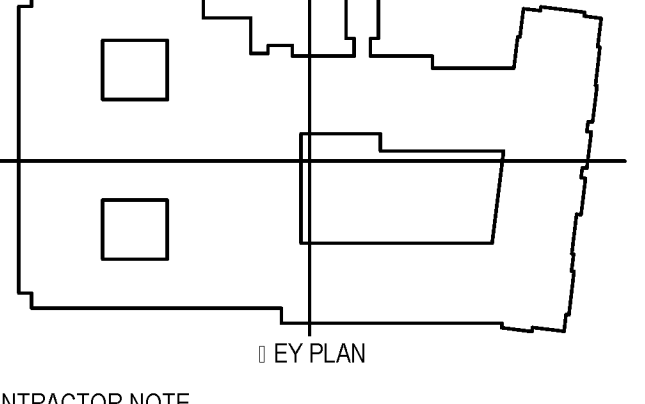


These plans have been properly examined by the undersigned. I have determined that they comply with existing local Louisiana codes, and have been properly site adapted to use in this area.

- PLAN NOTES:**
- REFER TO ENLARGED UNIT PLANS FOR LATER LAYOUT AND IDENTIFY TAGS WITHIN UNITS, BRANCH, H, AND C, UP TO UNIT ABOVE.
 - PROVIDE SHUTOFF VALVE, BALANCING VALVE, AND CHECK VALVE ALONG WITH THE RECIRCULATING PUMP WITHIN THE MECHANICAL ROOM OR EASY ACCESS.
 - ROUTE H, AND/OR C, UP TO IDENTIFY TURES ON FLOOR ABOVE.
 - C, AND H, PIPING DOWN TO SINK, BRANCH, C, AND H, UP TO SINK ON FLOOR ABOVE.
 - ROUTE C, DOWN IN ALL TO BELOW SLAB AND OUT TO LANDSCAPING FEATURES. PROVIDE SHUTOFF VALVE AND CHECK VALVE IN ACCESSIBLE LOCATION, COORDINATE ELECTRICAL LOCATION AND ROUTING PRIOR TO INSTALLATION.
 - CONNECT PIPING TO LATER FEATURE PER MANUFACTURER'S RECOMMENDATIONS. COORDINATE SIZE AND CONNECTION PRIOR TO INSTALLATION. LATER FEATURE BEING PROVIDED BY OTHERS.



1 | FIRST FLOOR PLUMBING | LATER PLAN
P2.1.1 | 1/8" = 1'-0"



CONTRACTOR NOTE

IT IS THE RESPONSIBILITY OF THE CONTRACTOR TO NOTIFY THE ARCHITECT, LANDLORD AND TENANT OF ANY DISCREPANCIES ENCOUNTERED ON THE PLANS OR IN EXISTING SITE CONDITIONS PRIOR TO SUBMISSION OF BID.

BIDDERS ARE TO VISIT THE SITE AND FAMILIARIZE THEMSELVES WITH EXISTING CONDITIONS AND SATISFY THEMSELVES AS TO THE NATURE AND SCOPE OF THE WORK. THE BASE BID SHALL REFLECT MODIFICATIONS TO SYSTEMS AND DEVICES AS REQUIRED BY STATE, LOCAL AND FEDERAL CODES. WHETHER INDICATED OR NOT ON CONTRACT DOCUMENTS. THE SUBMISSION OF A BID SHALL BE EVIDENCE THAT SUCH AN EXAMINATION AND COMPLIANCE WITH GOVERNING CODES/REGULATIONS HAS BEEN MADE. LATER CLAIMS FOR LABOR, EQUIPMENT, OR MATERIALS REQUIRED, OR UNEXPECTED CONDITIONS WHICH COULD HAVE BEEN FORESEEN HAD AN EXAMINATION AND CODES/REGULATIONS REVIEW BEEN MADE, WILL NOT BE ALLOWED.

**WATERSTONE AT BATON ROUGE
ASSISTED LIVING & MEMORY CARE**

ISSUE: PERMIT SET

©2015 PI ARCHITECTS, INC.
REVISIONS:

DATE: 03/31/2016
PROJECT NUMBER: PES 15090
SHEET TITLE: FIRST FLOOR PLUMBING LATER PLAN

SHEET: P2.1.1

BIM Server: Server2012 - BIM Server (18 0) / 14017 Concordia Baton Rouge | Ver: 18.001 | Wednesday, September 02, 2015 | 4:04 PM