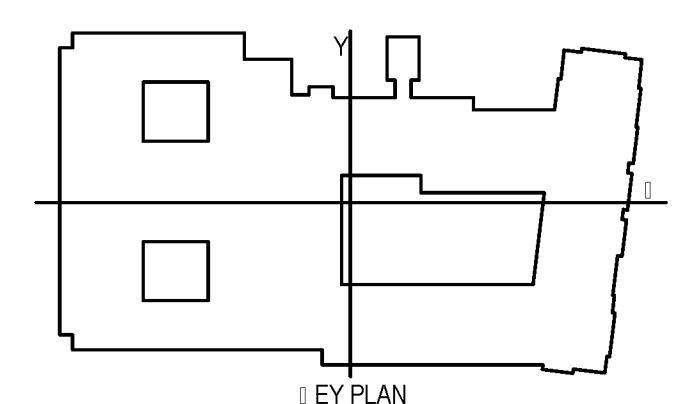
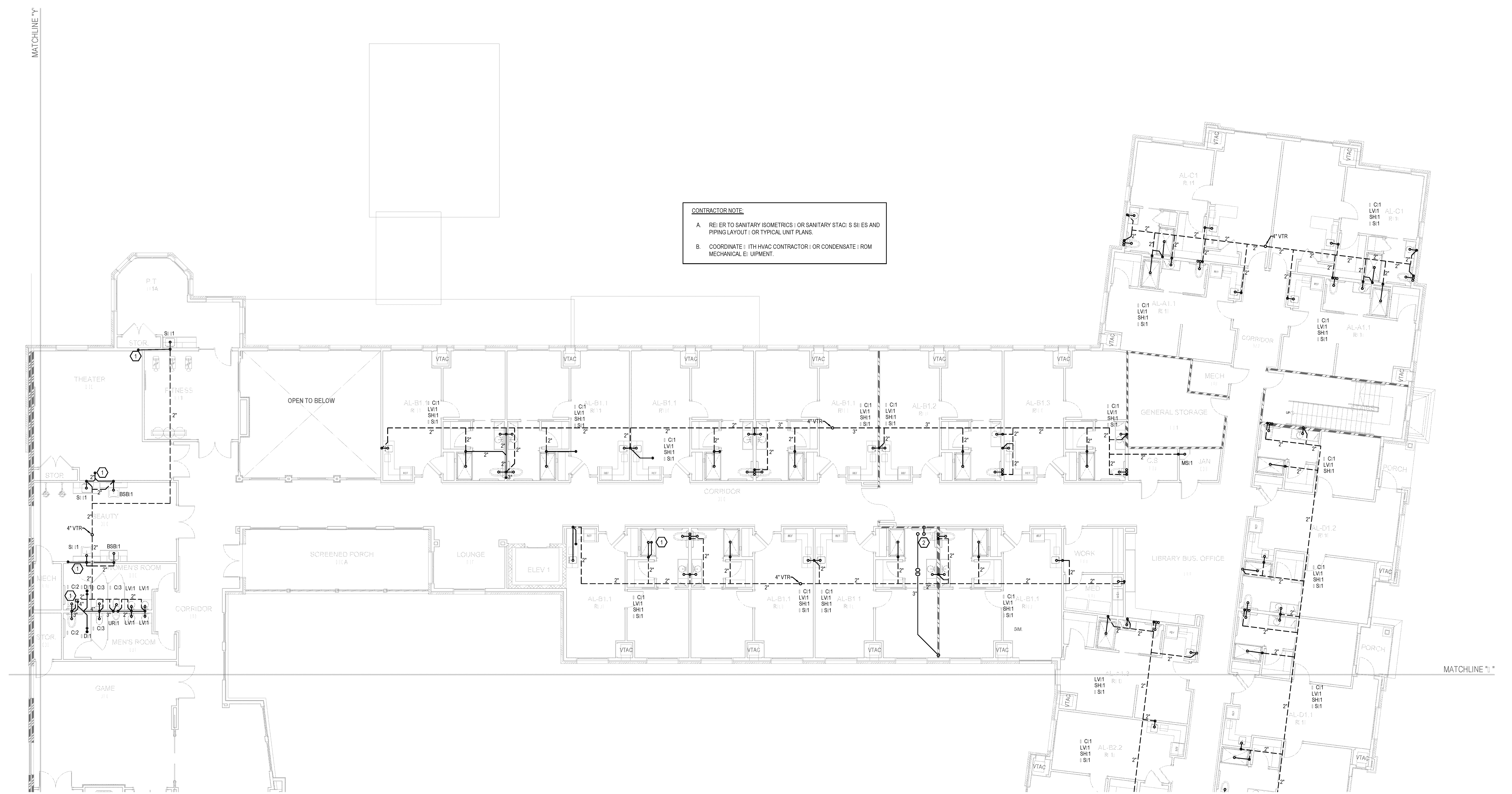


**PLAN NOTES:**

1.  $\bigcirc$  SET SANITARY PIPING IN CEILING SPACE OR 1 FLOOR BELOW.
2. STORM AND OVER FLOI DRAINS FROM ROOF. ROUTE STORM DOWN TO BELOW SLAB AND OVER FLOOR AS HIGH AS POSSIBLE ABOVE CEILING TO DRAIN OUTSIDE.

**CONTRACTOR NOTE:**

- REFER TO SANITARY ISOMETRICS OR SANITARY STACK SCHEDULES AND PIPING LAYOUT OR TYPICAL UNIT PLANS.
- COORDINATE WITH HVAC CONTRACTOR OR CONDENSATE FROM MECHANICAL EQUIPMENT.



**1 | SECOND FLOOR PLUMBING | ASTE AND VENTPLAN**  
**P1.2.1** 1/8" = 1'-0"

**CONTRACTOR NOTE:**

IT IS THE RESPONSIBILITY OF THE CONTRACTOR TO NOTIFY THE ARCHITECT, LANDLORD AND TENANT OF ANY DISCREPANCIES ENCOUNTERED ON THE PLANS OR IN EXISTING SITE CONDITIONS PRIOR TO SUBMISSION OF BID.

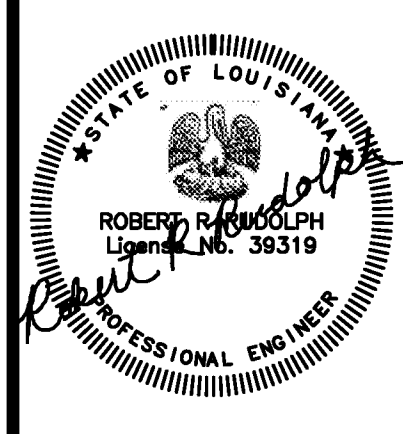
BIDDERS ARE TO VISIT THE SITE AND FAMILIARIZE THEMSELVES WITH EXISTING CONDITIONS AND SATISFY THEMSELVES AS TO THE NATURE AND SCOPE OF THE WORK. THE BASE BID SHALL REFLECT MODIFICATIONS TO SYSTEMS AND DEVICES AS REQUIRED BY STATE, LOCAL AND FEDERAL CODES. WHETHER INDICATED OR NOT ON CONTRACT DOCUMENTS. THE SUBMISSION OF A BID SHALL BE EVIDENCE THAT SUCH AN EXAMINATION AND COMPLIANCE WITH GOVERNING CODES/REGULATIONS HAS BEEN MADE. LATER CLAIMS OF LABOR, EQUIPMENT, OR MATERIALS REQUIRED, OR UNFORESEEN DIFFICULTIES ENCOUNTERED WHICH COULD HAVE BEEN FORESEEN HAD AN EXAMINATION AND CODES/REGULATIONS REVIEW BEEN MADE, SHALL NOT BE ALLOWED.

**pi architects**  
 3500 Jefferson St. Suite 303  
 Austin, TX 78731  
 P: (512) 231-1910  
 F: (512) 231-1950

www.piarch.com  
**architecture + master**  
 interior + landscape  
 architecture

**PE Services**  
 PROFESSIONAL ENGINEERS FOR ARCHITECTS  
 1-800-397-0900  
 www.pe-services.com

These plans have been properly examined by the undersigned. I have determined that they comply with existing local Louisiana codes, and have been properly site adapted to use in this area.



**WATERSTONE AT BATON ROUGE  
 ASSISTED LIVING & MEMORY CARE**  
 SIEGEN LANE  
 BATON ROUGE, LA 70810

ISSUE: PERMIT SET

©2015 PI ARCHITECTS, INC.  
 REVISIONS:

DATE: 03/31/2016  
 PROJECT NUMBER: PES 15090  
 SHEET TITLE:  
**SECOND FLOOR  
 PLUMBING | ASTE  
 AND VENTPLAN**

SHEET:  
**P1.2.1**

BIM Server: Server\2012 - BIM Server\18 01\14017 Concordia Baton Rouge\18 001\Wednesday, September 02, 2015 4:04 PM