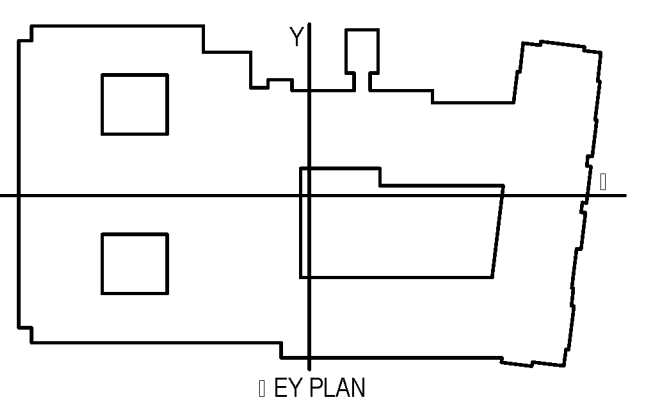
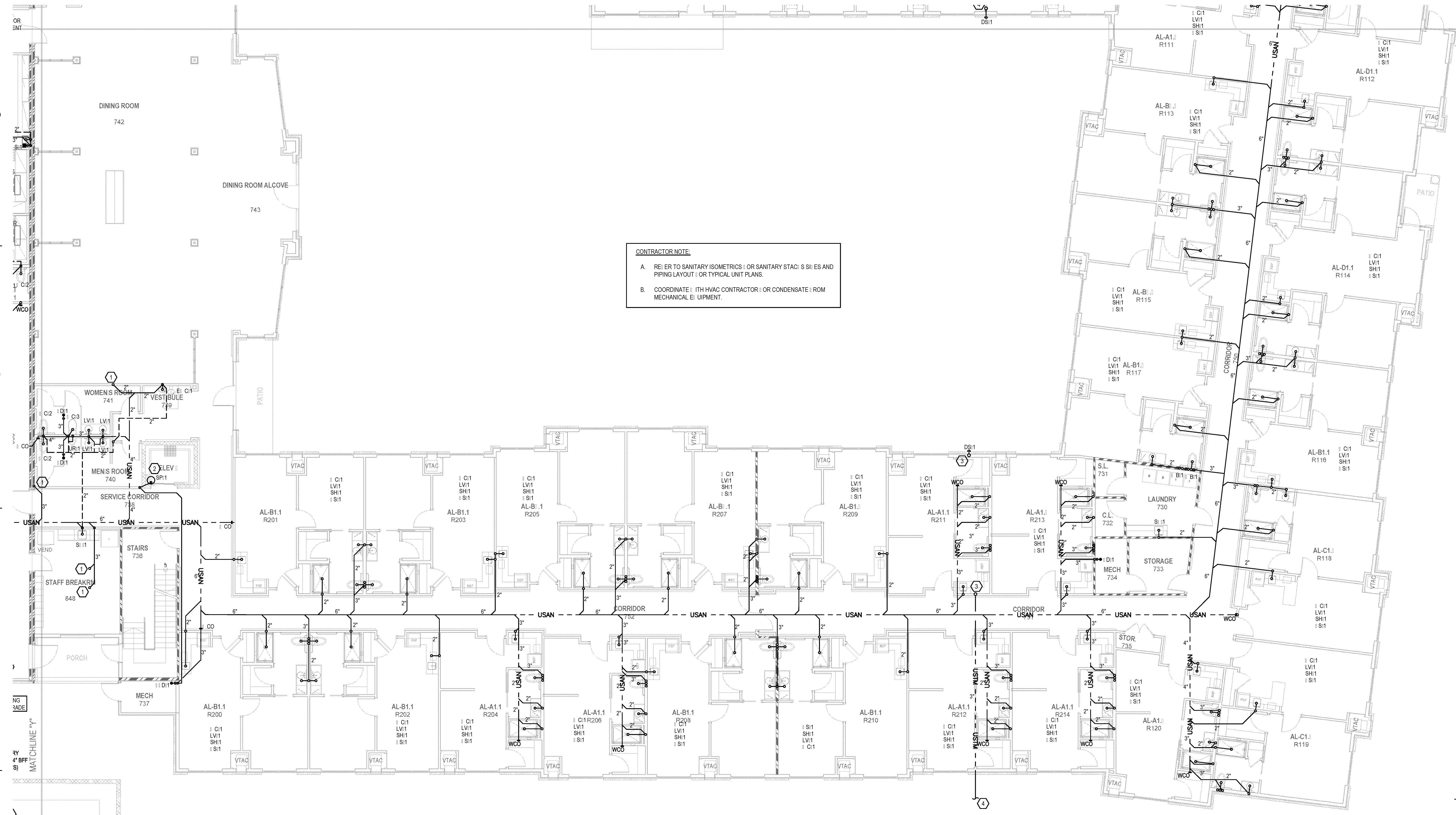


PLAN NOTES:

- SANITARY RISER (R) FROM FLOOR ABOVE. REFER TO UPPER FLOOR FOR CONTINUATION.
- PROVIDE SUMP PUMP WITH OIL ALARM SYSTEM PER IPC SECTION 1003.4. ROUTE SUMP DRAIN UP IN ALL TO ABOVE CEILING AND OVER TO UNNEL DRAIN.
- STORM AND OVERFLOW DRAINS FROM ABOVE. ROUTE STORM DRAIN TO BELOW SLAB AND OVER FLOOR TO DRAIN POUT.
- REFER TO CIVIL PLANS FOR CONTINUATION.

CONTRACTOR NOTE:
 A. REFER TO SANITARY ISOMETRICS FOR SANITARY STACK SIZES AND PIPING LAYOUT OR TYPICAL UNIT PLANS.
 B. COORDINATE WITH HVAC CONTRACTOR FOR CONDENSATE FROM MECHANICAL EQUIPMENT.



1ST FLOOR PLUMBING AND VENT PLAN
P1.1.4 1/8" = 1'-0"

CONTRACTOR NOTE:
 IT IS THE RESPONSIBILITY OF THE CONTRACTOR TO NOTIFY THE ARCHITECT, LANDLORD AND TENANT OF ANY DISCREPANCIES ENCOUNTERED ON THE PLANS OR IN EXISTING SITE CONDITIONS PRIOR TO SUBMISSION OF BID.
 BIDDERS ARE TO VISIT THE SITE AND FAMILIARIZE THEMSELVES WITH EXISTING CONDITIONS AND SATISFY THEMSELVES AS TO THE NATURE AND SCOPE OF THE WORK. THE BASE BID SHALL INCLUDE MODIFICATIONS TO SYSTEMS AND DEVICES AS REQUIRED BY STATE, LOCAL AND FEDERAL CODES. WHETHER INDICATED OR NOT ON CONTRACT DOCUMENTS. THE SUBMISSION OF A BID WILL BE EVIDENCE THAT SUCH AN EXAMINATION AND COMPLIANCE WITH GOVERNING CODES/REGULATIONS HAS BEEN MADE. LATER CLAIMS OR LABOR EQUIPMENT OR MATERIALS REQUIRED, OR OTHER DIFFICULTIES ENCOUNTERED WHICH COULD HAVE BEEN FORESEEN HAD AN EXAMINATION AND CODES/REGULATIONS REVIEW BEEN MADE, WILL NOT BE ALLOWED.

BIM Server: Server2012 - BIM Server (18/01/14)17 Concordia Baton Rouge | Ver: 18.001 | Wednesday, September 02, 2015 | 4:04 PM