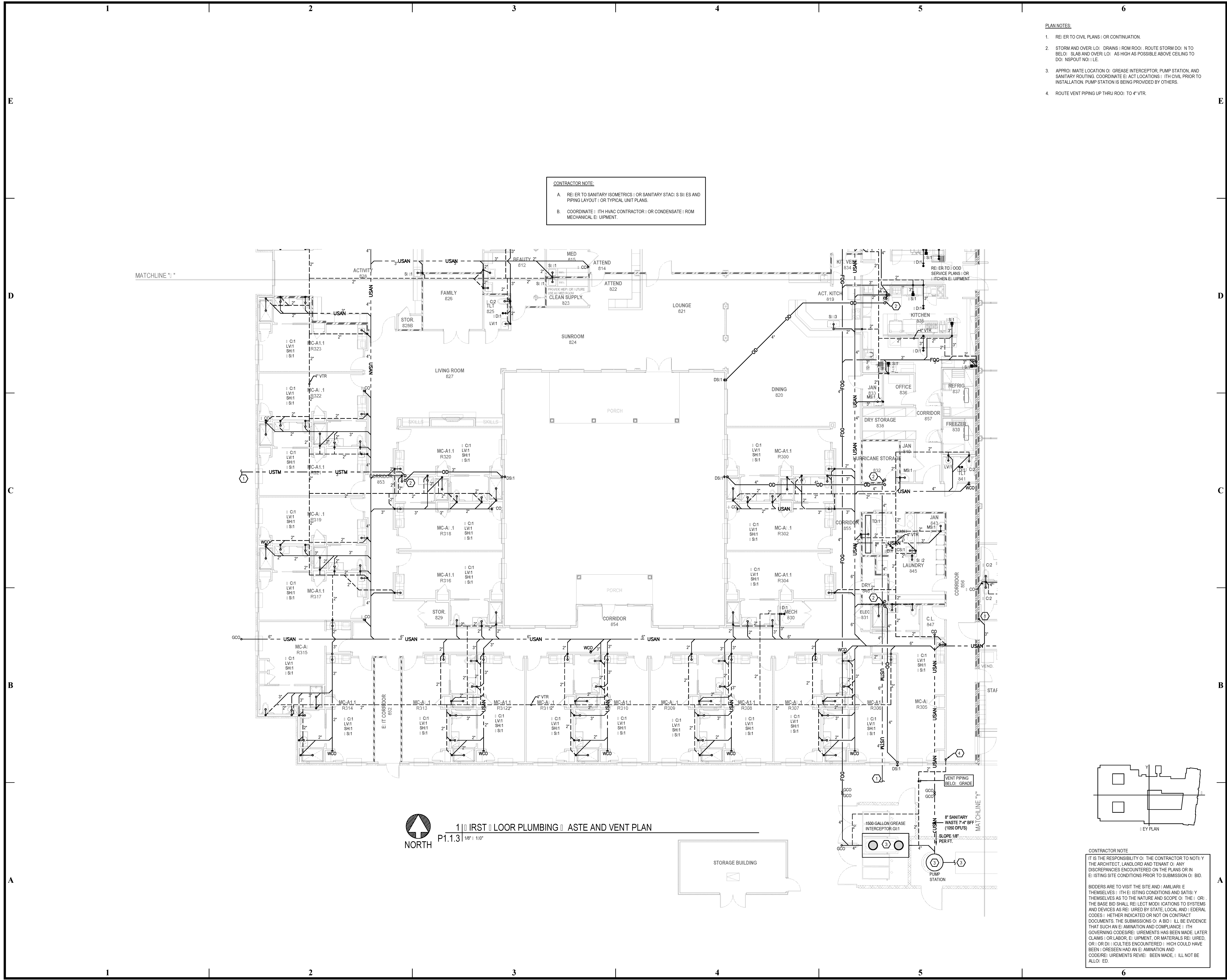


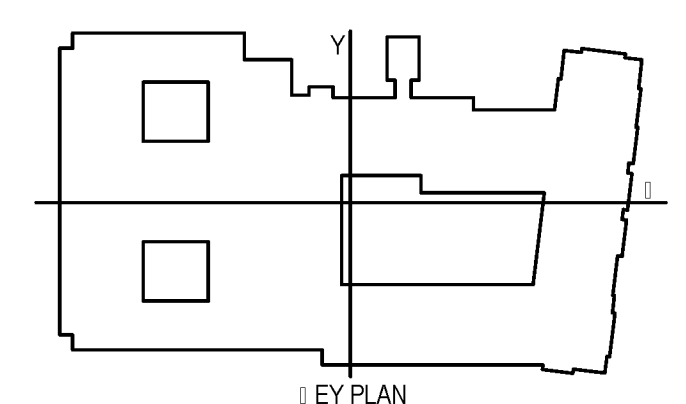
BIM Server: Saved: 2012-11-01 10:41:17 Concordia Baton Rouge | Ver: 18.001 | Wednesday, September 02, 2015 | 4:04 PM



CONTRACTOR NOTE:
A. REFER TO SANITARY ISOMETRICS OR SANITARY STACK SCHEDULES AND PIPING LAYOUT OR TYPICAL UNIT PLANS.
B. COORDINATE WITH HVAC CONTRACTOR FOR CONDENSATE FROM MECHANICAL EQUIPMENT.

- PLAN NOTES:**
- REFER TO CIVIL PLANS FOR CONTINUATION.
 - STORM AND OVERFLOW DRAINS FROM ROOF. ROUTE STORM DRAIN TO BELOW SLAB AND OVERFLOW AS HIGH AS POSSIBLE ABOVE CEILING TO DRAINSPOUT NOISE.
 - APPROXIMATE LOCATION OF GREASE INTERCEPTOR, PUMP STATION, AND SANITARY ROUTING. COORDINATE ELECTRICAL LOCATIONS WITH CIVIL PRIOR TO INSTALLATION. PUMP STATION IS BEING PROVIDED BY OTHERS.
 - ROUTE VENT PIPING THROUGH ROOF TO 4" VTR.

1 | FIRST FLOOR PLUMBING, WASTE AND VENT PLAN
P1.1.3 | 1/8" = 1'-0"

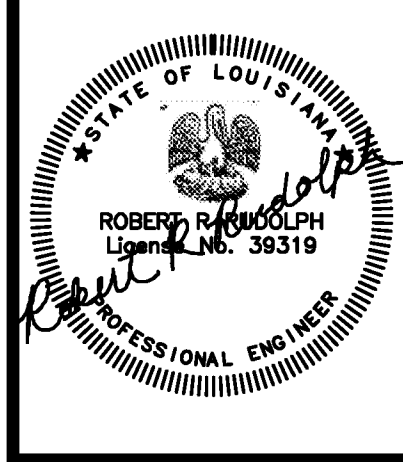


CONTRACTOR NOTE:
IT IS THE RESPONSIBILITY OF THE CONTRACTOR TO NOTIFY THE ARCHITECT, LANDLORD AND TENANT OF ANY DISCREPANCIES ENCOUNTERED ON THE PLANS OR IN EXISTING SITE CONDITIONS PRIOR TO SUBMISSION OF BID.
BIDDERS ARE TO VISIT THE SITE AND FAMILIARIZE THEMSELVES WITH EXISTING CONDITIONS AND SATISFY THEMSELVES AS TO THE NATURE AND SCOPE OF THE WORK. THE BASE BID SHALL REFLECT MODIFICATIONS TO SYSTEMS AND DEVICES AS REQUIRED BY STATE, LOCAL AND FEDERAL CODES. WHETHER INDICATED OR NOT ON CONTRACT DOCUMENTS. THE SUBMISSION OF A BID WILL BE EVIDENCE THAT SUCH AN EXAMINATION AND COMPLIANCE WITH GOVERNING CODES/REGULATIONS HAS BEEN MADE. LATER CLAIMS OR LABOR EQUIPMENT OR MATERIALS REQUIRED, OR OTHER DIFFICULTIES ENCOUNTERED WHICH COULD HAVE BEEN FORESEEN HAD AN EXAMINATION AND CODES/REGULATIONS REVIEW BEEN MADE, WILL NOT BE ALLOWED.

pi architects
3500 Jefferson St. Suite 303
Austin, TX 78731
P: (512) 231-1910
F: (512) 231-1950
www.piarch.com

architectural + master interior + landscape architecture
PE Services
REGISTERED PROFESSIONAL ENGINEER
www.pe-services.com

These plans have been properly examined by the undersigned. I have determined that they comply with existing local Louisiana codes, and have been properly site adapted to use in this area.



WATERSTONE AT BATON ROUGE ASSISTED LIVING & MEMORY CARE
SIEGEN LANE
BATON ROUGE, LA 70810

ISSUE: PERMIT SET

©2015 PI ARCHITECTS, INC.

REVISIONS:

DATE: 03/31/2016
PROJECT NUMBER: PES 15090
SHEET TITLE: FIRST FLOOR PLUMBING, WASTE AND VENT PLAN
SHEET:

P1.1.3