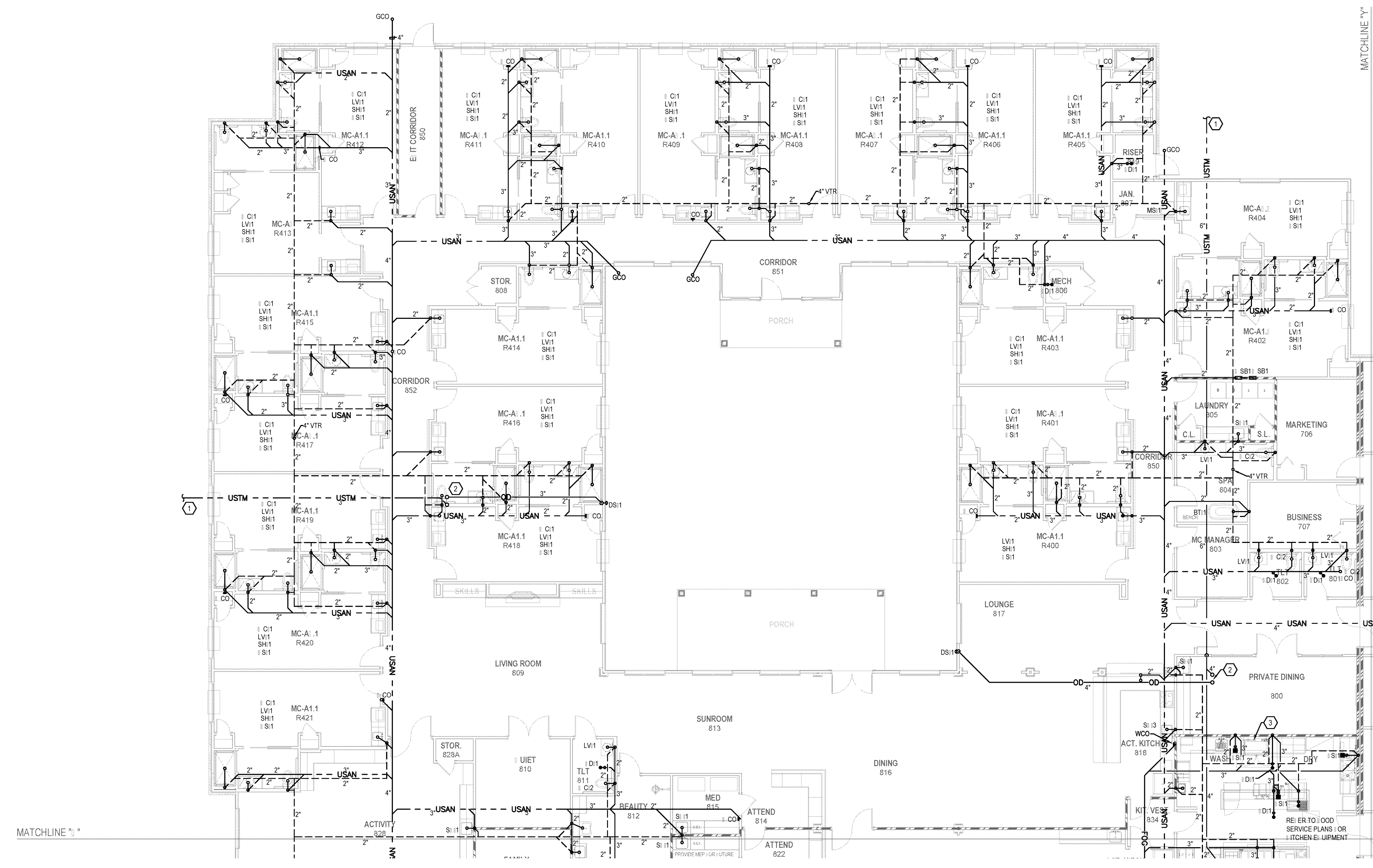


BIM Server: Save/2012 - BIM Server (18/01/14) Concordia Baton Rouge | Ver: 18.001 | Wednesday, September 02, 2015 | 4:04 PM

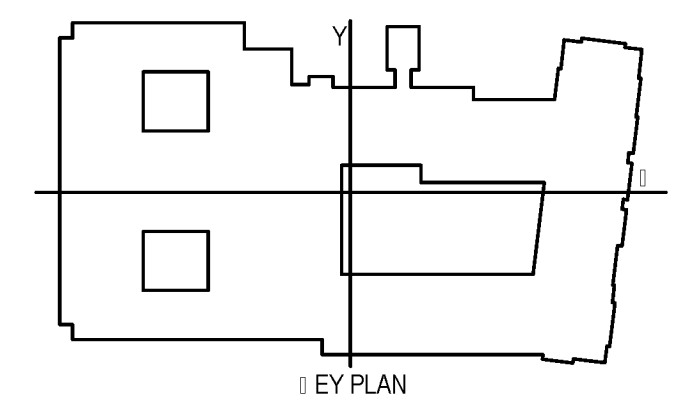
- PLAN NOTES:**
- REFER TO CIVIL PLANS FOR CONTINUATION.
 - STORM AND OVERFLOW DRAINS FROM ROOMS ROUTE STORM DRAIN TO BELOW SLAB AND OVERFLOW AS HIGH AS POSSIBLE ABOVE CEILING TO DRAINSPOUT NOT LESS.
 - PROVIDE DRAIN TEMPERING WITH DISCHARGER AS REQUIRED. VERIFY WITH FOOD SERVICE SUPPLIER.

CONTRACTOR NOTE:

- REFER TO SANITARY ISOMETRICS OR SANITARY STACKS AND PIPING LAYOUT OR TYPICAL UNIT PLANS.
- COORDINATE WITH HVAC CONTRACTOR FOR CONDENSATE FROM MECHANICAL EQUIPMENT.



1 | FIRST FLOOR PLUMBING, WASTE AND VENT PLAN
 P1.1.2 | 1/8" = 1'-0"



CONTRACTOR NOTE:

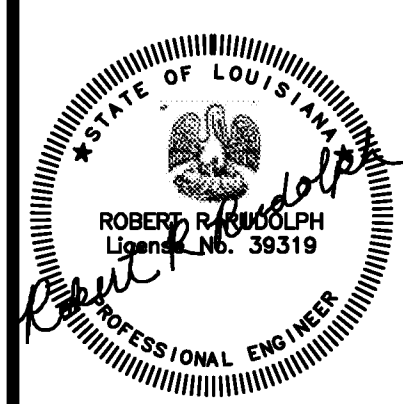
IT IS THE RESPONSIBILITY OF THE CONTRACTOR TO NOTIFY THE ARCHITECT, LANDLORD AND TENANT OF ANY DISCREPANCIES ENCOUNTERED ON THE PLANS OR IN EXISTING SITE CONDITIONS PRIOR TO SUBMISSION OF BID.

BIDDERS ARE TO VISIT THE SITE AND FAMILIARIZE THEMSELVES WITH EXISTING CONDITIONS AND SATISFY THEMSELVES AS TO THE NATURE AND SCOPE OF THE WORK. THE BASE BID SHALL REFLECT MODIFICATIONS TO SYSTEMS AND DEVICES AS REQUIRED BY STATE, LOCAL AND FEDERAL CODES. WHETHER INDICATED OR NOT ON CONTRACT DOCUMENTS. THE SUBMISSION OF A BID WILL BE EVIDENCE THAT SUCH AN EXAMINATION AND COMPLIANCE WITH GOVERNING CODES/REGULATIONS HAS BEEN MADE. LATER CLAIMS FOR LABOR, EQUIPMENT, OR MATERIALS REQUIRED OR OMISSIONS ENCOUNTERED WHICH COULD HAVE BEEN FORESEEN HAD AN EXAMINATION AND CODES/REGULATIONS REVIEW BEEN MADE, WILL NOT BE ALLOWED.

pi architects
 3500 Jefferson St. Suite 303
 Austin, TX 78731
 P: (512) 231-1910
 F: (512) 231-1950

www.piarch.com
 architecture + interior design + landscape architecture
PE Services
 PROFESSIONAL ENGINEERING ARCHITECTS
 1-800-997-0900
 www.pe-services.com

These plans have been properly examined by the undersigned. I have determined that they comply with existing local Louisiana codes, and have been properly adapted to use in this area.



**WATERSTONE AT BATON ROUGE
 ASSISTED LIVING & MEMORY CARE**
 SIEGEN LANE
 BATON ROUGE, LA 70810

ISSUE: PERMIT SET

©2015 PI ARCHITECTS, INC.

REVISIONS:

DATE: 03/31/2016
 PROJECT NUMBER: PES 15090
 SHEET TITLE: FIRST FLOOR PLUMBING, WASTE AND VENT PLAN

SHEET: P1.1.2