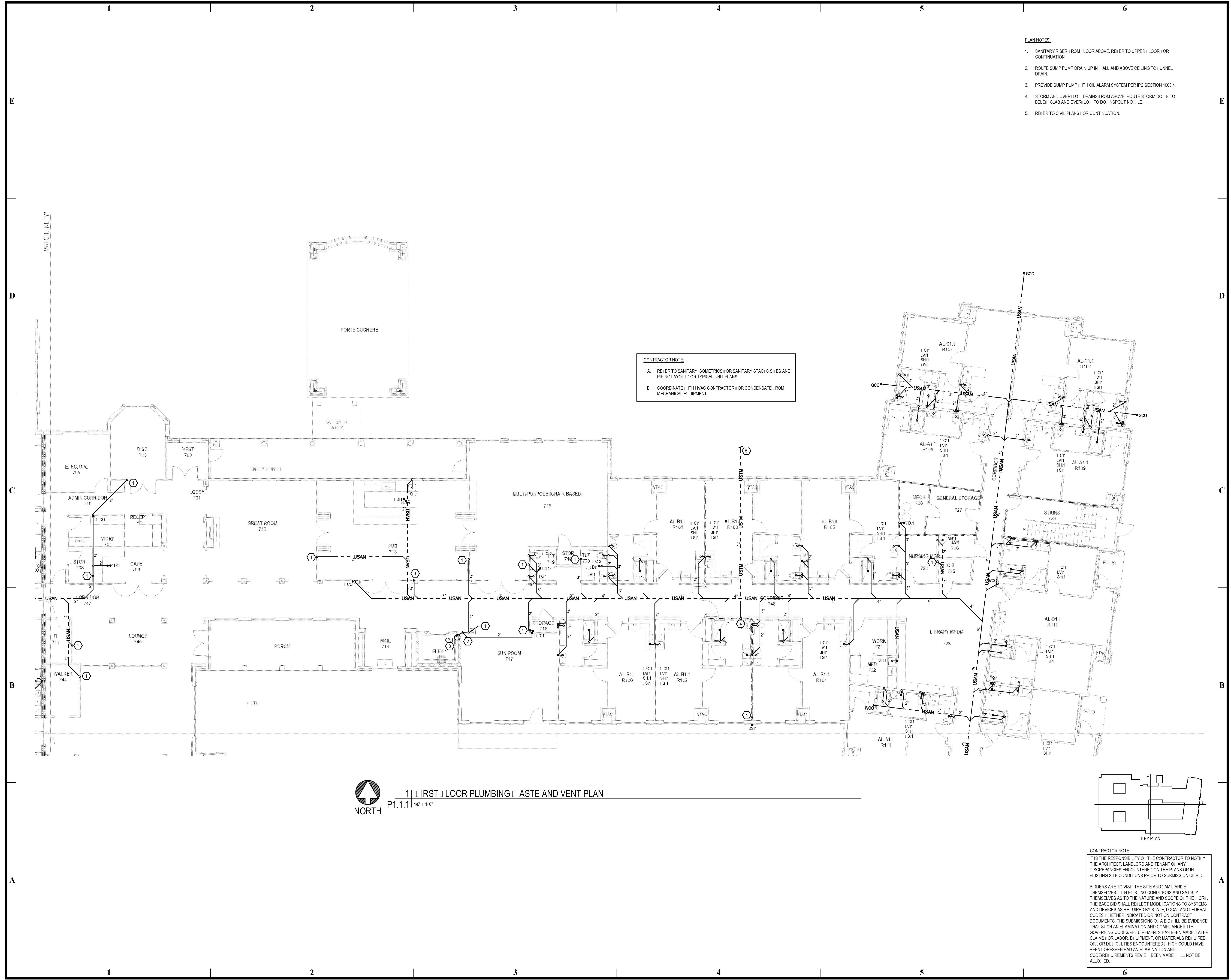


BIM Server: Saved: 2012-11-01 10:41:17 AM (18-D) 1/4/17 Concordia Baton Rouge | Ver: 18.001 | Wednesday, September 02, 2015 | 4:04 PM



- PLAN NOTES:**
- SANITARY RISER (R) FROM FLOOR ABOVE, RE: Riser TO UPPER FLOOR (R) OR CONTINUATION.
 - ROUTE SUMP PUMP DRAIN UP IN ALL AND ABOVE CEILING TO UNNEL DRAIN.
 - PROVIDE SUMP PUMP WITH OIL ALARM SYSTEM PER IPC SECTION 1003.4.
 - STORM AND OVERFLOW DRAIN (R) FROM ABOVE, ROUTE STORM DRAIN TO BELOW SLAB AND OVERFLOW TO DRAINSPOUT NO. 1 LE.
 - RE: Riser TO CIVIL PLANS (R) OR CONTINUATION.

CONTRACTOR NOTE:

- RE: Riser TO SANITARY ISOMETRICS (R) OR SANITARY STAC (R) SIZES AND PIPING LAYOUT (R) OR TYPICAL UNIT PLANS.
- COORDINATE WITH HVAC CONTRACTOR (R) OR CONDENSATE (R) FROM MECHANICAL EQUIPMENT.

CONTRACTOR NOTE:

IT IS THE RESPONSIBILITY OF THE CONTRACTOR TO NOTIFY THE ARCHITECT, LANDLORD AND TENANT OF ANY DISCREPANCIES ENCOUNTERED ON THE PLANS OR IN EXISTING SITE CONDITIONS PRIOR TO SUBMISSION OF BID.

BIDDERS ARE TO VISIT THE SITE AND FAMILIARIZE THEMSELVES WITH EXISTING CONDITIONS AND SATISFY THEMSELVES AS TO THE NATURE AND SCOPE OF THE WORK. THE BASE BID SHALL REFLECT MODIFICATIONS TO SYSTEMS AND DEVICES AS REQUIRED BY STATE, LOCAL AND FEDERAL CODES, WHETHER INDICATED OR NOT ON CONTRACT DOCUMENTS. THE SUBMISSION OF A BID SHALL BE EVIDENCE THAT SUCH AN EXAMINATION AND COMPLIANCE WITH GOVERNING CODES/REGULATIONS HAS BEEN MADE. LATER CLAIMS OR LABOR EQUIPMENT, OR MATERIALS REQUIRED, OR OMISSIONS (OCCURRENCES) WHICH COULD HAVE BEEN FORESEEN HAD AN EXAMINATION AND CODES/REGULATIONS REVIEW BEEN MADE, SHALL NOT BE ALLOWED.

pi architects
 3500 Jefferson St. Suite 303
 Austin, TX 78731
 P: (512) 231-1910
 F: (512) 231-1950
 www.piarch.com

PE Services
 ENGINEERING FOR THE SOUTH
 1-800-997-0800
 www.pe-services.com

These plans have been properly examined by the undersigned. I have determined that they comply with existing local Louisiana codes, and have been properly site adapted to use in this area.

STATE OF LOUISIANA
 PROFESSIONAL ENGINEER
 ROBERT M. MCGOUGH
 License No. 39319

WATERSTONE AT BATON ROUGE ASSISTED LIVING & MEMORY CARE
 SIEGEN LANE
 BATON ROUGE, LA 70810

ISSUE: PERMIT SET

©2015 PI ARCHITECTS, INC.
 REVISIONS:

DATE: 03/31/2016
 PROJECT NUMBER: PES 15090
 SHEET TITLE:
 FIRST FLOOR PLUMBING, VENTS AND VENT PLAN
 SHEET:

P1.1.1