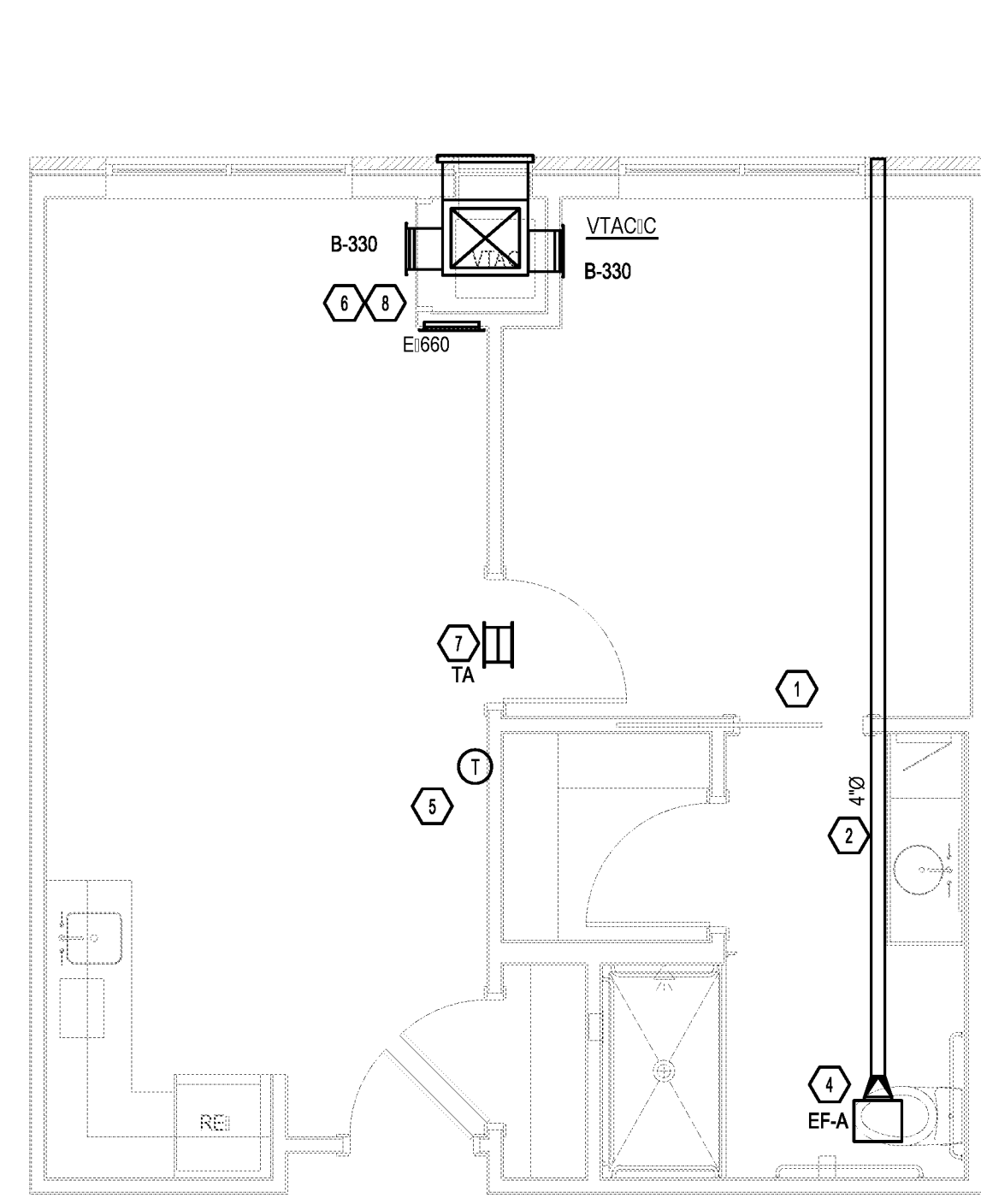
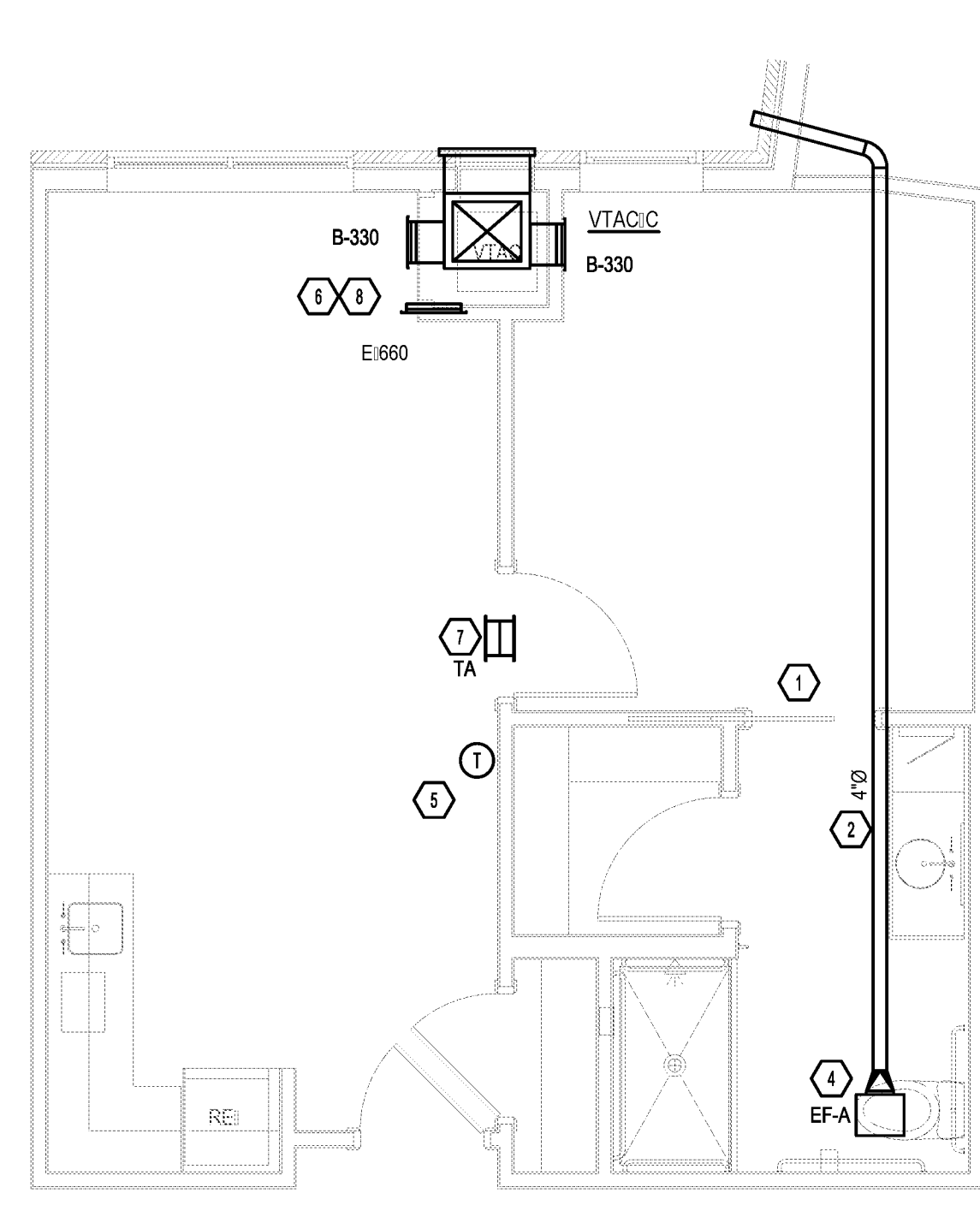


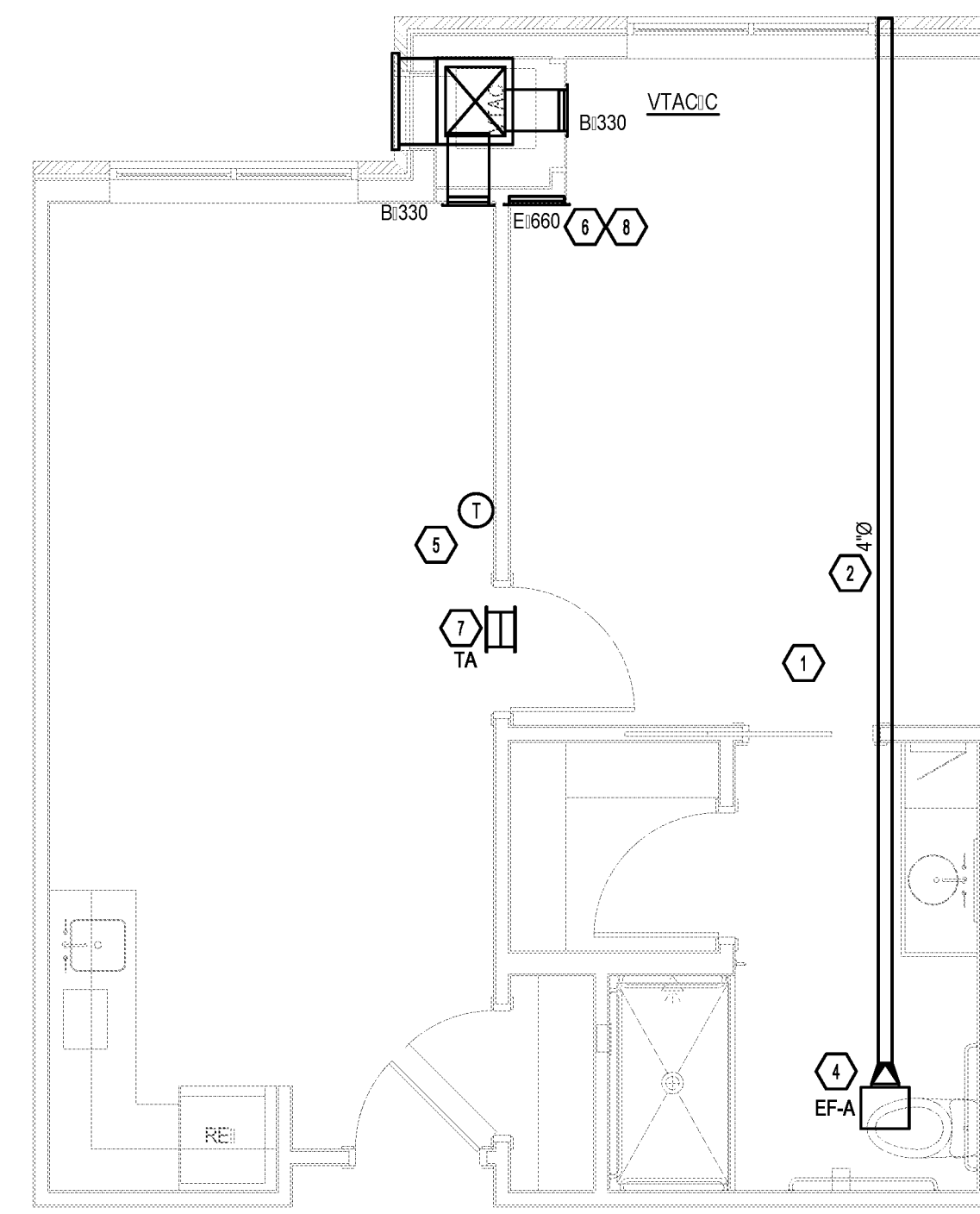
BIM Server: Save/2012 - BIM Server (18 01/14/17 Concordia Baton Rouge) Ver: 18.0011 Wednesday, September 02, 2015 14:04 PM



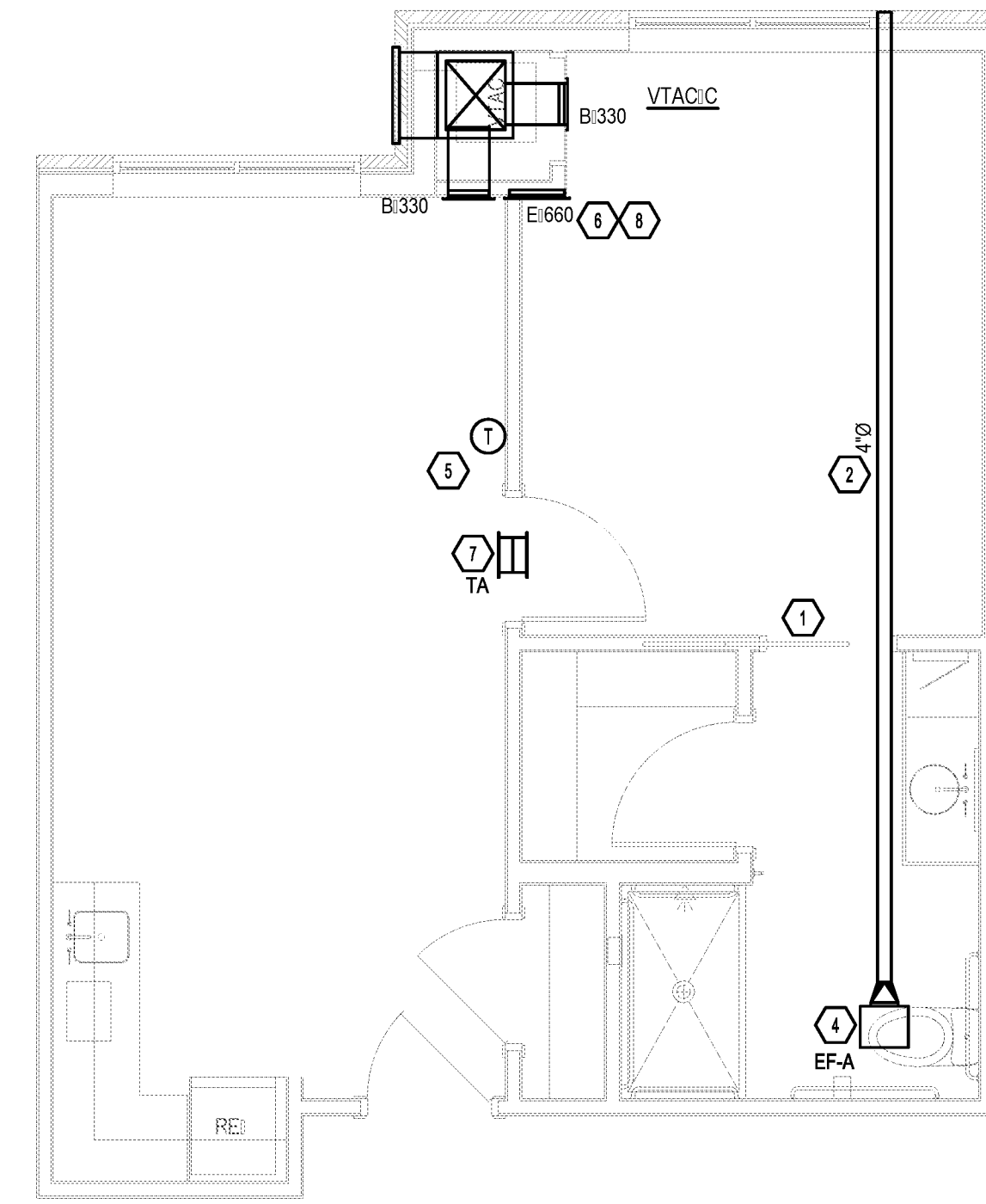
1 | TYPICAL AL UNIT B1.1 & B1.2
M4.2 | 1/4" = 1'-0"



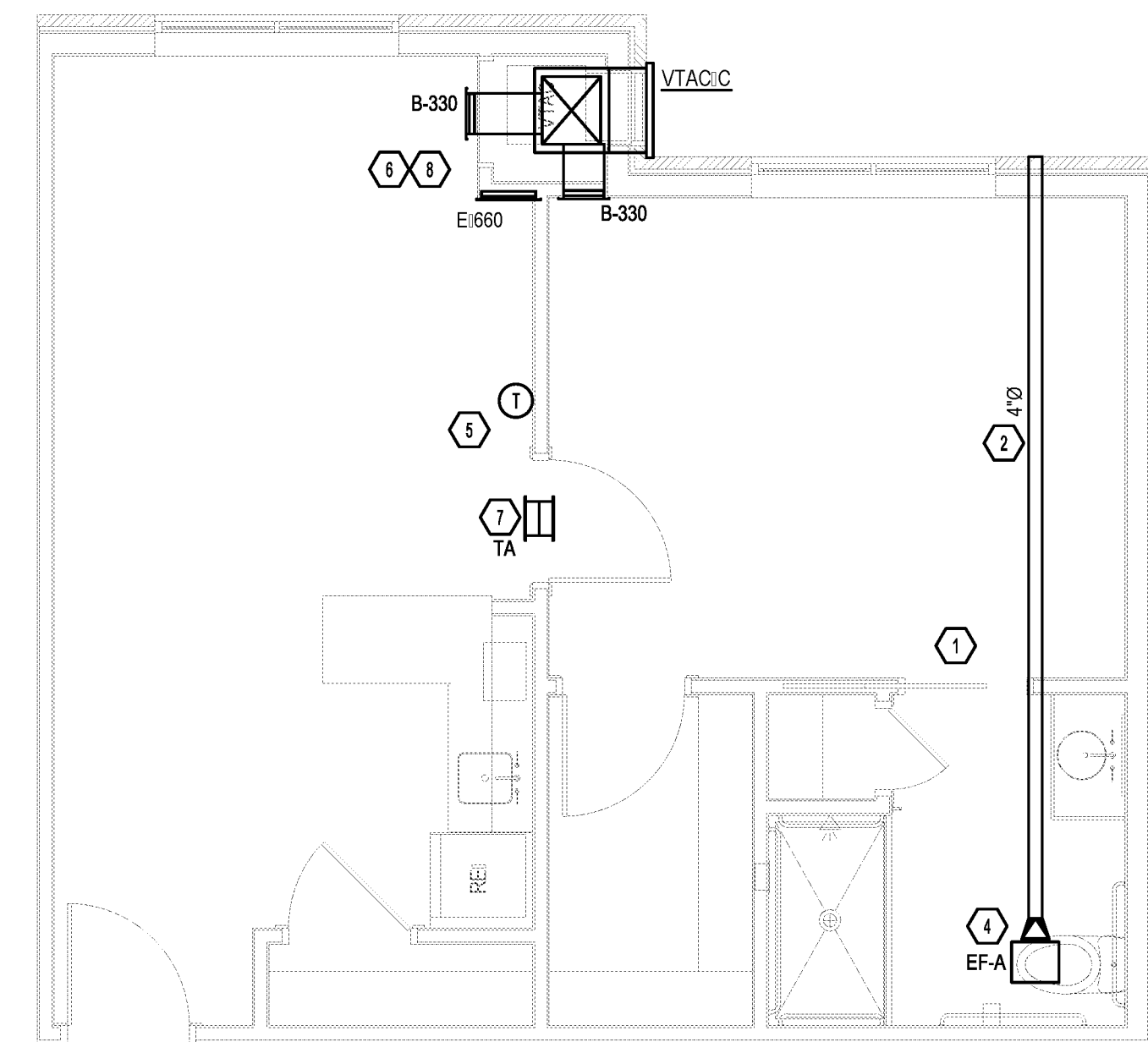
2 | TYPICAL AL UNIT B1.3
M4.2 | 1/4" = 1'-0"



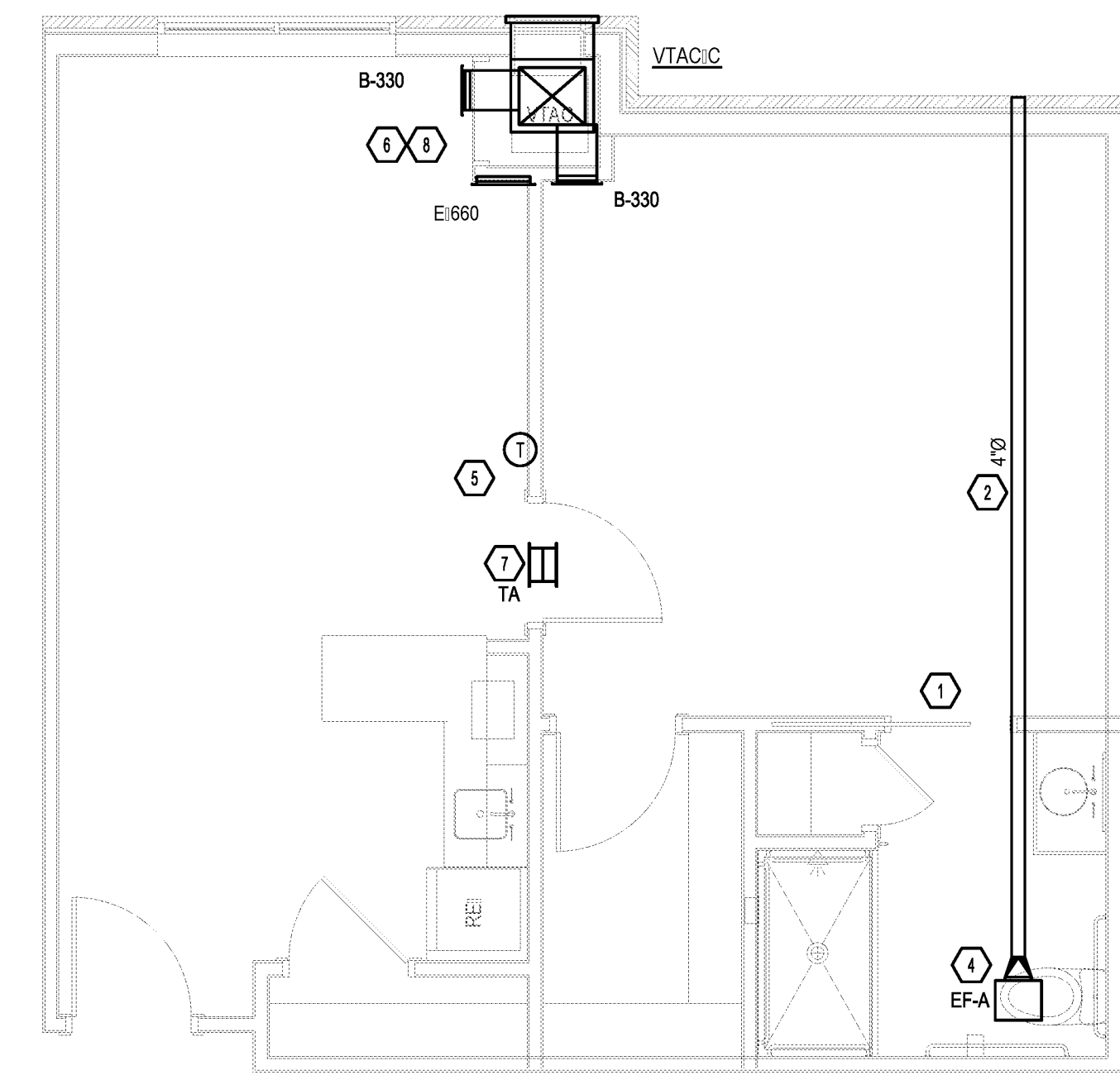
3 | TYPICAL AL UNIT B2.1
M4.2 | 1/4" = 1'-0"



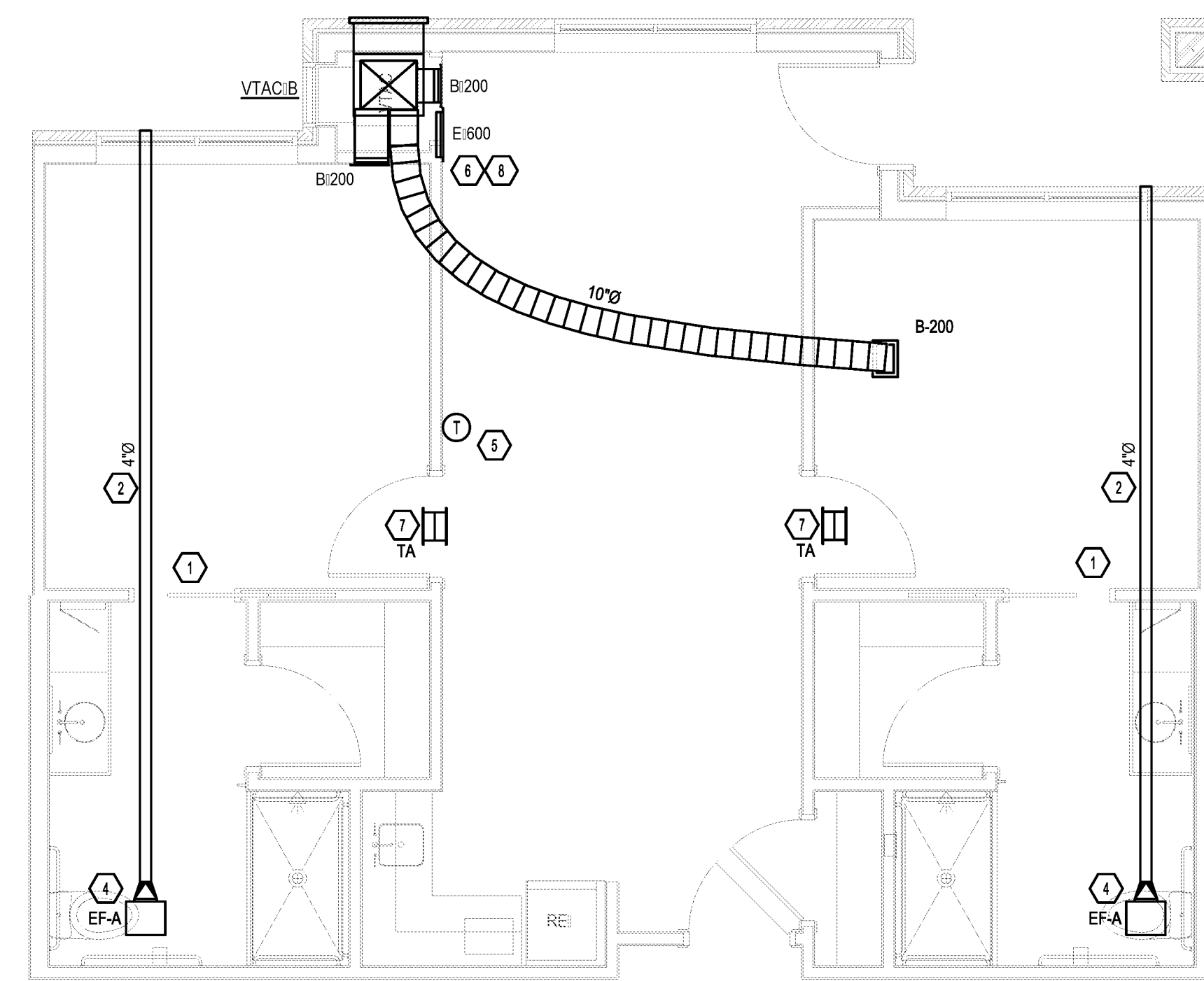
4 | TYPICAL AL UNIT B2.2
M4.2 | 1/4" = 1'-0"



5 | TYPICAL AL UNIT C1.1
M4.2 | 1/4" = 1'-0"



6 | TYPICAL AL UNIT C1.2
M4.2 | 1/4" = 1'-0"



7 | TYPICAL AL UNIT D1.1 & D1.2
M4.2 | 1/4" = 1'-0"



8 | MAINTENANCE BUILDING
M4.2 | 1/4" = 1'-0"

GENERAL NOTES:

- A. REFERENCE MECHANICAL SCHEDULES (OR TA/E/O/S) SCHEDULES.
- B. ROUTE TOILET EXHAUST THROUGH ATTIC UNLESS OTHERWISE NOTED.
- C. CONTRACTOR SHALL COORDINATE DUCT/ROUTING THROUGH ATTIC SPACE TO AVOID STRUCTURAL, ARCHITECTURAL, ELECTRICAL CONFLICT.
- D. TOILET EXHAUST SHALL HAVE BACK DRAIN DAMPERS.
- E. COORDINATE ALL TOILET EXHAUST GRILLES WITH ALL CABINETS AND MEDICINE CABINETS.
- F. THE MECHANICAL CONTRACTOR SHALL COORDINATE THE SUPPLY DUCT DISCHARGE PLENUM AT EACH AIR HANDLER WITH STRUCTURE PRIOR TO INSTALLATION.
- G. MAINTAIN A MINIMUM OF 310" FROM EXHAUST TO ALL OPERABLE DOOR AND WINDOW OPENINGS.
- H. ALL TRANSFER GRILLES LOCATED ABOVE BEDROOM DOORS SHALL BE INSTALLED WITH IN OPENINGS/AGING UPWARD.
- I. MECHANICAL CONTRACTOR SHALL COORDINATE ALL DUCT/ROUTING EQUIPMENT IN BATHROOMS WITH PLUMBING.

PLAN NOTES:

1. UNDERCUT REST ROOM DOOR 1/12".
2. PROVIDE 4" TOILET EXHAUST ROUTED THRU WALL TO CAP. ALL CAPS SHALL BE COORDINATED WITH ARCHITECT PRIOR TO INSTALLATION.
3. CONTRACTOR SHALL COORDINATE ALL SENSOR LOCATIONS WITH OWNER PRIOR TO CONSTRUCTION. CONTRACTOR SHALL PROVIDE MASTER THERMOSTAT LOCATED AT STATION LABEL WITH ROOM NUMBER. COORDINATE EXACT LOCATION WITH OWNER PRIOR TO COMMENCING WORK.
4. CONTRACTOR SHALL PROVIDE CEILING RATED DAMPER AT SECOND FLOOR AL UNITS OR FIRST FLOOR MC UNITS.
5. CONTRACTOR SHALL COORDINATE ALL THERMOSTAT LOCATIONS WITH OWNER PRIOR TO CONSTRUCTION.
6. MECHANICAL CLOSET SHALL BE PLENUM ROOM. ENSURE ALL COMPONENTS INSTALLED ARE PLENUM RATED.
7. PROVIDE 16" 12" TRANSFER AIR GRILLE. MOUNT HIGH SIDE. ALL.
8. ROUTE 3/4" CONDENSATE IN VTAC CLOSET TO DAYLIGHT NOT CAUSE A NUISANCE PER SECTION 307.2.1 OF THE IMC.
9. MOUNT PTACS ON EXTERIOR. ALL. COORDINATE WITH ARCHITECTURAL PLANS (OR EXACT LOCATION).

CONTRACTOR NOTE:

- A. ALL DUCTS, GRILLES, AND EXHAUSTS PENETRATING CEILING MUST BE PROVIDED WITH CEILING RADIATION DAMPER.

CONTRACTOR NOTE:

IT IS THE RESPONSIBILITY OF THE CONTRACTOR TO NOTIFY THE ARCHITECT, LANDLORD AND TENANT OF ANY DISCREPANCIES ENCOUNTERED ON THE PLANS OR IN EXISTING SITE CONDITIONS PRIOR TO SUBMISSION OF BID. BIDDERS ARE TO VISIT THE SITE AND FAMILIARIZE THEMSELVES WITH EXISTING CONDITIONS AND SATISFY THEMSELVES AS TO THE NATURE AND SCOPE OF THE WORK. THE BASE BID SHALL REFLECT MODIFICATIONS TO SYSTEMS AND DEVICES AS REQUIRED BY STATE, LOCAL AND FEDERAL CODES. WHETHER INDICATED OR NOT ON CONTRACT DOCUMENTS. THE SUBMISSION OF A BID WILL BE EVIDENCE THAT SUCH AN EXAMINATION AND COMPLIANCE WITH GOVERNING CODES/REGULATIONS HAS BEEN MADE. LATER CLAIMS OR LABOR EQUIPMENT OR MATERIALS REQUIRED, OR OTHER QUALITIES ENCOUNTERED WHICH COULD HAVE BEEN FORESEEN HAD AN EXAMINATION AND CODES/REGULATIONS REVIEW BEEN MADE, WILL NOT BE ALLOWED.