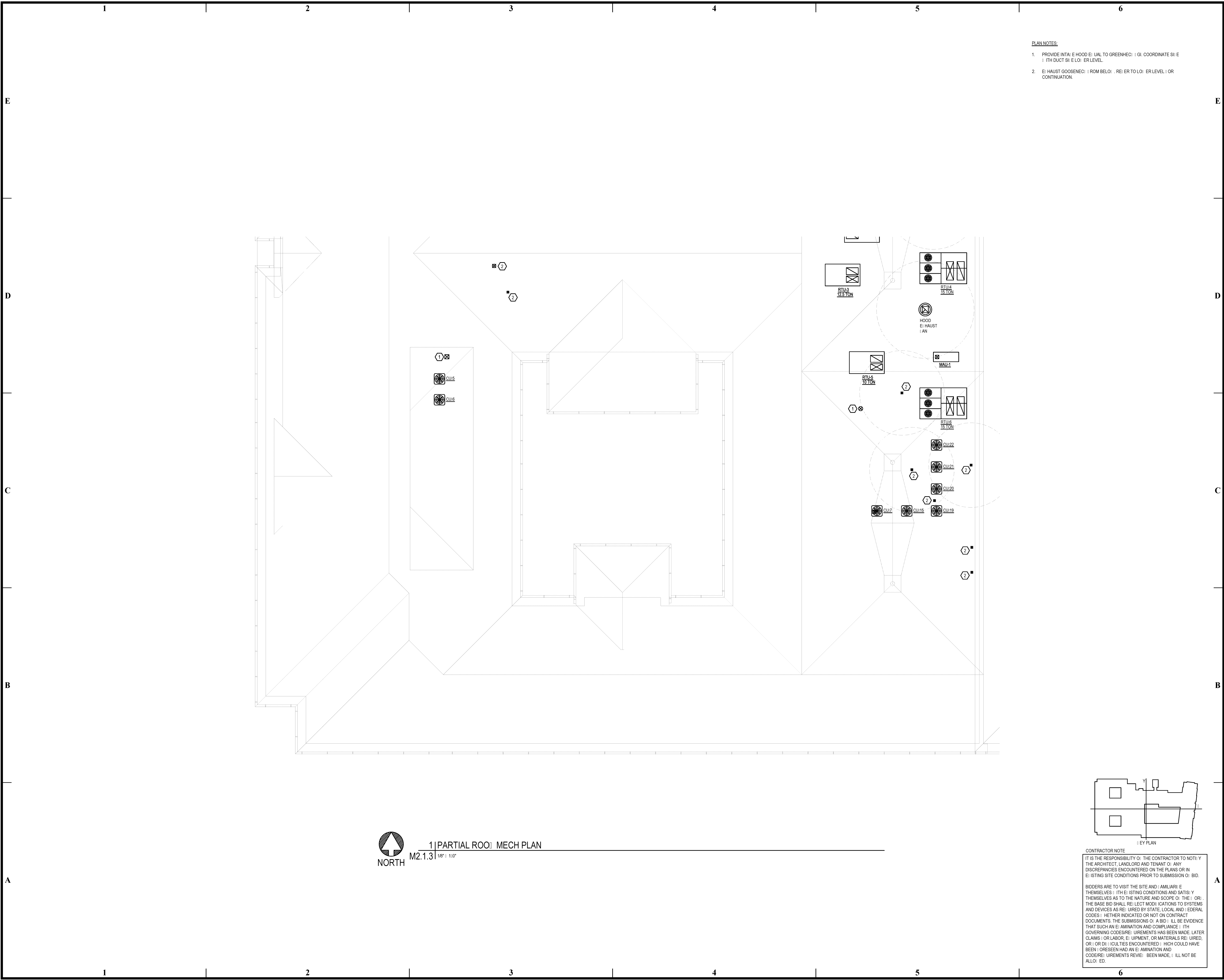


BIM Server: Server2012 - BIM Server (18/01/14)17 Concordia (Baton Rouge) [Ver: 18.001] [Wednesday, September 02, 2015] 4:04 PM



PLAN NOTES:

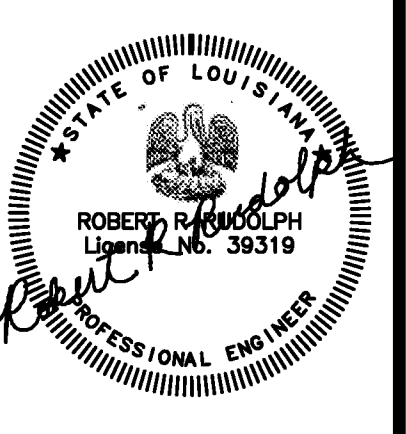
1. PROVIDE INTAKE HOOD EXHAUST TO GREENHCO. COORDINATE WITH DUCT SYSTEM LEVEL.
2. EXHAUST GOOSENECK FROM BELOW REFER TO LOWER LEVEL OR CONTINUATION.

**pi architects**  
 3500 Jefferson St. Suite 303  
 Austin, TX 78731  
 P: (512) 231-1910  
 F: (512) 231-1950  
 www.piarch.com

architecture + master  
 interior + landscape  
 architecture

**PE Services**  
 ENGINEERING FOR HIGH RISES  
 1-800-397-0900  
 www.pe-services.com

These plans have been properly examined by the undersigned. I have determined that they comply with existing local Louisiana codes, and have been properly site adapted to use in this area.



**WATERSTONE AT BATON ROUGE ASSISTED LIVING & MEMORY CARE**  
 SIEGEN LANE  
 BATON ROUGE, LA 70810

ISSUE: PERMIT SET

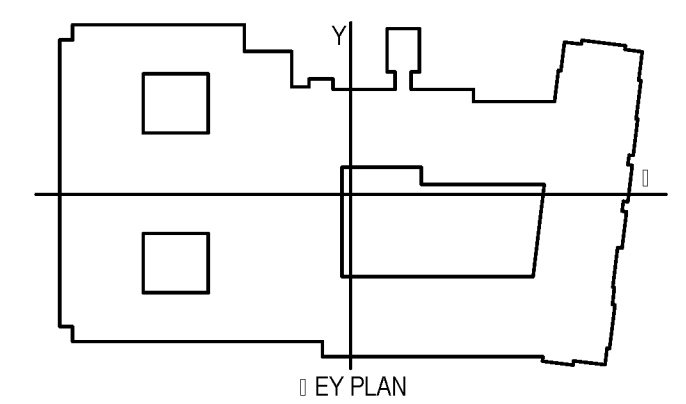
©2015 PI ARCHITECTS, INC.

REVISIONS:

DATE: 03/31/2016  
PROJECT NUMBER: PES 15090  
SHEET TITLE: PARTIAL ROOM MECH PLAN

SHEET: M2.1.3

**1 | PARTIAL ROOM MECH PLAN**  
M2.1.3 1/8" = 1'-0"



CONTRACTOR NOTE

IT IS THE RESPONSIBILITY OF THE CONTRACTOR TO NOTIFY THE ARCHITECT, LANDLORD AND TENANT OF ANY DISCREPANCIES ENCOUNTERED ON THE PLANS OR IN EXISTING SITE CONDITIONS PRIOR TO SUBMISSION OF BID.

BIDDERS ARE TO VISIT THE SITE AND FAMILIARIZE THEMSELVES WITH EXISTING CONDITIONS AND SATISFY THEMSELVES AS TO THE NATURE AND SCOPE OF THE WORK. THE BASE BID SHALL REFLECT MODIFICATIONS TO SYSTEMS AND DEVICES AS REQUIRED BY STATE, LOCAL AND FEDERAL CODES. WHETHER INDICATED OR NOT ON CONTRACT DOCUMENTS. THE SUBMISSIONS OF A BID WILL BE EVIDENCE THAT SUCH AN EXAMINATION AND COMPLIANCE WITH GOVERNING CODES/REGULATIONS HAS BEEN MADE. LATER CLAIMS FOR LABOR, EQUIPMENT, OR MATERIALS REQUIRED, OR FOR OTHER LIABILITIES ENCOUNTERED WHICH COULD HAVE BEEN FORESEEN HAD AN EXAMINATION AND CODES/REGULATIONS REVIEW BEEN MADE, WILL NOT BE ALLOWED.