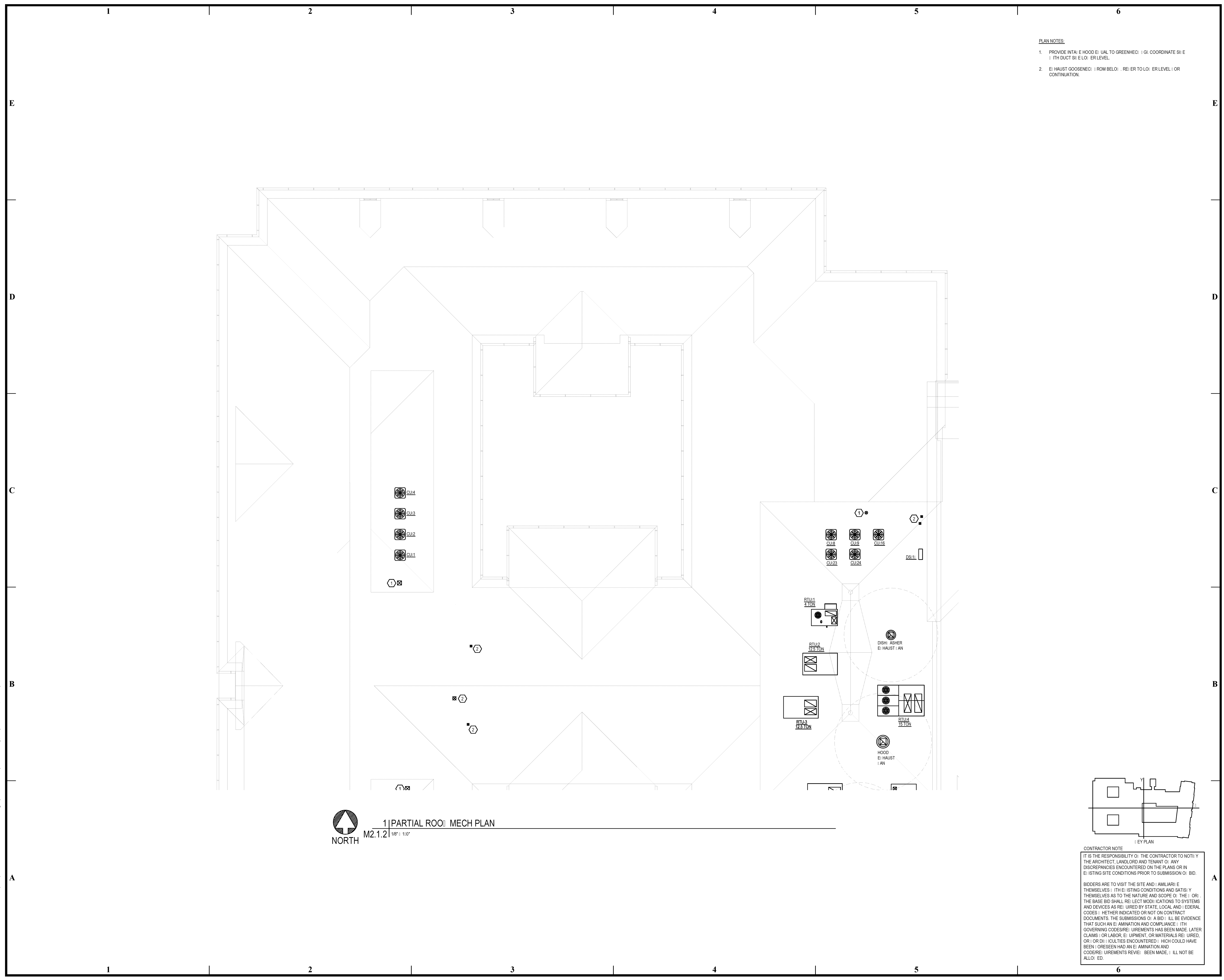
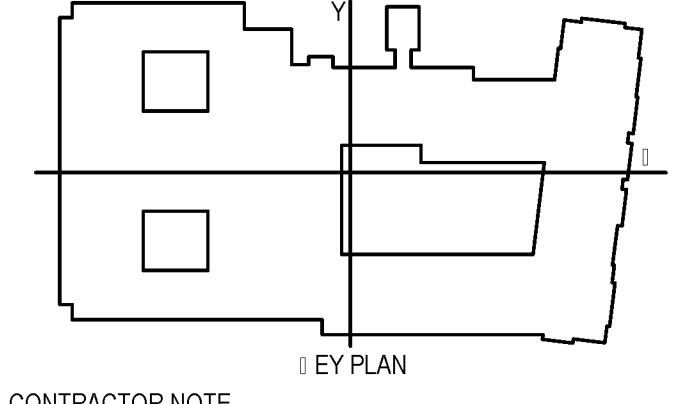


BIM Server: Server2012 - BIM Server (18/01/14017 Concordia Baton Rouge) [Ver: 18.001] [Wednesday, September 02, 2015] 4:04 PM



- PLAN NOTES:**
1. PROVIDE INTAKE HOOD EXHAUST TO GREENHOUSES: (1) COORDINATE WITH ELECTRICAL DUCT SYSTEMS TO EXISTING LEVEL.
  2. EXHAUST GOOSENECKS FROM BELOW: REFER TO EXISTING LEVEL OR CONTINUATION.

**1 | PARTIAL ROOM MECH PLAN**  
 M2.1.2 | 1/8" = 1'-0"



**CONTRACTOR NOTE**

IT IS THE RESPONSIBILITY OF THE CONTRACTOR TO NOTIFY THE ARCHITECT, LANDLORD AND TENANT OF ANY DISCREPANCIES ENCOUNTERED ON THE PLANS OR IN EXISTING SITE CONDITIONS PRIOR TO SUBMISSION OF BID.

BIDDERS ARE TO VISIT THE SITE AND FAMILIARIZE THEMSELVES WITH EXISTING CONDITIONS AND SATISFY THEMSELVES AS TO THE NATURE AND SCOPE OF THE WORK. THE BASE BID SHALL REFLECT MODIFICATIONS TO SYSTEMS AND DEVICES AS REQUIRED BY STATE, LOCAL AND FEDERAL CODES. WHETHER INDICATED OR NOT ON CONTRACT DOCUMENTS, THE SUBMISSION OF A BID WILL BE EVIDENCE THAT SUCH AN EXAMINATION AND COMPLIANCE WITH GOVERNING CODES/REGULATIONS HAS BEEN MADE. LATER CLAIMS OF LABOR, EQUIPMENT, OR MATERIALS REQUIRED, OR OMISSIONS OF QUANTITIES ENCOUNTERED WHICH COULD HAVE BEEN FORESEEN HAD AN EXAMINATION AND CODES/REGULATIONS REVIEW BEEN MADE, WILL NOT BE ALLOWED.



**pi architects**  
 3500 Jefferson St. Suite 303  
 Austin, TX 78731  
 P: (512) 231-1910  
 F: (512) 231-1950  
 www.piarch.com

architecture + master  
 interior + landscape  
 architecture



PE Services  
 ENGINEERING FOR THE BUILDING  
 1-800-367-2600  
 www.pe-services.com

These plans have been properly  
 examined by the undersigned. I  
 have determined that they comply  
 with existing local Louisiana  
 codes, and have been properly  
 site adapted to use in this area.



STATE OF LOUISIANA  
 ROBERT M. MCGOUGH  
 License No. 36319  
 PROFESSIONAL ENGINEER

**WATERSTONE AT BATON ROUGE  
 ASSISTED LIVING & MEMORY CARE**

SIEGEN LANE  
 BATON ROUGE, LA 70810

ISSUE: PERMIT SET

©2015 PI ARCHITECTS, INC.

REVISIONS:

DATE: 03/31/2016  
 PROJECT NUMBER:  
 PES 15090  
 SHEET TITLE:  
 PARTIAL ROOM  
 MECH PLAN  
 SHEET:  
**M2.1.2**