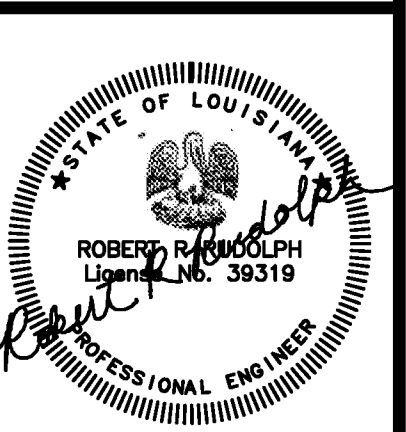


These plans have been properly examined by the undersigned. I have determined that they comply with existing local Louisiana codes, and have been properly site adapted to use in this area.



**WATERSTONE AT BATON ROUGE
 ASSISTED LIVING & MEMORY CARE**
 SIEGEN LANE
 BATON ROUGE, LA 70810

ISSUE: PERMIT SET

©2015 PI ARCHITECTS, INC.
 REVISIONS:

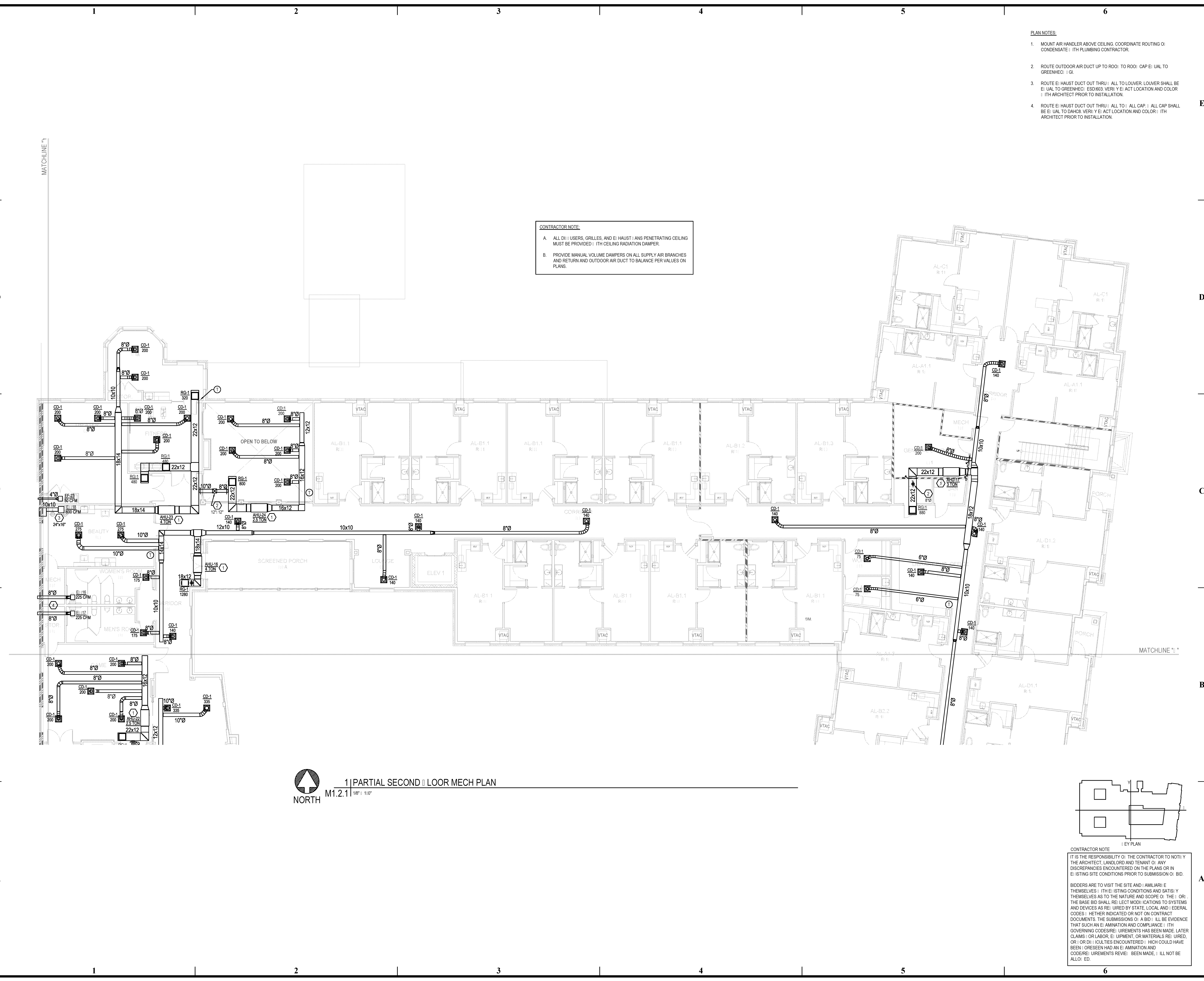
DATE: 03/31/2016
 PROJECT NUMBER: PES 15090
 SHEET TITLE:
 PARTIAL SECOND
 FLOOR MECH PLAN

SHEET:
M1.2.1

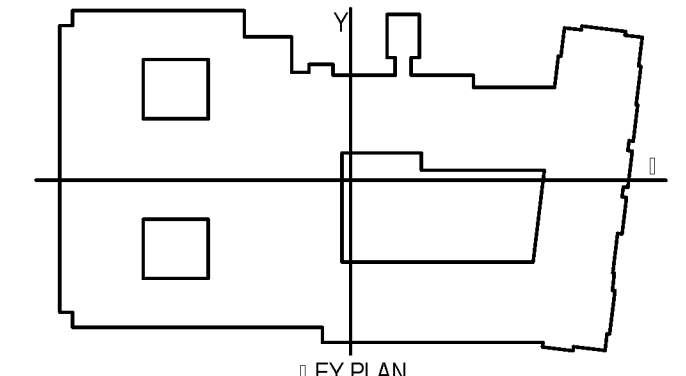
- PLAN NOTES:**
1. MOUNT AIR HANDLER ABOVE CEILING. COORDINATE ROUTING OF CONDENSATE WITH PLUMBING CONTRACTOR.
 2. ROUTE OUTDOOR AIR DUCT UP TO ROOF TO ROOI. CAP EACH UAL TO GREENHCO. IGI.
 3. ROUTE EACH HAUST DUCT OUT THRU EACH LOUVER. LOUVER SHALL BE EACH UAL TO GREENHCO. ESD#03. VERIFY EACH ACT LOCATION AND COLOR WITH ARCHITECT PRIOR TO INSTALLATION.
 4. ROUTE EACH HAUST DUCT OUT THRU EACH UAL TO EACH CAP. EACH CAP SHALL BE EACH UAL TO DANHC. VERIFY EACH ACT LOCATION AND COLOR WITH ARCHITECT PRIOR TO INSTALLATION.

CONTRACTOR NOTE:

- A. ALL DIFFUSERS, GRILLES, AND EACH HAUST AIRS PENETRATING CEILING MUST BE PROVIDED WITH CEILING RADIATION DAMPER.
- B. PROVIDE MANUAL VOLUME DAMPERS ON ALL SUPPLY AIR BRANCHES AND RETURN AND OUTDOOR AIR DUCT TO BALANCE PER VALUES ON PLANS.



1 | PARTIAL SECOND FLOOR MECH PLAN
 M1.2.1 1/8" = 1'-0"



CONTRACTOR NOTE:

IT IS THE RESPONSIBILITY OF THE CONTRACTOR TO NOTIFY THE ARCHITECT, LANDLORD AND TENANT OF ANY DISCREPANCIES ENCOUNTERED ON THE PLANS OR IN EXISTING SITE CONDITIONS PRIOR TO SUBMISSION OF BID.

BIDDERS ARE TO VISIT THE SITE AND FAMILIARIZE THEMSELVES WITH EXISTING CONDITIONS AND SATISFY THEMSELVES AS TO THE NATURE AND SCOPE OF THE WORK. THE BASE BID SHALL REFLECT MODIFICATIONS TO SYSTEMS AND DEVICES AS REQUIRED BY STATE, LOCAL AND FEDERAL CODES. WHETHER INDICATED OR NOT ON CONTRACT DOCUMENTS. THE SUBMISSION OF A BID WILL BE EVIDENCE THAT SUCH AN EXAMINATION AND COMPLIANCE WITH GOVERNING CODES/REGULATIONS HAS BEEN MADE. LATER CLAIMS OR LABOR, EQUIPMENT, OR MATERIALS REQUIRED, OR OMISSIONS ENCOUNTERED WHICH COULD HAVE BEEN FORESEEN HAD AN EXAMINATION AND CODE/REGULATIONS REVIEW BEEN MADE, WILL NOT BE ALLOWED.

BIM Server: Server2012 - BIM Server (18/01/14017 Concordia Baton Rouge) Ver: 18.0011 Wednesday, September 02, 2015 1:04 PM