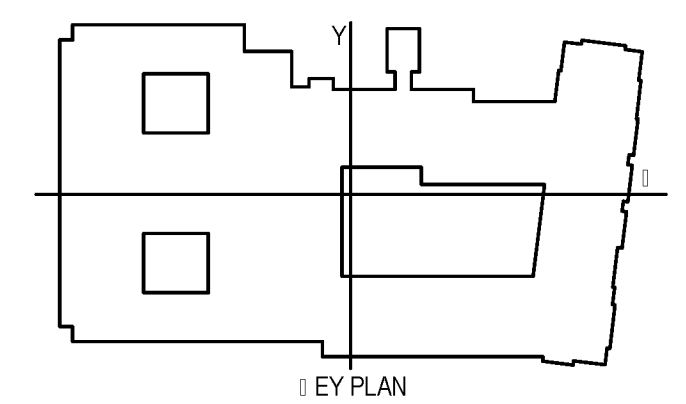
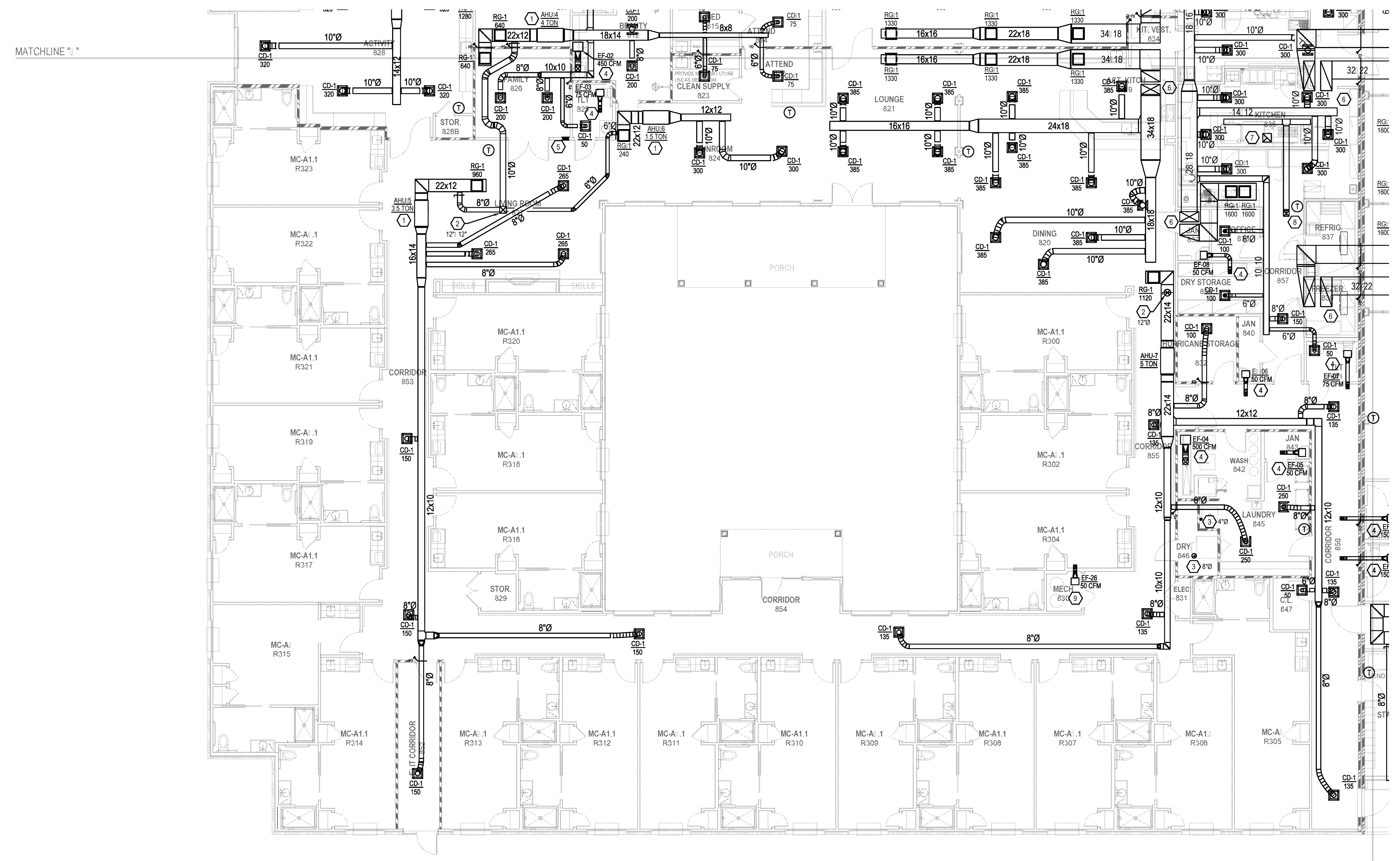


BIM Server: Saved: 2012-11-01 10:40:17 Concordia (Baton Rouge) [Ver: 18.001] Wednesday, September 02, 2015 11:40:04 PM

- PLAN NOTES:**
1. MOUNT AIR HANDLER ABOVE CEILING. COORDINATE ROUTING OF CONDENSATE WITH PLUMBING CONTRACTOR.
 2. ROUTE OUTDOOR AIR DUCT UP TO ROOF TO ROOF. CAP TO U/L TO GREENHEADS.
 3. ROUTE DRYER EXHAUST THRU ROOF AND TERMINATE VIA GOOSENECK.
 4. ROUTE EXHAUST DUCT UP THRU ROOF AND TERMINATE VIA GOOSENECK.
 5. PROVIDE 10/6 TRANSFER GRILLE AS HIGH AS POSSIBLE. COORDINATE COLOR WITH ARCHITECT PRIOR TO INSTALLATION.
 6. SUPPLY AND RETURN DUCT UP TO ROOF. TOP UNIT. REFER TO ROOF PLAN OR CONTINUATION.
 7. HOOD EXHAUST UP THRU ROOF. REFER TO KITCHEN SUPPLIER DRAWINGS FOR EQUIPMENT AND ELECTRICALS.
 8. DUCT UP THRU ROOF TO MAKE UP AIR UNIT. REFER TO KITCHEN SUPPLIER DRAWINGS FOR EQUIPMENT AND ELECTRICALS.
 9. PROVIDE FLOOR OR WATER HEATERS PER MANUFACTURER'S RECOMMENDATIONS. ROUTE LINES THRU ROOF AND TERMINATE VIA CONCENTRIC VENT.

CONTRACTOR NOTE:

- A. ALL DIFFUSERS, GRILLES, AND EXHAUSTS PENETRATING CEILING MUST BE PROVIDED WITH CEILING RADIATION DAMPER.
- B. PROVIDE MANUAL VOLUME DAMPERS ON ALL SUPPLY AIR BRANCHES AND RETURN AND OUTDOOR AIR DUCT TO BALANCE PER VALUES ON PLANS.



1 | PARTIAL FIRST FLOOR MECH PLAN
M1.1.3 | 1/8" = 1'-0"

CONTRACTOR NOTE:

IT IS THE RESPONSIBILITY OF THE CONTRACTOR TO NOTIFY THE ARCHITECT, LANDLORD AND TENANT OF ANY DISCREPANCIES ENCOUNTERED ON THE PLANS OR IN EXISTING SITE CONDITIONS PRIOR TO SUBMISSION OF BID.

BIDDERS ARE TO VISIT THE SITE AND FAMILIARIZE THEMSELVES WITH EXISTING CONDITIONS AND SATISFY THEMSELVES AS TO THE NATURE AND SCOPE OF THE WORK. THE BASE BID SHALL REFLECT MODIFICATIONS TO SYSTEMS AND DEVICES AS REQUIRED BY STATE, LOCAL AND FEDERAL CODES. WHETHER INDICATED OR NOT ON CONTRACT DOCUMENTS. THE SUBMISSION OF A BID WILL BE EVIDENCE THAT SUCH AN EXAMINATION AND COMPLIANCE WITH GOVERNING CODES/REGULATIONS HAS BEEN MADE. LATER CLAIMS OR LABOR, EQUIPMENT, OR MATERIALS REQUIRED, OR CORRECTIONS ENCOUNTERED WHICH COULD HAVE BEEN FORESEEN HAD AN EXAMINATION AND CODES/REGULATIONS REVIEW BEEN MADE, WILL NOT BE ALLOWED.

pi architects
3500 Jefferson St. Suite 303
Austin, TX 78731
P: (512) 231-1910
F: (512) 231-1950
www.piarch.com
architecture + interior design
interior design + architecture

PE Services
PROFESSIONAL ENGINEERING
1-800-997-0900
www.pe-services.com

These plans have been properly examined by the undersigned. I have determined that they comply with existing local Louisiana codes, and have been properly adapted to use in this area.

STATE OF LOUISIANA
ROBERT M. GIBSON
Professional Engineer
License No. 30319

WATERSTONE AT BATON ROUGE ASSISTED LIVING & MEMORY CARE
SIEGEN LANE
BATON ROUGE, LA 70810

ISSUE: PERMIT SET

©2015 PI ARCHITECTS, INC.

REVISIONS:

DATE: 03/31/2016
PROJECT NUMBER: PES 15090
SHEET TITLE: PARTIAL FIRST FLOOR MECH PLAN
SHEET: M1.1.3