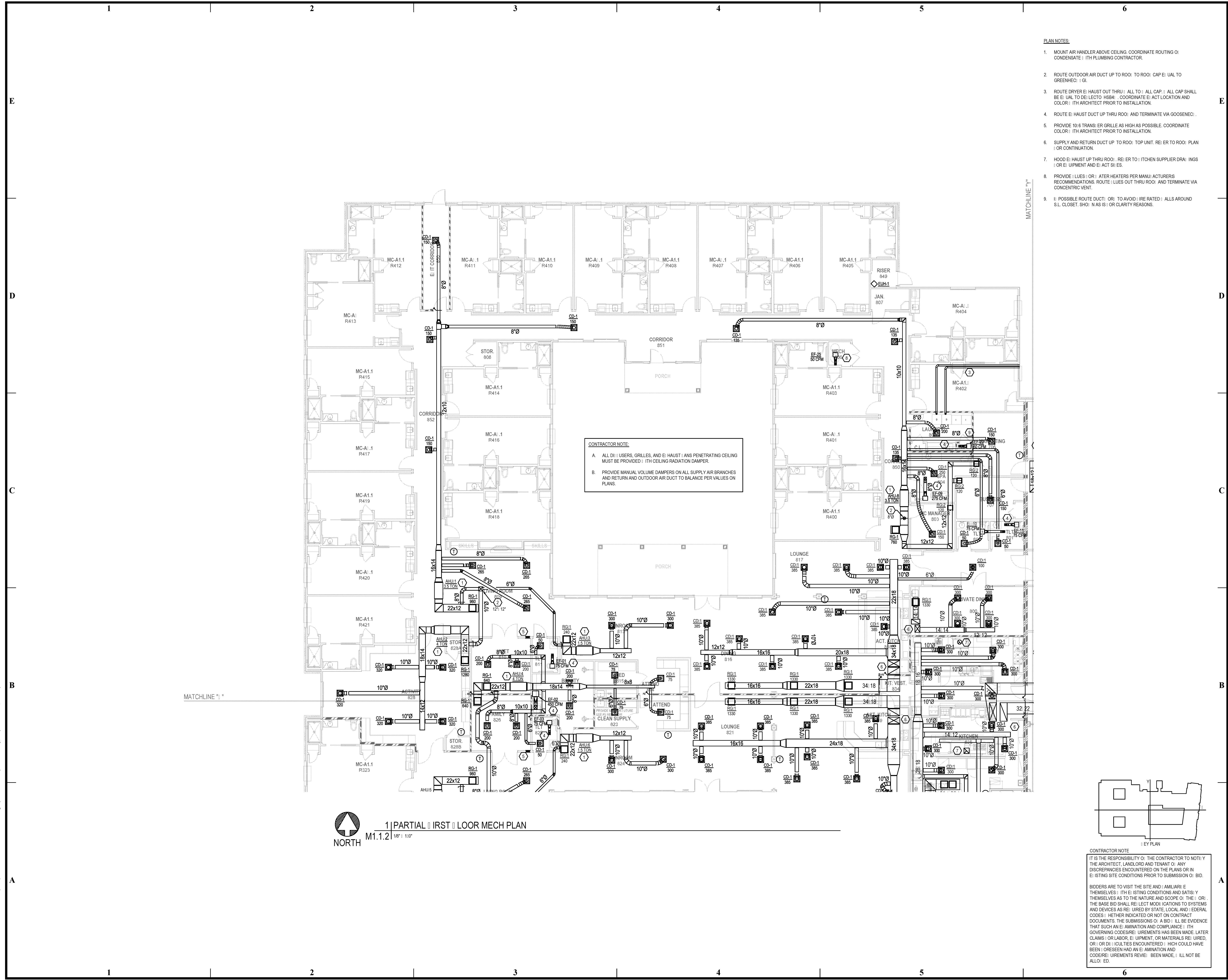
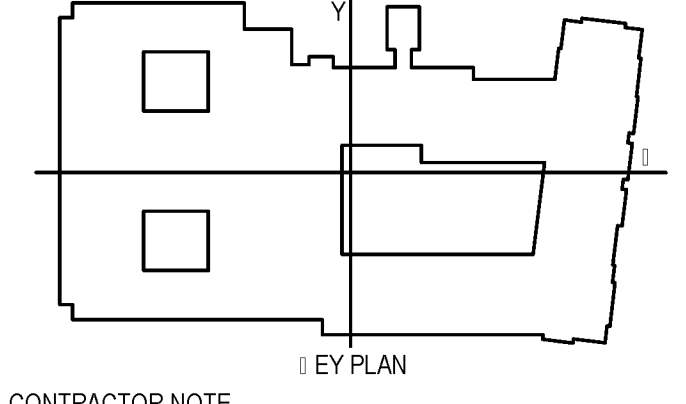


BIM Server: Saved: 2012-11-01 10:40:17 Concordia Baton Rouge | Ver: 18.001 | Wednesday, September 02, 2015 | 4:04 PM



1 | PARTIAL FIRST FLOOR MECH PLAN
M1.1.2 | 1/8" = 1'-0"



CONTRACTOR NOTE
IT IS THE RESPONSIBILITY OF THE CONTRACTOR TO NOTIFY THE ARCHITECT, LANDLORD AND TENANT OF ANY DISCREPANCIES ENCOUNTERED ON THE PLANS OR IN THE EXISTING SITE CONDITIONS PRIOR TO SUBMISSION OF BID.
BIDDERS ARE TO VISIT THE SITE AND FAMILIARIZE THEMSELVES WITH THE EXISTING CONDITIONS AND SATISFY THEMSELVES AS TO THE NATURE AND SCOPE OF THE WORK. THE BASE BID SHALL REFLECT MODIFICATIONS TO SYSTEMS AND DEVICES AS REQUIRED BY STATE, LOCAL AND FEDERAL CODES. WHETHER INDICATED OR NOT ON CONTRACT DOCUMENTS, THE SUBMISSIONS OF A BID WILL BE EVIDENCE THAT SUCH AN EXAMINATION AND COMPLIANCE WITH GOVERNING CODES/REGULATIONS HAS BEEN MADE. LATER CLAIMS OR LABOR, EQUIPMENT, OR MATERIALS REQUIRED, OR OTHER COSTS ENCOUNTERED WHICH COULD HAVE BEEN FORESEEN HAD AN EXAMINATION AND CODES/REGULATIONS REVIEW BEEN MADE, WILL NOT BE ALLOWED.

- PLAN NOTES:
1. MOUNT AIR HANDLER ABOVE CEILING. COORDINATE ROUTING OF CONDENSATE WITH PLUMBING CONTRACTOR.
 2. ROUTE OUTDOOR AIR DUCT UP TO ROOF. TO ROOF: CAP EQUAL TO GREENHEAD.
 3. ROUTE DRYER EXHAUST OUT THRU ROOF. ALL TOILET ALL CAP. ALL CAP SHALL BE EQUAL TO DUCT HUB. COORDINATE EXHAUST LOCATION AND COLOR WITH ARCHITECT PRIOR TO INSTALLATION.
 4. ROUTE EXHAUST DUCT UP THRU ROOF AND TERMINATE VIA GOOSENECK.
 5. PROVIDE 10/6 TRANSFER GRILLE AS HIGH AS POSSIBLE. COORDINATE COLOR WITH ARCHITECT PRIOR TO INSTALLATION.
 6. SUPPLY AND RETURN DUCT UP TO ROOF. TOP UNIT. REFER TO ROOF PLAN FOR CONTINUATION.
 7. HOOD EXHAUST UP THRU ROOF. REFER TO KITCHEN SUPPLIER DRAWINGS FOR EQUIPMENT AND EXHAUSTS.
 8. PROVIDE LINES OR WATER HEATERS PER MANUFACTURER'S RECOMMENDATIONS. ROUTE LINES OUT THRU ROOF AND TERMINATE VIA CONCENTRIC VENT.
 9. IF POSSIBLE ROUTE DUCT OR TO AVOID FIRE RATED WALLS AROUND SLOTTED CLOSET. IN AS IS OR CLARITY REASONS.

pi architects
3500 Jefferson St. Suite 303
Austin, TX 78731
P: (512) 231-1910
F: (512) 231-1950
www.piaarch.com
architecture + master
interior planning + landscape
architecture
PE Services
PROFESSIONAL ENGINEERING FOR THE ARCHITECT
www.pe-services.com
These plans have been properly examined by the undersigned. I have determined that they comply with existing local Louisiana codes, and have been properly site adapted to use in this area.

**WATERSTONE AT BATON ROUGE
ASSISTED LIVING & MEMORY CARE**
SIEGEN LANE
BATON ROUGE, LA 70810

ISSUE: PERMIT SET
©2015 PI ARCHITECTS, INC.

REVISIONS:
DATE: 03/31/2016
PROJECT NUMBER: PES 15090
SHEET TITLE: PARTIAL FIRST FLOOR MECH PLAN
SHEET: M1.1.2