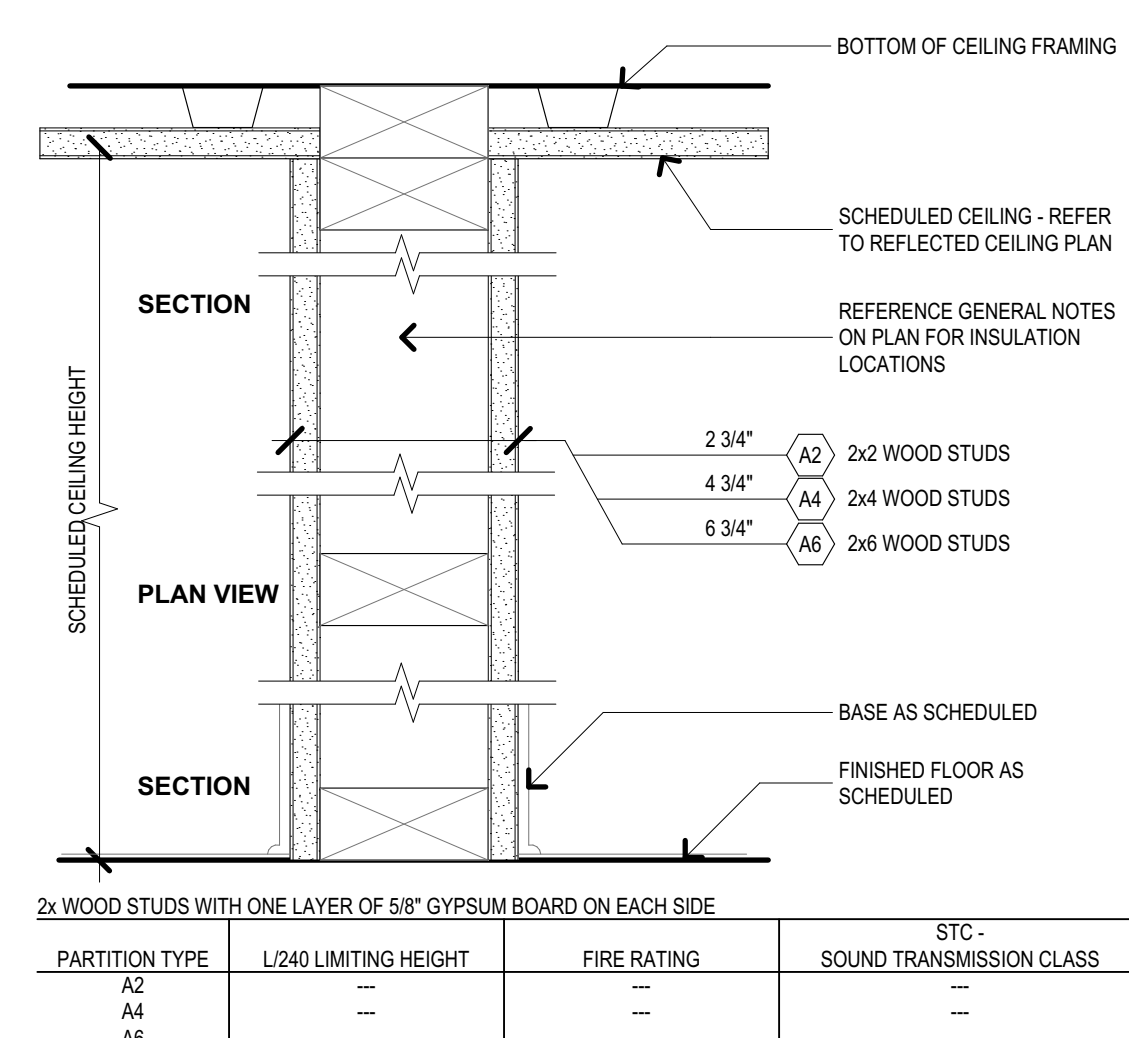
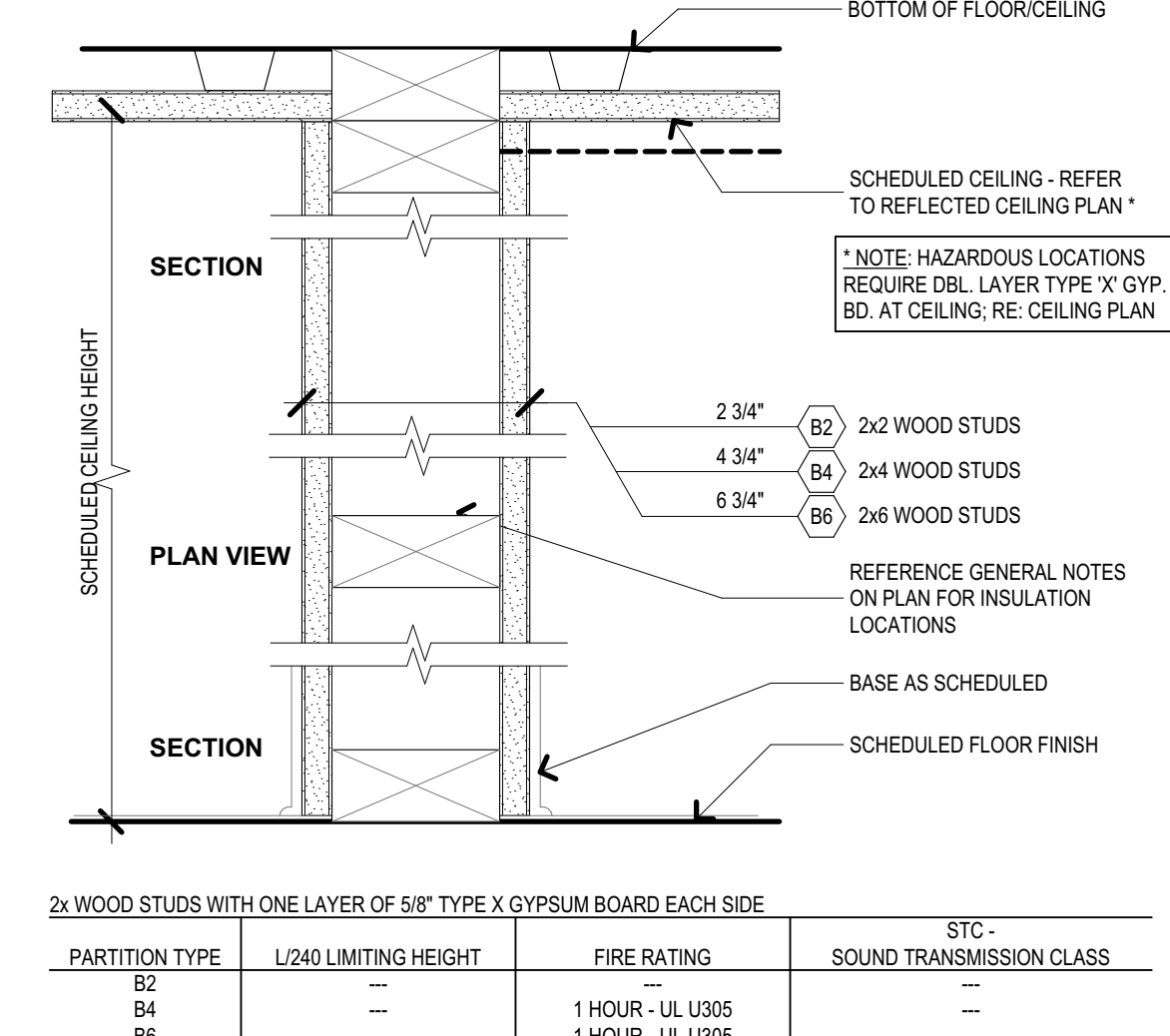


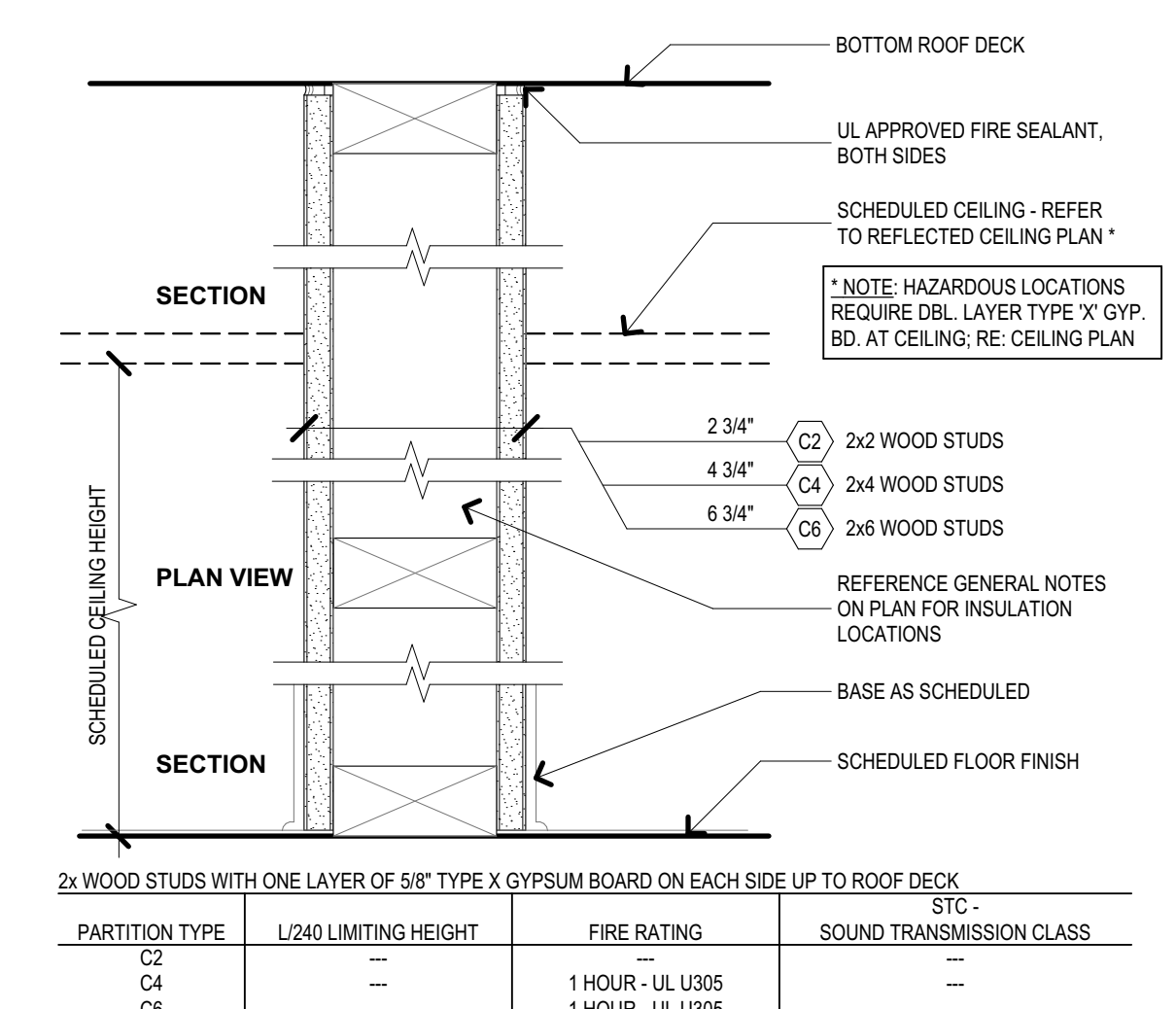
BIM Server: SERVER2015 - BIM Server 19/10/17 Concordia Baton Rouge | Ver. 19.0011 | Friday, April 01, 2016 | 12:04 AM



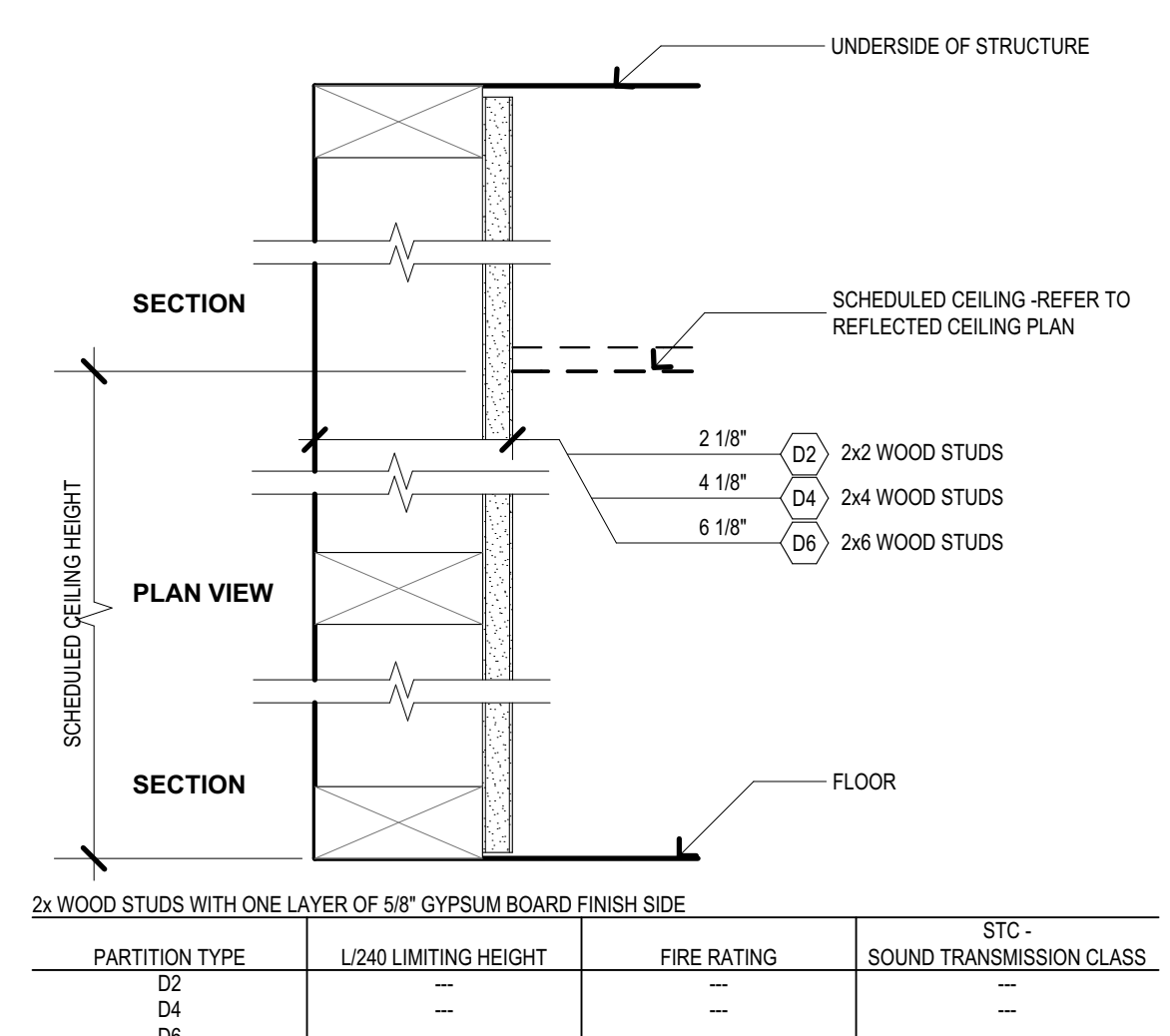
A PARTITION A
SCALE: 3" = 1'-0"



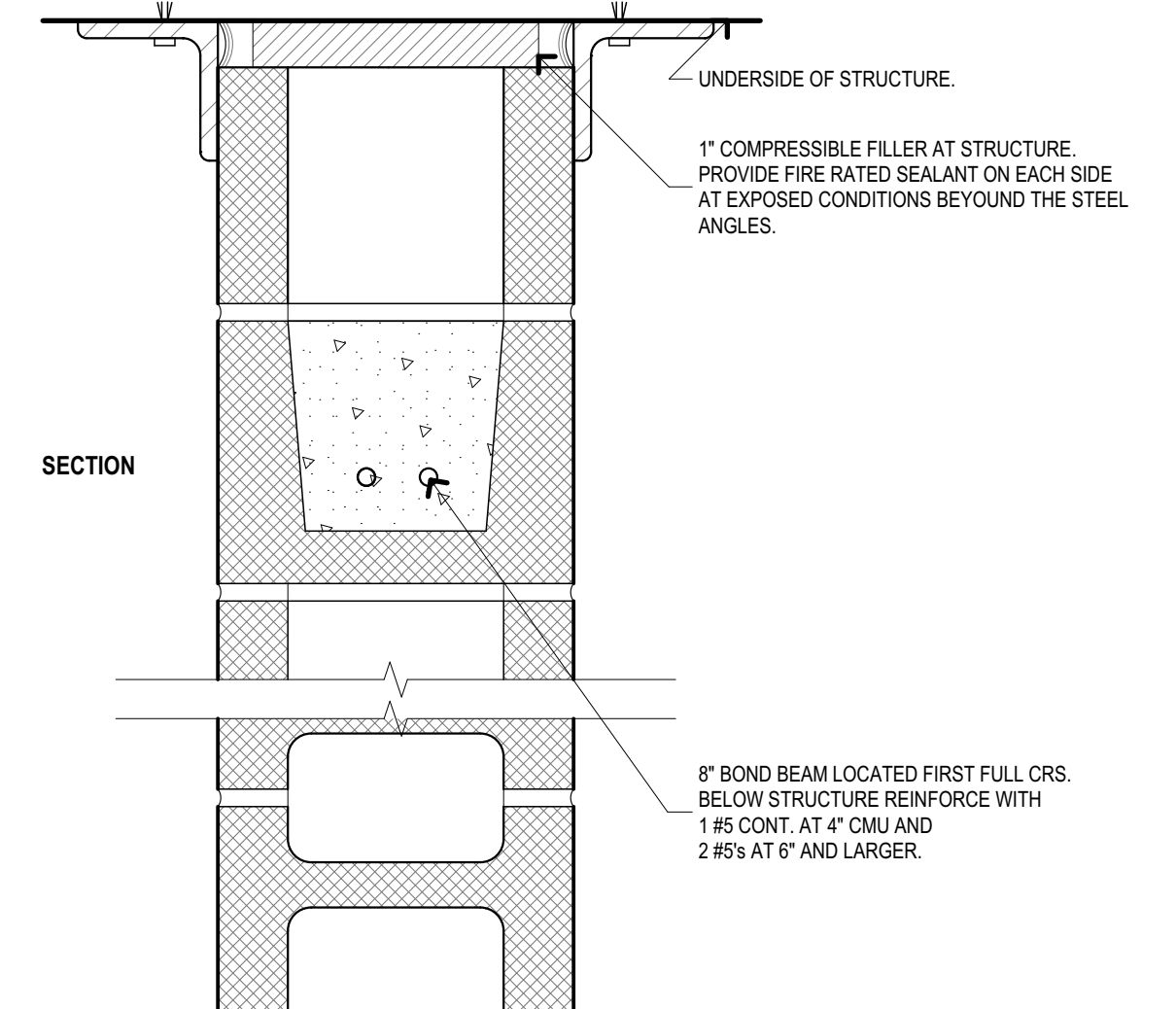
B PARTITION B - 1 HOUR
SCALE: 3" = 1'-0" 1 HR RATED



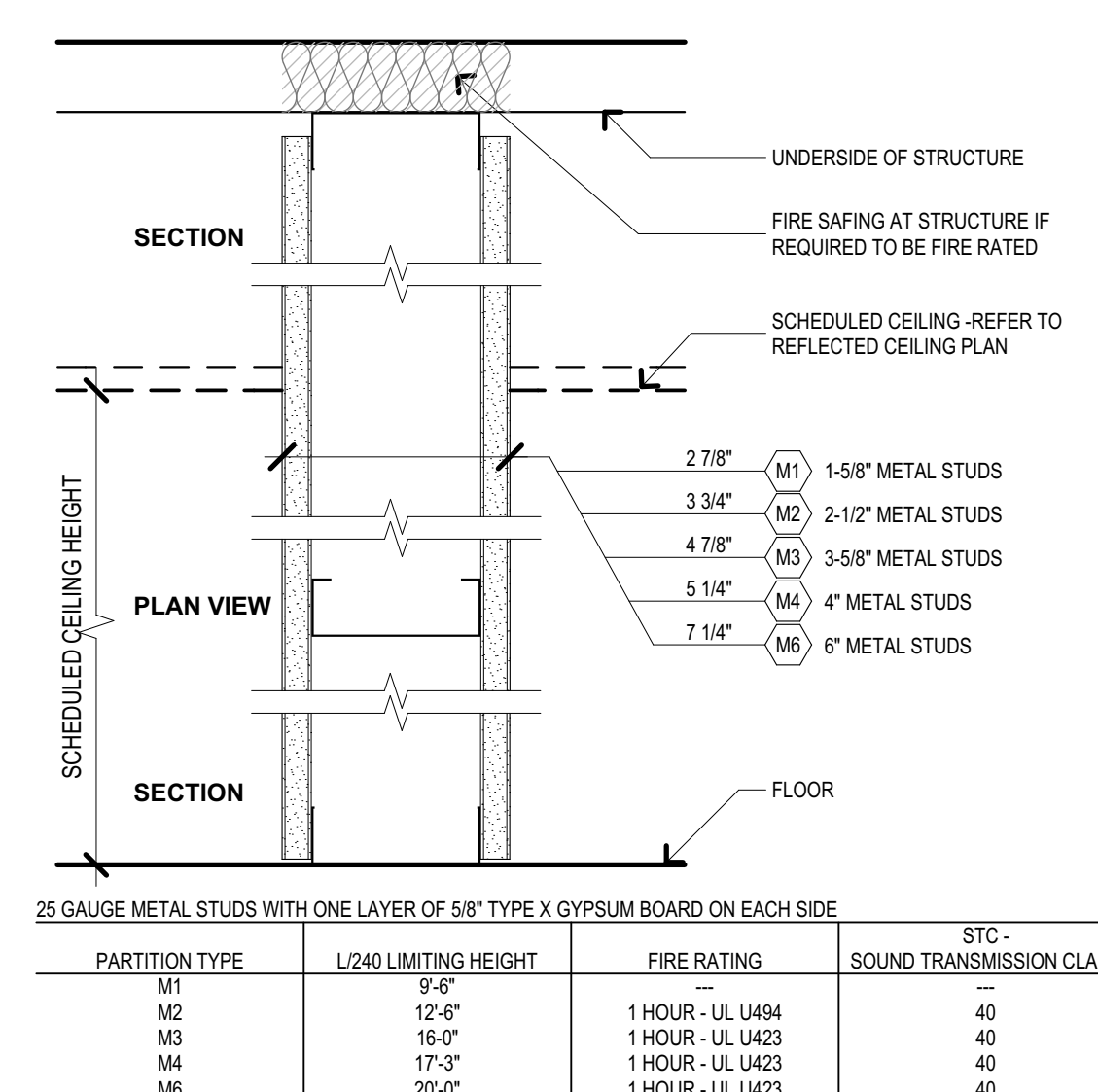
C PARTITION C - SMOKE PARTITION
SCALE: 3" = 1'-0" 1 HR RATED



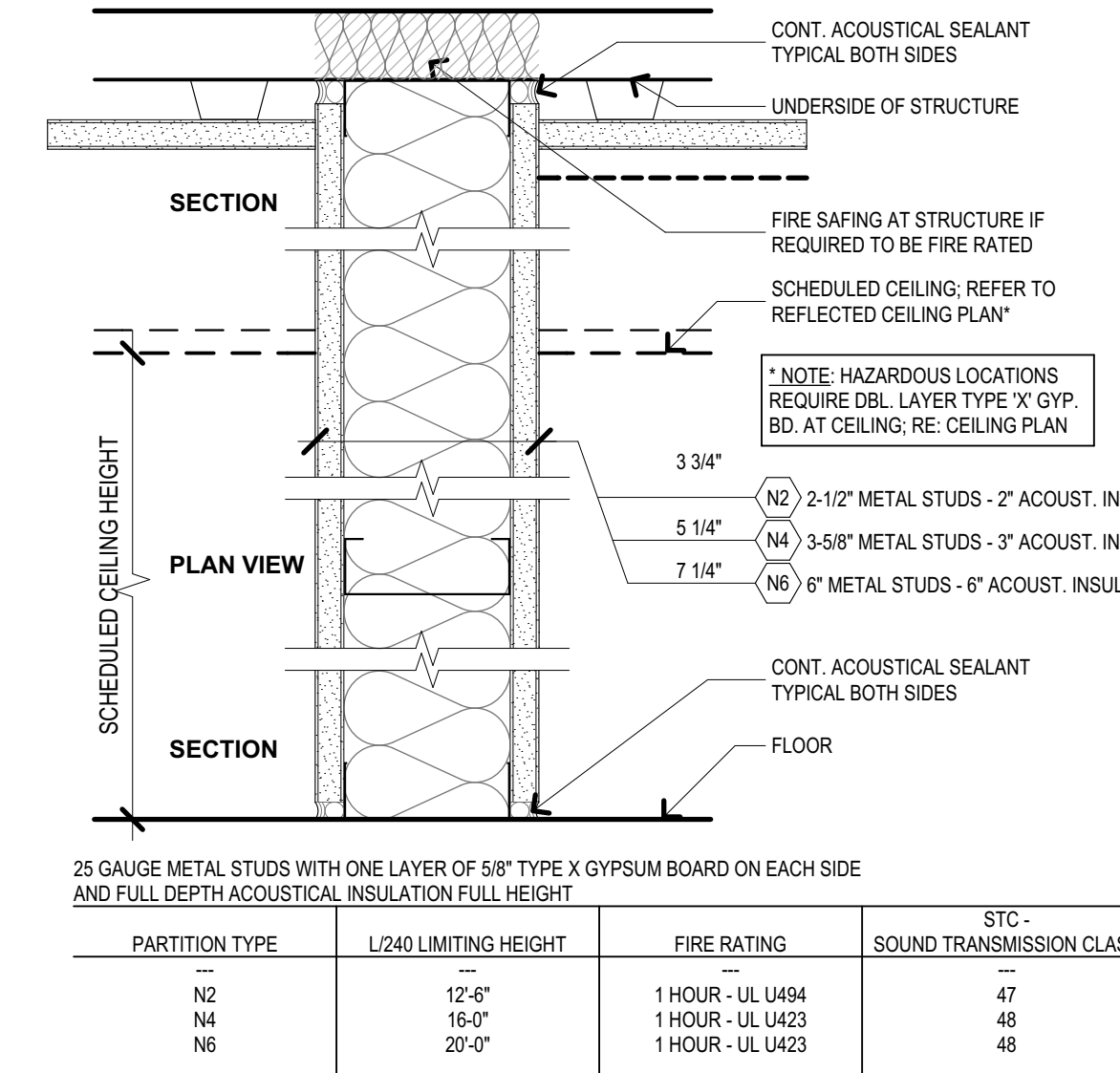
D PARTITION D
SCALE: 3" = 1'-0" 1 HR RATED



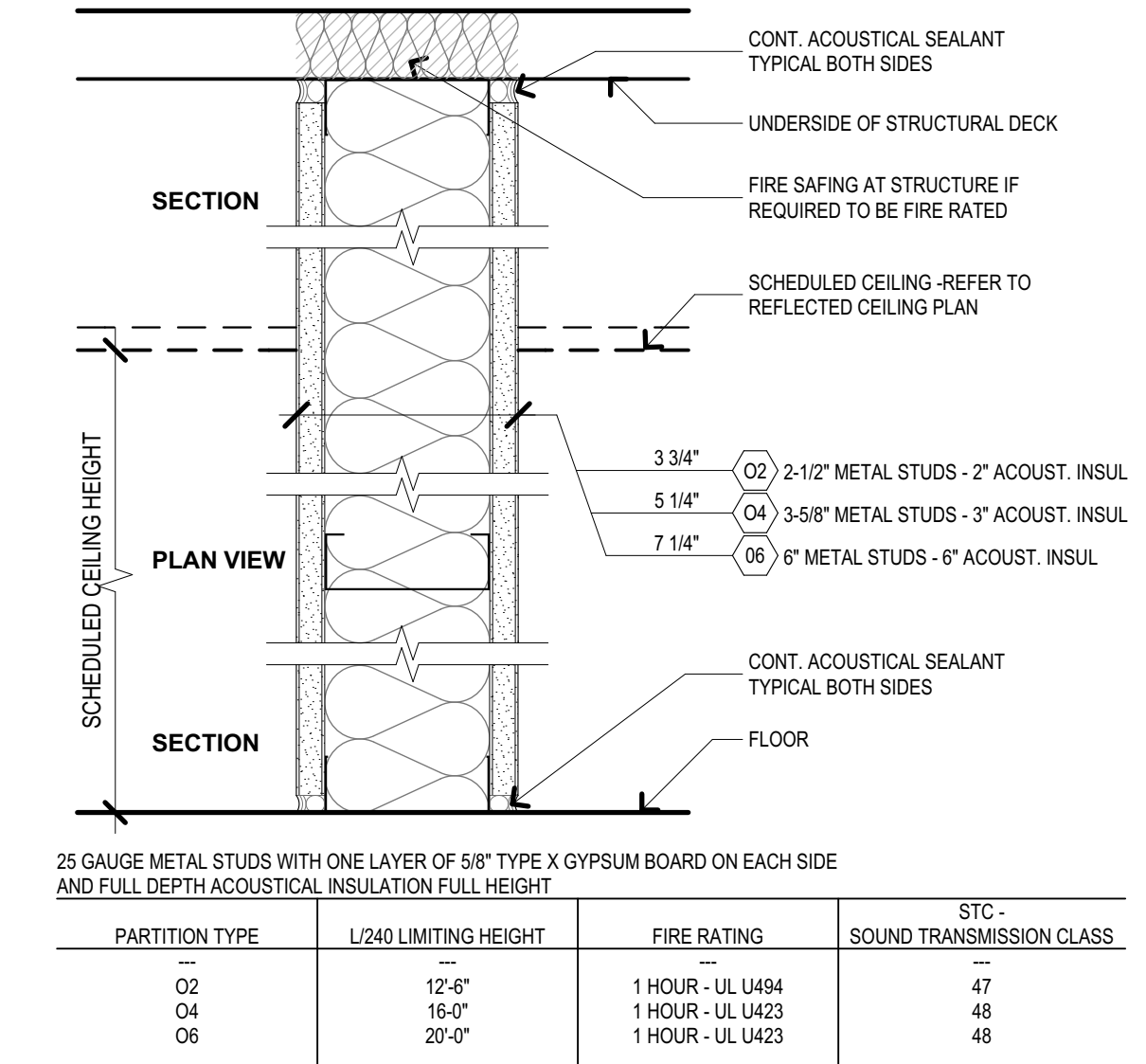
E PARTITION E
SCALE: 3" = 1'-0" 1 HR RATED



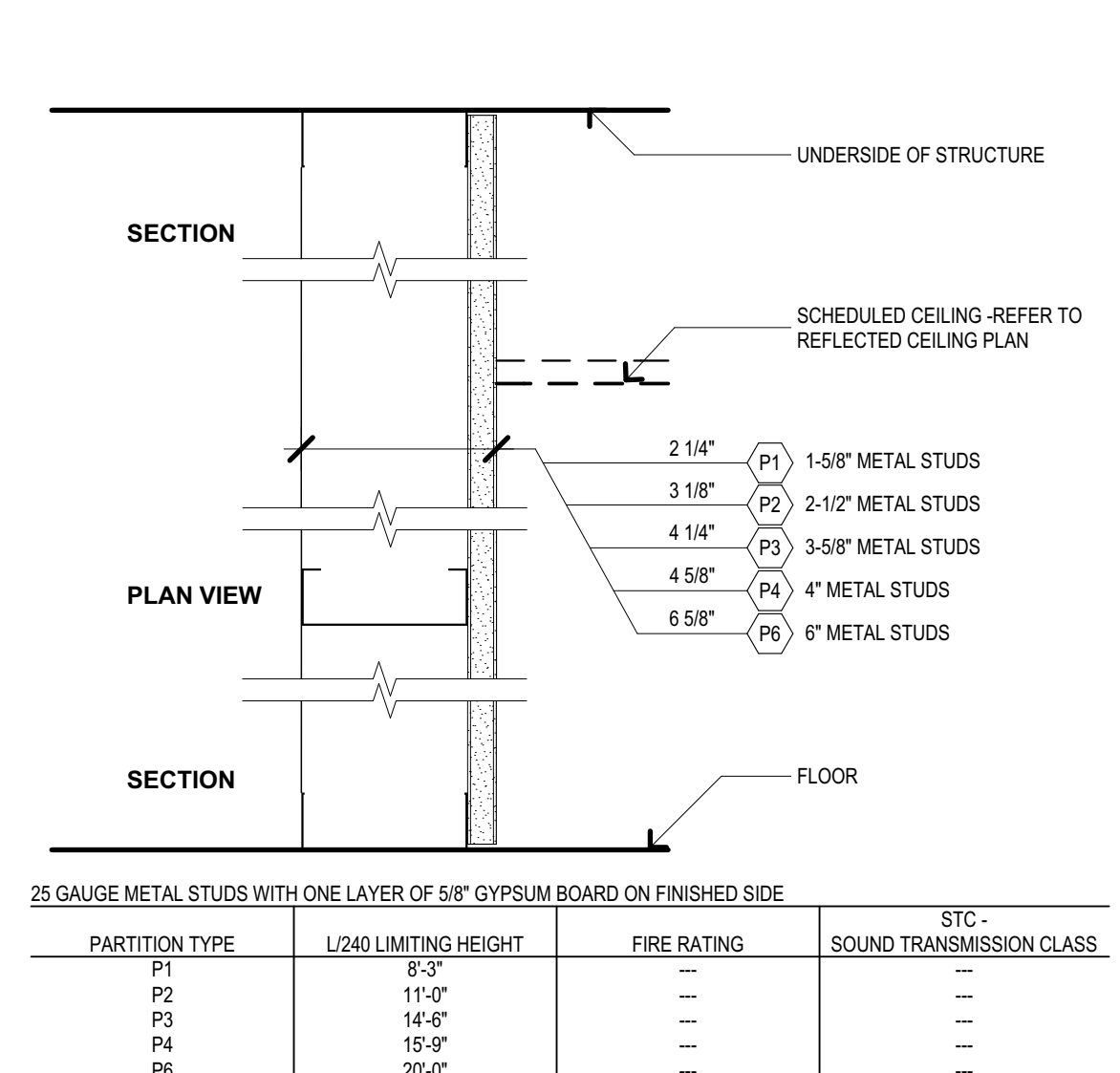
M PARTITION M
SCALE: 3" = 1'-0"



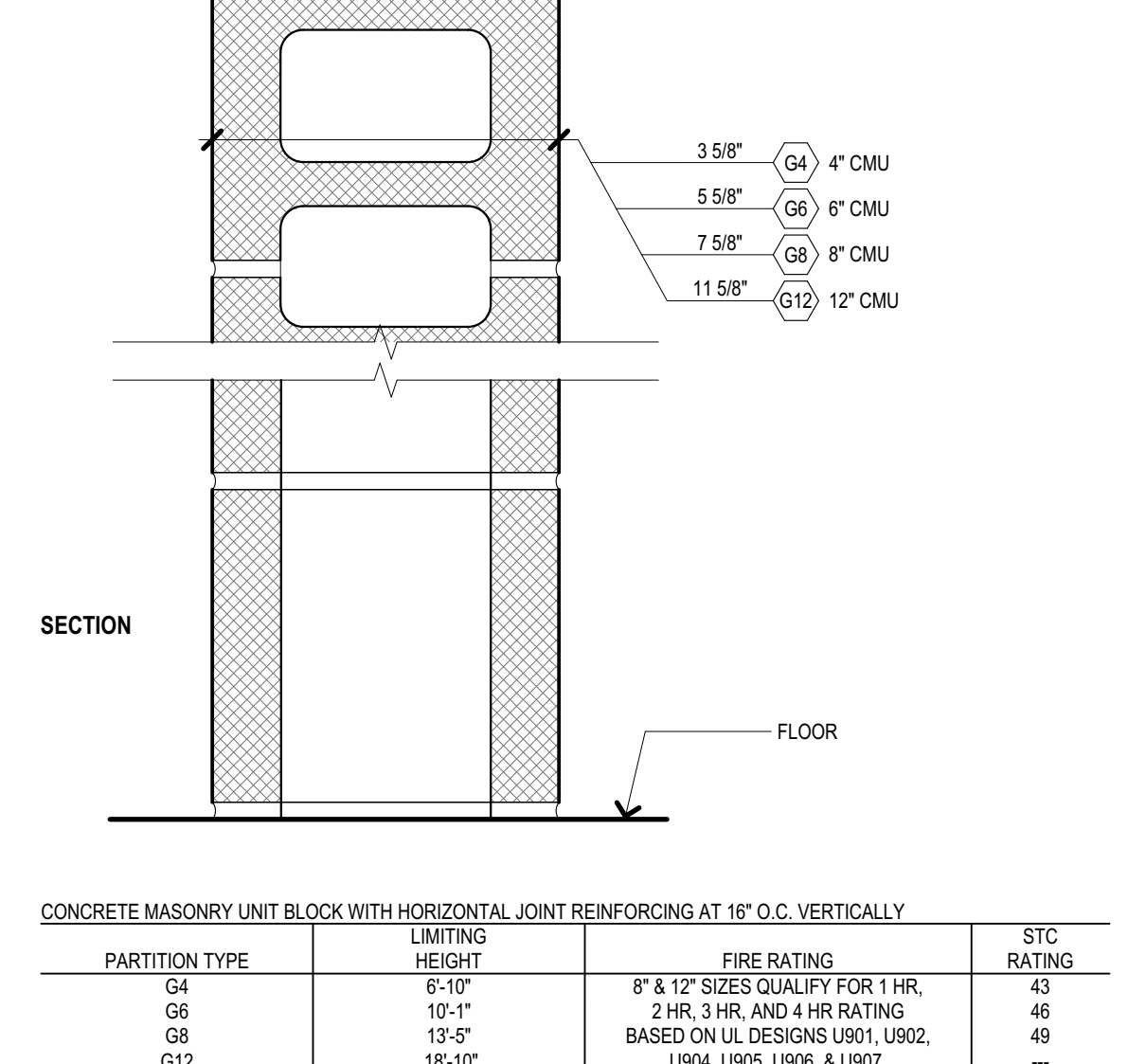
N PARTITION N
SCALE: 3" = 1'-0" 1 HR RATED



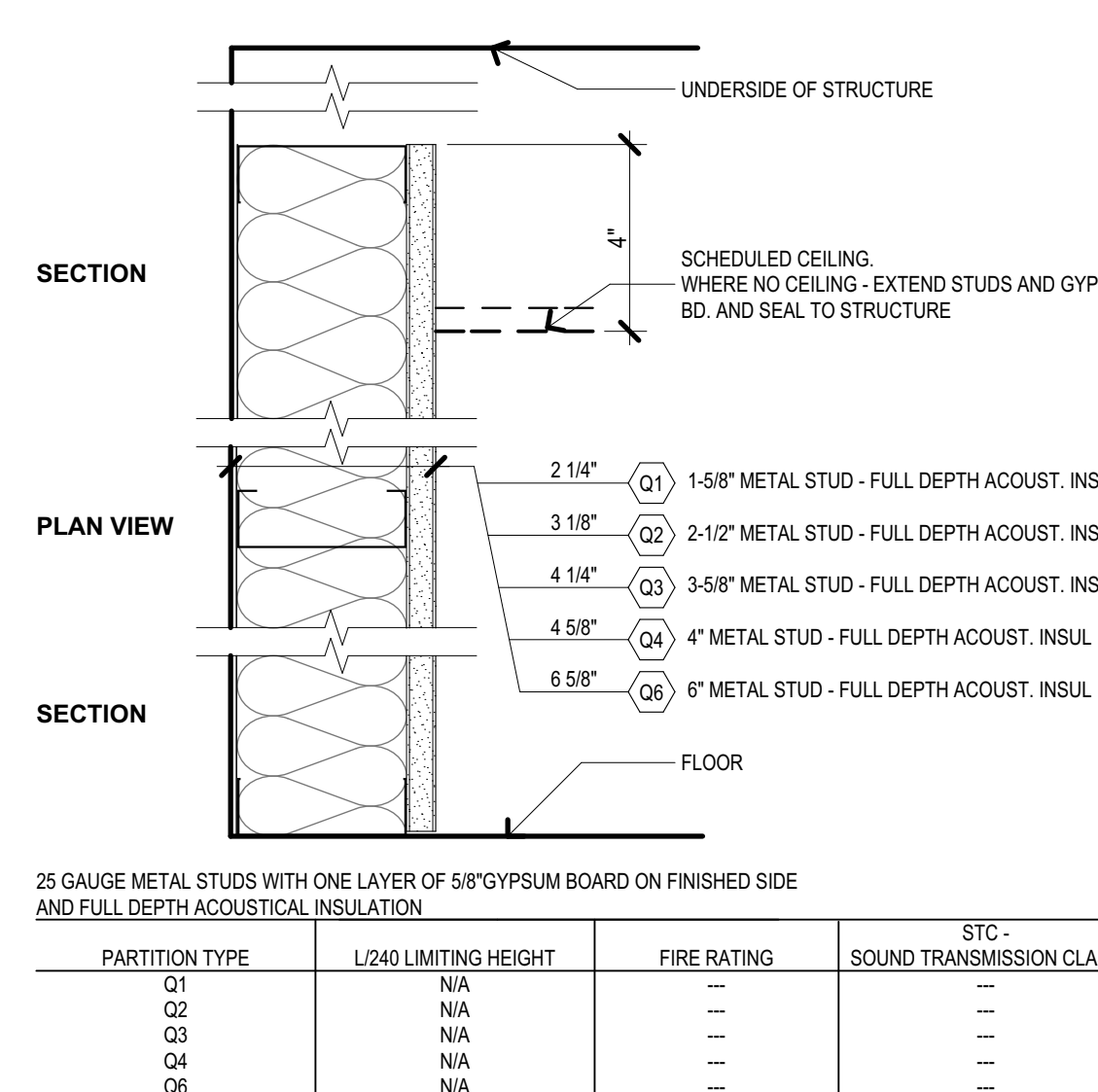
O PARTITION O
SCALE: 3" = 1'-0" 1 HR RATED



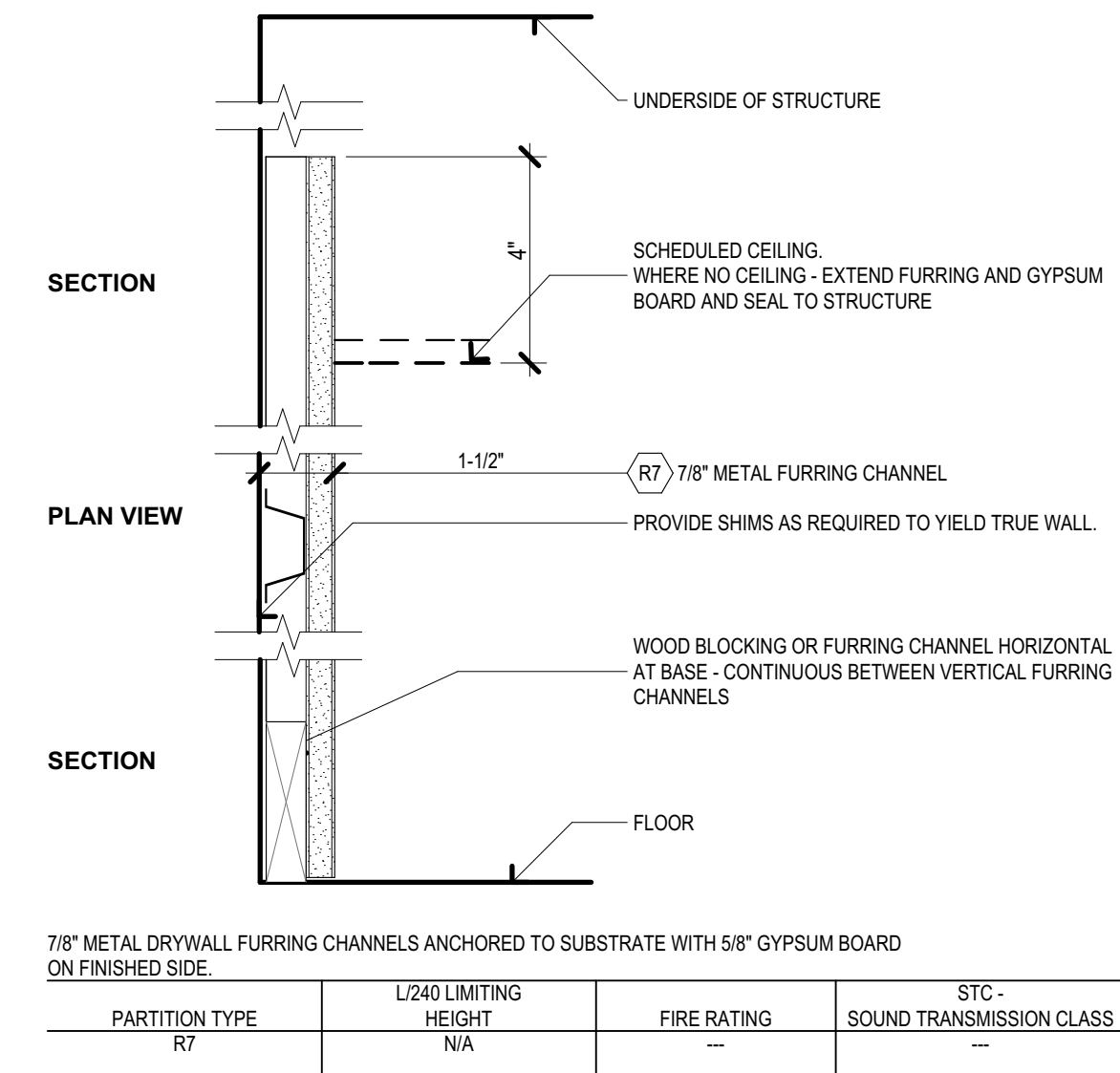
P PARTITION P
SCALE: 3" = 1'-0" 1 HR RATED



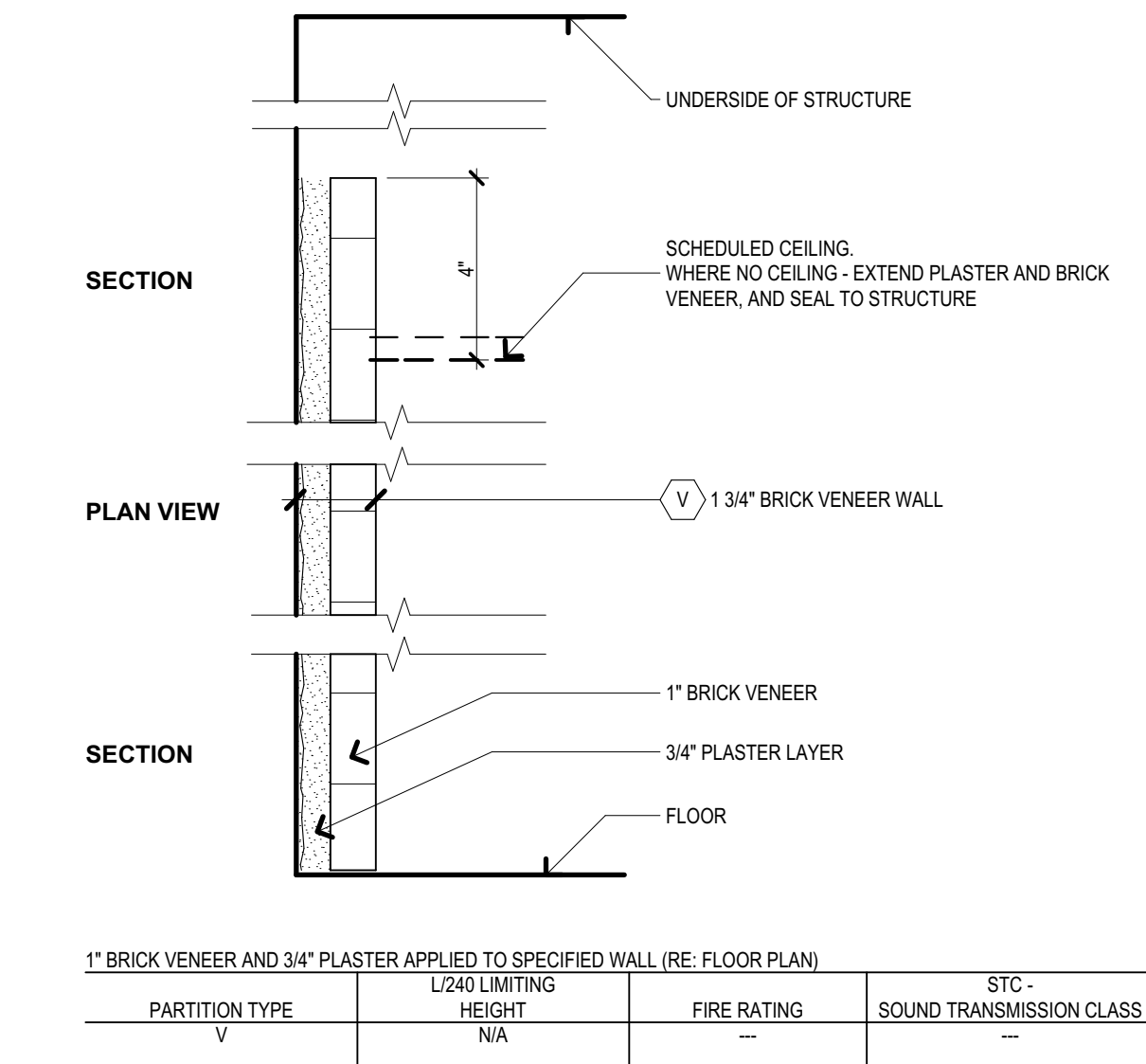
G PARTITION G
SCALE: 3" = 1'-0" 1 HR RATED



Q PARTITION Q
SCALE: 3" = 1'-0" 1 HR RATED



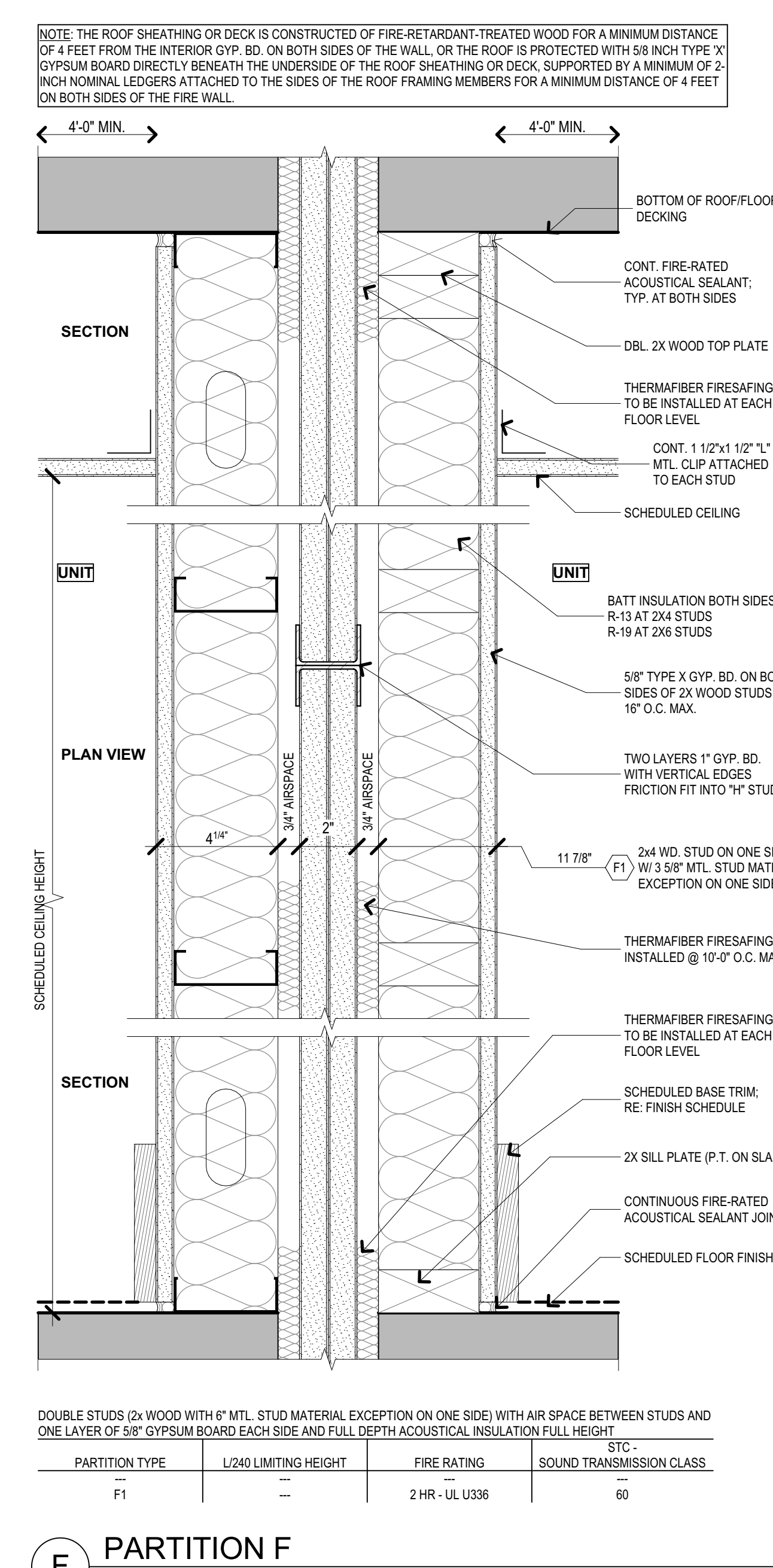
R PARTITION R
SCALE: 3" = 1'-0"



V PARTITION V
SCALE: 3" = 1'-0"

PARTITION TYPE NOTES

- THE PROJECT MANDATORY MAXIMUM ALLOWABLE DEFLECTION DESIGN CRITERIA RATIO IS L/240 USING STUDS @ 16" O.C. WHERE "BRIEFLY FINISHES WILL BE APPLIED SUCH AS PLASTER OR CERAMIC TILE, MAX. ALLOWABLE DEFLECTION CRITERIA RATIO IS L/360.
- THE LIMITING HEIGHTS INDICATED IN EACH PARTITION TYPE ARE THE MAXIMUM UNSUPPORTED HEIGHT FOR THAT PARTITION IF PROJECT CONDITIONS NEED TO EXCEED THIS LIMIT, ITS THE CONTRACTORS OPTION TO PROVIDE HEAVIER GAUGE STUDS, OR LESS SPACE BETWEEN STUDS, OR SUPPLEMENTAL BRACING TO SATISFY THE ALLOWABLE DEFLECTION DESIGN CRITERIA.
- SYMBOL DESCRIPTION
PARTITION TYPE → STUD SIZE NO. OR PARTITION TYPE → STUD SIZE NO. FIRE RATED HOURS
- ALL PARTITION TYPES SHOWN MAY NOT NEED TO BE FIRE RATED ASSEMBLIES. REFER TO PARTITION SYMBOL AND THE LIFE SAFETY PLAN FOR PARTITIONS WHICH MUST BE FIRE RATED.
- WHEN EVER A FIRE RATED PARTITION IS INDICATED ALL ELEMENTS OF THE COMPLETE ASSEMBLY MUST BE CONSTRUCTED IN STRICT COMPLIANCE WITH THE UNDERWRITERS LABORATORY AND OTHER TESTING AGENCY REQUIREMENTS.
- PROVIDE "WATER RESISTANT" GYPSUM BOARD AS THE SUBSTRATE FOR CERAMIC TILE, OR BACKER BOARD SUBSTRATE FOR CERAMIC TILE IN WET CONDITIONS, IF THE BACKER BOARD IS BEING SUBSTITUTED FOR ONE OF THE GYPSUM BOARD LAYERS IT MUST HAVE APPROVED FIRE RATING CERTIFICATION.
- THE STC RATINGS LISTED ARE TO SERVE AS A GENERAL INDICATOR FOR THE ACOUSTICAL PERFORMANCE OF THAT PARTITION HOWEVER, SPECIFIC PROJECT CONDITIONS MAY NOT NECESSARILY YIELD THE LABORATORY TESTED RESULTS.
- ALL PARTITION TYPES INDICATED ON THIS DRAWING MAY NOT NECESSARILY BE USED ON THIS SPECIFIC PHASE OF THE PROJECT.
- IBC 2012 SECTION 708.6.4 - IN BUILDINGS OF TYPE III, IV, AND V CONSTRUCTION, WALLS SHALL BE PERMITTED TO TERMINATE AT THE UNDERSIDE OF COMBUSTIBLE ROOF SHEATHING OR DECKING PROVIDED:
4.1 THERE ARE NO OPENINGS IN THE ROOF WITHIN 4 FEET OF THE FIRE WALL.
4.2 THE ROOF IS COVERED WITH A MINIMUM CLASS B ROOF COVERING, AND
4.3 THE ROOF SHEATHING OR DECK IS CONSTRUCTED OF FIRE-RETARDANT TREATED WOOD FOR A DISTANCE OF 4 FEET ON BOTH SIDES OF THE WALL OR THE ROOF IS PROTECTED WITH 5/8 INCH TYPE X GYPSUM BOARD DIRECTLY BENEATH THE UNDERSIDE OF THE ROOF SHEATHING OR DECK, SUPPORTED BY A MINIMUM OF 2- INCH NOMINAL LEDGERS ATTACHED TO THE SIDES OF THE ROOF FRAMING MEMBERS FOR A MINIMUM DISTANCE OF 4 FEET ON BOTH SIDES OF THE FIRE WALL.



F PARTITION F
SCALE: 3" = 1'-0"

pi architects
3500 Jefferson St, Suite 303
Austin, TX 78731
P: (512) 231-1910
F: (512) 231-1950
www.piarch.com

architecture + master planning
interiors + landscape architecture

REGISTERED ARCHITECT
03/31/2016

WATERSTONE AT BATON ROUGE
ASSISTED LIVING & MEMORY CARE

SIEGEN LANE
BATON ROUGE, LA 70810

ISSUE: PERMIT SET

©2016 PI ARCHITECTS, INC.

REVISIONS:

DATE: 03/31/2016
PROJECT NUMBER: 14017
SHEET TITLE: PARTITIONS TYPES
SHEET: G4.2