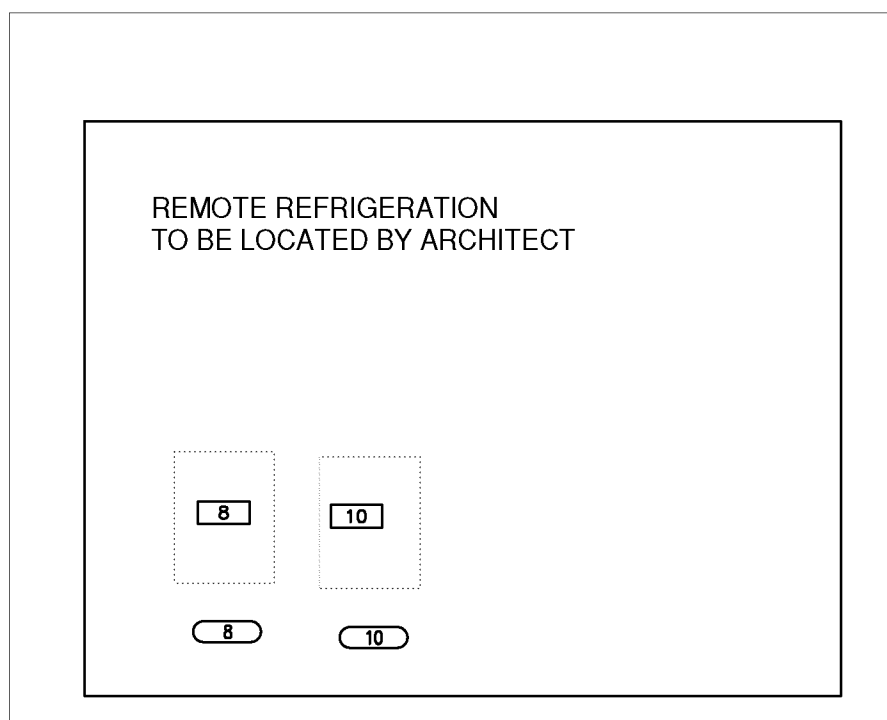
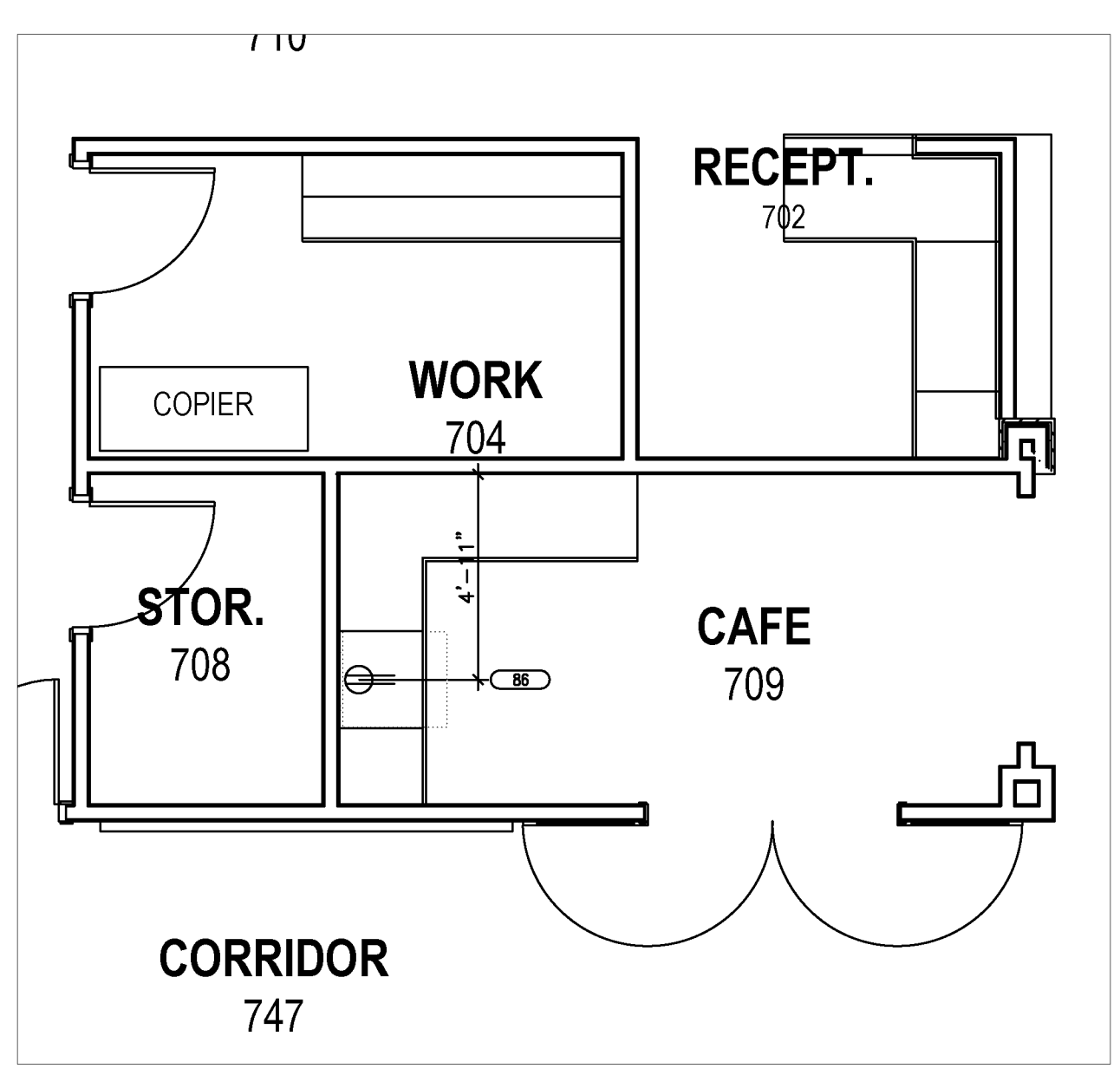


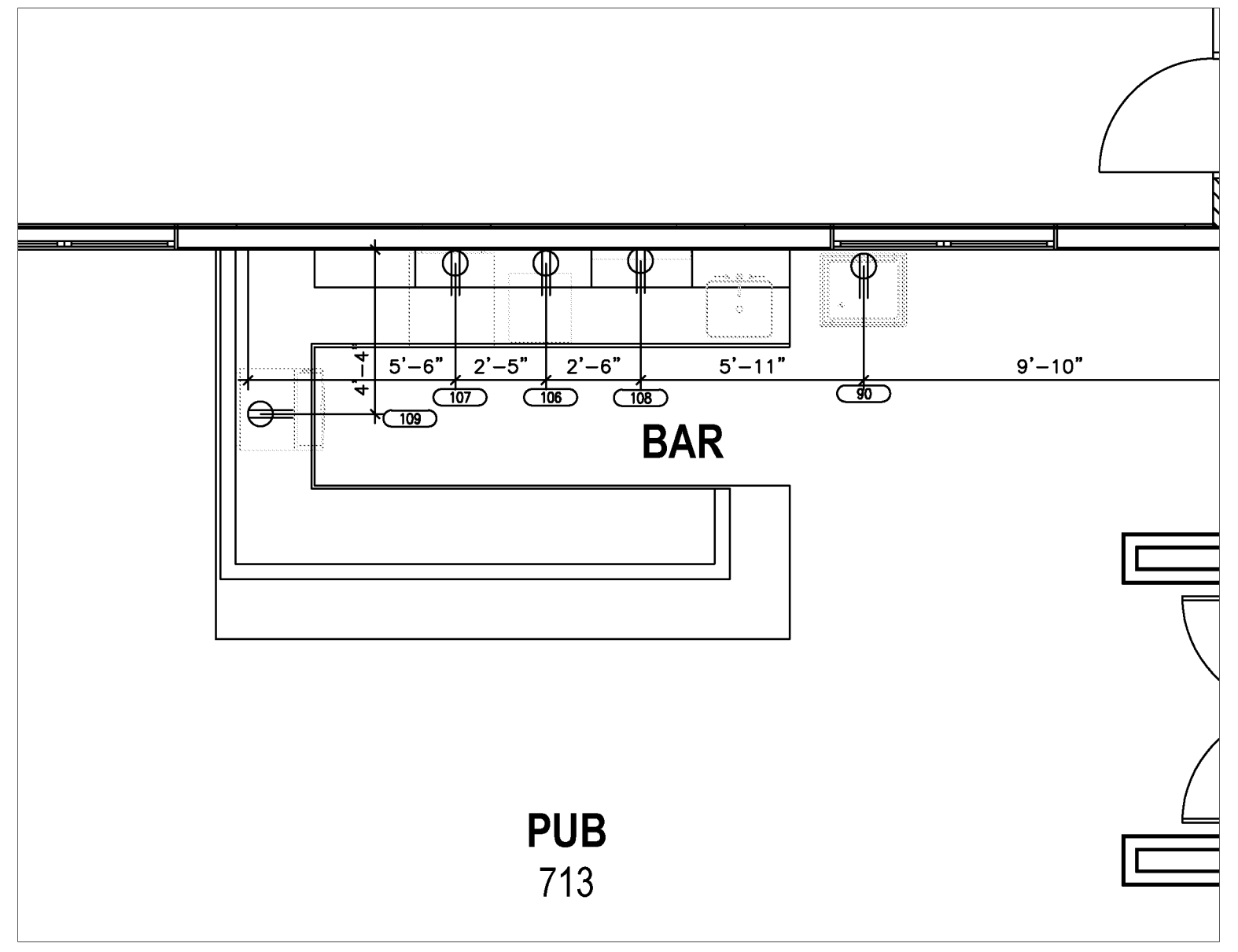
MAIN KITCHEN, ACTIVITIES KITCHENS, COUNTRY STORE



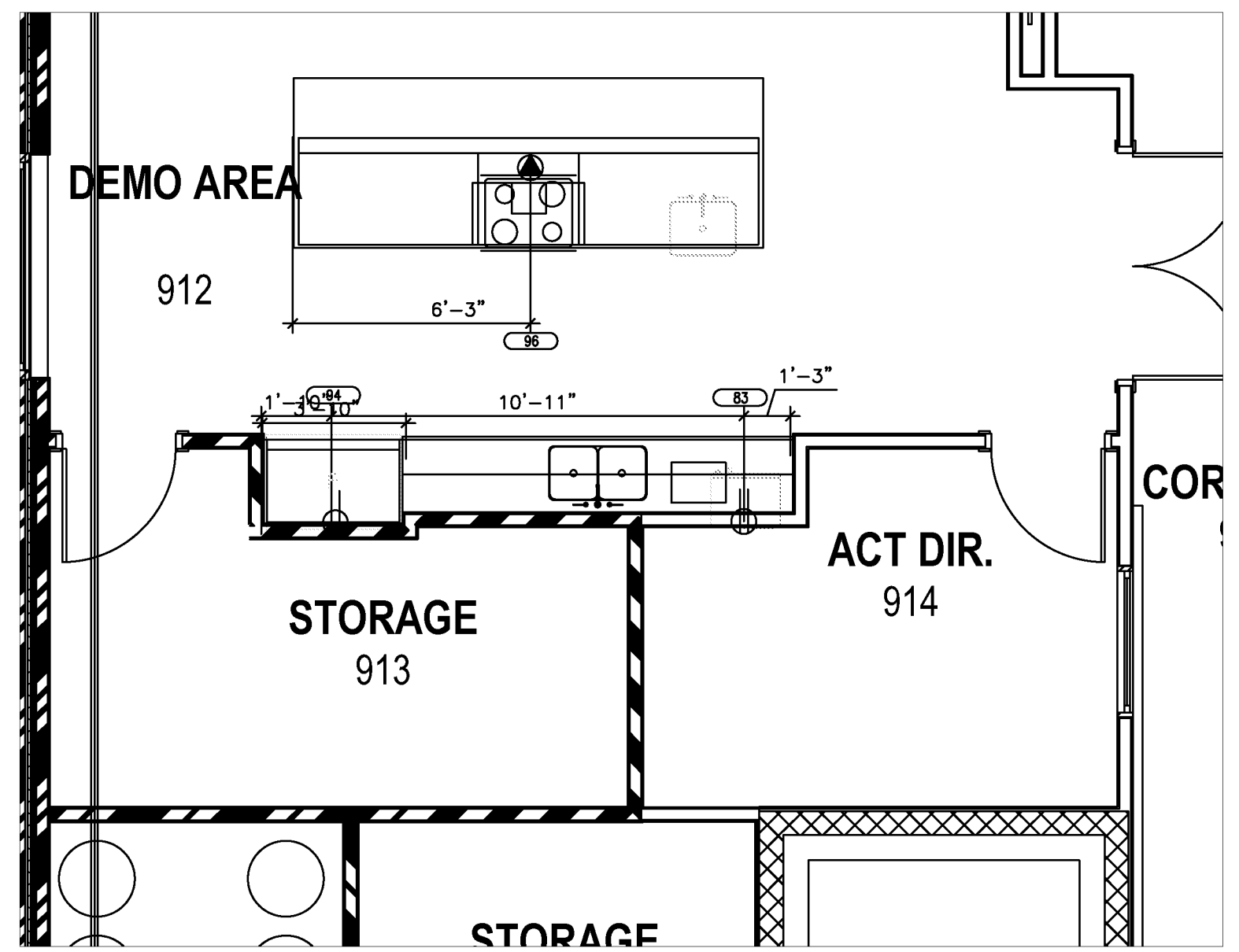
REMOTE REFRIGERATION



CAFE



PUB



DEMO AREA (2ND FLOOR)

NOTES TO ELECTRICAL CONTRACTOR:

- 1) Electrical contractor must check equipment so that the service requirements are correctly typed, adequately sized, and roughed-in properly so as to minimize the amount of materials and fittings needed for final hook-up resulting in a neat and orderly installation.
- 2) All services shown with symbols centered on face of wall should be brought to that point concealed in wall and stubbed out of wall centered at height shown. Do not stub out of floor and run exposed up face of wall without previous approval.
- 3) All services shown with symbols away from any wall or column should be stubbed out of floor to a maximum overall height as shown or dropped from ceiling as directed.
- 4) All labor, switches, disconnects, and fittings required for final connection of equipment as necessary to comply with all codes, including all interconnections to be furnished by electrical contractor unless stated otherwise in F.S.C. general spaces.
- 5) The Wasserstrom Company will be responsible for critical dimensions, plumbing, and electrical specifications for equipment supplied by our company. All other mechanicals, locations, and specifications shown on the drawing for the convenience of the customer, but not supplied by The Wasserstrom Company should be checked and verified by the architect, owner and/or contractor. The electrical contractor shall apply for all necessary permits and shall solicit inspections and approvals as required.
- 6) While every attempt has been made in the preparation of this plan to avoid mistakes, the Designer and Company cannot guarantee against error or unforeseen field conditions. The contractor or builder must check all dimensions, details and report any discrepancies prior to proceeding with work knowingly aware of code violations, incompatibility or errors.
- 7) \*This drawing is for placement of equipment and/or type and location of mechanical connections only.\*
- 8) Please follow all local Board of Health, plumbing and electric codes when installing all kitchen equipment.

ELECTRICAL CONNECTION LEGEND

	DUPLIX RECEPT., 20-AMP, 120-VOLT, GROUND TYPE, HORIZONTAL MOUNT
	SIMPLEX RECEPT., 20-AMP, 120-VOLT, GROUND TYPE, HORIZONTAL MOUNT
	SPECIAL PURPOSE OUTLET, 120-VOLT, GROUND TYPE, HORIZONTAL MOUNT
	SPECIAL PURPOSE OUTLET, 208/240-VOLT AS INDICATED, GROUND TYPE, HORIZONTAL MOUNT
	JUNCTION BOX
	ELECTRICAL CONDUIT, STUB AS INDICATED FOR DIRECT CONNECTION
	FLOOR/CEILING RECEPTACLE AS INDICATED
	FIELD WIRING, EXPOSED RIGID WATERTIGHT CONDUIT
	FIELD WIRING, CONCEALED IN WALL, FLOOR, OR CEILING
	DROP FROM CEILING
	STUB UP FROM FLOOR