

BIM Server: Server2012 - BIM Server (18/01/4017 Concordia Baton Rouge) [Ver: 18.0011 Wednesday, September 02, 2015] 4:04 PM

E

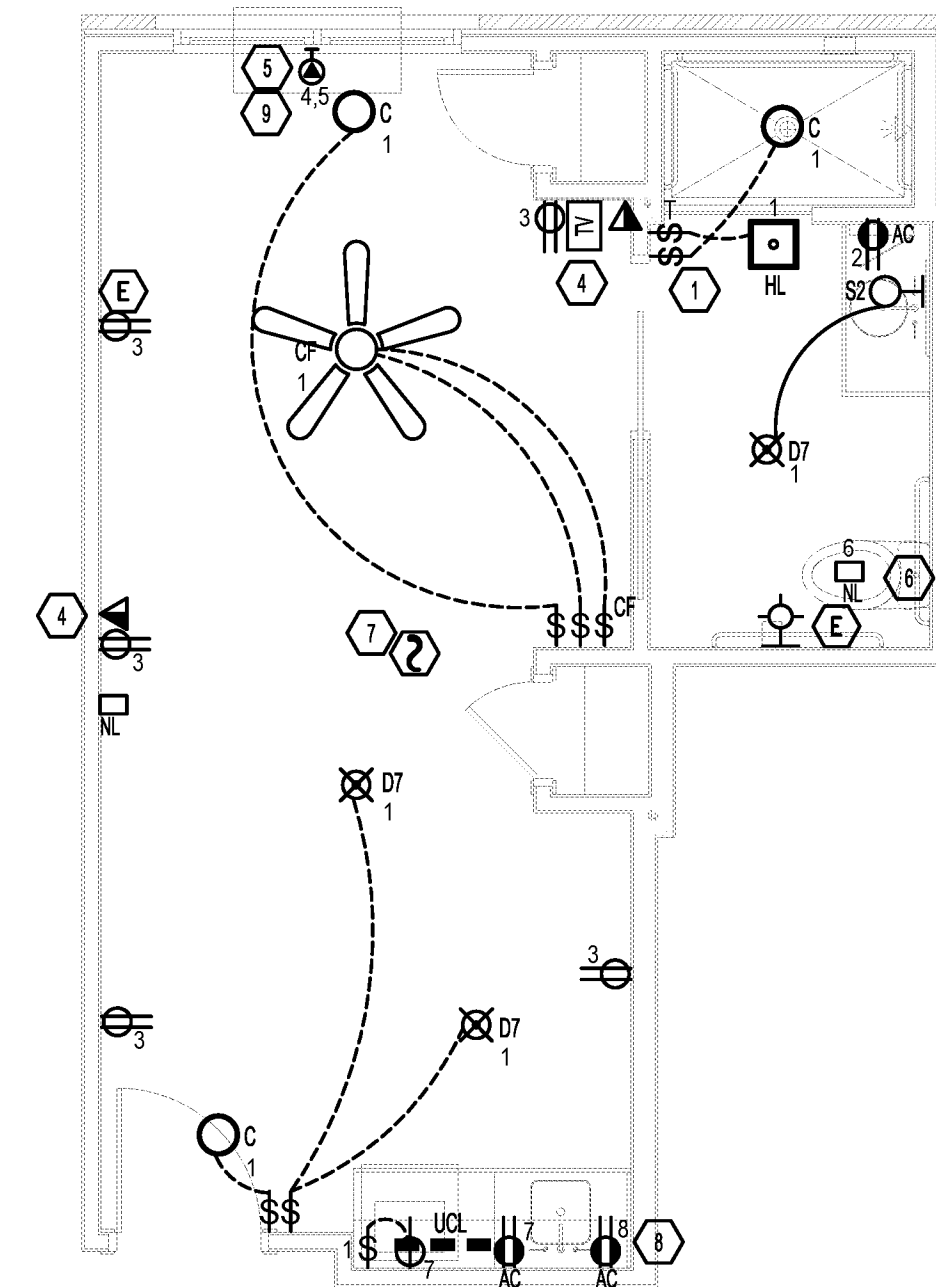
D

C

B

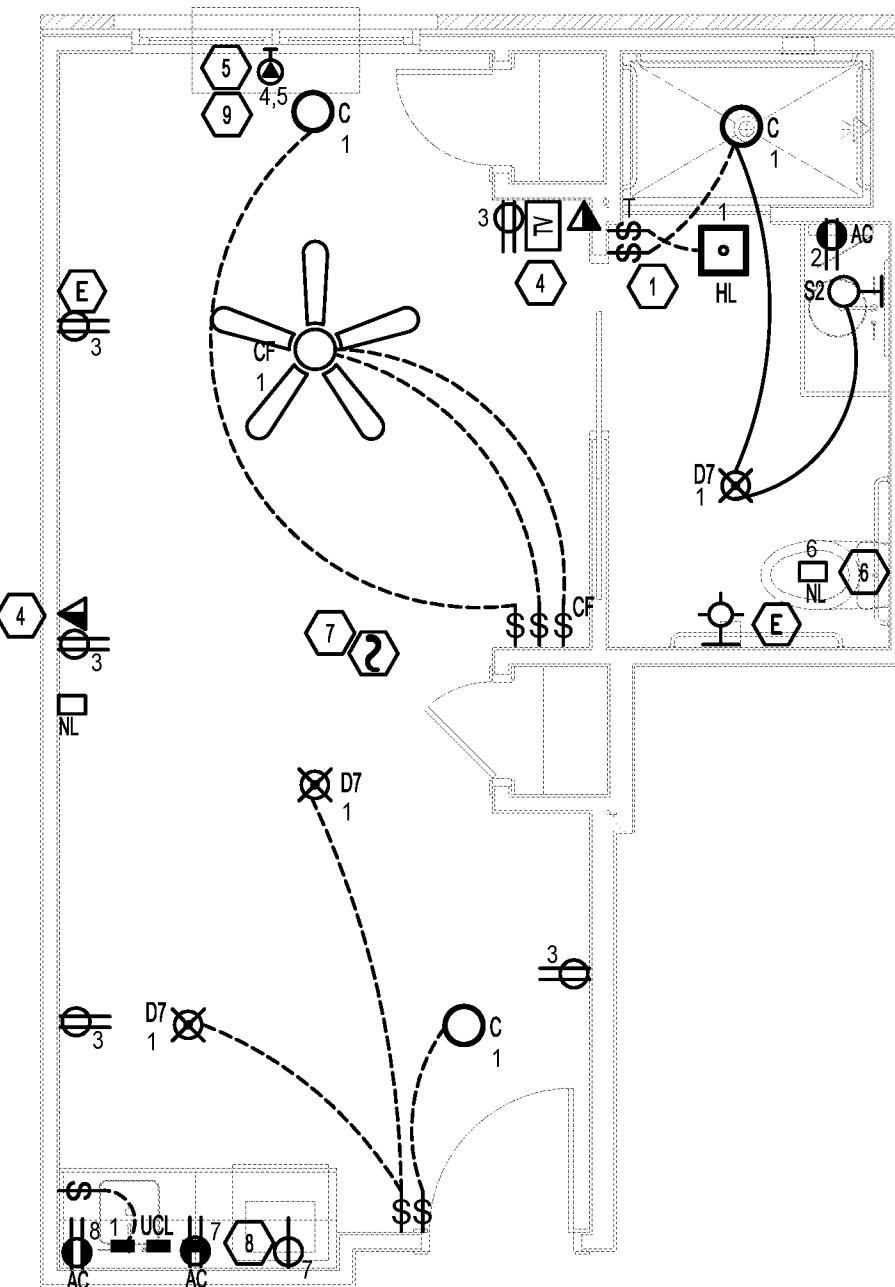
A

MC STUDIO A1.1 371 S.I. - I.T.
C: T1 LIGHTING
C: T2 BATH REC 180
C: T3 REC 1080
C: T4.5 9A MCA, 15A MOCP HVAC
C: T6 NIGHT LIGHT 15
C: T7 UTURE U.C. RIDGE
C: T8 UTURE MICRO AVE



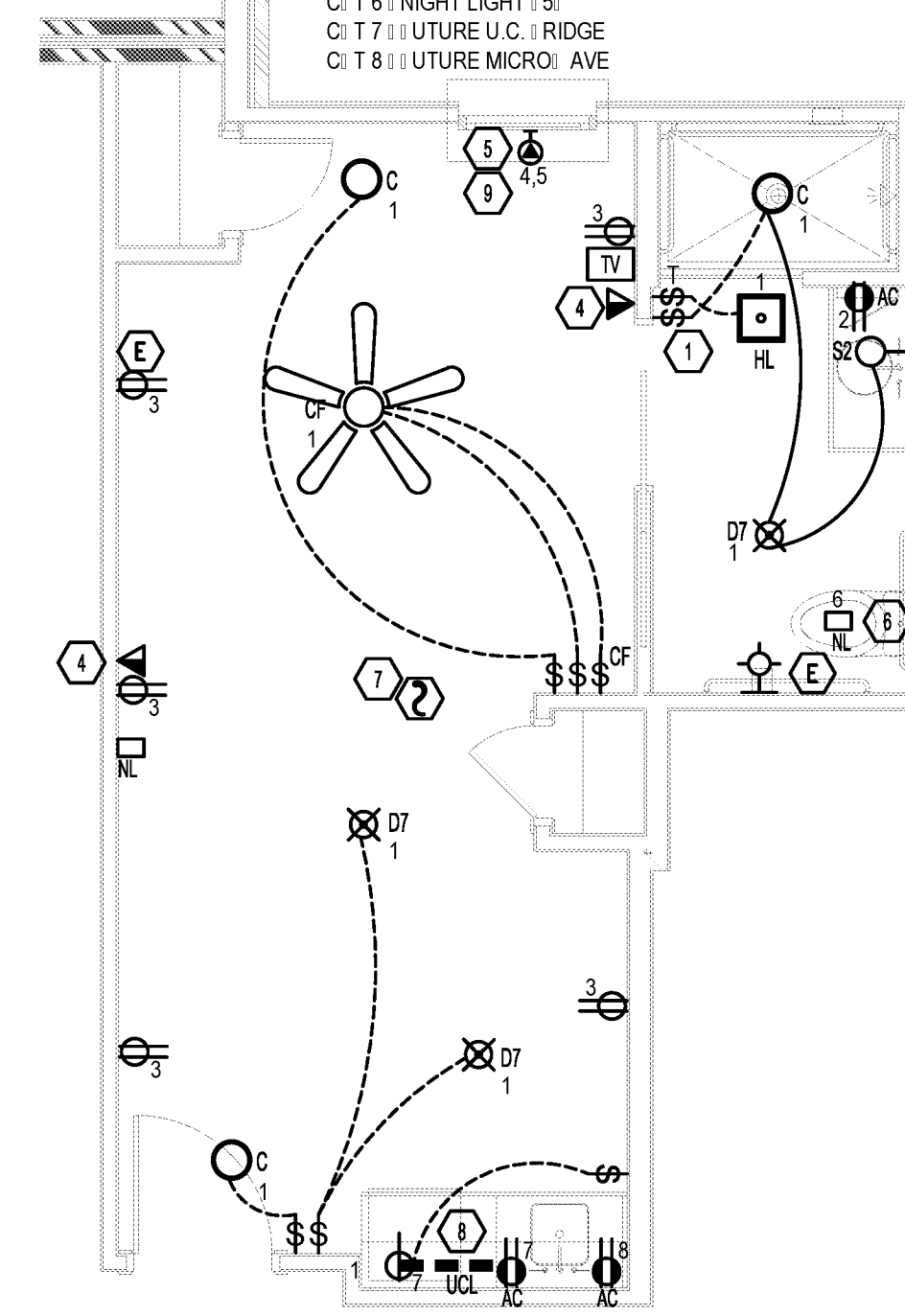
1 | MC STUDIO UNIT A1.1
E4.2 | 1/4" = 1'-0"

MC STUDIO A1.2 371 S.I. - I.T.
C: T1 LIGHTING
C: T2 BATH REC 180
C: T3 REC 1080
C: T4.5 9A MCA, 15A MOCP HVAC
C: T6 NIGHT LIGHT 15
C: T7 UTURE U.C. RIDGE
C: T8 UTURE MICRO AVE



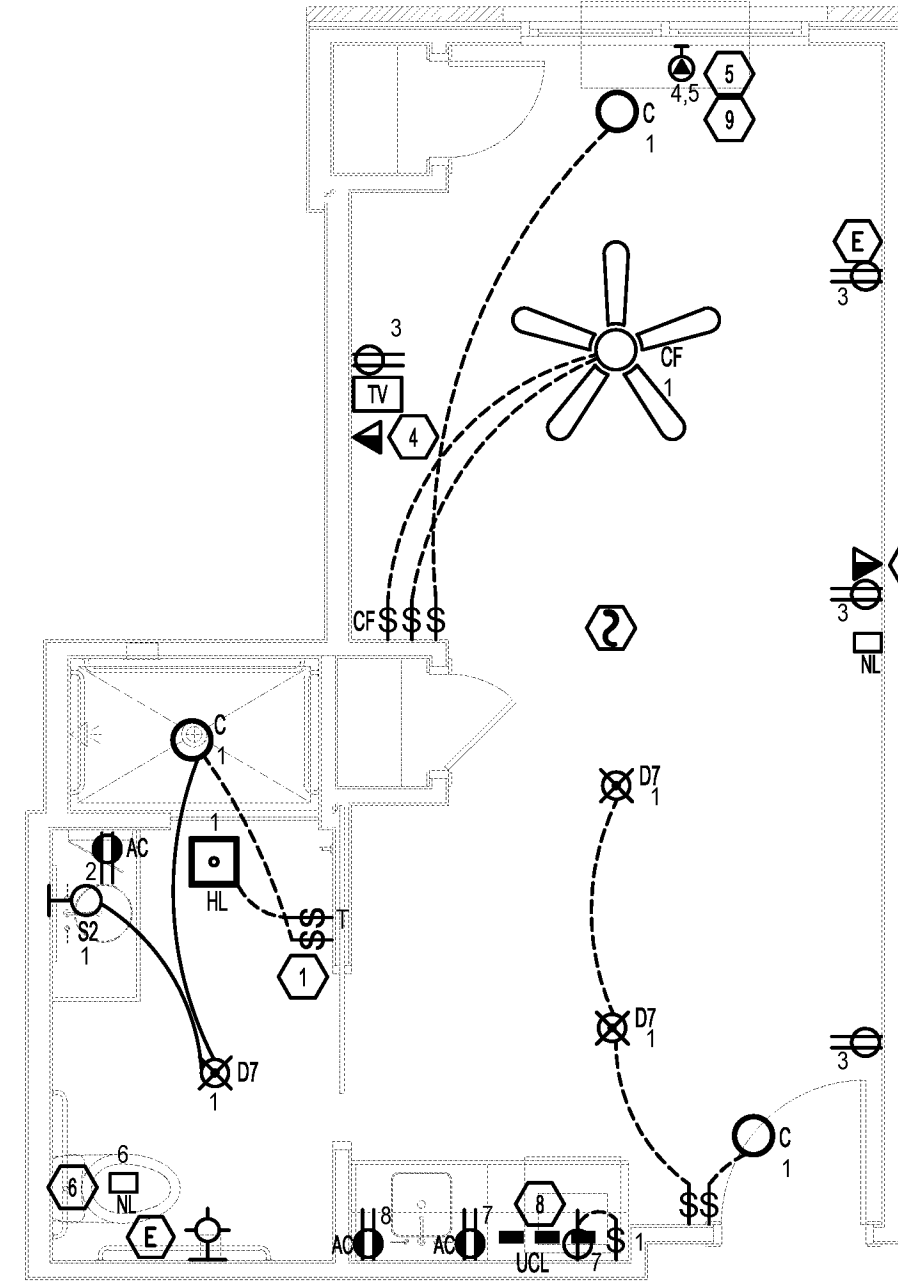
1 | MC STUDIO UNIT A1.2
E4.2 | 1/4" = 1'-0"

MC STUDIO A1.3 371 S.I. - I.T.
C: T1 LIGHTING
C: T2 BATH REC 180
C: T3 REC 1080
C: T4.5 9A MCA, 15A MOCP HVAC
C: T6 NIGHT LIGHT 15
C: T7 UTURE U.C. RIDGE
C: T8 UTURE MICRO AVE



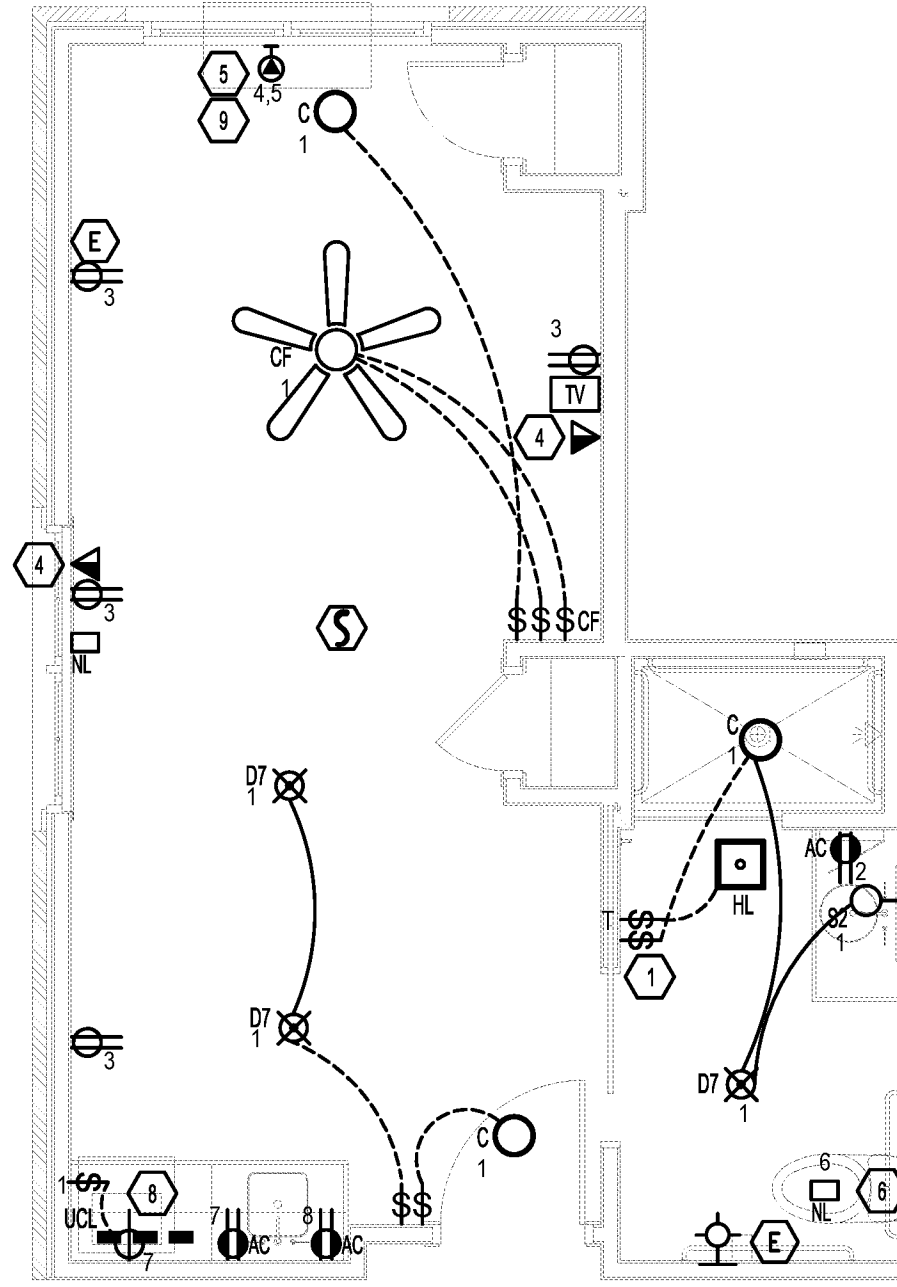
1 | MC STUDIO UNIT A1.3
E4.2 | 1/4" = 1'-0"

MC STUDIO A2.1 374 S.I. - I.T.
C: T1 LIGHTING
C: T2 BATH REC 180
C: T3 REC 1080
C: T4.5 9A MCA, 15A MOCP HVAC
C: T6 NIGHT LIGHT 15
C: T7 UTURE U.C. RIDGE
C: T8 UTURE MICRO AVE



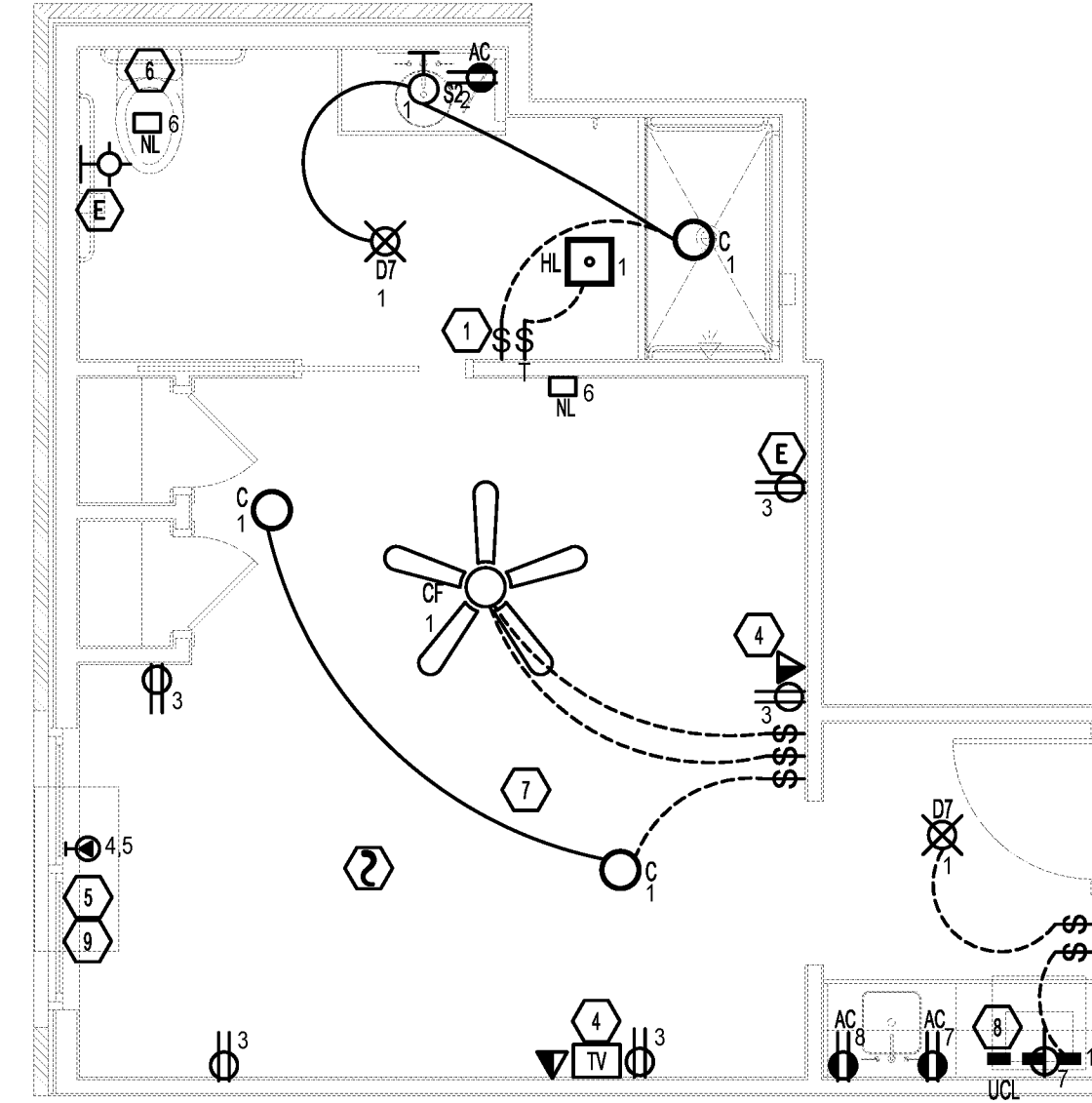
1 | MC STUDIO UNIT A2.1
E4.2 | 1/4" = 1'-0"

MC STUDIO A2.2 374 S.I. - I.T.
C: T1 LIGHTING
C: T2 BATH REC 180
C: T3 REC 1080
C: T4.5 9A MCA, 15A MOCP HVAC
C: T6 NIGHT LIGHT 15
C: T7 UTURE U.C. RIDGE
C: T8 UTURE MICRO AVE



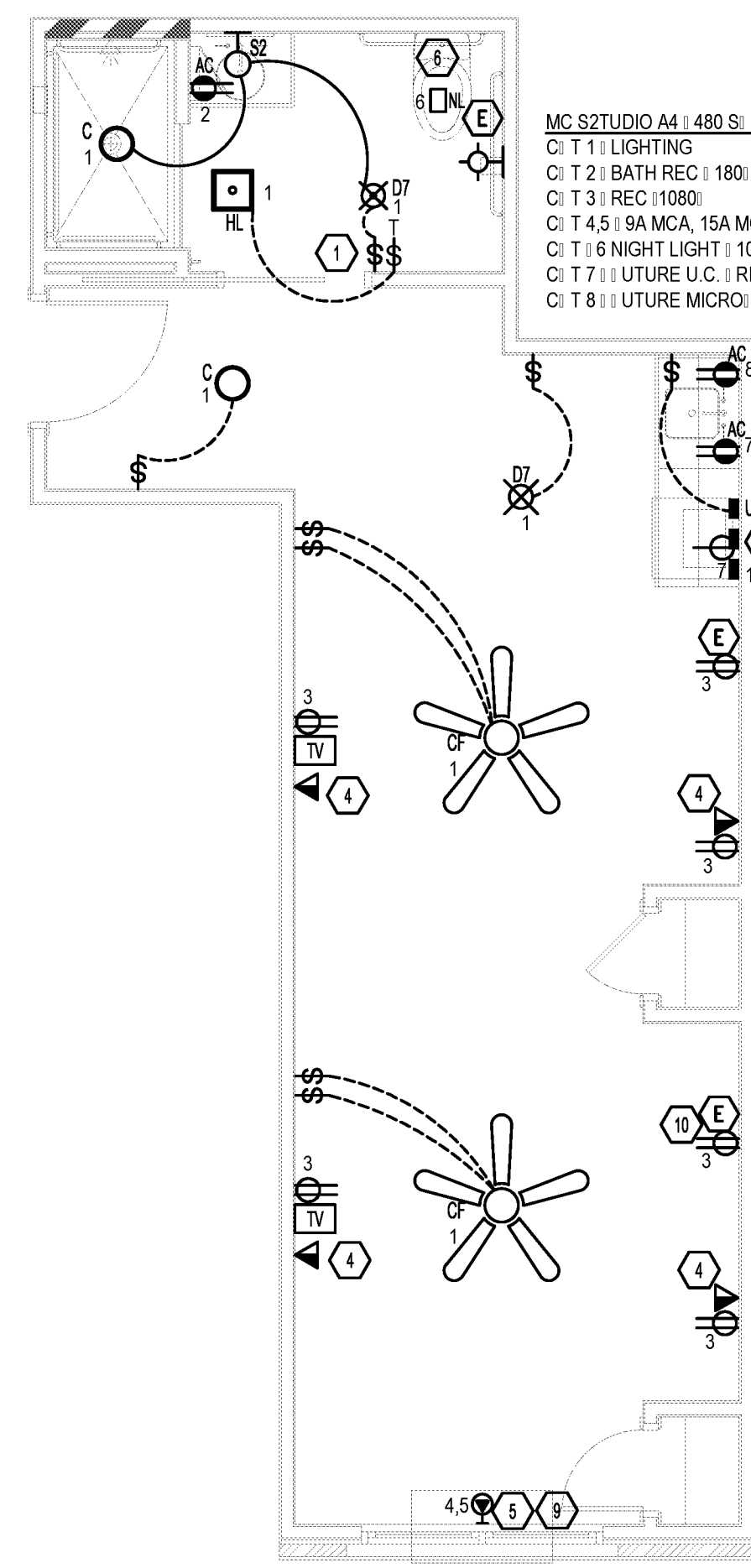
1 | MC STUDIO UNIT A2.2
E4.2 | 1/4" = 1'-0"

MC STUDIO A3 388 S.I. - I.T.
C: T1 LIGHTING
C: T2 BATH REC 180
C: T3 REC 1080
C: T4.5 9A MCA, 15A MOCP HVAC
C: T6 NIGHT LIGHT 10
C: T7 UTURE U.C. RIDGE
C: T8 UTURE MICRO AVE



1 | MC STUDIO UNIT A3
E4.2 | 1/4" = 1'-0"

MC STUDIO A4 480 S.I. - I.T.
C: T1 LIGHTING
C: T2 BATH REC 180
C: T3 REC 1080
C: T4.5 9A MCA, 15A MOCP HVAC
C: T6 NIGHT LIGHT 10
C: T7 UTURE U.C. RIDGE
C: T8 UTURE MICRO AVE



1 | MC STUDIO UNIT A4
E4.2 | 1/4" = 1'-0"

GENERAL NOTES:

- A. ALL ELECTRICAL WORK SHALL MEET OR EXCEED THE MOST CURRENT EDITION OF THE NATIONAL ELECTRICAL CODE, STATE CODES AND LOCAL CODES.
B. WHEN CONDITIONS OCCUR BETWEEN THE PLANS AND OR SPECIFICATIONS WITH ANY LOCAL CODES, THE MOST STRINGENT REQUIREMENTS APPLY.
C. SEE MAIN ELECTRICAL GENERAL NOTES, SYMBOL LEGEND, LUMINAIRE SCHEDULE, LINE TYPE LEGEND, AND ELECTRICAL NOTATIONS ON THE ELECTRICAL COVER SHEET OR MORE INFORMATION.
D. VERIFY ELECTRICAL LOCATIONS AND MOUNTING HEIGHTS OR ALL DIMENSIONS AND DEVICES PRIOR TO ROUGH-IN.
E. ELECTRICAL CONTRACTOR SHALL COORDINATE THE COLOR OF ALL SWITCHES, RECEPTACLES, ETC. AND COVER PLATES WITH THE ARCHITECT, OTHER COMMUNICATIONS CONTRACTOR, AND INTERIOR DESIGNER.
F. COORDINATE ALL ELECTRICAL WITH OTHER TRADES PRIOR TO ROUGH-IN.
G. IN ALL AREAS SPECIFIED IN NEC 210.52, ALL 15 AND 20 AMP, 120 VOLT RECEPTACLES SHALL BE LISTED TAMPER-RESISTANT RECEPTACLES.
H. ELECTRICAL CONTRACTOR SHALL PROVIDE SPECIFICATIONS FOR SWITCHES OR ALL HVAC AND PLUMBING EQUIPMENT IN ACCORDANCE WITH THE NATIONAL ELECTRICAL CODE.
I. DEVICES INSTALLED IN FIRE SEPARATION, ALL CEILING SHALL BE INSTALLED IN ACCORDANCE WITH THE LISTING AND LABELING OF THE RATED ASSEMBLY, DO NOT INSTALL OUTLET BOXES WITHIN THE SAME STUD SPACE.
J. LIGHT FIXTURES INSTALLED IN CLOSETS SHALL CONFORM TO NEC ARTICLE 410.16.
K. ALL PRODUCTS USED IN FIRESTOP SYSTEMS SHALL BE RATED FOR COMMERCIAL CONSTRUCTION.
L. UNLESS NOTED OTHERWISE ALL RECEPTACLES SHALL BE MOUNTED 18" A.F.
M. ALL LIGHT FIXTURES MARKED "AC" SHALL BE MOUNTED 42" A.F. UNLESS SPECIFICALLY NOTED OTHERWISE.
N. PROVIDE CAT/VISUAL ALARMS (DATA) BATTERY 18" A.F., ROUGH-IN ONLY, UNLESS NOTED OTHERWISE.
O. CABLE TV (COAXIAL) CABLE IN EACH UNIT SHALL BE INSTALLED BY THE ELECTRICAL CONTRACTOR. CABLE SERVICE CONDUCTORS SHALL BE PROVIDED BY THE UTILITY COMPANY.
P. TELEPHONE WIRING (CAT 5e) IN EACH UNIT SHALL BE INSTALLED BY THE ELECTRICAL CONTRACTOR. TELEPHONE SERVICE CONDUCTORS SHALL BE PROVIDED BY UTILITY COMPANY.
Q. THE NUMBER SHOWN NEXT TO EACH DEVICE OR FIXTURE REPRESENTS A CIRCUIT. SEE OVERALL POWER PLANS AND PANEL SCHEDULES OR ALL UNIT CIRCUITRY.

PLAN NOTES:

- 1. PROVIDE OCCUPANCY SIGNAGE IN MEMORY CARE RESTROOMS.
2. SLAVE REFRIGERATOR RECEPTACLE TO BE ON COUNTERTOP RECEPTACLE TO PROVIDE GROUND PROTECTION FOR REFRIGERATOR.
3. BUILDING FIRE ALARM SYSTEM ALARM INDICATION WITH VISUAL ALARM (HORN) STORAGE DEVICE 30" DEVICE SHALL BE MOUNTED WITHIN 18" OF NEAREST ALL CORNER.
4. PROVIDE AND INSTALL WIRING TO REWIRED LOCATION BASED ON SYMBOL: (1) CAT 5e OR TELEPHONE; (2) CAT 6 OR DATA; (3) RG COAXIAL CABLE; (4) OR TELEVISION.
5. PROVIDE ELECTRICAL CONNECTION AND SAFETY SWITCH OR MECHANICAL EQUIPMENT VERIFY AND ACT REQUIREMENTS WITH MANUFACTURERS NAMEPLATE. COORDINATE ELECTRICAL LOCATION WITH MECHANICAL CONTRACTOR PRIOR TO ROUGH-IN. LOCATE PLUG OR P/FAC UNIT BESIDE UNIT WHERE APPLICABLE.
6. VERIFY ELECTRICAL LOCATIONS OF BATHROOM EXHAUST FANS WITH MECHANICAL DRAWINGS.
7. LOCATE CEILING MOUNTED SMOKE DETECTORS PER THE LATEST NFPA 72 GUIDELINES AND THE MANUFACTURERS PUBLISHED RECOMMENDATIONS OR THE SPECIFIC TYPE OF DETECTOR. MAINTAIN 4 INCHES TO THE EDGE OF THE DETECTOR FROM THE CLOSEST VERTICAL SURFACE (TYPICAL OF ALL).
8. CONTRACTOR SHALL PROVIDE UNDERCABINET LIGHTING AND FIELD COORDINATE ELECTRICAL LENGTH SO THAT THERE IS MINIMUM 17" PER SECTION. CONTRACTOR SHALL VERIFY WITH A LIGHT METER THAT THE ILLUMINATION LEVEL IS A MINIMUM OF 50 FOOTCANDLES THROUGHOUT THE COUNTERTOP SURFACES AND ADD ADDITIONAL UNDERCABINET LIGHTING IF NECESSARY.
9. SEE ELECTRICAL SHEETS, "E2" SERIES, FOR MECHANICAL AND POWER CIRCUITING INFORMATION.
10. RECEPTACLE TO BE HOSPITAL GRADE AND CIRCUITED TO GENERATOR, REFERENCE E2 SERIES SHEETS OR MORE INFORMATION.

CONTRACTOR NOTE

IT IS THE RESPONSIBILITY OF THE CONTRACTOR TO NOTIFY THE ARCHITECT, LANDLORD AND TENANT OF ANY DISCREPANCIES ENCOUNTERED ON THE PLANS OR IN EXISTING SITE CONDITIONS PRIOR TO SUBMISSION OF BID.
BIDDERS ARE TO VISIT THE SITE AND FAMILIARIZE THEMSELVES WITH THE EXISTING CONDITIONS AND SATISFY THEMSELVES AS TO THE NATURE AND SCOPE OF THE WORK. THE BASE BID SHALL REFLECT MODIFICATIONS TO SYSTEMS AND DEVICES AS REQUIRED BY STATE, LOCAL AND FEDERAL CODES. WHETHER INDICATED OR NOT ON CONTRACT DOCUMENTS. THE SUBMISSION OF A BID WILL BE EVIDENCE THAT SUCH AN EXAMINATION AND COMPLIANCE WITH GOVERNING CODES/REQUIREMENTS HAS BEEN MADE. LATER CLAIMS OR LABOR, EQUIPMENT, OR MATERIALS REQUIRED, OR OTHER DIFFICULTIES ENCOUNTERED WHICH COULD HAVE BEEN FORESEEN HAD AN EXAMINATION AND CODES/REQUIREMENTS REVIEW BEEN MADE, WILL NOT BE ALLOWED.

pi architects
3500 Jefferson St. Suite 303
Austin, TX 78731
P: (512) 231-1910
F: (512) 231-1950

PE Services
These plans have been properly examined by the undersigned. I have determined that they comply with existing local Louisiana codes, and have been properly adapted to use in this area.

WATERSTONE AT BATON ROUGE
ASSISTED LIVING & MEMORY CARE
SIEGEN LANE
BATON ROUGE, LA 70810

ISSUE: PERMIT SET

©2015 PI ARCHITECTS, INC.

REVISIONS:

DATE: 03/31/2016
PROJECT NUMBER: PES 15090
SHEET TITLE:

ENLARGED UNIT PLANS

SHEET:

E4.2