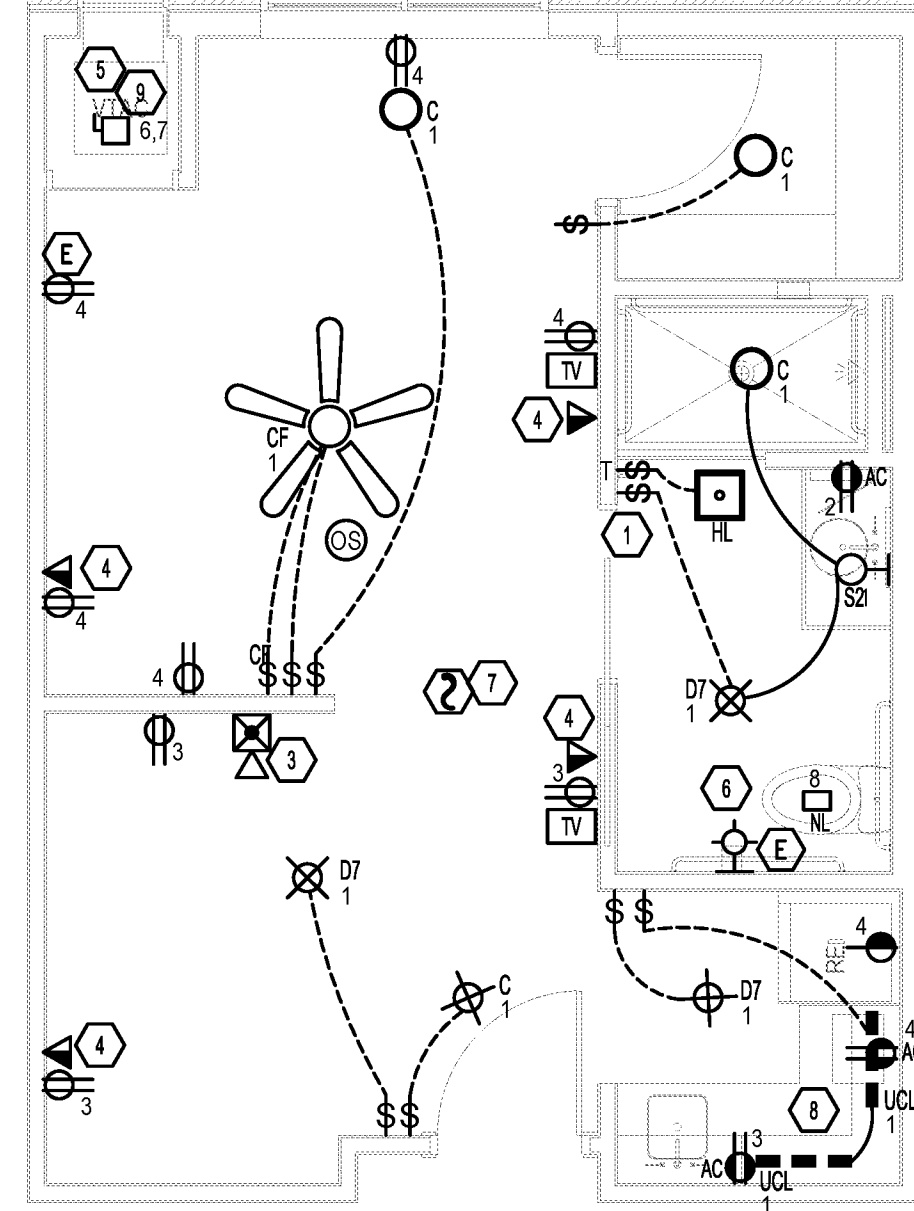
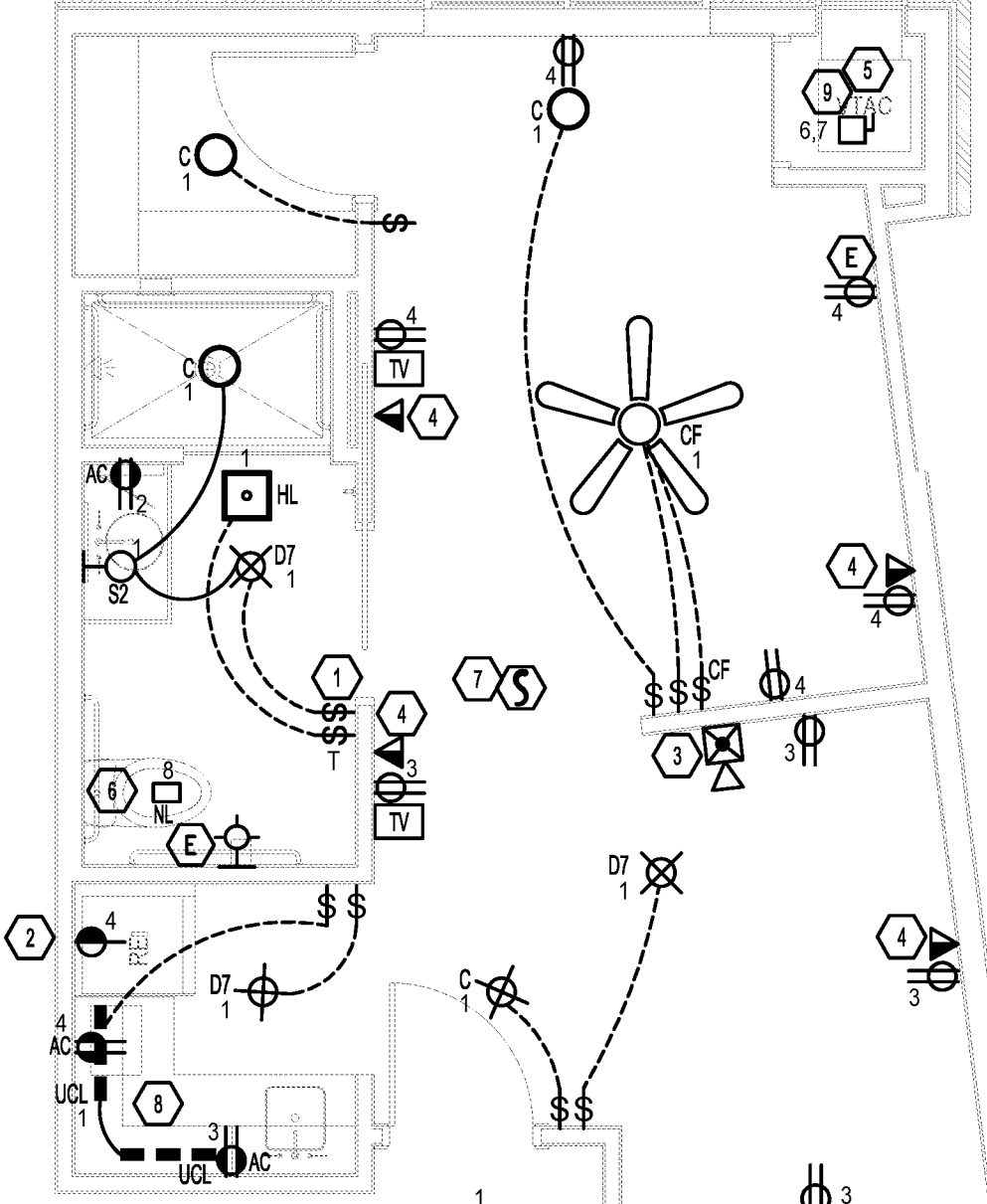


AL 1 BEDROOM A1.1 436 Sq. Ft.
 C 1.1 LIGHTING
 C 2.2 BATH REC 1800
 C 3.3 REC 900
 C 4.4 REC 900
 C 5.5 RIG REC 1160
 C 6.7 VTAC
 C 7.8 NIGHT LIGHT 15



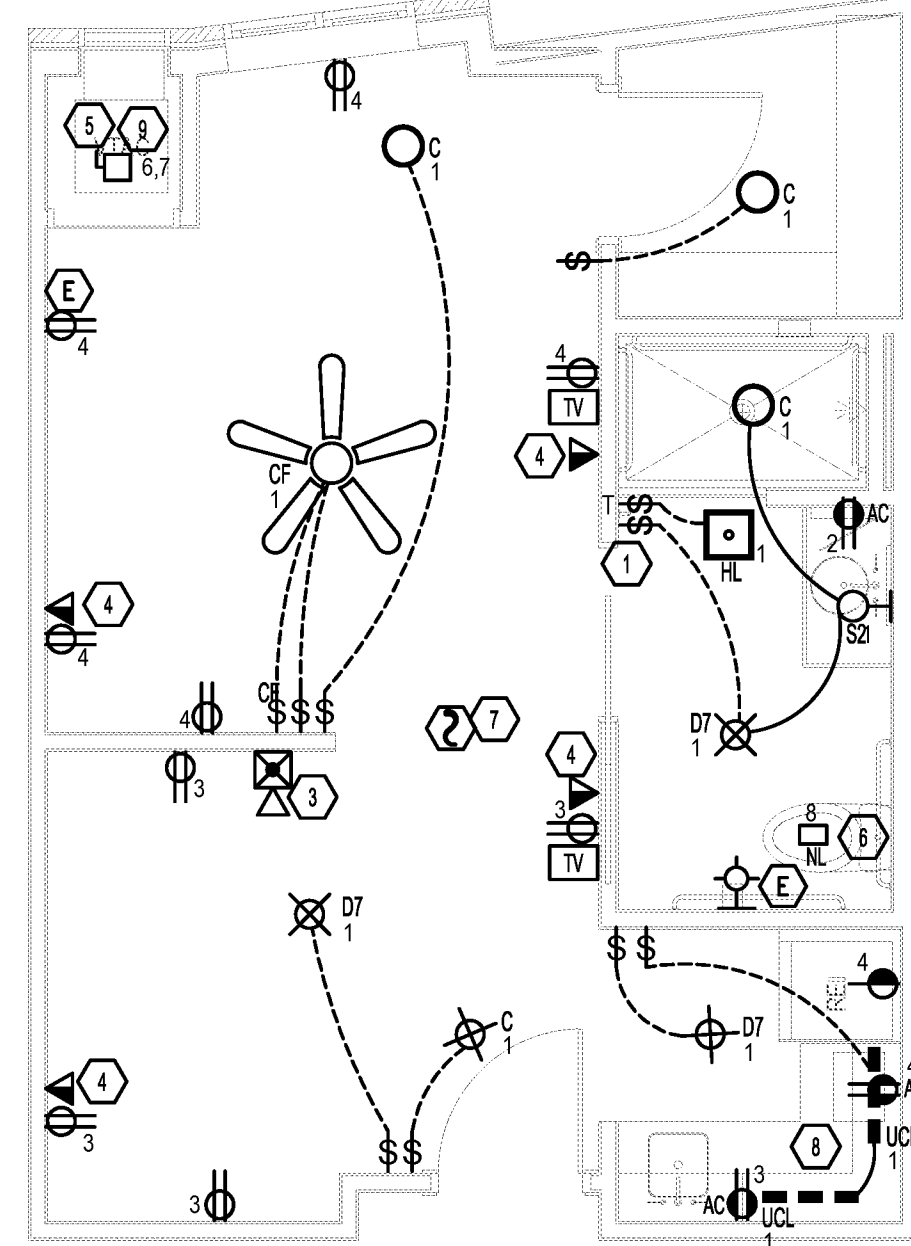
1 | AL STUDIO UNIT A1.1
 E4.1 | 1/4" = 1'-0"

AL 1 BEDROOM A1.2 436 Sq. Ft.
 C 1.1 LIGHTING
 C 2.2 BATH REC 1800
 C 3.3 REC 900
 C 4.4 REC 900
 C 5.5 RIG REC 1160
 C 6.7 VTAC
 C 7.8 NIGHT LIGHT 15



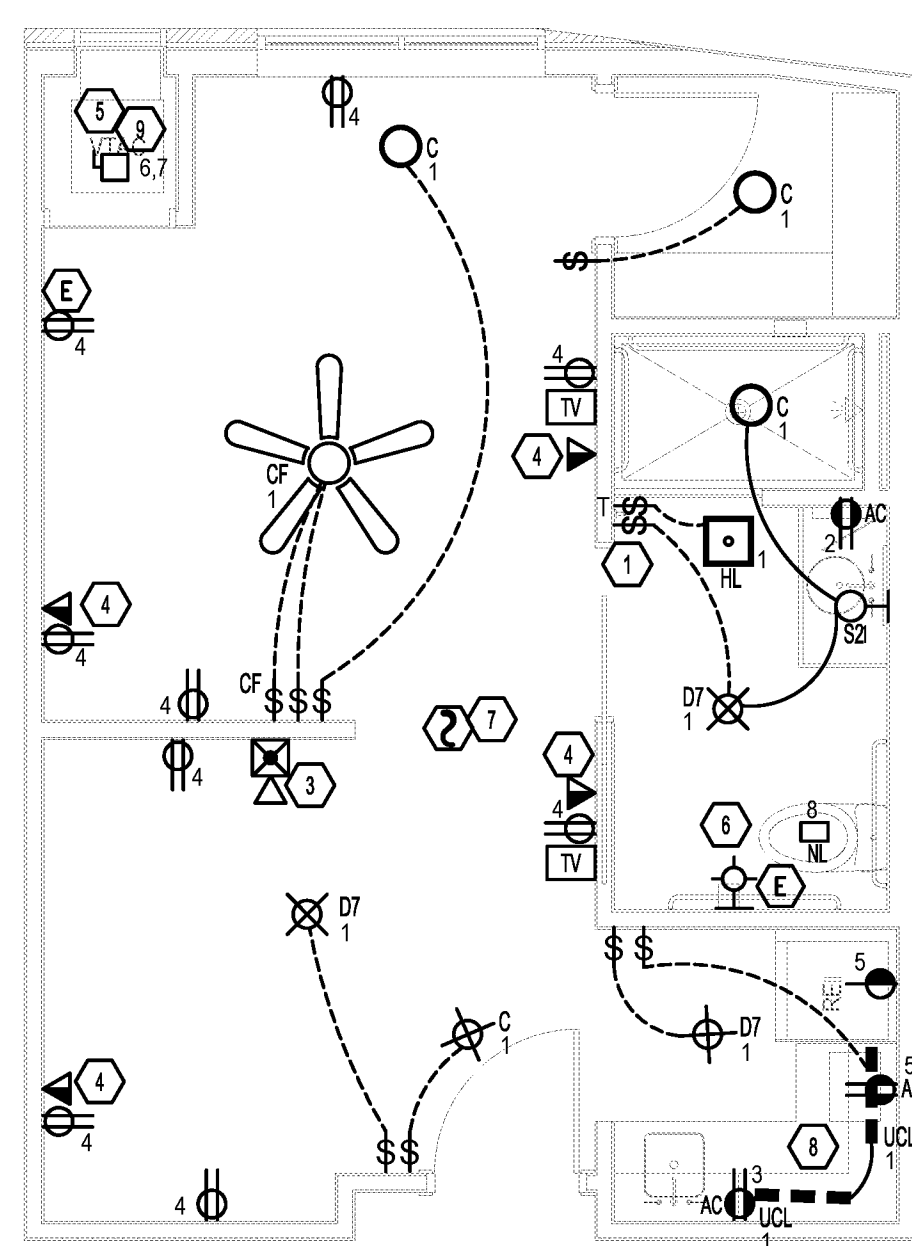
1 | AL STUDIO UNIT A1.2
 E4.1 | 1/4" = 1'-0"

AL 1 BEDROOM A1.3 436 Sq. Ft.
 C 1.1 LIGHTING
 C 2.2 BATH REC 1800
 C 3.3 REC 900
 C 4.4 REC 900
 C 5.5 RIG REC 1160
 C 6.7 VTAC
 C 7.8 NIGHT LIGHT 15



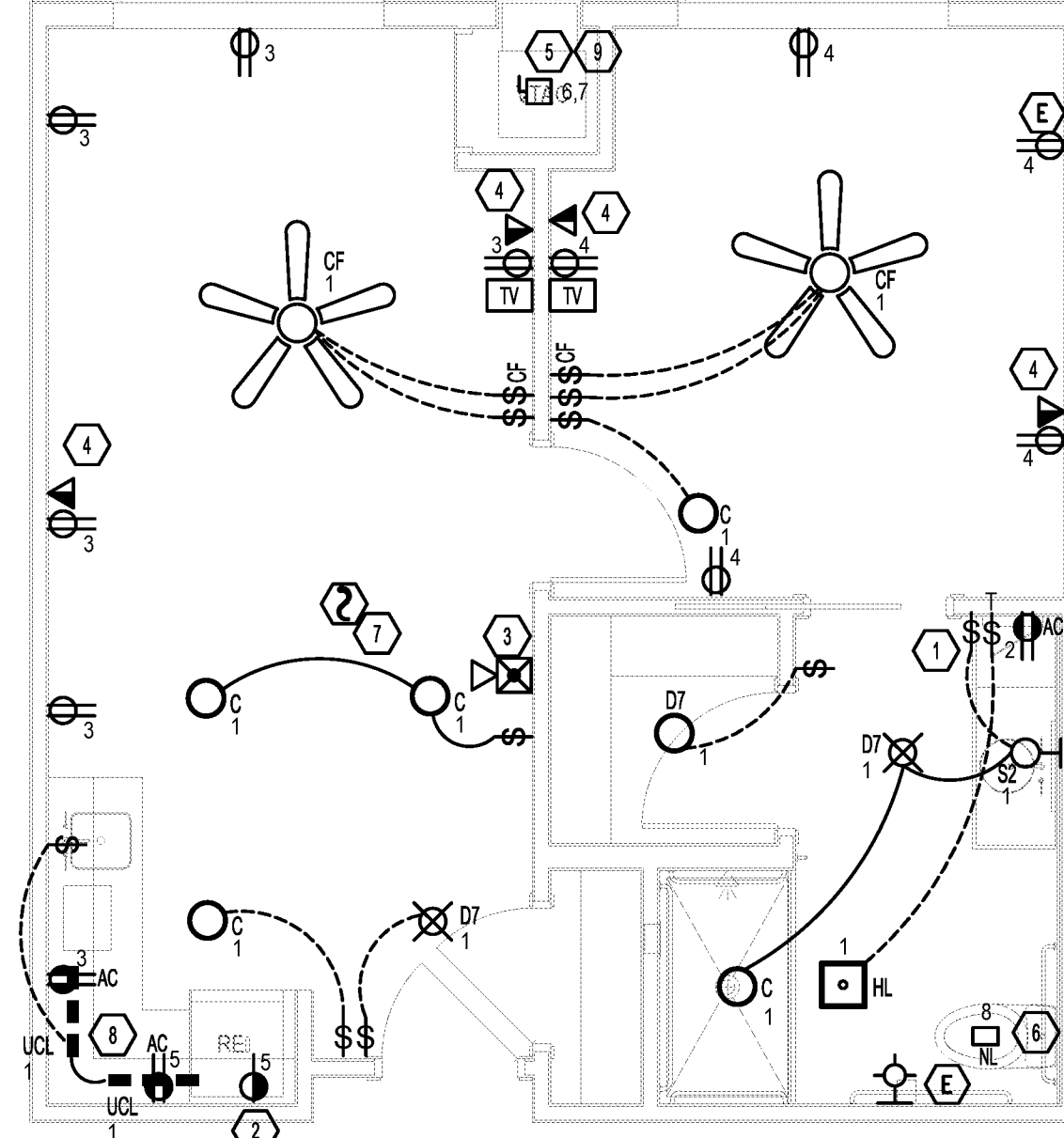
1 | AL STUDIO UNIT A1.3
 E4.1 | 1/4" = 1'-0"

AL 1 BEDROOM A1.4 436 Sq. Ft.
 C 1.1 LIGHTING
 C 2.2 BATH REC 1800
 C 3.3 REC 900
 C 4.4 REC 900
 C 5.5 RIG REC 1160
 C 6.7 VTAC
 C 7.8 NIGHT LIGHT 15



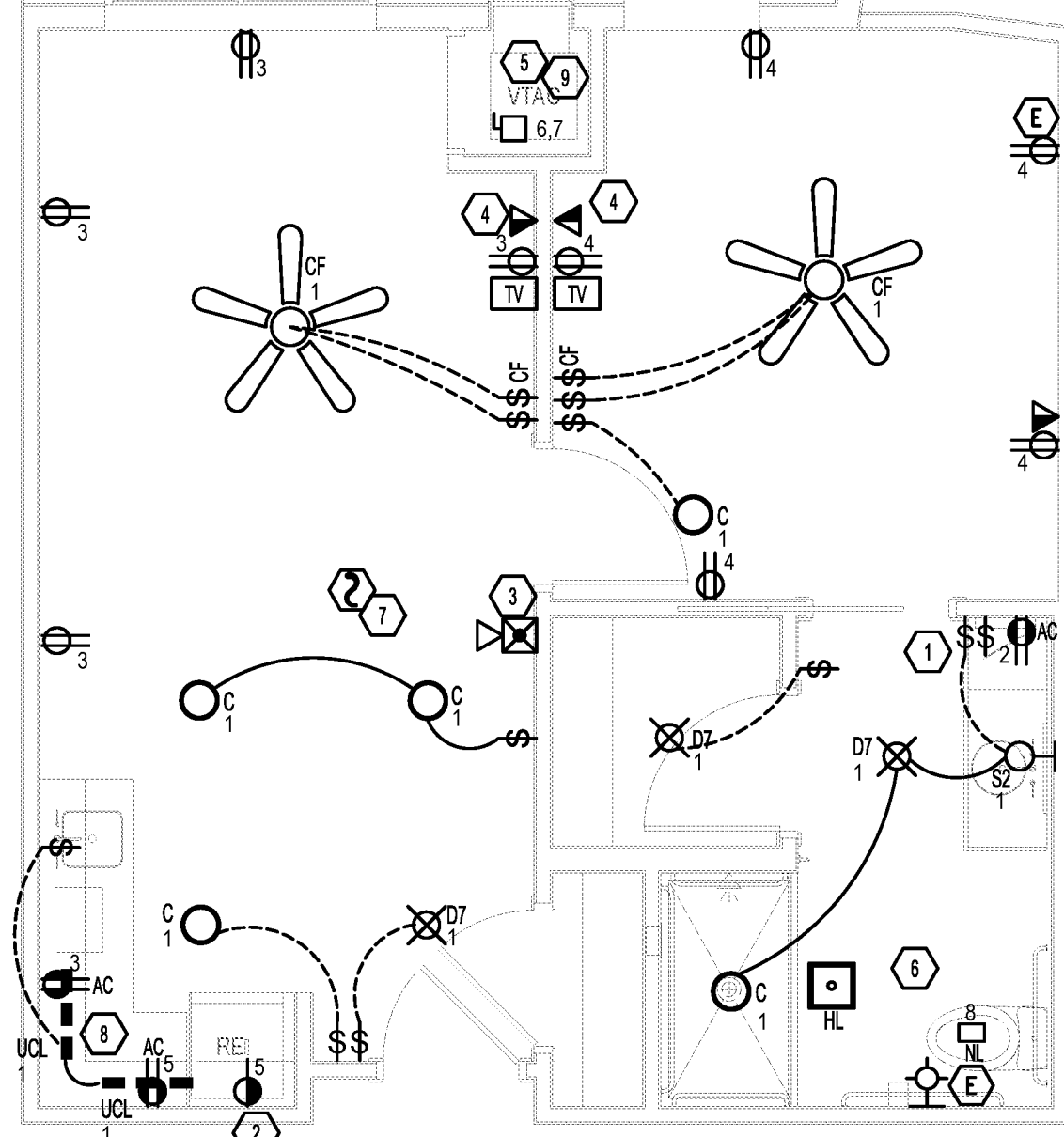
1 | AL STUDIO UNIT A1.4
 E4.1 | 1/4" = 1'-0"

AL 1 BEDROOM B1.1, B1.2 603 Sq. Ft.
 C 1.1 LIGHTING
 C 2.2 BATH REC 1800
 C 3.3 REC 1080
 C 4.4 REC 720
 C 5.5 RIG REC 1160
 C 6.7 VTAC
 C 7.8 NIGHT LIGHT 15



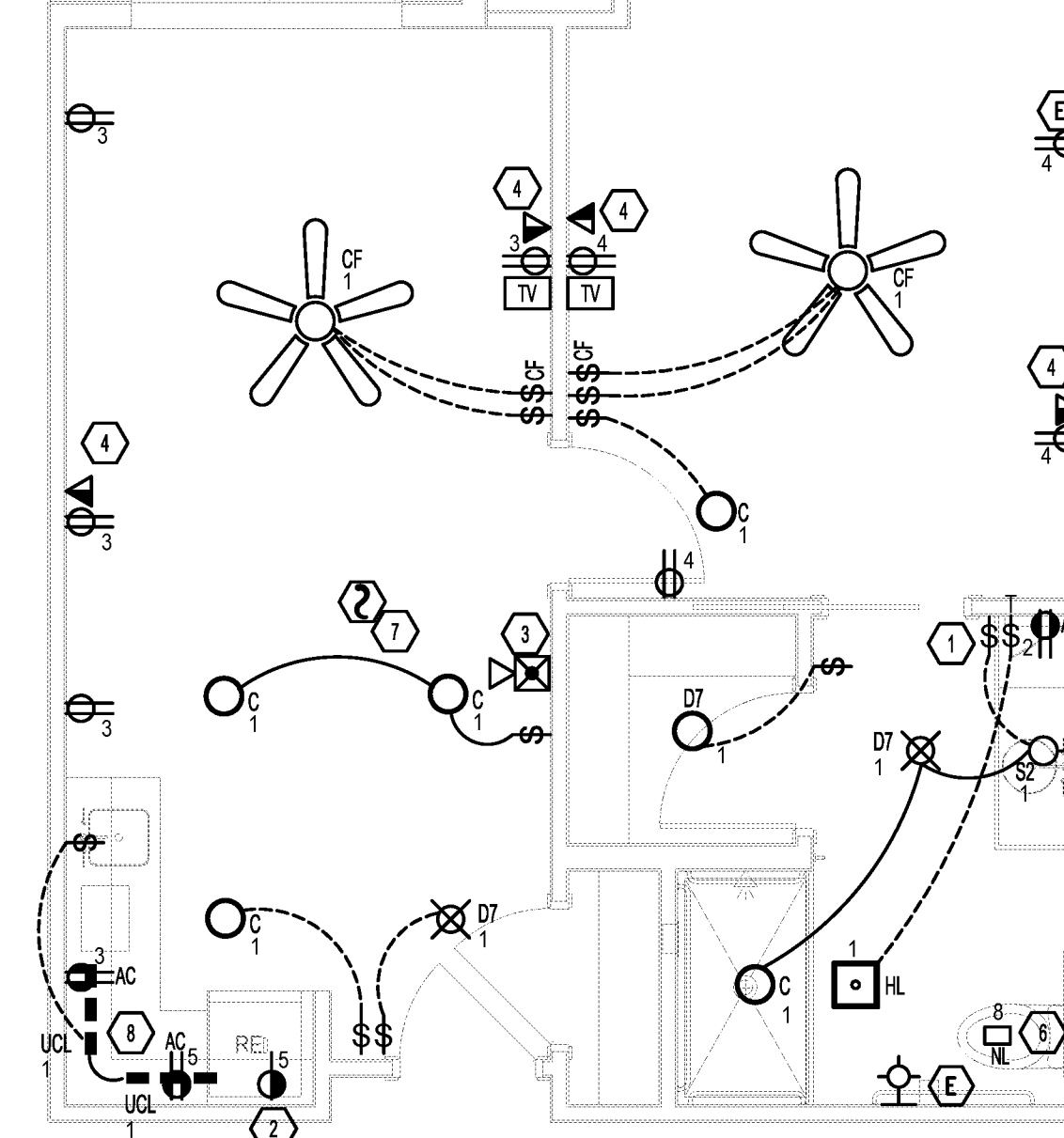
1 | AL STUDIO UNIT B1.1, B1.2
 E4.1 | 1/4" = 1'-0"

AL 1 BEDROOM B1.3 552 Sq. Ft.
 C 1.1 LIGHTING
 C 2.2 BATH REC 1800
 C 3.3 REC 1080
 C 4.4 REC 720
 C 5.5 RIG REC 1160
 C 6.7 VTAC
 C 7.8 NIGHT LIGHT 15



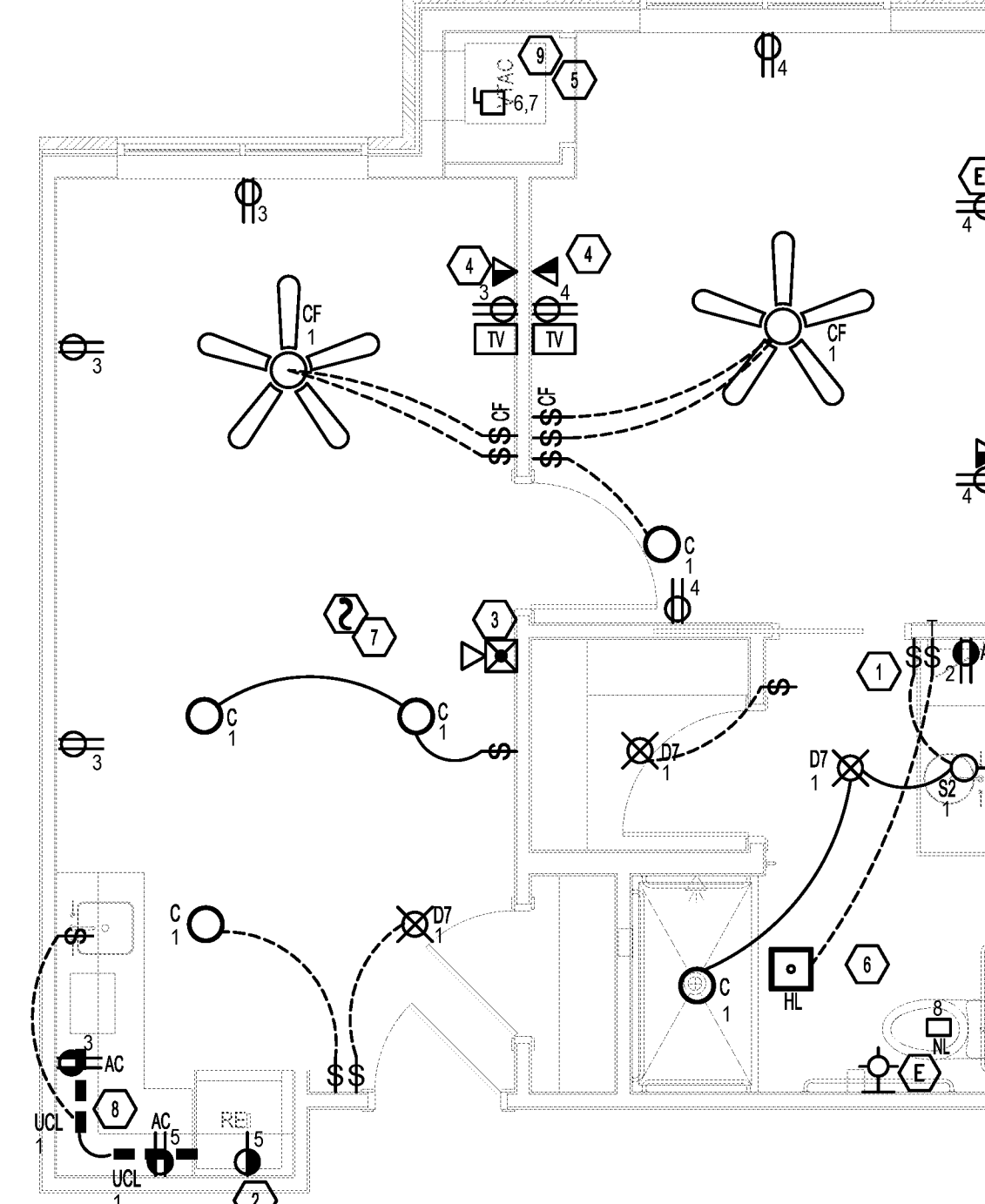
1 | AL STUDIO UNIT B1.3
 E4.1 | 1/4" = 1'-0"

AL 1 BEDROOM B2.1 603 Sq. Ft.
 C 1.1 LIGHTING
 C 2.2 BATH REC 1800
 C 3.3 REC 1080
 C 4.4 REC 720
 C 5.5 RIG REC 1160
 C 6.7 VTAC
 C 7.8 NIGHT LIGHT 15



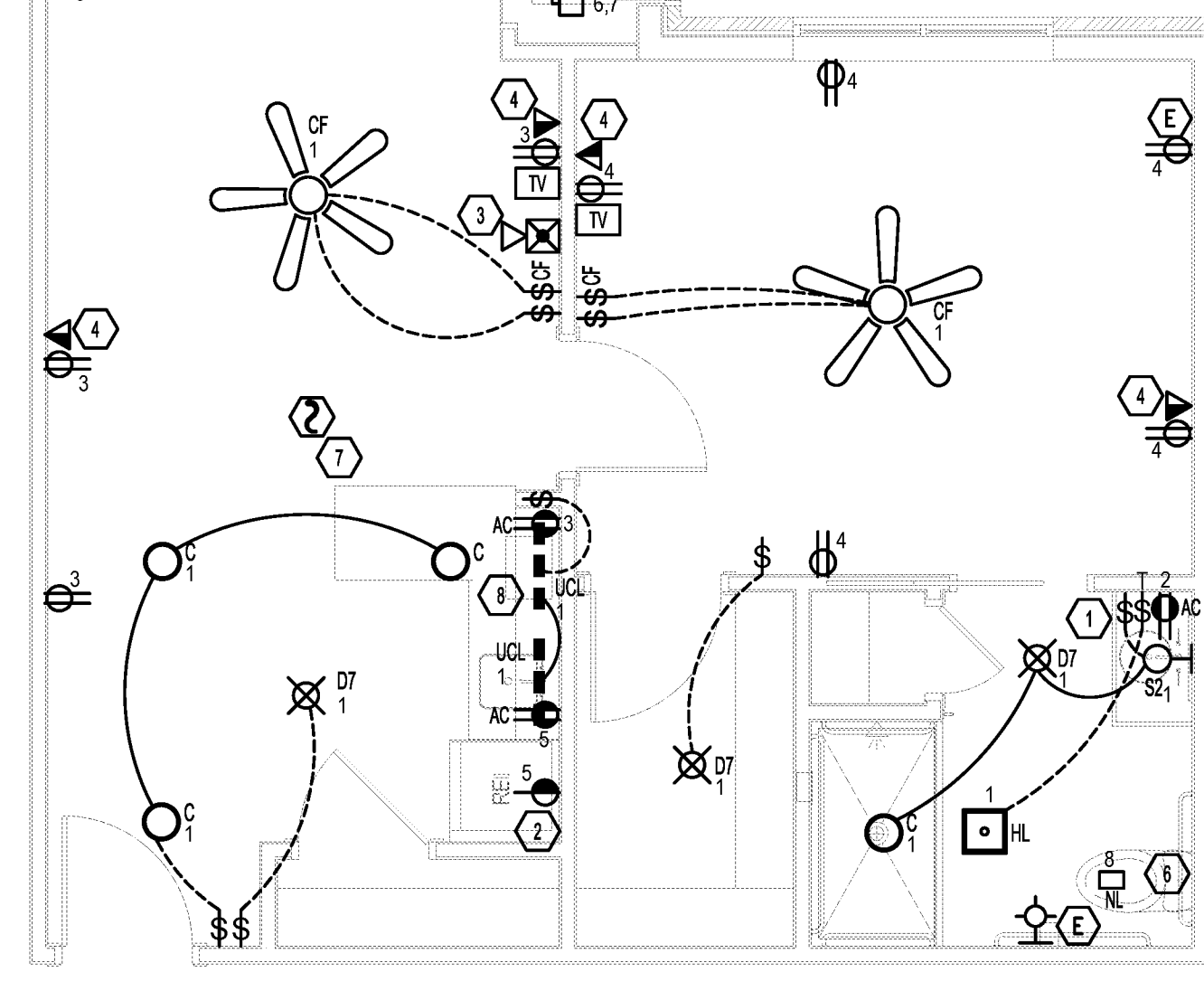
1 | AL STUDIO UNIT B2.1
 E4.1 | 1/4" = 1'-0"

AL 1 BEDROOM B2.2 552 Sq. Ft.
 C 1.1 LIGHTING
 C 2.2 BATH REC 1800
 C 3.3 REC 1080
 C 4.4 REC 720
 C 5.5 RIG REC 1160
 C 6.7 VTAC
 C 7.8 NIGHT LIGHT 15



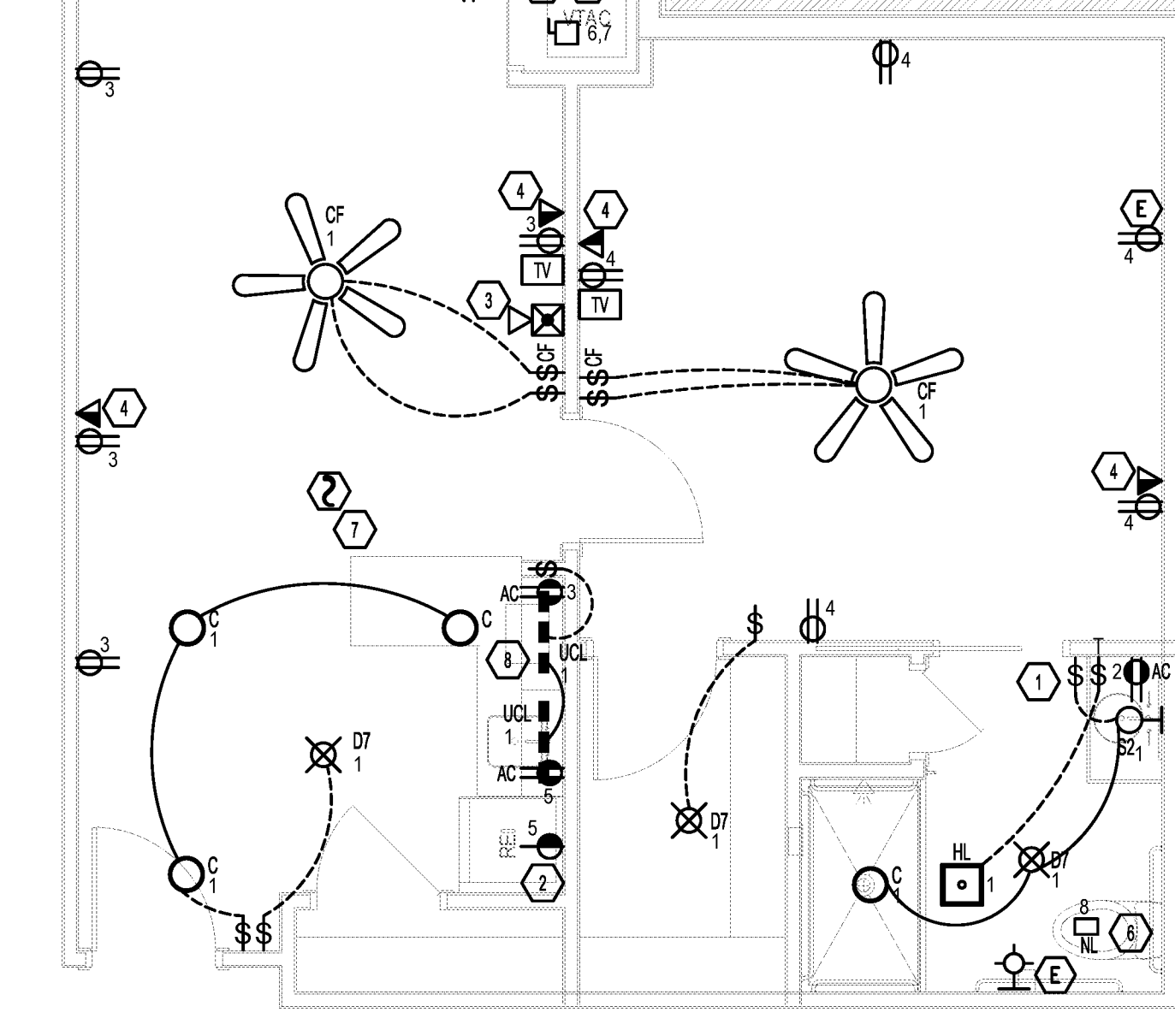
1 | AL STUDIO UNIT B2.2
 E4.1 | 1/4" = 1'-0"

AL 1 BEDROOM C1.1 658 Sq. Ft.
 C 1.1 LIGHTING
 C 2.2 BATH REC 1800
 C 3.3 REC 1260
 C 4.4 REC 720
 C 5.5 RIG REC 1160
 C 6.7 VTAC
 C 7.8 NIGHT LIGHT 15



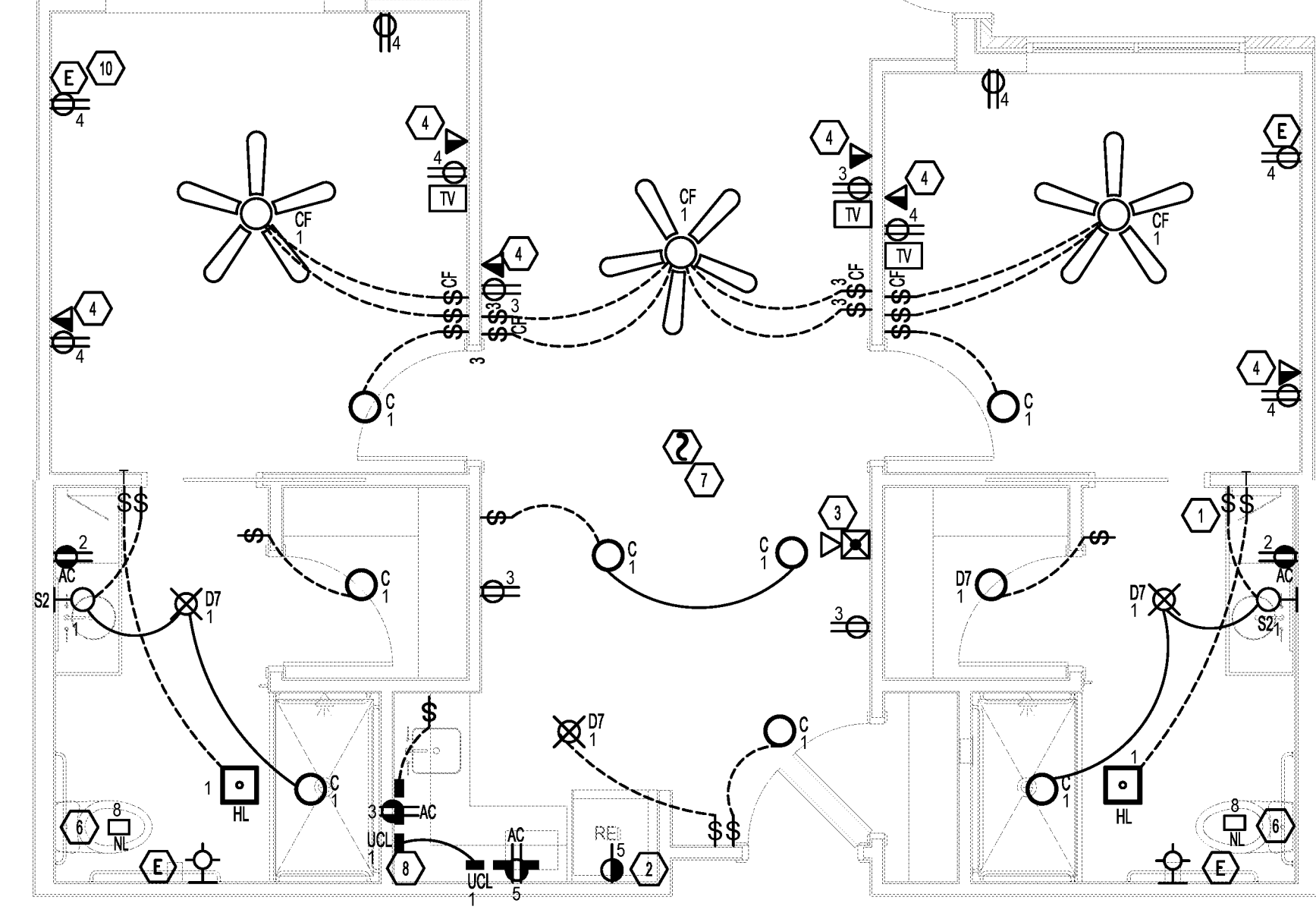
1 | AL STUDIO UNIT C1.1
 E4.1 | 1/4" = 1'-0"

AL 1 BEDROOM C1.2 658 Sq. Ft.
 C 1.1 LIGHTING
 C 2.2 BATH REC 1800
 C 3.3 REC 1260
 C 4.4 REC 720
 C 5.5 RIG REC 1160
 C 6.7 VTAC
 C 7.8 NIGHT LIGHT 15



1 | AL STUDIO UNIT C1.2
 E4.1 | 1/4" = 1'-0"

AL 2 BEDROOM D1.1, D1.2 876 Sq. Ft.
 C 1.1 LIGHTING
 C 2.2 BATH REC 3600
 C 3.3 REC 1260
 C 4.4 REC 1440
 C 5.5 RIG REC 1160
 C 6.7 VTAC
 C 7.8 NIGHT LIGHT 15



1 | AL STUDIO UNIT D1.1, D1.2
 E4.1 | 1/4" = 1'-0"

- GENERAL NOTES:**
- ALL WORK SHALL MEET OR EXCEED THE MOST CURRENT EDITION OF THE NATIONAL ELECTRICAL CODE, STATE CODES AND LOCAL CODES.
 - WHEN CONFLICTS OCCUR BETWEEN THE PLANS AND OR SPECIFICATIONS WITH ANY LOCAL CODES, THE MOST STRINGENT REQUIREMENTS APPLY.
 - SEE MAIN ELECTRICAL GENERAL NOTES, SYMBOL LEGEND, LUMINAIRE SCHEDULE, LINETYPE LEGEND, AND ELECTRICAL NOTATIONS ON THE ELECTRICAL COVER SHEET OR MORE INFORMATION.
 - VERIFY ELECTRICAL LOCATIONS AND MOUNTING HEIGHTS FOR ALL DEVICES AND FIXTURES PRIOR TO ROUGH-IN.
 - ELECTRICAL CONTRACTOR SHALL COORDINATE THE COLOR OF ALL SWITCHES, RECEPTACLES, ETC. AND COVER PLATES WITH ARCHITECT, INTERIOR COMMUNICATIONS CONTRACTOR, AND INTERIOR DESIGNER.
 - COORDINATE ALL WORK WITH OTHER TRADES PRIOR TO ROUGH-IN.
 - IN ALL AREAS SPECIFIED IN NEC 210.52, ALL 15 AND 20 AMP, 120 VOLT RECEPTACLES SHALL BE LISTED TAMPER-RESISTANT RECEPTACLES.
 - ELECTRICAL CONTRACTOR SHALL PROVIDE SAFETY SWITCHES FOR ALL HVAC AND PLUMBING EQUIPMENT IN ACCORDANCE WITH THE NATIONAL ELECTRICAL CODE.
 - DEVICES INSTALLED IN FIRE SEPARATION WALLS/Ceilings SHALL BE INSTALLED IN ACCORDANCE WITH THE LISTING AND LABELING OF THE RATED ASSEMBLY. DO NOT INSTALL OUTLET BOXES THIN THE SAME STUD SPACE.
 - LIGHT FIXTURES INSTALLED IN CLOSETS SHALL CONFORM TO NEC ARTICLE 410.16.
 - ALL PRODUCTS USED FOR FIRE-STOP SYSTEMS SHALL BE RATED FOR COMMERCIAL CONSTRUCTION.
 - UNLESS NOTED OTHERWISE ALL RECEPTACLES SHALL BE MOUNTED 18" A.F.
 - ALL FIRE MARKED "AC" SHALL BE MOUNTED 14" A.F. UNLESS SPECIFICALLY NOTED OTHERWISE.
 - PROVIDE CAT/TELEPHONE/DATA BODIES 18" A.F. ROUGH-IN ONLY, UNLESS NOTED OTHERWISE.
 - CABLE TV/COAXIAL CABLE IN EACH UNIT SHALL BE INSTALLED BY THE ELECTRICAL FINISH PLATES. CABLE SERVICE CONDUCTORS SHALL BE PROVIDED BY THE UTILITY COMPANY.
 - TELEPHONE WIRING (CAT 5e) IN EACH UNIT SHALL BE INSTALLED BY THE ELECTRICAL FINISH PLATES. TELEPHONE SERVICE CONDUCTORS SHALL BE PROVIDED BY UTILITY COMPANY.
 - THE NUMBER SHOWN NEXT TO EACH DEVICE/TURE REPRESENTS A CIRCUIT. SEE OVERALL PANEL PLANS AND PANEL SCHEDULES FOR ALL UNIT CIRCUITRY.

- PLAN NOTES:**
- PROVIDE OCCUPANCY SWITCH IN MEMORY CARE RESTROOMS.
 - SLAVE REFRIGERATOR RECEPTACLE OUTLET COUNTERTOP RECEPTACLE TO PROVIDE GFCI PROTECTION FOR REFRIGERATOR.
 - BUILDING FIRE ALARM SYSTEM ALARM INDICATION WITH VISUAL ALARM/HORN STROBE DEVICE 80" DEVICE SHALL BE MOUNTED WITHIN 48" OF NEAREST CORNER.
 - PROVIDE AND INSTALL WIRING TO REWIRED LOCATION BASED ON SYMBOL, 11" CAT 5e OR TELEPHONE, 11" CAT 6 OR DATA, 11" RG6 COAXIAL CABLE OR TELEVISION.
 - PROVIDE ELECTRICAL CONNECTION AND SAFETY SWITCH FOR MECHANICAL EQUIPMENT. VERIFY ELECTRICAL REQUIREMENTS WITH MANUFACTURERS NAMEPLATE. COORDINATE ELECTRICAL LOCATION WITH MECHANICAL CONTRACTOR PRIOR TO ROUGH-IN. LOCATE PLUG OR PTAC UNIT BESIDE UNIT IF APPLICABLE.
 - VERIFY ELECTRICAL LOCATIONS OF BATHROOM EXHAUSTS WITH MECHANICAL DRAWINGS.
 - LOCATE CEILING MOUNTED SMOKE DETECTORS PER THE LATEST NFPA 72 GUIDELINES AND THE MANUFACTURERS PUBLISHED RECOMMENDATIONS OR THE SPECIFIC TYPE OF DETECTOR MAINTAIN 4 INCHES TO THE EDGE OF THE DETECTOR FROM THE CLOSEST VERTICAL SURFACE TYPICAL OF ALL.
 - CONTRACTOR SHALL PROVIDE UNDERCABINET LIGHTING AND FIELD COORDINATE ELECTRICAL LENGTH SO THAT THERE IS MINIMUM 17" PER 2' SECTION. CONTRACTOR SHALL VERIFY WITH A LIGHT METER THAT THE ILLUMINATION LEVEL IS A MINIMUM OF 50 FOOT-CANDLES THROUGHOUT THE COUNTERTOP SURFACES AND ADD ADDITIONAL UNDERCABINET LIGHTING IF NECESSARY.
 - SEE ELECTRICAL SHEETS, "E2" SERIES, FOR MECHANICAL AND POWER CIRCUITING INFORMATION.

CONTRACTOR NOTE:

IT IS THE RESPONSIBILITY OF THE CONTRACTOR TO NOTIFY THE ARCHITECT, LANDLORD AND TENANT OF ANY DISCREPANCIES ENCOUNTERED ON THE PLANS OR IN EXISTING SITE CONDITIONS PRIOR TO SUBMISSION OF BID.

BIDDERS ARE TO VISIT THE SITE AND FAMILIARIZE THEMSELVES WITH THE EXISTING CONDITIONS AND SATISFY THEMSELVES AS TO THE NATURE AND SCOPE OF THE WORK. THE BASE BID SHALL REFLECT MODIFICATIONS TO SYSTEMS AND DEVICES AS REQUIRED BY STATE, LOCAL AND FEDERAL CODES. WHETHER INDICATED OR NOT ON CONTRACT DOCUMENTS THE SUBMISSION OF A BID WILL BE EVIDENCE THAT SUCH AN EXAMINATION AND COMPLIANCE WITH GOVERNING CODES/REQUIREMENTS HAS BEEN MADE. LATER CLAIMS FOR LABOR, EQUIPMENT, OR MATERIALS REQUIRED, OR FOR INADEQUACIES ENCOUNTERED WHICH COULD HAVE BEEN FORESEEN HAD AN EXAMINATION AND CODE/REQUIREMENTS REVIEW BEEN MADE, WILL NOT BE ALLOWED.

II

pi architects

3500 Jefferson St. Suite 303
 Austin, TX 78731

P: (512) 231-1910
 F: (512) 231-1950

www.piarch.com

architecture + interior design + landscape architecture

PE Services

REGISTERED PROFESSIONAL ENGINEER
 LICENSE NO. 36319

These plans have been properly examined by the undersigned. I have determined that they comply with existing local Louisiana codes, and have been properly adapted to use in this area.

STATE OF LOUISIANA
 ROBERT M. SIEGEN
 License No. 36319
 PROFESSIONAL ENGINEER

**WATERSTONE AT BATON ROUGE
 ASSISTED LIVING & MEMORY CARE**

SIEGEN LANE
 BATON ROUGE, LA 70810

ISSUE: PERMIT SET

REVISIONS:

DATE: 03/31/2016
 PROJECT NUMBER: PES 15090
 SHEET TITLE: ENLARGED UNIT PLANS

SHEET: E4.1