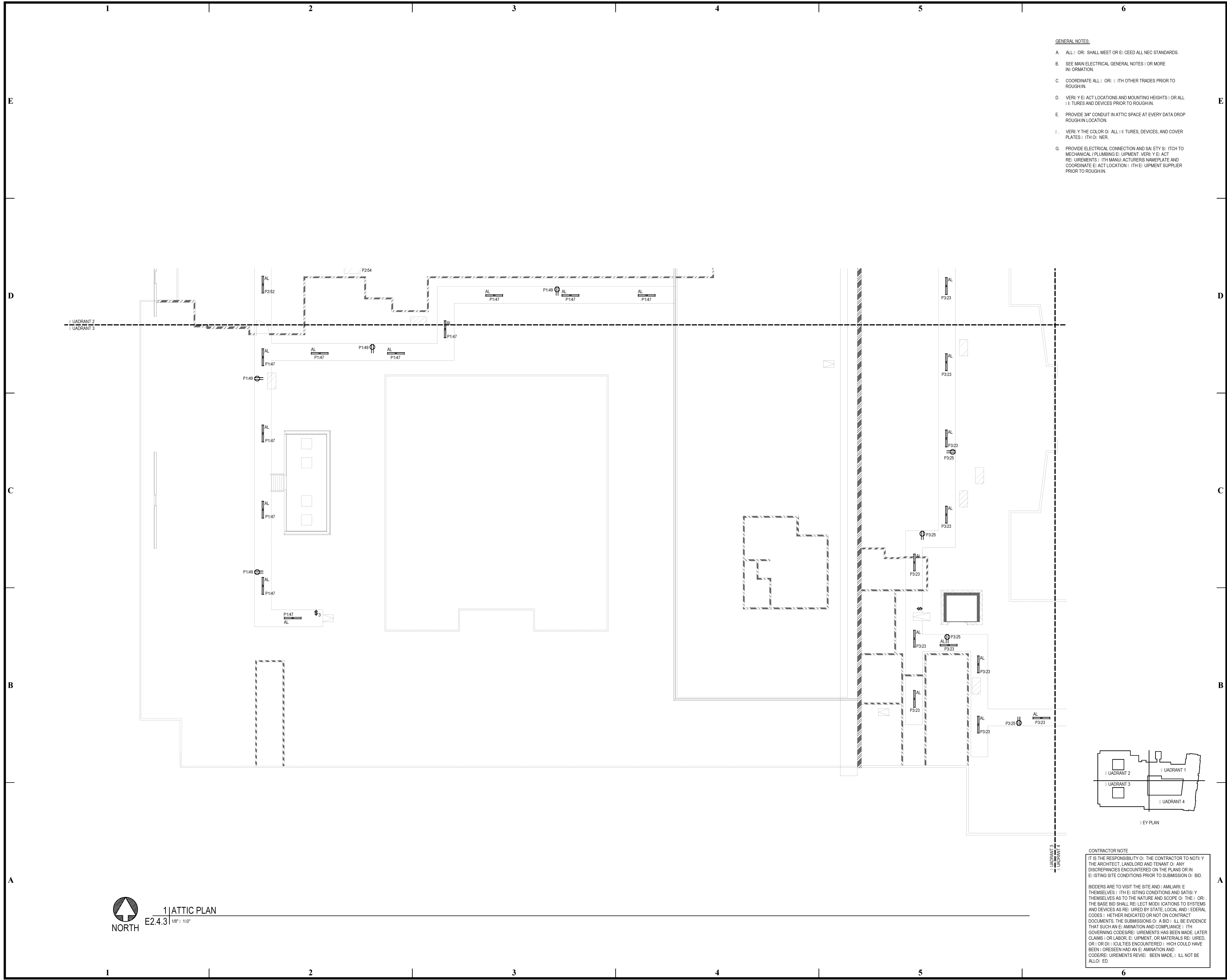
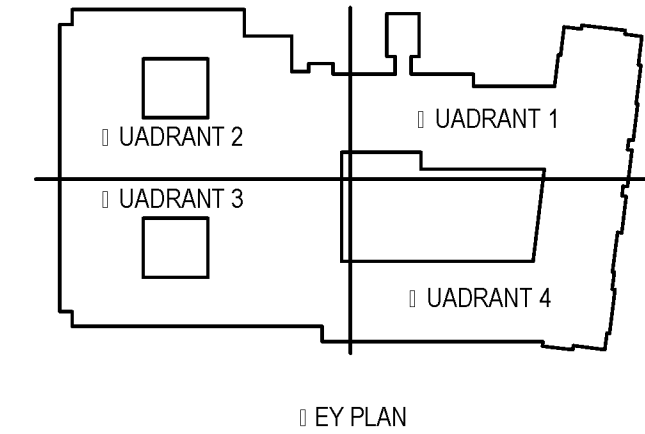


BIM Server: Server2012 - BIM Server (18/01/14)17 Concordia Baton Rouge | Ver: 18.001 | Wednesday, September 02, 2015 | 4:04 PM



1 | ATTIC PLAN  
E2.4.3 | 1/8" = 1'-0"

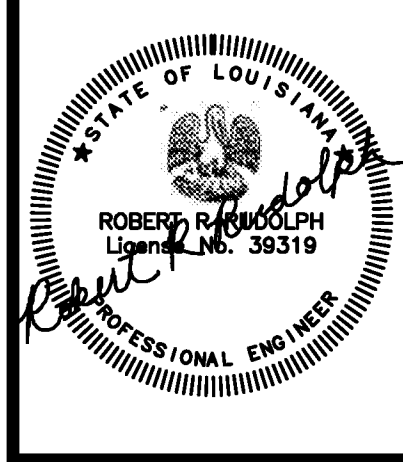


CONTRACTOR NOTE  
IT IS THE RESPONSIBILITY OF THE CONTRACTOR TO NOTIFY THE ARCHITECT, LANDLORD AND TENANT OF ANY DISCREPANCIES ENCOUNTERED ON THE PLANS OR IN EXISTING SITE CONDITIONS PRIOR TO SUBMISSION OF BID.  
BIDDERS ARE TO VISIT THE SITE AND FAMILIARIZE THEMSELVES WITH EXISTING CONDITIONS AND SATISFY THEMSELVES AS TO THE NATURE AND SCOPE OF THE WORK. THE BASE BID SHALL REFLECT MODIFICATIONS TO SYSTEMS AND DEVICES AS REQUIRED BY STATE, LOCAL AND FEDERAL CODES. WHETHER INDICATED OR NOT ON CONTRACT DOCUMENTS. THE SUBMISSION OF A BID SHALL BE EVIDENCE THAT SUCH AN EXAMINATION AND COMPLIANCE WITH GOVERNING CODES/REGULATIONS HAS BEEN MADE. LATER CLAIMS FOR LABOR, EQUIPMENT, OR MATERIALS REQUIRED, OR OMISSIONS OR DEFICIENCIES ENCOUNTERED WHICH COULD HAVE BEEN FORESEEN HAD AN EXAMINATION AND CODES/REGULATIONS REVIEW BEEN MADE, SHALL NOT BE ALLOWED.

- GENERAL NOTES:
- A. ALL WORK SHALL MEET OR EXCEED ALL NEC STANDARDS.
  - B. SEE MAIN ELECTRICAL GENERAL NOTES FOR MORE INFORMATION.
  - C. COORDINATE ALL WORK WITH OTHER TRADES PRIOR TO ROUGH-IN.
  - D. VERIFY THE ACT LOCATIONS AND MOUNTING HEIGHTS FOR ALL DEVICES AND EQUIPMENT PRIOR TO ROUGH-IN.
  - E. PROVIDE 3/4" CONDUIT IN ATTIC SPACE AT EVERY DATA DROP LOCATION.
  - F. VERIFY THE COLOR OF ALL DEVICES, AND COVER PLATES WITH COVER.
  - G. PROVIDE ELECTRICAL CONNECTION AND SAFETY SWITCH TO MECHANICAL / PLUMBING EQUIPMENT. VERIFY THE ACT REQUIREMENTS WITH MANUFACTURER'S NAMEPLATE AND COORDINATE THE ACT LOCATION WITH THE EQUIPMENT SUPPLIER PRIOR TO ROUGH-IN.

**pi architects**  
3500 Jefferson St. Suite 303  
Austin, TX 78731  
P: (512) 231-1910  
F: (512) 231-1950  
www.piarch.com

architecture + master  
interior + landscape  
architecture  
**PE Services**  
PROFESSIONAL ENGINEER FOR THE STATE OF LOUISIANA  
1-800-997-0000  
www.pe-services.com  
These plans have been properly examined by the undersigned. I have determined that they comply with existing local Louisiana codes, and have been properly site adapted to use in this area.



**WATERSTONE AT BATON ROUGE  
ASSISTED LIVING & MEMORY CARE**  
SIEGEN LANE  
BATON ROUGE, LA 70810

ISSUE: PERMIT SET

©2015 PI ARCHITECTS, INC.  
REVISIONS:

DATE: 03/31/2016  
PROJECT NUMBER: PES 15090  
SHEET TITLE: ATTIC PLAN

SHEET: **E2.4.3**