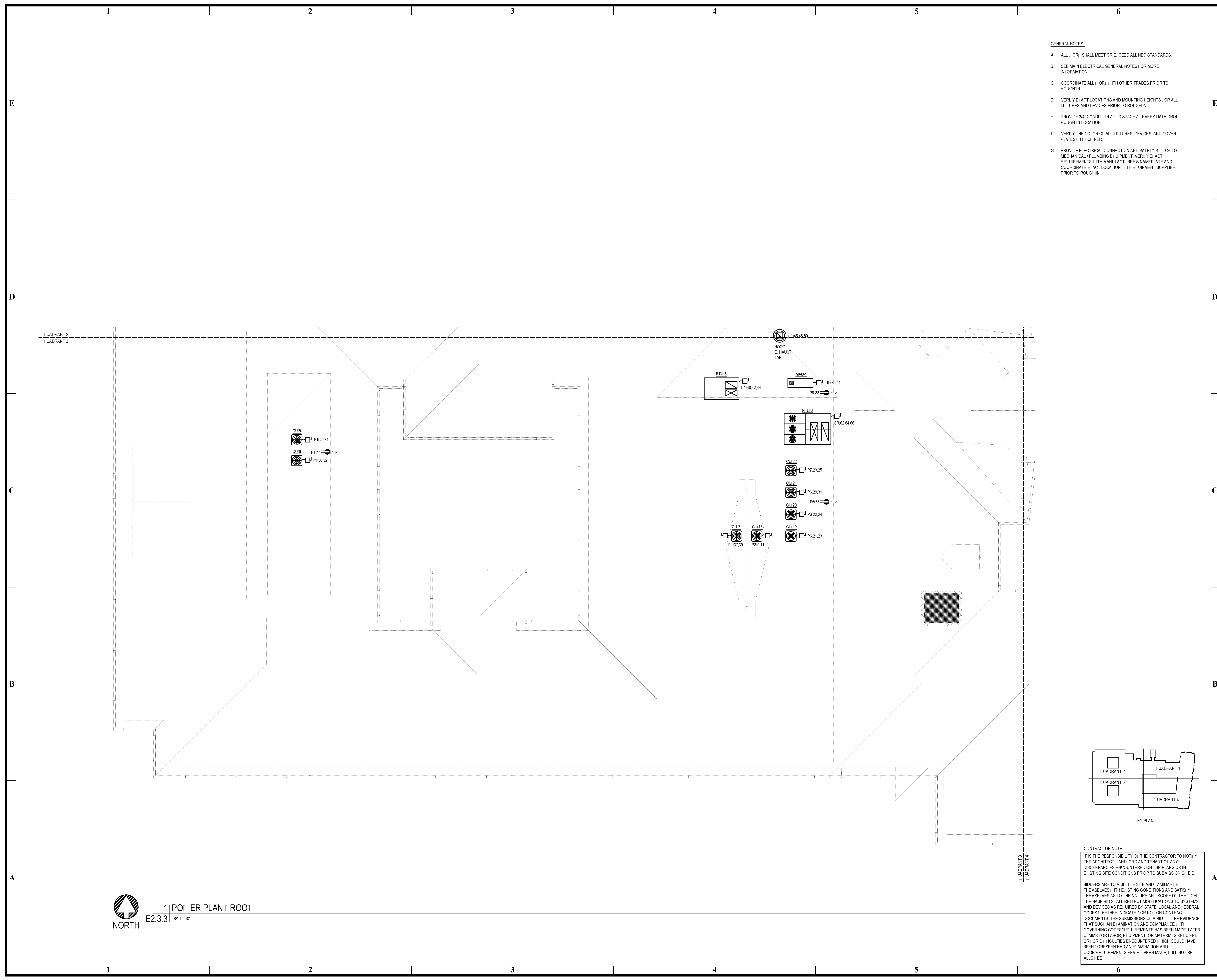
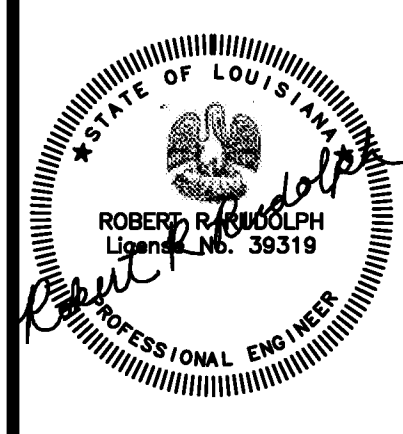


BIM Server: Server2012 - BIM Server (18/07/14017 Concordia Baton Rouge) [Ver: 18.001] [Wednesday, September 02, 2015] 4:04 PM



- GENERAL NOTES:**
- A. ALL WORK SHALL MEET OR EXCEED ALL NEC STANDARDS.
  - B. SEE MAIN ELECTRICAL GENERAL NOTES FOR MORE INFORMATION.
  - C. COORDINATE ALL WORK WITH OTHER TRADES PRIOR TO ROUGH-IN.
  - D. VERIFY THE ACT LOCATIONS AND MOUNTING HEIGHTS FOR ALL DEVICES AND DEVICES PRIOR TO ROUGH-IN.
  - E. PROVIDE 3/4" CONDUIT IN ATTIC SPACE AT EVERY DATA DROP ROUGH-IN LOCATION.
  - F. VERIFY THE COLOR OF ALL DEVICES, DEVICES, AND COVER PLATES WITH OWNER.
  - G. PROVIDE ELECTRICAL CONNECTION AND SAFETY SWITCH TO MECHANICAL / PLUMBING EQUIPMENT. VERIFY THE ACT REQUIREMENTS WITH MANUFACTURER'S NAMEPLATE AND COORDINATE THE ACT LOCATION WITH EQUIPMENT SUPPLIER PRIOR TO ROUGH-IN.

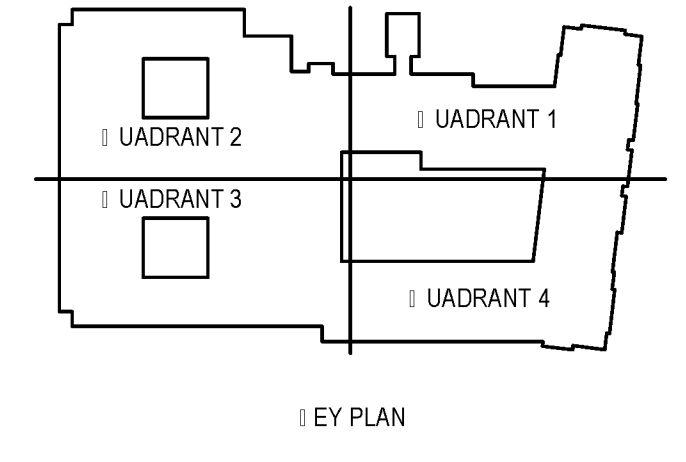
**pi architects**  
 3500 Jefferson St. Suite 303  
 Austin, TX 78731  
 P: (512) 231-1910  
 F: (512) 231-1950  
 www.piarch.com  
 architecture + master  
 interior + landscape  
 architecture  
**PE Services**  
 ENGINEERS FOR THE SOUTH  
 1-800-997-6500  
 www.pe-services.com



**WATERSTONE AT BATON ROUGE  
 ASSISTED LIVING & MEMORY CARE**  
 SIEGEN LANE  
 BATON ROUGE, LA 70810

ISSUE: PERMIT SET

©2015 PI ARCHITECTS, INC.  
REVISIONS:



**CONTRACTOR NOTE**  
 IT IS THE RESPONSIBILITY OF THE CONTRACTOR TO NOTIFY THE ARCHITECT, LANDLORD AND TENANT OF ANY DISCREPANCIES ENCOUNTERED ON THE PLANS OR IN EXISTING SITE CONDITIONS PRIOR TO SUBMISSION OF BID.  
 BIDDERS ARE TO VISIT THE SITE AND FAMILIARIZE THEMSELVES WITH EXISTING CONDITIONS AND SATISFY THEMSELVES AS TO THE NATURE AND SCOPE OF THE WORK. THE BASE BID SHALL REFLECT MODIFICATIONS TO SYSTEMS AND DEVICES AS REQUIRED BY STATE, LOCAL AND FEDERAL CODES. WHETHER INDICATED OR NOT ON CONTRACT DOCUMENTS, THE SUBMISSIONS OF A BID WILL BE EVIDENCE THAT SUCH AN EXAMINATION AND COMPLIANCE WITH GOVERNING CODES/REQUIREMENTS HAS BEEN MADE. LATER CLAIMS FOR LABOR, EQUIPMENT, OR MATERIALS REQUIRED, OR CORRECTIONS ENCOUNTERED WHICH COULD HAVE BEEN FORESEEN HAD AN EXAMINATION AND CODE/REQUIREMENTS REVIEW BEEN MADE, WILL NOT BE ALLOWED.

**MECHANICAL PLAN - ROOF**  
 E2.3.3 | 1/8" = 1'-0"

DATE: 03/31/2016  
 PROJECT NUMBER: PES 15090  
 SHEET TITLE: PO MECHANICAL PLAN - ROOF  
 SHEET: **E2.3.3**