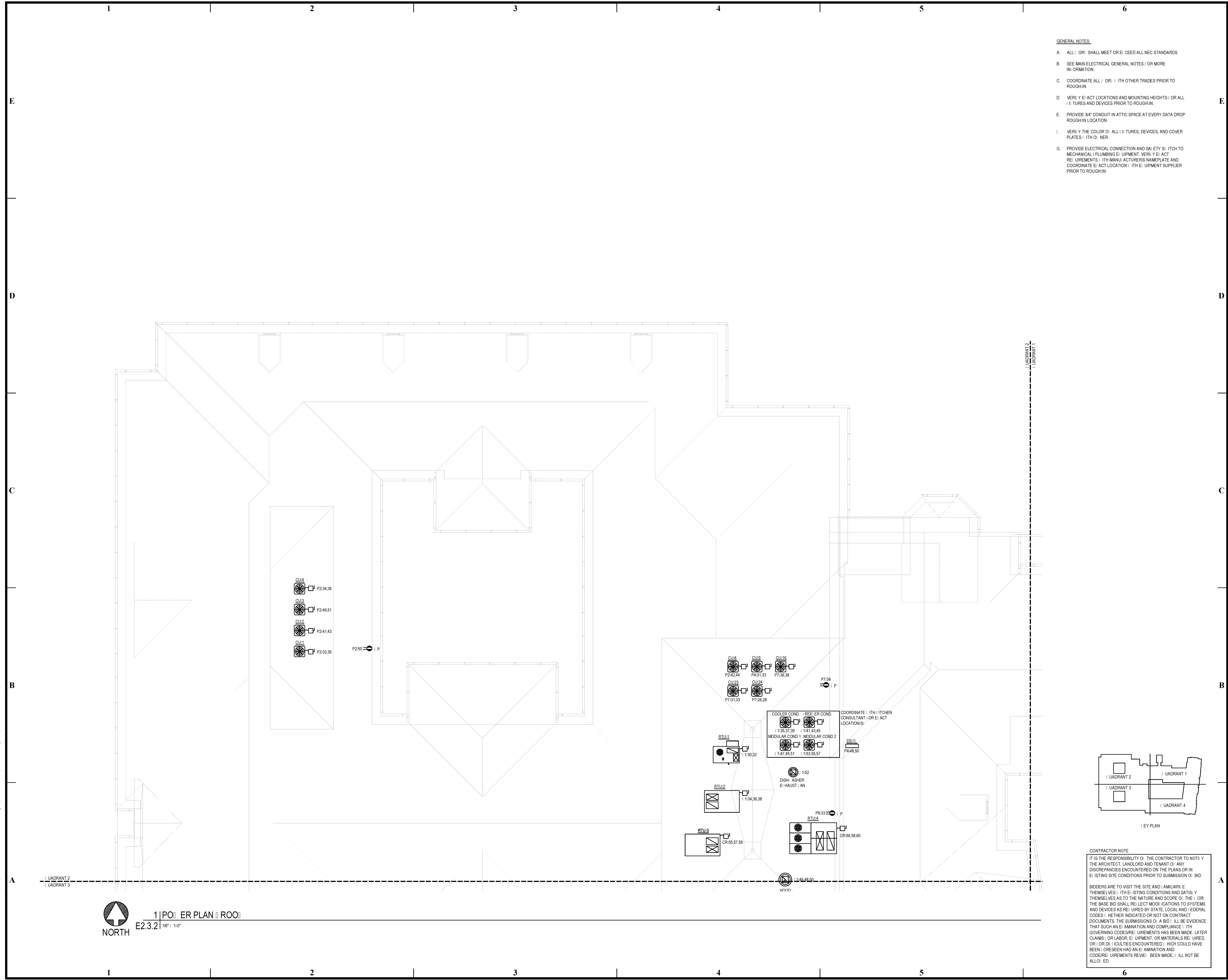


BIM Server: Server\2012 - BIM Server\18.0\14017 Concordia Baton Rouge | Ver: 18.001 | Wednesday, September 02, 2015 | 4:04 PM



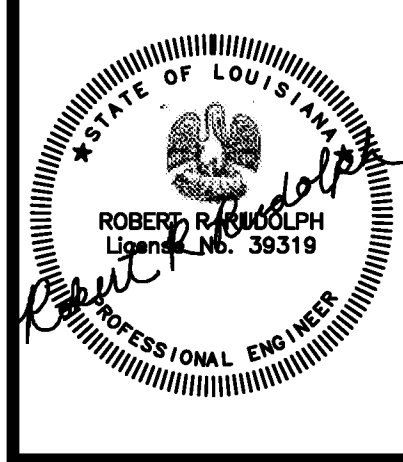
GENERAL NOTES:

- A. ALL WORK SHALL MEET OR EXCEED ALL NEC STANDARDS.
- B. SEE MAIN ELECTRICAL GENERAL NOTES FOR MORE INFORMATION.
- C. COORDINATE ALL WORK WITH OTHER TRADES PRIOR TO ROUGH-IN.
- D. VERIFY ELECTRICAL LOCATIONS AND MOUNTING HEIGHTS OR ALL DEVICES PRIOR TO ROUGH-IN.
- E. PROVIDE 3/4" CONDUIT IN ATTIC SPACE AT EVERY DATA DROP ROUGH-IN LOCATION.
- F. VERIFY THE COLOR OF ALL DEVICES, DEVICES AND COVER PLATES WITH OWNER.
- G. PROVIDE ELECTRICAL CONNECTION AND SAFETY SWITCH TO MECHANICAL / PLUMBING EQUIPMENT. VERIFY ELECTRICAL REQUIREMENTS WITH MANUFACTURER'S NAMEPLATE AND COORDINATE ELECTRICAL LOCATION WITH EQUIPMENT SUPPLIER PRIOR TO ROUGH-IN.

pi architects
 3500 Jefferson St. Suite 303
 Austin, TX 78731
 P: (512) 231-1910
 F: (512) 231-1950
 www.piarich.com

**architecture + master
 interior + landscape
 architecture**
 www.piarich.com

These plans have been properly examined by the undersigned and have determined that they comply with existing local Louisiana codes, and have been properly site adapted to use in this area.



**WATERSTONE AT BATON ROUGE
 ASSISTED LIVING & MEMORY CARE**
 SIEGEN LANE
 BATON ROUGE, LA 70810

ISSUE: PERMIT SET

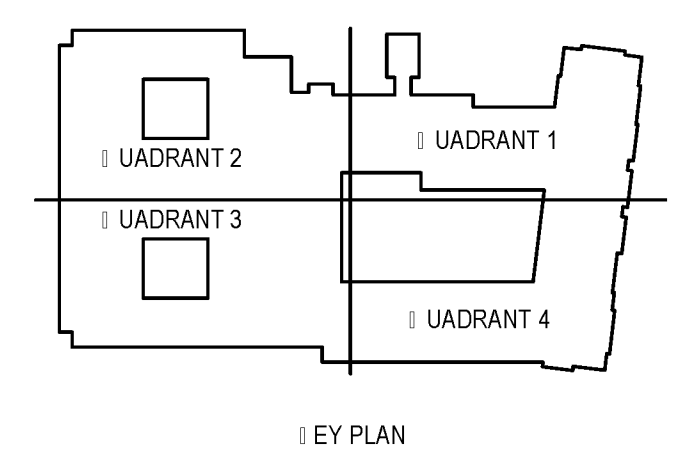
©2015 PI ARCHITECTS, INC.

REVISIONS:

NO.	DATE	DESCRIPTION

DATE: 03/31/2016
 PROJECT NUMBER: PES 15090
 SHEET TITLE: PO ROOF

SHEET: **E2.3.2**



CONTRACTOR NOTE
 IT IS THE RESPONSIBILITY OF THE CONTRACTOR TO NOTIFY THE ARCHITECT, LANDLORD AND TENANT OF ANY DISCREPANCIES ENCOUNTERED ON THE PLANS OR IN EXISTING SITE CONDITIONS PRIOR TO SUBMISSION OF BID.
 BIDDERS ARE TO VISIT THE SITE AND FAMILIARIZE THEMSELVES AS TO THE NATURE AND SCOPE OF THE WORK. THE BASE BID SHALL REFLECT MODIFICATIONS TO SYSTEMS AND DEVICES AS REQUIRED BY STATE, LOCAL AND FEDERAL CODES. WHETHER INDICATED OR NOT ON CONTRACT DOCUMENTS, THE SUBMISSIONS OF A BID SHALL BE EVIDENCE THAT SUCH AN EXAMINATION AND COMPLIANCE WITH GOVERNING CODES/REQUIREMENTS HAS BEEN MADE. LATER CLAIMS OR LABOR, EQUIPMENT, OR MATERIALS REQUIRED, OR CORRECTIONS ENCOUNTERED WHICH COULD HAVE BEEN FORESEEN HAD AN EXAMINATION AND CODE/REQUIREMENTS REVIEW BEEN MADE, WILL NOT BE ALLOWED.