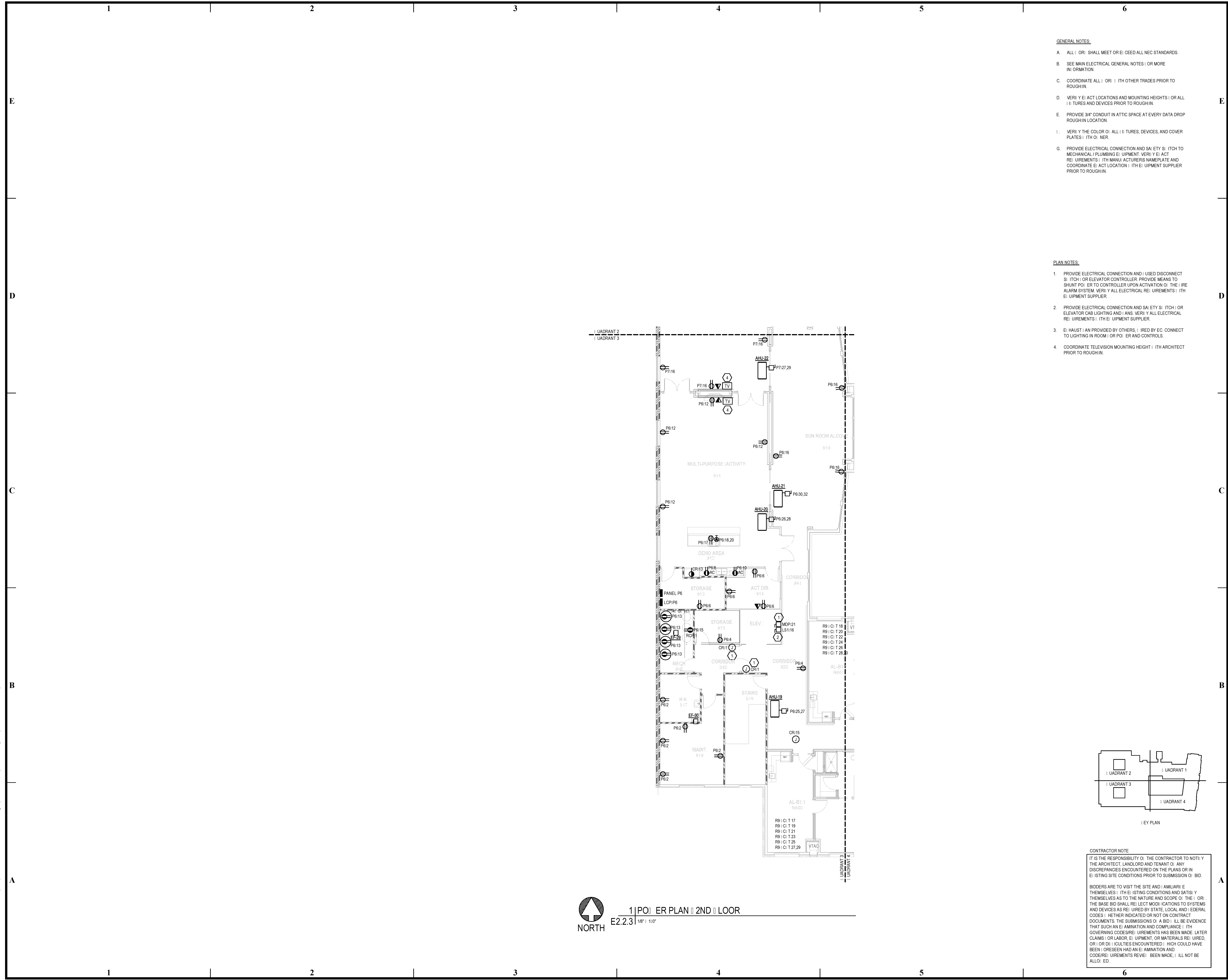


BIM Server: Server2012 - BIM Server (18/07/14)17 Concordia Baton Rouge | Ver: 18.001 | Wednesday, September 02, 2015 | 4:04 PM

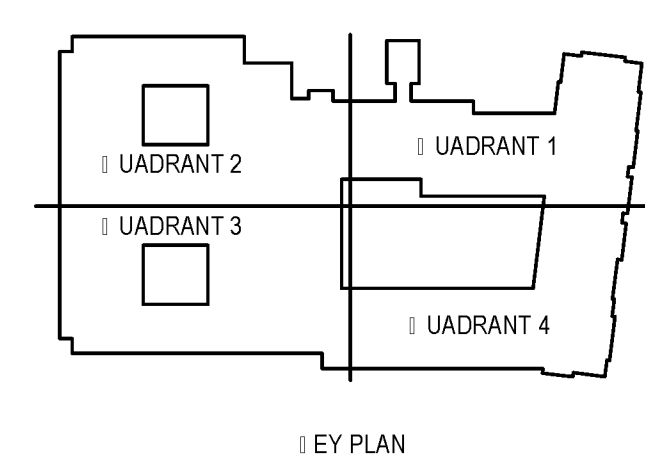


GENERAL NOTES:

- A. ALL WORK SHALL MEET OR EXCEED ALL NEC STANDARDS.
- B. SEE MAIN ELECTRICAL GENERAL NOTES OR MORE INFORMATION.
- C. COORDINATE ALL WORK WITH OTHER TRADES PRIOR TO ROUGH-IN.
- D. VERIFY THE ACT LOCATIONS AND MOUNTING HEIGHTS OR ALL FIXTURES AND DEVICES PRIOR TO ROUGH-IN.
- E. PROVIDE 3/4" CONDUIT IN ATTIC SPACE AT EVERY DATA DROP ROUGH-IN LOCATION.
- F. VERIFY THE COLOR OF ALL FIXTURES, DEVICES, AND COVER PLATES WITH OWNER.
- G. PROVIDE ELECTRICAL CONNECTION AND SAFETY SWITCH TO MECHANICAL / PLUMBING EQUIPMENT. VERIFY THE ELECTRICAL REQUIREMENTS WITH MANUFACTURER'S NAMEPLATE AND COORDINATE THE ACT LOCATION WITH THE EQUIPMENT SUPPLIER PRIOR TO ROUGH-IN.

PLAN NOTES:

- 1. PROVIDE ELECTRICAL CONNECTION AND USED DISCONNECT SWITCH OR ELEVATOR CONTROLLER. PROVIDE MEANS TO SHUNT POWER TO CONTROLLER UPON ACTIVATION OF THE FIRE ALARM SYSTEM. VERIFY ALL ELECTRICAL REQUIREMENTS WITH EQUIPMENT SUPPLIER.
- 2. PROVIDE ELECTRICAL CONNECTION AND SAFETY SWITCH OR ELEVATOR CAB LIGHTING AND SIGNALS. VERIFY ALL ELECTRICAL REQUIREMENTS WITH EQUIPMENT SUPPLIER.
- 3. ELEVATOR HOIST PROVIDED BY OTHERS. WIRING BY EC. CONNECT TO LIGHTING IN ROOM OR POWER AND CONTROLS.
- 4. COORDINATE TELEVISION MOUNTING HEIGHT WITH ARCHITECT PRIOR TO ROUGH-IN.



CONTRACTOR NOTE

IT IS THE RESPONSIBILITY OF THE CONTRACTOR TO NOTIFY THE ARCHITECT, LANDLORD AND TENANT OF ANY DISCREPANCIES ENCOUNTERED ON THE PLANS OR IN EXISTING SITE CONDITIONS PRIOR TO SUBMISSION OF BID.

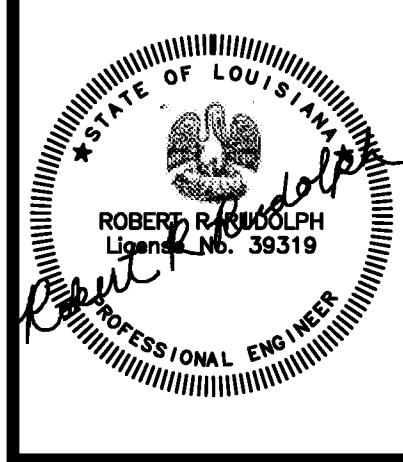
BIDDERS ARE TO VISIT THE SITE AND FAMILIARIZE THEMSELVES WITH EXISTING CONDITIONS AND SATISFY THEMSELVES AS TO THE NATURE AND SCOPE OF THE WORK. THE BASE BID SHALL REFLECT MODIFICATIONS TO SYSTEMS AND DEVICES AS REQUIRED BY STATE, LOCAL AND FEDERAL CODES WHETHER INDICATED OR NOT ON CONTRACT DOCUMENTS. THE SUBMISSION OF A BID SHALL BE EVIDENCE THAT SUCH AN EXAMINATION AND COMPLIANCE WITH GOVERNING CODES/REQUIREMENTS HAS BEEN MADE. LATER CLAIMS OF LABOR, EQUIPMENT, OR MATERIALS REQUIRED, OR DISCREPANCIES ENCOUNTERED WHICH COULD HAVE BEEN FORESEEN HAD AN EXAMINATION AND CODE/REQUIREMENTS REVIEW BEEN MADE, WILL NOT BE ALLOWED.

pi architects
 3500 Jefferson St. Suite 303
 Austin, TX 78731
 P: (512) 231-1910
 F: (512) 231-1950
 www.piarch.com

architecture + master
 interior + landscape
 architecture

PE Services
 ENGINEERS FOR THE SOUTH
 1-800-997-6500
 www.pe-services.com

These plans have been properly examined by the undersigned and have determined that they comply with existing local Louisiana codes, and have been properly site adapted to use in this area.



**WATERSTONE AT BATON ROUGE
 ASSISTED LIVING & MEMORY CARE**

SIEGEN LANE
 BATON ROUGE, LA 70810

ISSUE: PERMIT SET

©2015 PI ARCHITECTS, INC.
REVISIONS:

DATE: 03/31/2016
PROJECT NUMBER: PES 15090
SHEET TITLE:

PO: ER PLAN
2ND FLOOR

SHEET:
E2.2.3