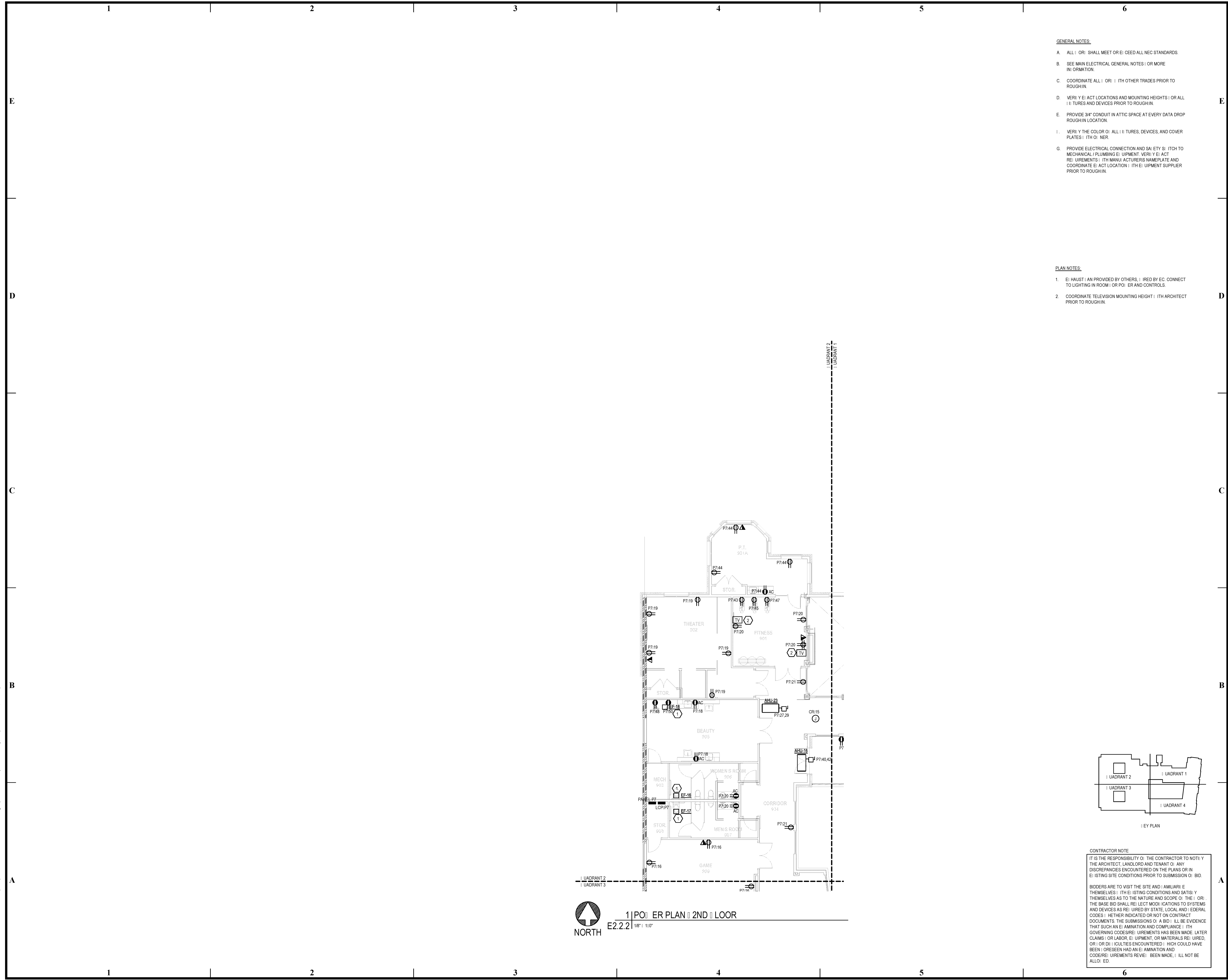


BIM Server: Server2012 - BIM Server (18/07/2017 Concordia Baton Rouge) | Ver: 18.001 | Wednesday, September 02, 2015 | 4:04 PM

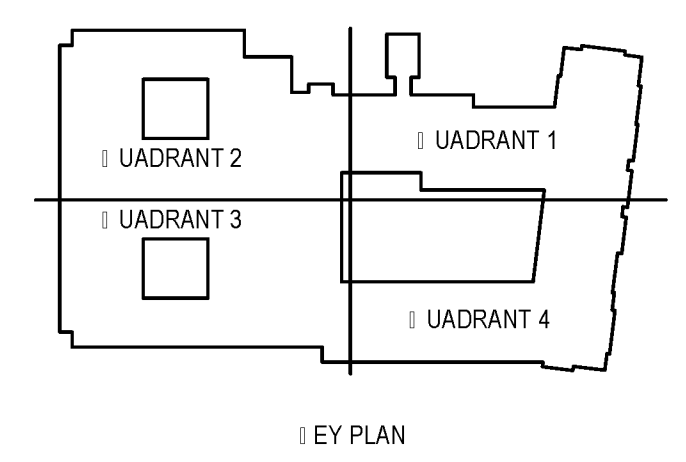


**GENERAL NOTES:**

- A. ALL WORK SHALL MEET OR EXCEED ALL NEC STANDARDS.
- B. SEE MAIN ELECTRICAL GENERAL NOTES FOR MORE INFORMATION.
- C. COORDINATE ALL WORK WITH OTHER TRADES PRIOR TO ROUGH-IN.
- D. VERIFY ELECTRICAL LOCATIONS AND MOUNTING HEIGHTS FOR ALL DEVICES AND DEVICES PRIOR TO ROUGH-IN.
- E. PROVIDE 3/4" CONDUIT IN ATTIC SPACE AT EVERY DATA DROP ROUGH-IN LOCATION.
- F. VERIFY THE COLOR OF ALL DEVICES, DEVICES AND COVER PLATES WITH OWNER.
- G. PROVIDE ELECTRICAL CONNECTION AND SAFETY SWITCH TO MECHANICAL / PLUMBING EQUIPMENT. VERIFY ELECTRICAL REQUIREMENTS WITH MANUFACTURER'S NAMEPLATE AND COORDINATE ELECTRICAL LOCATION WITH EQUIPMENT SUPPLIER PRIOR TO ROUGH-IN.

**PLAN NOTES:**

- 1. ELECTRICAL HAUSTRIAN PROVIDED BY OTHERS, INDICATED BY EC. CONNECT TO LIGHTING IN ROOM OR POWER AND CONTROLS.
- 2. COORDINATE TELEVISION MOUNTING HEIGHT WITH ARCHITECT PRIOR TO ROUGH-IN.



**CONTRACTOR NOTE**

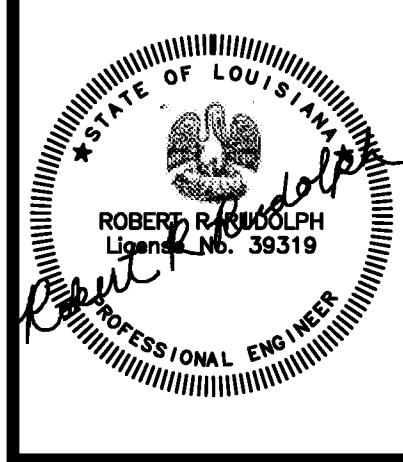
IT IS THE RESPONSIBILITY OF THE CONTRACTOR TO NOTIFY THE ARCHITECT, LANDLORD AND TENANT OF ANY DISCREPANCIES ENCOUNTERED ON THE PLANS OR IN EXISTING SITE CONDITIONS PRIOR TO SUBMISSION OF BID.

BIDDERS ARE TO VISIT THE SITE AND FAMILIARIZE THEMSELVES WITH EXISTING CONDITIONS AND SATISFY THEMSELVES AS TO THE NATURE AND SCOPE OF THE WORK. THE BASE BID SHALL REFLECT MODIFICATIONS TO SYSTEMS AND DEVICES AS REQUIRED BY STATE, LOCAL AND FEDERAL CODES WHETHER INDICATED OR NOT ON CONTRACT DOCUMENTS. THE SUBMISSION OF A BID SHALL BE EVIDENCE THAT SUCH AN EXAMINATION AND COMPLIANCE WITH GOVERNING CODES/REGULATIONS HAS BEEN MADE. LATER CLAIMS OF LABOR, EQUIPMENT, OR MATERIALS REQUIRED, OR QUALITIES ENCOUNTERED WHICH COULD HAVE BEEN FORESEEN HAD AN EXAMINATION AND CODE/REGULATIONS REVIEW BEEN MADE, WILL NOT BE ALLOWED.

**pi architects**  
 3500 Jefferson St. Suite 303  
 Austin, TX 78731  
 P: (512) 231-1910  
 F: (512) 231-1950  
 www.piarch.com

**PE Services**  
 ENGINEERS FOR THE SOUTH  
 1-800-997-6500  
 www.pe-services.com

These plans have been properly examined by the undersigned and have determined that they comply with existing local Louisiana codes, and have been properly site adapted to use in this area.



**WATERSTONE AT BATON ROUGE  
 ASSISTED LIVING & MEMORY CARE**

SIEGEN LANE  
 BATON ROUGE, LA 70810

ISSUE: PERMIT SET

©2015 PI ARCHITECTS, INC.

REVISIONS:

DATE: 03/31/2016  
 PROJECT NUMBER: PES 15090  
 SHEET TITLE:

PO ELECTRICAL PLAN 2ND FLOOR

SHEET:

**E2.2.2**