

WATERSTONE AT BATON ROUGE ASSISTED LIVING & MEMORY CARE
 SIEGEN LANE
 BATON ROUGE, LA 70810

ISSUE: PERMIT SET

©2015 PI ARCHITECTS, INC.

REVISIONS:

DATE: 03/31/2016
 PROJECT NUMBER: PES 15090
 SHEET TITLE:

PO: ER PLAN
 2ND LOOR

SHEET:

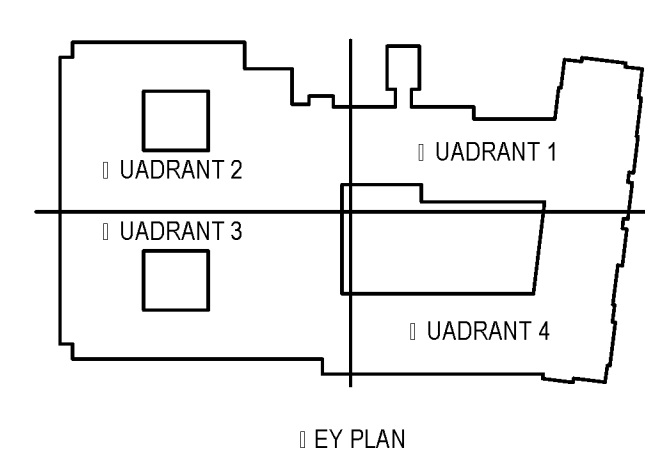
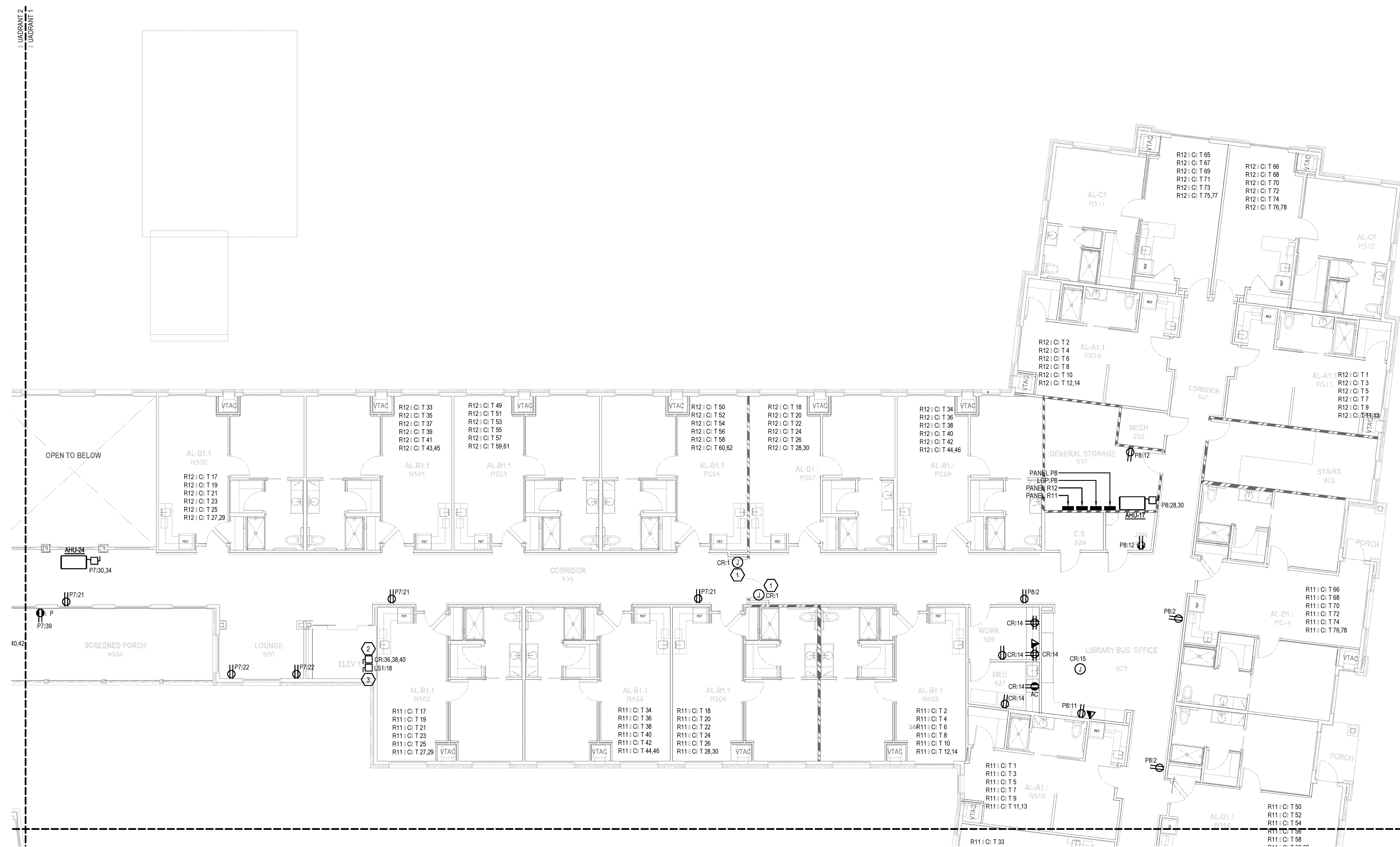
E2.2.1

GENERAL NOTES:

- A. ALL I OR SHALL MEET OR EXCEED ALL NEC STANDARDS.
- B. SEE MAIN ELECTRICAL GENERAL NOTES I OR MORE INFORMATION.
- C. COORDINATE ALL I OR WITH OTHER TRADES PRIOR TO ROUGHIN.
- D. VERIFY THE LOCATION AND MOUNTING HEIGHTS I OR ALL I IURES AND DEVICES PRIOR TO ROUGHIN.
- E. PROVIDE 3/4" CONDUIT IN ATTIC SPACE AT EVERY DATA DROP ROUGHIN LOCATION.
- F. VERIFY THE COLOR OF ALL I IURES, DEVICES AND COVER PLATES I ITH THE OWNER.
- G. PROVIDE ELECTRICAL CONNECTION AND SAFETY SWITCH TO MECHANICAL / PLUMBING EQUIPMENT. VERIFY THE ELECTRICAL REQUIREMENTS I ITH MANUFACTURER'S NAMEPLATE AND COORDINATE THE LOCATION I ITH THE EQUIPMENT SUPPLIER PRIOR TO ROUGHIN.

PLAN NOTES:

1. PROVIDE JUNCTION BOX I ITH 120V CIRCUIT I OR CONNECTION TO MAGNETIC DOOR HOLD/OPEN DEVICES. COORDINATE I ITH FIRE ALARM DESIGN. SEE E3 SERIES DRAWINGS I OR MORE INFORMATION.
2. PROVIDE ELECTRICAL CONNECTION AND USED DISCONNECT SWITCH I OR ELEVATOR CONTROLLER. PROVIDE MEANS TO SHUNT POWER TO CONTROLLER UPON ACTIVATION OF THE FIRE ALARM SYSTEM. VERIFY ALL ELECTRICAL REQUIREMENTS I ITH THE EQUIPMENT SUPPLIER.
3. PROVIDE ELECTRICAL CONNECTION AND SAFETY SWITCH I OR ELEVATOR CAB LIGHTING AND SIGNALS. VERIFY ALL ELECTRICAL REQUIREMENTS I ITH THE EQUIPMENT SUPPLIER.
4. ELEVATOR CANS PROVIDED BY OTHERS, I IRED BY EC. CONNECT TO LIGHTING IN ROOM I OR POWER AND CONTROLS.
5. COORDINATE TELEVISION MOUNTING HEIGHT I ITH ARCHITECT PRIOR TO ROUGHIN.



CONTRACTOR NOTE:
 IT IS THE RESPONSIBILITY OF THE CONTRACTOR TO NOTIFY THE ARCHITECT, LANDLORD AND TENANT OF ANY DISCREPANCIES ENCOUNTERED ON THE PLANS OR IN EXISTING SITE CONDITIONS PRIOR TO SUBMISSION OF BID.
 BIDDERS ARE TO VISIT THE SITE AND FAMILIARIZE THEMSELVES WITH EXISTING CONDITIONS AND SATISFY THEMSELVES AS TO THE NATURE AND SCOPE OF THE WORK. THE BASE BID SHALL REFLECT MODIFICATIONS TO SYSTEMS AND DEVICES AS REQUIRED BY STATE, LOCAL AND FEDERAL CODES, WHETHER INDICATED OR NOT ON CONTRACT DOCUMENTS. THE SUBMISSION OF A BID SHALL BE EVIDENCE THAT SUCH AN EXAMINATION AND COMPLIANCE WITH GOVERNING CODES/REQUIREMENTS HAS BEEN MADE. LATER CLAIMS OF LABOR, EQUIPMENT, OR MATERIALS REQUIRED, OR QUALITIES ENCOUNTERED WHICH COULD HAVE BEEN FORESEEN HAD AN EXAMINATION AND CODE/REQUIREMENTS REVIEW BEEN MADE, WILL NOT BE ALLOWED.

1 | PO | ER PLAN | 2ND | LOOR
 E2.2.1 | 1/8" = 1'-0"



BIM Server: Server2012 - BIM Server (18/07/14)17 Concordia Baton Rouge | Ver: 18.001 | Wednesday, September 02, 2015 | 4:04 PM