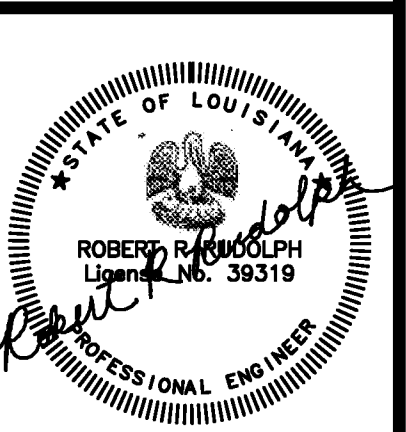
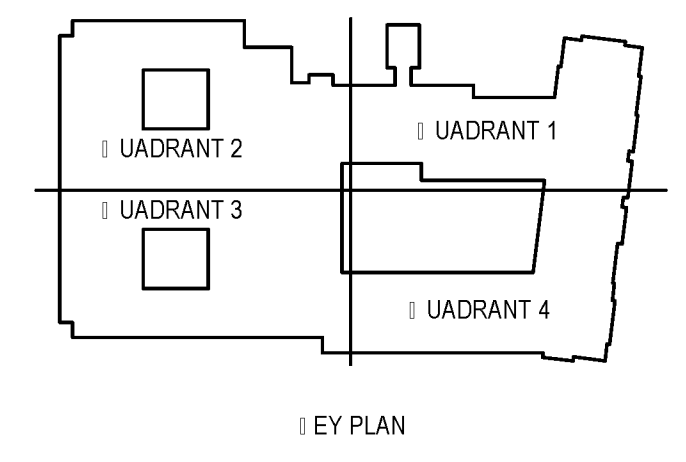
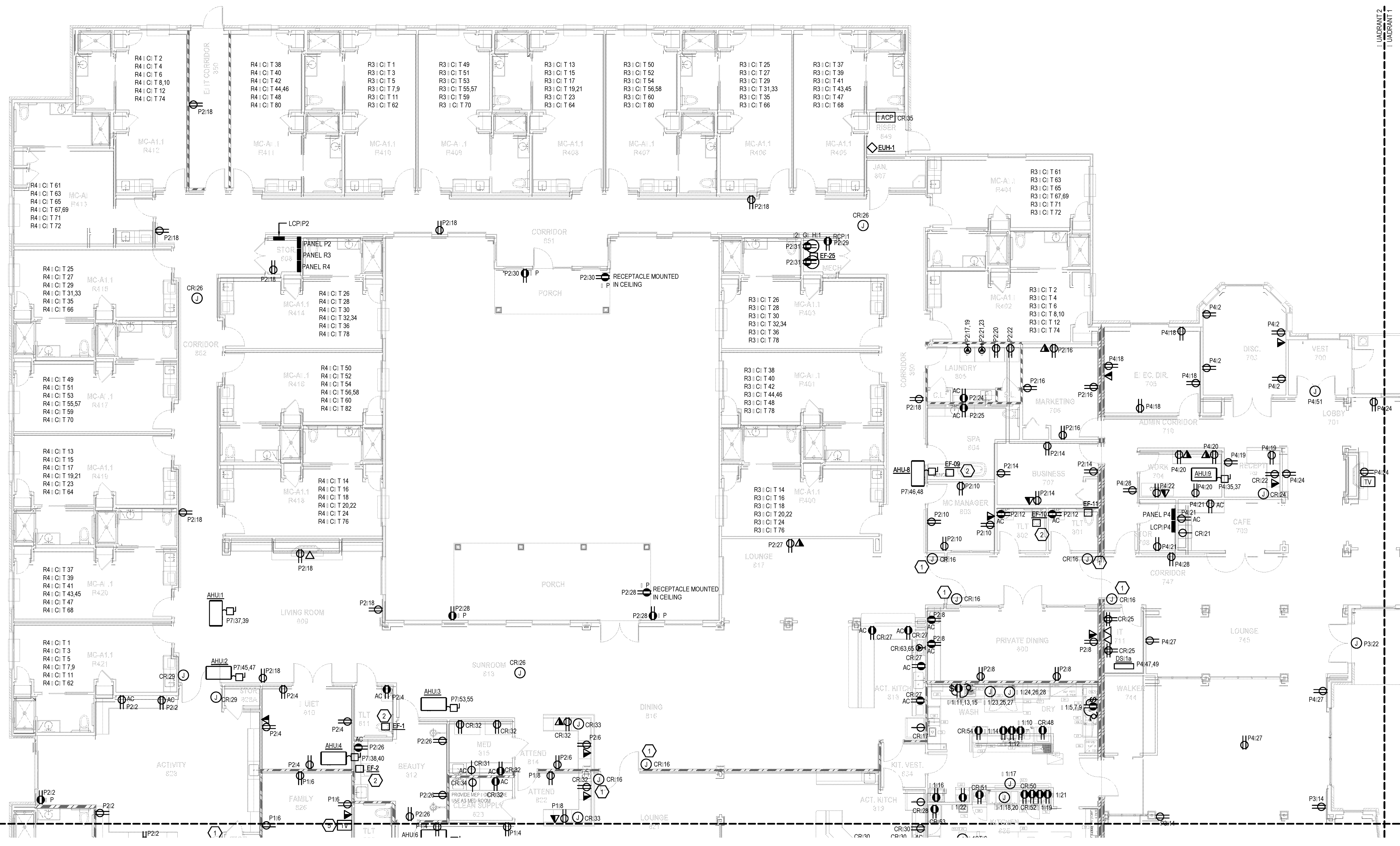


These plans have been properly examined by the undersigned. I have determined that they comply with existing local Louisiana codes, and have been properly adapted to use in this area.



- GENERAL NOTES:**
- ALL I/O SHALL MEET OR EXCEED ALL NEC STANDARDS.
 - SEE MAIN ELECTRICAL GENERAL NOTES FOR MORE INFORMATION.
 - COORDINATE ALL I/O WITH OTHER TRADES PRIOR TO ROUGH-IN.
 - VERIFY EJECTOR LOCATIONS AND MOUNTING HEIGHTS OR ALL EJECTORS AND DEVICES PRIOR TO ROUGH-IN.
 - PROVIDE 3/4" CONDUIT IN ATTIC SPACE AT EVERY DATA DROP ROUGH-IN LOCATION.
 - VERIFY THE COLOR OF ALL EJECTORS, DEVICES, AND COVER PLATES WITH OWNER.
 - PROVIDE ELECTRICAL CONNECTION AND SAFETY SWITCH TO MECHANICAL/PLUMBING EQUIPMENT. VERIFY EJECTOR REQUIREMENTS WITH MANUFACTURER'S NAMEPLATE AND COORDINATE EJECTOR LOCATION WITH EQUIPMENT SUPPLIER PRIOR TO ROUGH-IN.

- PLAN NOTES:**
- PROVIDE JUNCTION BOX WITH 120V CIRCUIT OR CONNECTION TO MAGNETIC DOOR HOLD-OPEN DEVICES. COORDINATE WITH FIRE ALARM DESIGN. SEE E3 SERIES DRAWINGS FOR MORE INFORMATION.
 - EJECTOR ANCHOR PROVIDED BY OTHERS. WIRE BY EJECTOR CONNECT TO LIGHTING IN ROOM OR POWER AND CONTROLS.
 - COORDINATE TELEVISION MOUNTING HEIGHT WITH ARCHITECT PRIOR TO ROUGH-IN.



CONTRACTOR NOTE

IT IS THE RESPONSIBILITY OF THE CONTRACTOR TO NOTIFY THE ARCHITECT, LANDLORD AND TENANT OF ANY DISCREPANCIES ENCOUNTERED ON THE PLANS OR IN EXISTING SITE CONDITIONS PRIOR TO SUBMISSION OF BID.

BIDDERS ARE TO VISIT THE SITE AND FAMILIARIZE THEMSELVES AS TO THE NATURE AND SCOPE OF THE WORK. THE BASE BID SHALL REFLECT MODIFICATIONS TO SYSTEMS AND DEVICES AS REQUIRED BY STATE, LOCAL AND FEDERAL CODES. WHETHER INDICATED OR NOT ON CONTRACT DOCUMENTS. THE SUBMISSIONS OF A BID WILL BE EVIDENCE THAT SUCH AN EXAMINATION AND COMPLIANCE WITH GOVERNING CODES/REQUIREMENTS HAS BEEN MADE. LATER CLAIMS OF LABOR, EQUIPMENT, OR MATERIALS REQUIRED, OR QUALITIES ENCOUNTERED WHICH COULD HAVE BEEN FORESEEN HAD AN EXAMINATION AND CODE/REQUIREMENTS REVIEW BEEN MADE, WILL NOT BE ALLOWED.

1 | POWER PLAN | 1ST FLOOR
 E2.1.2 | 1/8" = 1'-0"



BIM Server: Save/2012 - BIM Server (18/07/2017) Concordia Baton Rouge | Ver: 18.001 | Wednesday, September 02, 2015 | 4:04 PM

**WATERSTONE AT BATON ROUGE
 ASSISTED LIVING & MEMORY CARE**
 SIEGEN LANE
 BATON ROUGE, LA 70810

ISSUE: PERMIT SET

©2015 PI ARCHITECTS, INC.
 REVISIONS:

DATE: 03/31/2016
 PROJECT NUMBER: PES 15090
 SHEET TITLE:

POWER PLAN | 1ST FLOOR

SHEET:
E2.1.2