

GENERAL NOTES:

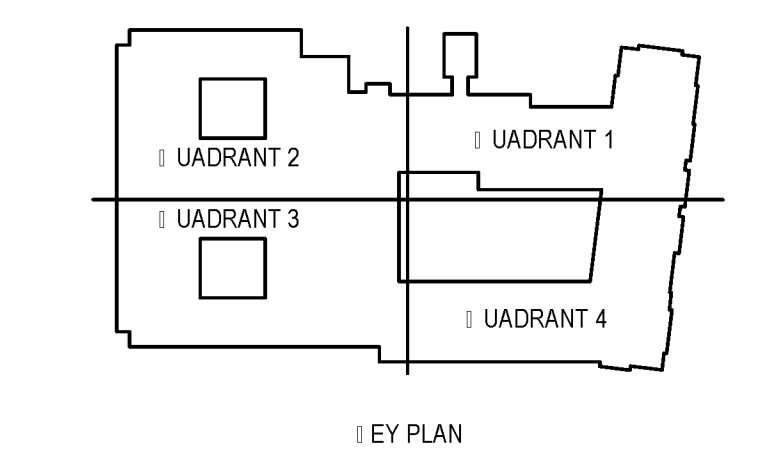
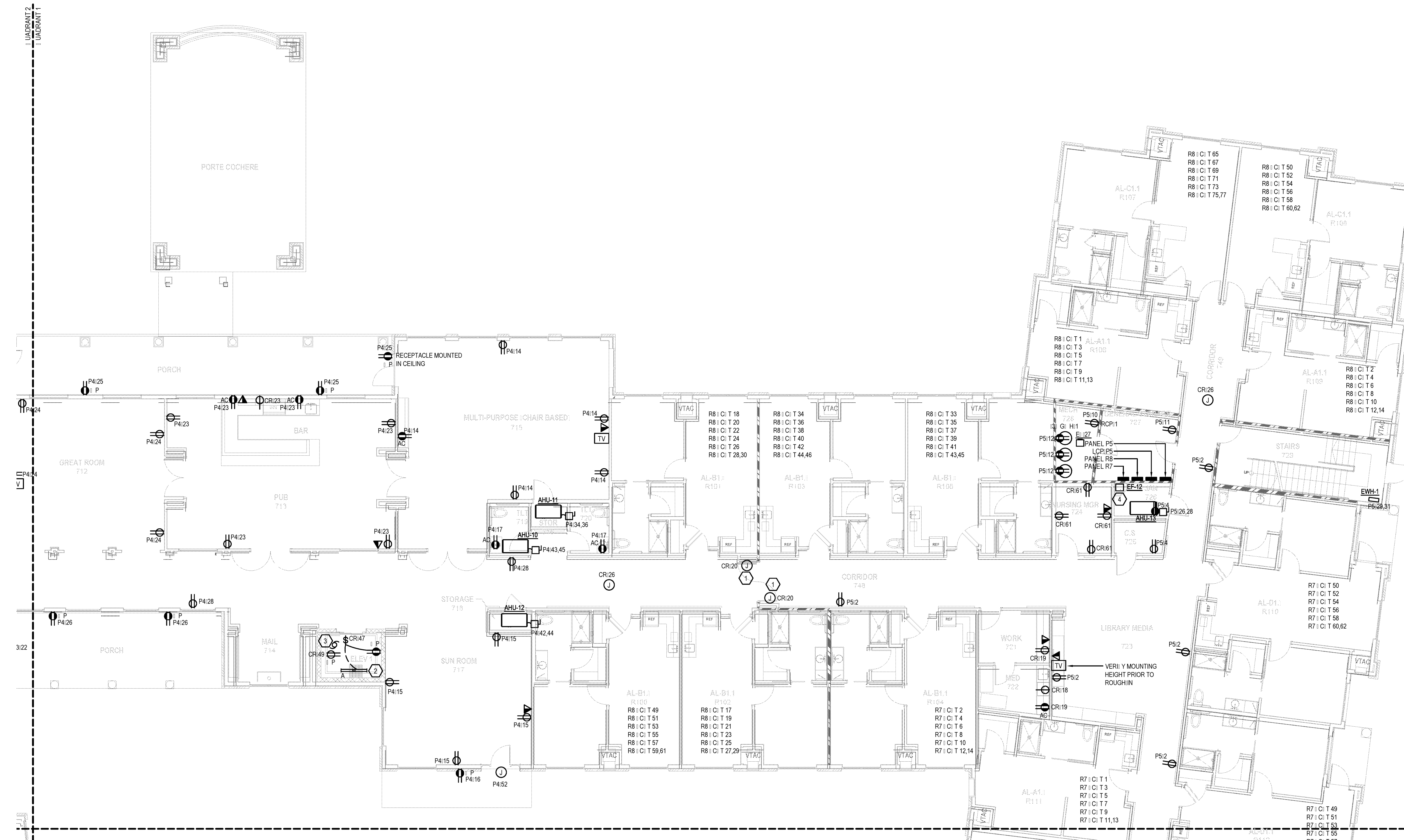
- A. ALL I/O SHALL MEET OR EXCEED ALL NEC STANDARDS.
- B. SEE MAIN ELECTRICAL GENERAL NOTES FOR MORE INFORMATION.
- C. COORDINATE ALL I/O WITH OTHER TRADES PRIOR TO ROUGH-IN.
- D. VERIFY EJECTOR LOCATIONS AND MOUNTING HEIGHTS OR ALL EJECTORS AND DEVICES PRIOR TO ROUGH-IN.
- E. PROVIDE 3/4" CONDUIT IN ATTIC SPACE AT EVERY DATA DROP ROUGH-IN LOCATION.
- F. VERIFY THE COLOR OF ALL EJECTORS, DEVICES, AND COVER PLATES WITH OWNER.
- G. PROVIDE ELECTRICAL CONNECTION AND SAFETY SWITCH TO MECHANICAL/PLUMBING EQUIPMENT. VERIFY EJECTOR REQUIREMENTS WITH MANUFACTURER'S NAMEPLATE AND COORDINATE EJECTOR LOCATION WITH EQUIPMENT SUPPLIER PRIOR TO ROUGH-IN.

PLAN NOTES:

1. PROVIDE JUNCTION BOX WITH 120V CIRCUIT OR CONNECTION TO MAGNETIC DOOR HOLD-OPEN DEVICES. COORDINATE WITH FIRE ALARM DESIGN. SEE E3 SERIES DRAWINGS FOR MORE INFORMATION.
2. PROVIDE LITHONIA DM-232/120VOLT/GEBO10S LUMINAIRE AND CIRCUIT SERVICE RECEPTACLE. ALL MOUNT IN ELEVATOR SHAFT AT BOTTOM AND AT TOP PER MANUFACTURER'S RECOMMENDATIONS. LUMINAIRE MUST NOT BE CONNECTED ON LOAD SIDE OF RECEPTACLE.
3. PROVIDE SIMPLE RECEPTACLE OR ELEVATOR SUMP PUMP. VERIFY ALL ELECTRICAL REQUIREMENTS AND EJECTOR LOCATION WITH EQUIPMENT SUPPLIER PRIOR TO ROUGH-IN.
4. EJECTOR HAUSTING PROVIDED BY OTHERS. RED BY EC. CONNECT TO LIGHTING IN ROOM OR PROVIDE AND CONTROLS.

CONTRACTOR NOTE:

IT IS THE RESPONSIBILITY OF THE CONTRACTOR TO NOTIFY THE ARCHITECT, LANDLORD AND TENANT OF ANY DISCREPANCIES ENCOUNTERED ON THE PLANS OR IN EXISTING SITE CONDITIONS PRIOR TO SUBMISSION OF BID. BIDDERS ARE TO VISIT THE SITE AND FAMILIARIZE THEMSELVES WITH THE EXISTING CONDITIONS AND SATISFY THEMSELVES AS TO THE NATURE AND SCOPE OF THE WORK. THE BASE BID SHALL REFLECT MODIFICATIONS TO SYSTEMS AND DEVICES AS REQUIRED BY STATE, LOCAL AND FEDERAL CODES. WHETHER INDICATED OR NOT ON CONTRACT DOCUMENTS, THE SUBMISSION OF A BID SHALL BE EVIDENCE THAT SUCH AN EXAMINATION AND COMPLIANCE WITH GOVERNING CODES/REGULATIONS HAS BEEN MADE. LATER CLAIMS OR LABOR, EQUIPMENT, OR MATERIALS REQUIRED, OR CORRECTIONS ENCOUNTERED WHICH COULD HAVE BEEN FORESEEN HAD AN EXAMINATION AND CODE/REGULATIONS REVIEW BEEN MADE, SHALL NOT BE ALLOWED.



1 | PO | ER PLAN | 1ST FLOOR
 E2.1.1 | 18" x 11" | NORTH

BIM Server: Server2012 - BIM Server (18/01/14)17 Concordia Baton Rouge | Ver: 18.001 | Wednesday, September 02, 2015 | 4:04 PM