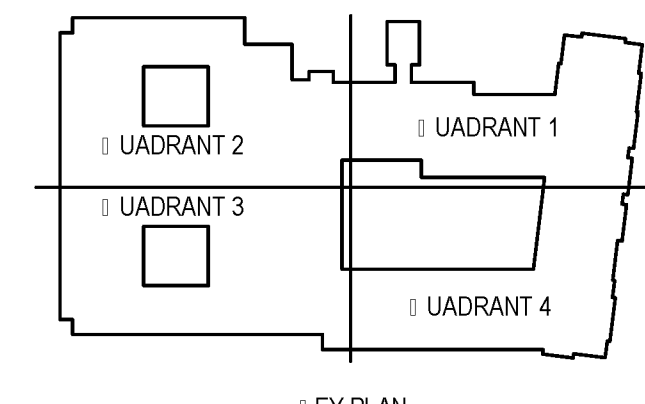
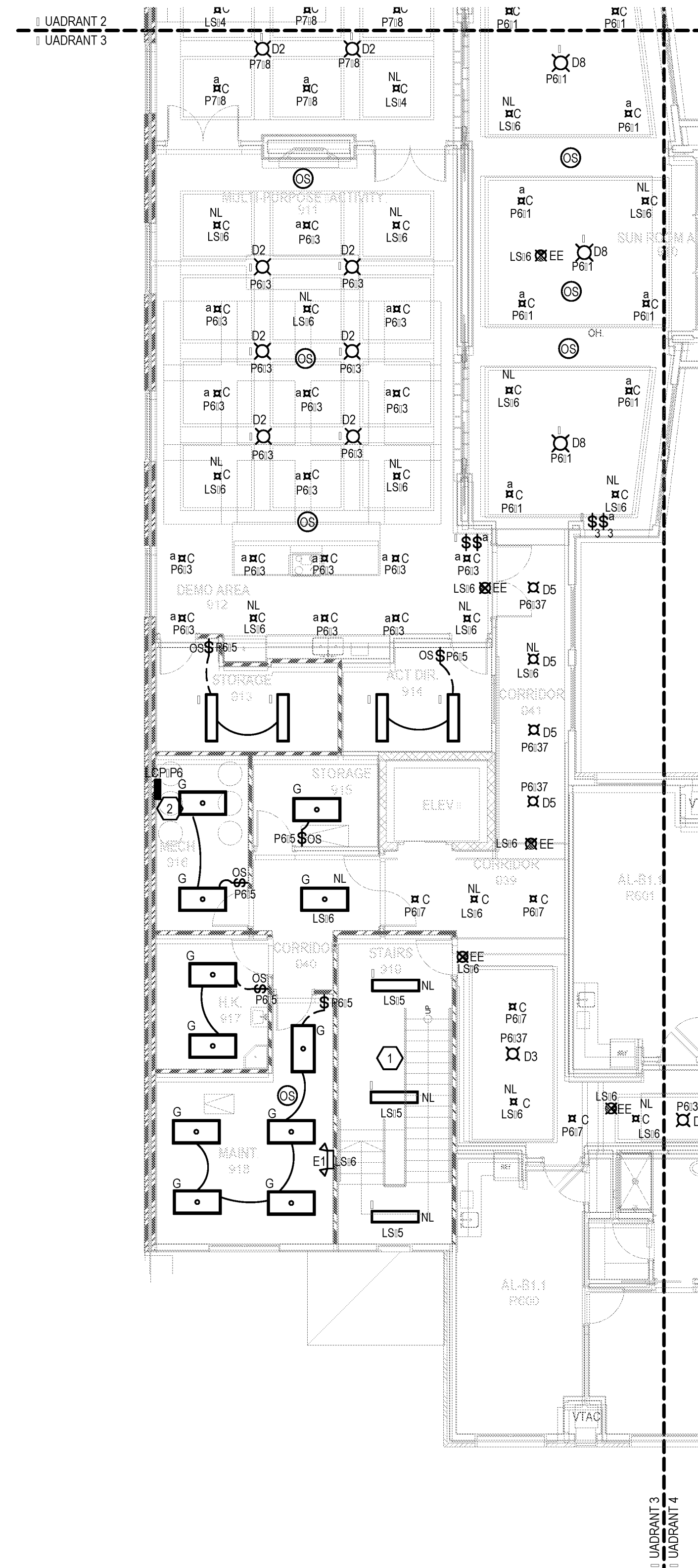


PLAN NOTES:

- CONNECT ALL LIGHTING IN THIS STAIRWAY TO ONE CIRCUIT AS INDICATED ON FIRST FLOOR PLAN.
- PROVIDE LIGHTING CONTROL PANEL BY GREENGATE (OR EQUIVALENT) TO CONTROL ALL LIGHTING AND TENANT SIGNAGE. SEE DETAIL #29 THIS SHEET E1.1.1 OR MORE INFORMATION.

GENERAL NOTES:

- ALL WORK SHALL MEET OR EXCEED ALL NEC STANDARDS.
- SEE MAIN ELECTRICAL GENERAL NOTES FOR MORE INFORMATION.
- COORDINATE ALL WORK WITH OTHER TRADES PRIOR TO ROUGH-IN.
- VERIFY ELECTRICAL LOCATIONS AND MOUNTING HEIGHTS FOR ALL FIXTURES AND DEVICES PRIOR TO ROUGH-IN.
- ALL EMERGENCY LIGHTING SHALL BE PROVIDED WITH AN UNBUNDLED CONDUCTOR ON THE INDICATED CIRCUIT.
- ALL FIXTURES SHALL BE USED FOR EMERGENCY EGRESS LIGHTING AND ARE CIRCUITED TO THE UL LISTED SAFETY PANEL ON THE GENERATOR OR SHALL COME EQUIPPED WITH AN EMERGENCY BATTERY OR BATTERY PACK.
- ALL FIXTURES WITH A "NL" TAG SHALL BE CONSIDERED A NIGHT LIGHT AND BE CONNECTED AHEAD OF ALL CONTROLS.
- VERIFY THE COLOR OF ALL FIXTURES, DEVICES, AND COVER PLATES WITH OWNER.
- ALL LIGHT FIXTURES INSTALLED IN CLOSETS SHALL CONFORM TO NEC ARTICLE 410.8.
- FOR ALL OCCUPANCY SENSORS, PROVIDE SWITCHING AND ALL OTHER REQUIRED HARDWARE WHERE NECESSARY. COORDINATE ALL SETTINGS WITH OWNER PRIOR TO ROUGH-IN.

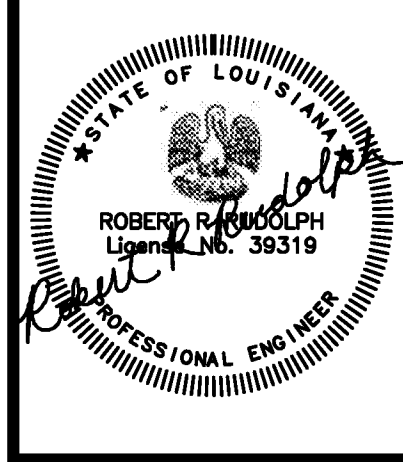


1 | LIGHTING PLAN | 2ND | LOOR
E1.2.3 1/8" = 1'-0"

CONTRACTOR NOTE
IT IS THE RESPONSIBILITY OF THE CONTRACTOR TO NOTIFY THE ARCHITECT, LANDLORD AND TENANT OF ANY DISCREPANCIES ENCOUNTERED ON THE PLANS OR IN EXISTING SITE CONDITIONS PRIOR TO SUBMISSION OF BID.
BIDDERS ARE TO VISIT THE SITE AND FAMILIARIZE THEMSELVES WITH EXISTING CONDITIONS AND SATISFY THEMSELVES AS TO THE NATURE AND SCOPE OF THE WORK. THE BASE BID SHALL REFLECT MODIFICATIONS TO SYSTEMS AND DEVICES AS REQUIRED BY STATE, LOCAL AND FEDERAL CODES. WHETHER INDICATED OR NOT ON CONTRACT DOCUMENTS, THE SUBMISSIONS OF A BIDDER SHALL BE EVIDENCE THAT SUCH AN EXAMINATION AND COMPLIANCE WITH GOVERNING CODES/REGULATIONS HAS BEEN MADE. LATER CLAIMS OR LABOR EQUIPMENT OR MATERIALS REQUIRED, OR OTHER DISCREPANCIES ENCOUNTERED WHICH COULD HAVE BEEN FORESEEN HAD AN EXAMINATION AND CODES/REGULATIONS REVIEW BEEN MADE, WILL NOT BE ALLOWED.

pi architects
3500 Jefferson St. Suite 303
Austin, TX 78731
P: (512) 231-1910
F: (512) 231-1950
www.piarch.com

architecture + master
interior + landscape
architecture
PE Services
ELECTRICAL FOR YOUR BUSINESS
1-800-997-0500
www.pe-services.com
These plans have been properly examined by the undersigned. I have determined that they comply with existing local Louisiana codes, and have been properly site adapted to use in this area.



WATERSTONE AT BATON ROUGE ASSISTED LIVING & MEMORY CARE
SIEGEN LANE
BATON ROUGE, LA 70810

ISSUE: PERMIT SET

©2015 PI ARCHITECTS, INC.

REVISIONS:

DATE: 03/31/2016
PROJECT NUMBER: PES 15090
SHEET TITLE: LIGHTING PLAN | 2ND | LOOR

SHEET: E1.2.3

BIM Server: Server2012 - BIM Server (18/07/14017 Concordia Baton Rouge) [Ver: 18.001] Wednesday, September 02, 2015 | 4:04 PM