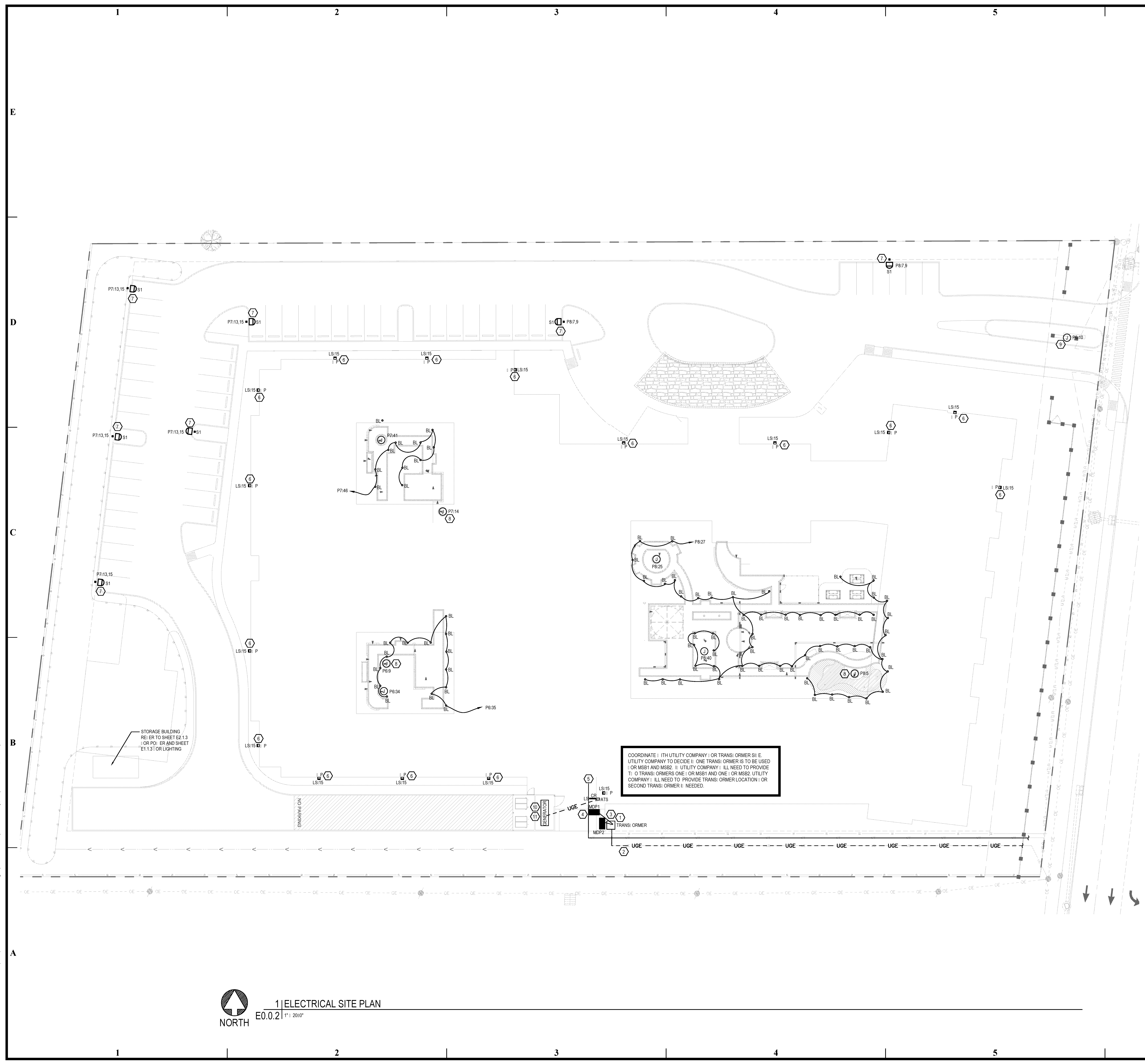


BIM Server: Saved: 2012 - BIM Server (18 01/4017 Concordia Baton Rouge) Ver: 18.0011 Wednesday, September 02, 2015 14:04 PM



COORDINATE WITH UTILITY COMPANY OR TRANSFORMER SITE. UTILITY COMPANY TO DECIDE IF ONE TRANSFORMER IS TO BE USED OR MSB1 AND MSB2. IF UTILITY COMPANY WILL NEED TO PROVIDE TRANSFORMER ONE OR MSB1 AND ONE OR MSB2, UTILITY COMPANY WILL NEED TO PROVIDE TRANSFORMER LOCATION OR SECOND TRANSFORMER IS NEEDED.

STORAGE BUILDING REFER TO SHEET E2.13 OR POWER AND SHEET E1.13 FOR LIGHTING

- GENERAL NOTES:**
- A. ALL WORK SHALL MEET OR EXCEED ALL NEC STANDARDS.
 - B. SEE MAIN ELECTRICAL GENERAL NOTES FOR MORE INFORMATION.
 - C. COORDINATE ALL WORK WITH OTHER TRADES PRIOR TO ROUGH-IN.
 - D. VERIFY ELECTRICAL LOCATIONS AND MOUNTING HEIGHTS OR ALL TYPES AND DEVICES PRIOR TO ROUGH-IN.
 - E. VERIFY THE COLOR OF ALL TYPES, DEVICES, AND COVER PLATES WITH OWNER.
 - F. PROVIDE PHOTOCELL CONTROL FOR ALL EXTERIOR LIGHTING. COORDINATE ALL SETTINGS WITH OWNER.
 - G. ELECTRICAL CONTRACTOR SHALL CLOSELY COORDINATE THE ELECTRICAL LOCATIONS OF ALL UTILITY COMPANY CONNECTION POINTS AND REQUIREMENTS. VERIFY ALL REQUIREMENTS WITH LOCAL UTILITY COMPANIES.

- PLAN NOTES:**
1. PROPOSED LOCATION OF UTILITY TRANSFORMER. ELECTRICAL CONTRACTOR SHALL PROVIDE CONCRETE PAD PER LOCAL UTILITY COMPANY SPECIFICATIONS. PROTECTION BOLLARDS SHALL BE BY GENERAL CONTRACTOR. FINAL LOCATION SHALL BE AS DETERMINED BY LOCAL UTILITY COMPANY.
 2. PROVIDE 2" CONDUITS TO UTILITY EASEMENT OR PRIMARY ELECTRIC POINT OF ENTRANCE. COORDINATE ELECTRICAL ROUTING WITH UTILITY AND VERIFY ELECTRICAL DISTANCE IN FIELD.
 3. PROVIDE CONDUIT AND SECONDARY SERVICE CONDUCTORS FOR ELECTRICAL SERVICE. SEE RISER DIAGRAM FOR CONDUIT AND FEEDER SIZES.
 4. PROPOSED LOCATION OF ELECTRICAL SERVICE EQUIPMENT. COORDINATE ELECTRICAL LOCATION PRIOR TO ROUGH-IN.
 5. PROVIDE TWO EMPTY 4" CONDUITS AND ONE EMPTY 2" CONDUIT WITH PULL STRING OR INCOMING TELECOMMUNICATIONS SERVICES. FIELD VERIFY CONDUIT BUILDING ENTRANCE LOCATION AND CONDUIT ROUTING WITHIN BUILDING PRIOR TO BID. COORDINATE ALL REQUIREMENTS WITH OWNER, ARCHITECT AND SERVING UTILITY.
 6. EXTERIOR LIGHTING AND SIGNAGE CIRCUITS SHALL BE CONTROLLED VIA CONTACTOR/PHOTOCELL. PROVIDE LIGHTING CONTRACTOR WITH NUMBER OF POLES REQUIRED. LOCATE ADJACENT TO RESPECTIVE HOUSE PANEL.
 7. PROVIDE CONCRETE POLE BASE PER DETAIL #1 ON SHEET E5.3. FIELD VERIFY ELECTRICAL LOCATION PRIOR TO ROUGH-IN.
 8. PROVIDE JUNCTION BOX AND 120V CONNECTION OR POINT OF ENTRY TO MAIN ENTRY MONUMENT SIGN. COORDINATE ELECTRICAL LOCATION AND REQUIREMENTS WITH ARCHITECT PRIOR TO ROUGH-IN.
 9. PROVIDE JUNCTION BOX AND 120V CONNECTION OR POINT OF ENTRY TO MAIN ENTRY MONUMENT SIGN. COORDINATE ELECTRICAL LOCATION AND REQUIREMENTS WITH ARCHITECT PRIOR TO ROUGH-IN.
 10. PROVIDE EMERGENCY SHUT OFF BUTTON OR GENERATOR WITHIN 15' OF GENERATOR.
 11. PROVIDE RECEPTACLE AND TASI LIGHT EQUAL TO HUBBELL TYPE V151 WITH 150' A21 LAMP AND VCG151 REGUARD AT GENERATOR.

CONTRACTOR NOTE

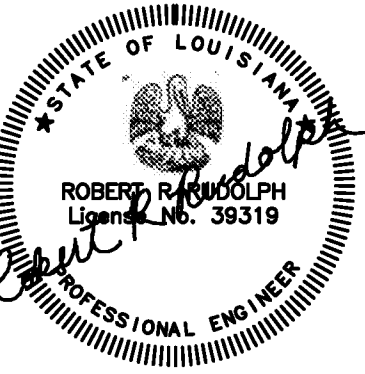
IT IS THE RESPONSIBILITY OF THE CONTRACTOR TO NOTIFY THE ARCHITECT, LANDLORD AND TENANT OF ANY DISCREPANCIES ENCOUNTERED ON THE PLANS OR IN EXISTING SITE CONDITIONS PRIOR TO SUBMISSION OF BID.

BIDDERS ARE TO VISIT THE SITE AND FAMILIARIZE THEMSELVES WITH EXISTING CONDITIONS AND SATISFY THEMSELVES AS TO THE NATURE AND SCOPE OF THE WORK. THE BASE BID SHALL REFLECT MODIFICATIONS TO SYSTEMS AND DEVICES AS REQUIRED BY STATE, LOCAL AND FEDERAL CODES. WHETHER INDICATED OR NOT ON CONTRACT DOCUMENTS. THE SUBMISSIONS OF A BID WILL BE EVIDENCE THAT SUCH AN EXAMINATION AND COMPLIANCE WITH GOVERNING CODES/REQUIREMENTS HAS BEEN MADE. LATER CLAIMS OR LABOR EQUIPMENT OR MATERIALS REQUIRED, OR OTHER DIFFICULTIES ENCOUNTERED WHICH COULD HAVE BEEN FORESEEN HAD AN EXAMINATION AND CODES/REQUIREMENTS REVIEW BEEN MADE, WILL NOT BE ALLOWED.

ELECTRICAL SITE PLAN
 E0.0.2 11/1/2010
 NORTH



pi architects
 3500 Jefferson St. Suite 303
 Austin, TX 78731
 P: (512) 231-1910
 F: (512) 231-1950
 www.piarch.com



ROBERT M. GIBSON
 License No. 39319
 PROFESSIONAL ENGINEER

**WATERSTONE AT BATON ROUGE
 ASSISTED LIVING & MEMORY CARE**

SIEGEN LANE
 BATON ROUGE, LA 70810

ISSUE: PERMIT SET

©2015 PI ARCHITECTS, INC.

REVISIONS:

DATE: 03/31/2016
 PROJECT NUMBER: PES 15090
 SHEET TITLE: ELECTRICAL SITE PLAN
 SHEET: E0.0.2