



**WATERSTONE AT BATON ROUGE  
 ASSISTED LIVING & MEMORY CARE**  
 SIEGEN LANE  
 BATON ROUGE, LA 70810

ISSUE: PERMIT SET

©2016 PI ARCHITECTS, INC.

REVISIONS:

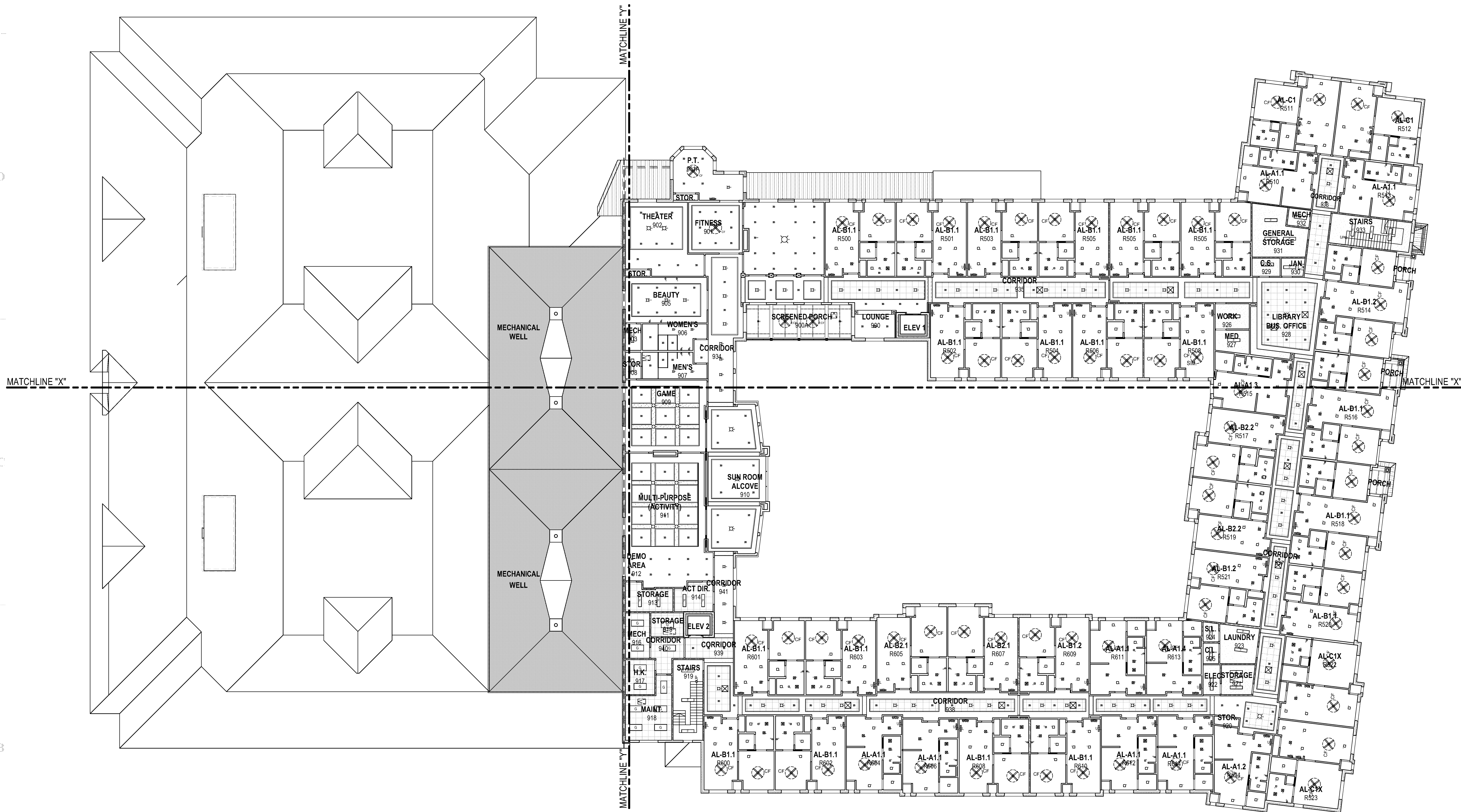
DATE: 03/31/2016  
 PROJECT NUMBER: 14017  
 SHEET TITLE: OVERALL SECOND FLOOR REFLECTED CEILING PLAN  
 SHEET:

**A9.2**

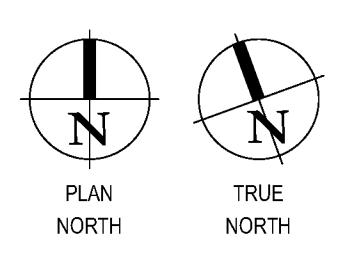
- RCP GENERAL NOTES**
1. ALL CEILINGS TO BE 9'-0" A.F.F. U.N.O.
  2. ALL RECESSED LIGHTING IN RATED CEILING ASSEMBLY TO HAVE GYPSUM BOARD ENCLOSURE PER UL RATED CEILING ASSEMBLY. REF: DETAIL DA9A5
  3. ENSURE THE INSTALLATION OF SHATTERPROOF LENSES ON THE DOWN LIGHTS LOCATED IN ALL SHOWERS.
  4. CENTER VANITY FIXTURE ON SINK. RE: INTERIOR ELEVATIONS

- RCP KEYED NOTES**
- 1 20" X 30" 60 MIN. RATED ATTIC ACCESS HATCH.
  - 2 48" X 22" 60 MIN. RATED ATTIC ACCESS HATCH.
  - 3 DECORATIVE BEAM, TYP.: REF: B4IA9.5
  - 4 FRAMING/STRUCTURAL SUPPORT FOR KITCHEN VENTING HOOD. REF: STRUCT AND MECH.
  - 5 KITCHEN VENT HOOD.
  - 6 1 HR RATED ROOF ACCESS HATCH.
  - 7 (PWC-1) PAINTED WOOD CROWN MOLDING. RE: INTERIOR FINISH SCHEDULE & LEGEND

- RCP SYMBOLS LEGEND**
- Decorative wall sconce, RE: ELECTRICAL FOR LUMINAIRE SCHEDULE
  - Recessed can light, RE: ELECTRICAL FOR LUMINAIRE SCHEDULE
  - Recessed wall-washer, RE: ELECTRICAL FOR LUMINAIRE SCHEDULE
  - LED surface light, RE: ELECTRICAL FOR LUMINAIRE SCHEDULE
  - Recessed heat lamp on timer, RE: ELECTRICAL FOR LUMINAIRE SCHEDULE
  - Decorative light fixture, RE: ELECTRICAL FOR LUMINAIRE SCHEDULE
  - Under cabinet light, RE: ELECTRICAL FOR LUMINAIRE SCHEDULE
  - 1 X 4 FLUORESCENT SURFACE-MOUNT LIGHT FIXTURE, RE: ELECTRICAL FOR LUMINAIRE SCHEDULE
  - Ceiling fan, RE: ELECTRICAL FOR LUMINAIRE SCHEDULE
  - Exhaust fan
  - Diffuser
  - 20" X 30" 1 HR. RATED ATTIC ACCESS PANEL
  - 22" X 48" 1 HR. RATED RETRACTABLE ATTIC ACCESS PANEL
  - Expansion joint, RE: DETAIL DA9A5
  - Wood beam, RE: DETAIL
  - Gypsum furrdown, RE: REFLECTED CEILING PLAN FOR CEILING HEIGHTS
  - 1 HR. RATED CEILING ASSEMBLY, 2 LAYERS 5/8" TYPE "X" GYPSUM BOARD
  - 24" X 24" ACOUSTICAL CEILING TILE, RE: SPECIFICATIONS



**A1 OVERALL SECOND FLOOR RCP**  
 SCALE: 1/16" = 1'-0"



BIM Server: SERVER2015 - BIM Server 19/14017 Concordia Baton Rouge | Ver. 19.001 | Friday, April 01, 2016 | 12:53 AM