



**WATERSTONE AT BATON ROUGE
 ASSISTED LIVING & MEMORY CARE**
 SIEGEN LANE
 BATON ROUGE, LA 70810

ISSUE: PERMIT SET

©2016 PI ARCHITECTS, INC.

REVISIONS:

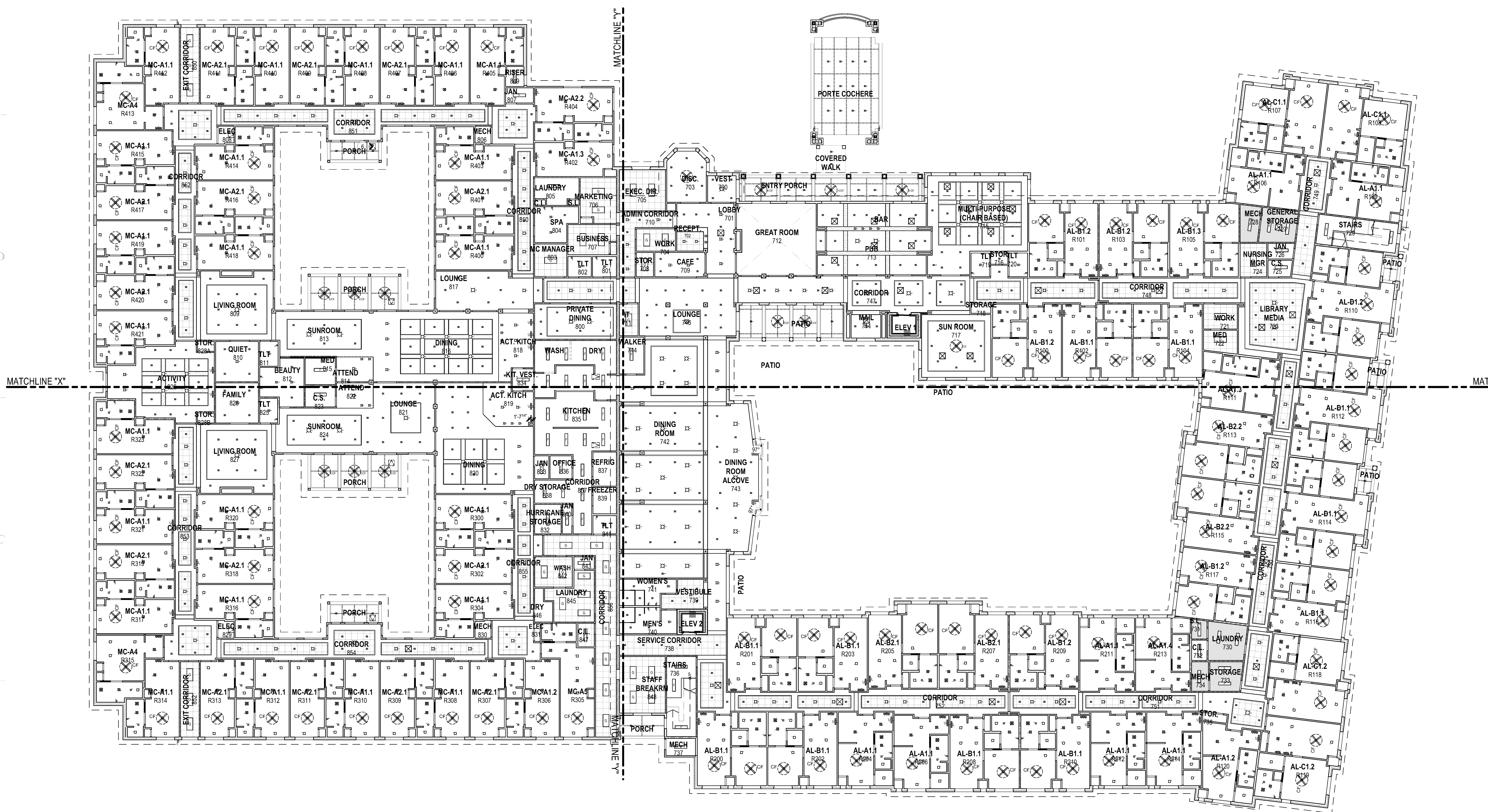
DATE: 03/31/2016
 PROJECT NUMBER: 14017
 SHEET TITLE: OVERALL FIRST FLOOR REFLECTED CEILING PLAN

SHEET: A9.1

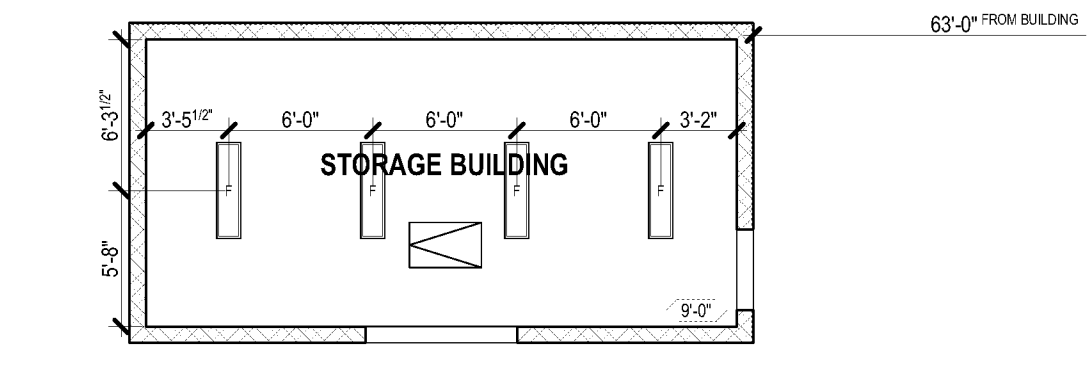
- RCP GENERAL NOTES**
1. ALL CEILINGS TO BE 9'-0" AFF U.N.O.
 2. ALL RECESSED LIGHTING IN RATED CEILING ASSEMBLY TO HAVE GYPSUM BOARD ENCLOSURE PER UL RATED CEILING ASSEMBLY. REF: DETAIL D5A9.5
 3. ENSURE THE INSTALLATION OF SHATTERPROOF LENSES ON THE DOWN LIGHTS LOCATED IN ALL SHOWERS.
 4. CENTER VANITY FIXTURE ON SINK. RE: INTERIOR ELEVATIONS

- RCP KEYED NOTES**
1. 20" X 30" 60 MIN. RATED ATTIC ACCESS HATCH.
 2. 48" X 22" 60 MIN. RATED ATTIC ACCESS HATCH.
 3. DECORATIVE BEAM, TYP.: REF: B4A9.5
 4. FRAMING/STRUCTURAL SUPPORT FOR KITCHEN VENTING HOOD. REF: STRUCT AND MECH.
 5. KITCHEN VENT HOOD.
 6. 1 HR RATED ROOF ACCESS HATCH.
 7. (PWC-1) PAINTED WOOD CROWN MOLDING. RE: INTERIOR FINISH SCHEDULE & LEGEND

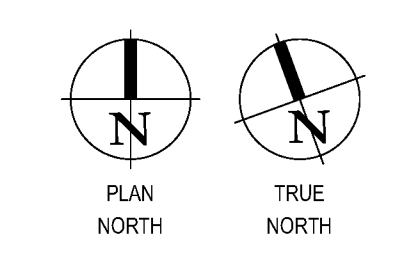
- RCP SYMBOLS LEGEND**
- ☐+ DECORATIVE WALL SCONCE. RE: ELECTRICAL FOR LUMINAIRE SCHEDULE
 - ☐ RECESSED CAN LIGHT. RE: ELECTRICAL FOR LUMINAIRE SCHEDULE
 - ☐- RECESSED WALL WASHER. RE: ELECTRICAL FOR LUMINAIRE SCHEDULE
 - ☐ LED SURFACE LIGHT. RE: ELECTRICAL FOR LUMINAIRE SCHEDULE
 - ☐- RECESSED HEAT LAMP ON TIMER. RE: ELECTRICAL FOR LUMINAIRE SCHEDULE
 - ☐ DECORATIVE LIGHT FIXTURE. RE: ELECTRICAL FOR LUMINAIRE SCHEDULE
 - ☐ UNDER CABINET LIGHT. RE: ELECTRICAL FOR LUMINAIRE SCHEDULE
 - ☐ 1 X 4 FLUORESCENT SURFACE-MOUNT LIGHT FIXTURE. RE: ELECTRICAL FOR LUMINAIRE SCHEDULE
 - ☐ CEILING FAN. RE: ELECTRICAL FOR LUMINAIRE SCHEDULE
 - ☐ EXHAUST FAN
 - ☐ DIFFUSER
 - ☐ 20" X 30" 1 HR. RATED ATTIC ACCESS PANEL
 - ☐ 22" X 48" 1 HR. RATED RETRACTABLE ATTIC ACCESS PANEL
 - ☐ EXPANSION JOINT. RE: DETAIL D4A9.5
 - ☐ WOOD BEAM. RE: DETAIL
 - ☐ GYPSUM FURROWDOWN. RE: REFLECTED CEILING PLAN FOR CEILING HEIGHTS
 - ☐ 1 HR. RATED CEILING ASSEMBLY. 2 LAYERS 5/8" TYPE "X" GYPSUM BOARD
 - ☐ 24" X 24" ACOUSTICAL CEILING TILE. RE: SPECIFICATIONS



B1 OVERALL FIRST FLOOR RCP
 SCALE: 1/16" = 1'-0"



A1 STORAGE BUILDING ENLARGED RCP
 SCALE: 1/8" = 1'-0"



BIM Server: SERVER2015 - BIM Server 19/14017 Concordia Baton Rouge | Ver. 19.001 | Friday, April 01, 2016 | 12:52 AM