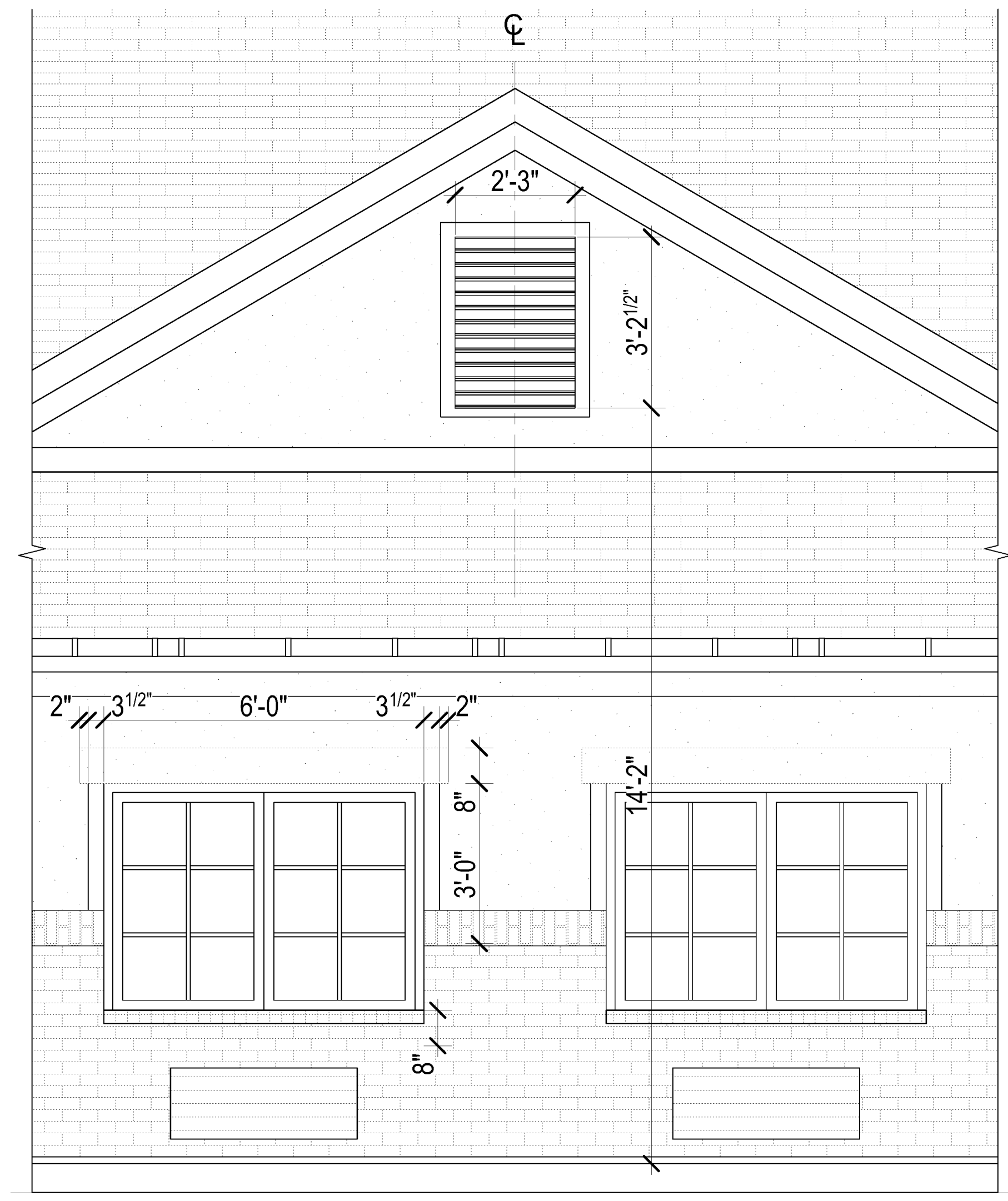
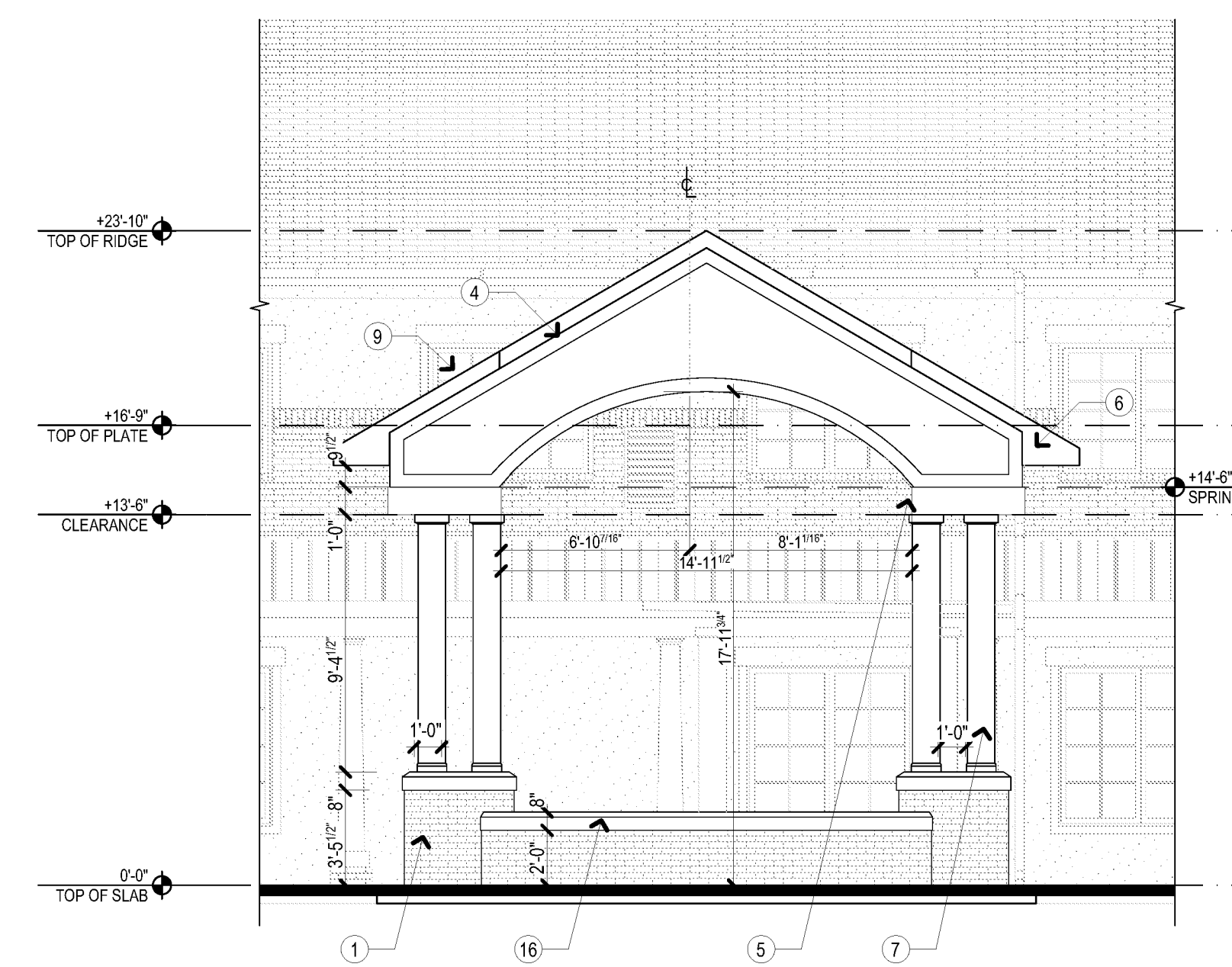


BIM Server: SERVER2015 - BIM Server 19/14017 Concordia Baton Rouge | Ver. 19.001 | Friday, April 01, 2016 | 12:50 AM



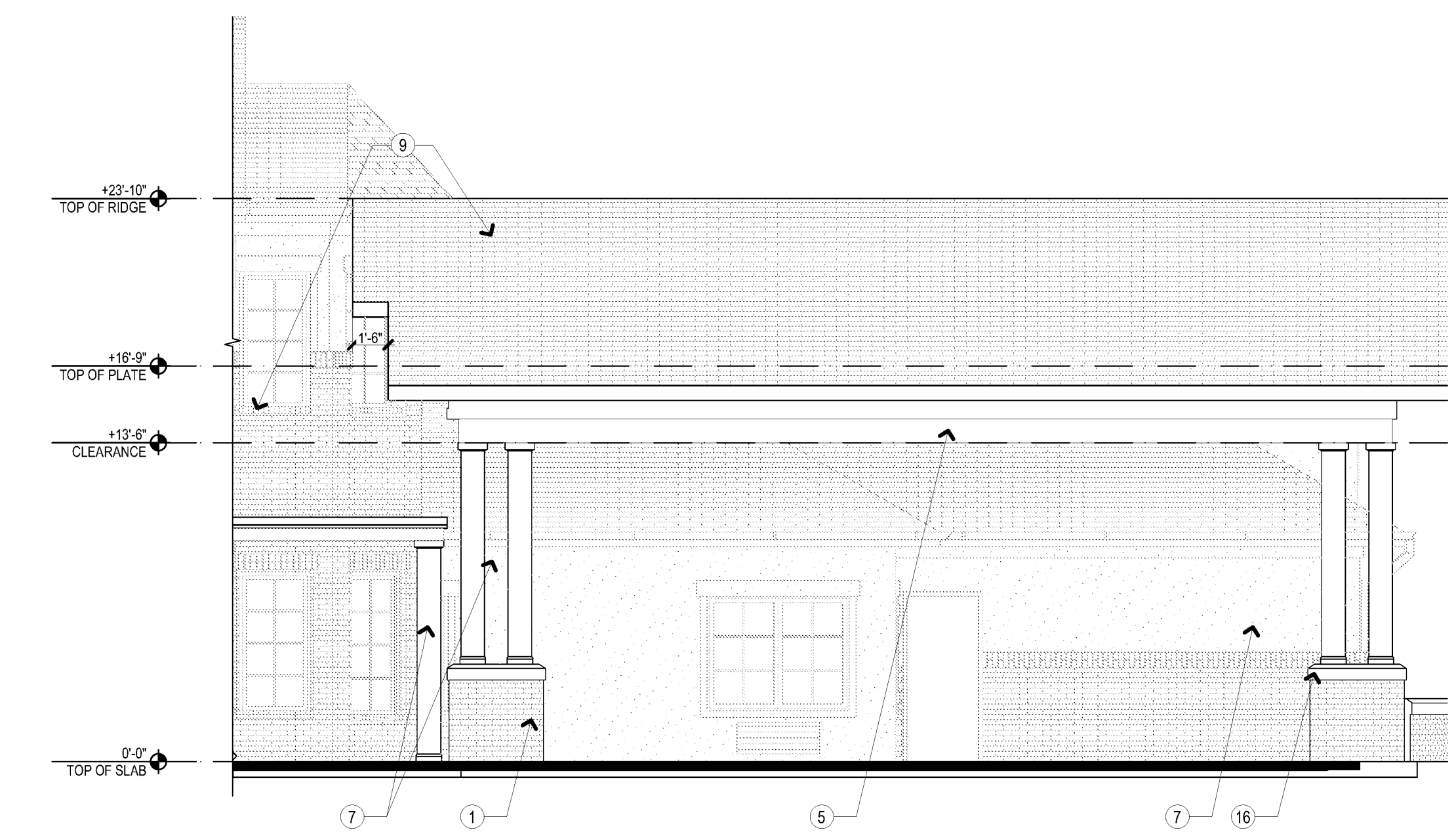
A1 DECORATIVE LOUVER

 SCALE: 1/2" = 1'-0"



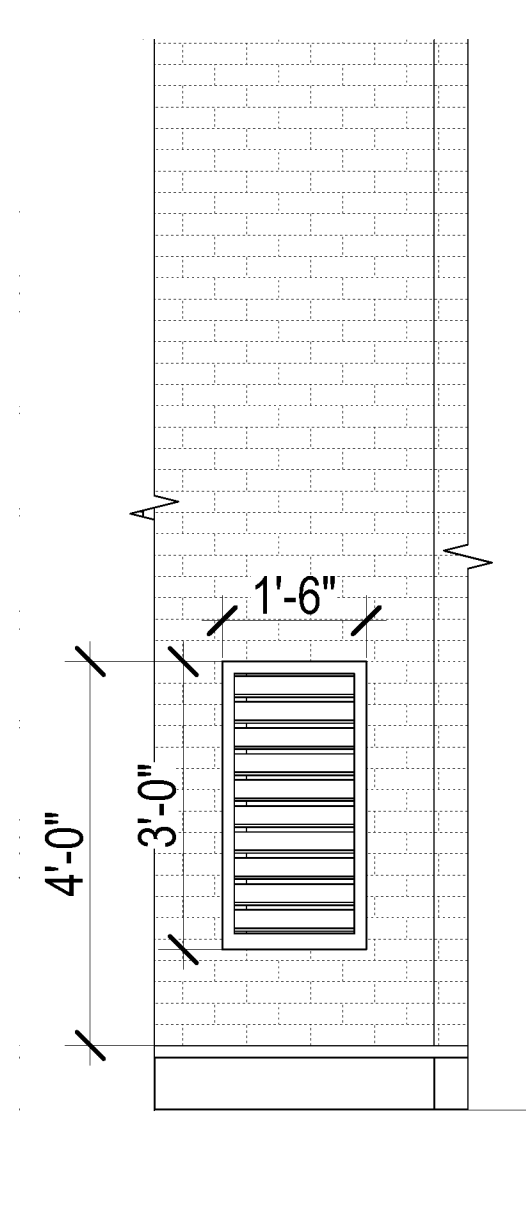
C3 PORTE COCHERE NORTH ELEVATION

 SCALE: 3/16" = 1'-0"



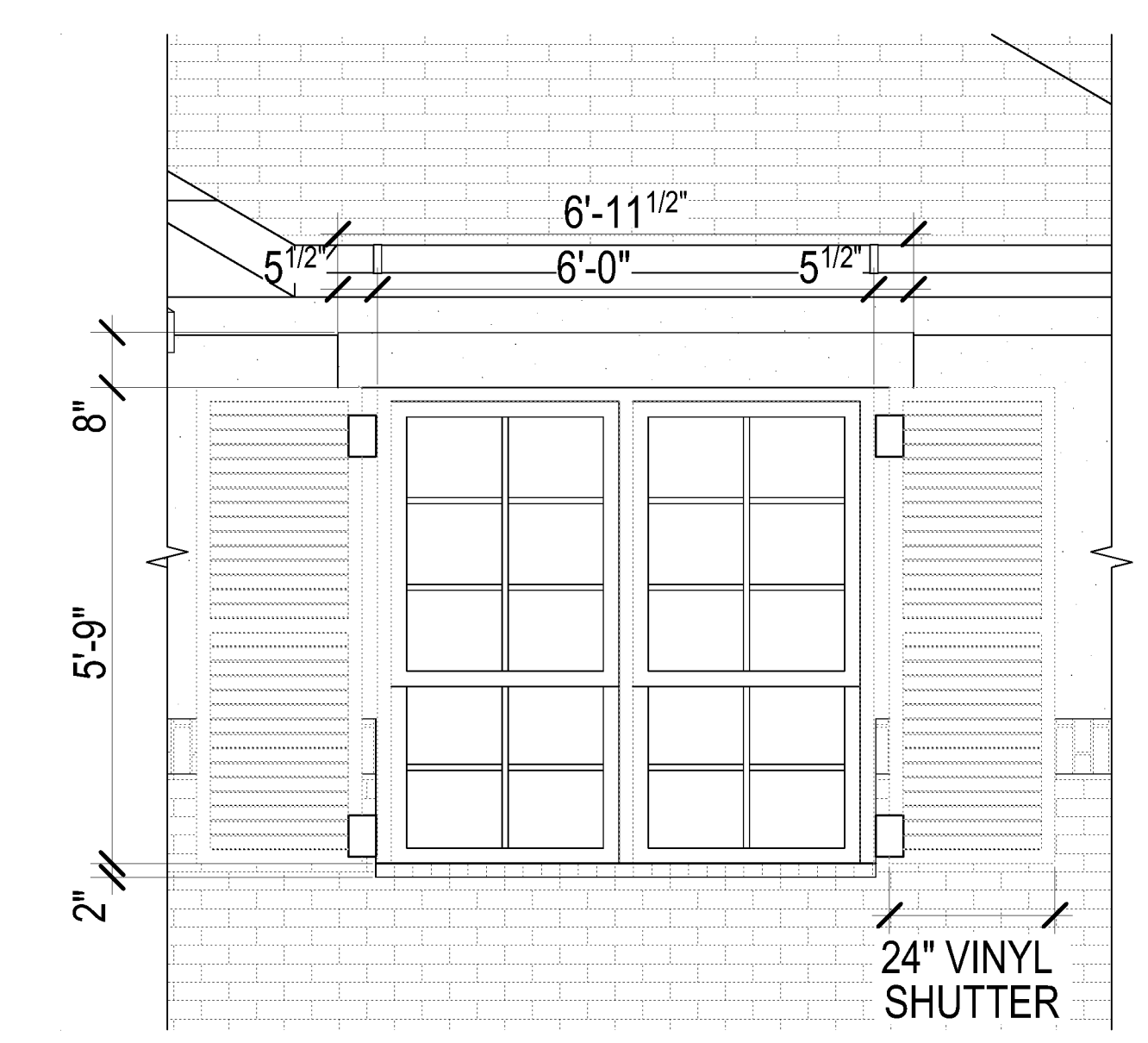
C4 PORTE COCHERE EAST ELEVATION

 SCALE: 3/16" = 1'-0"



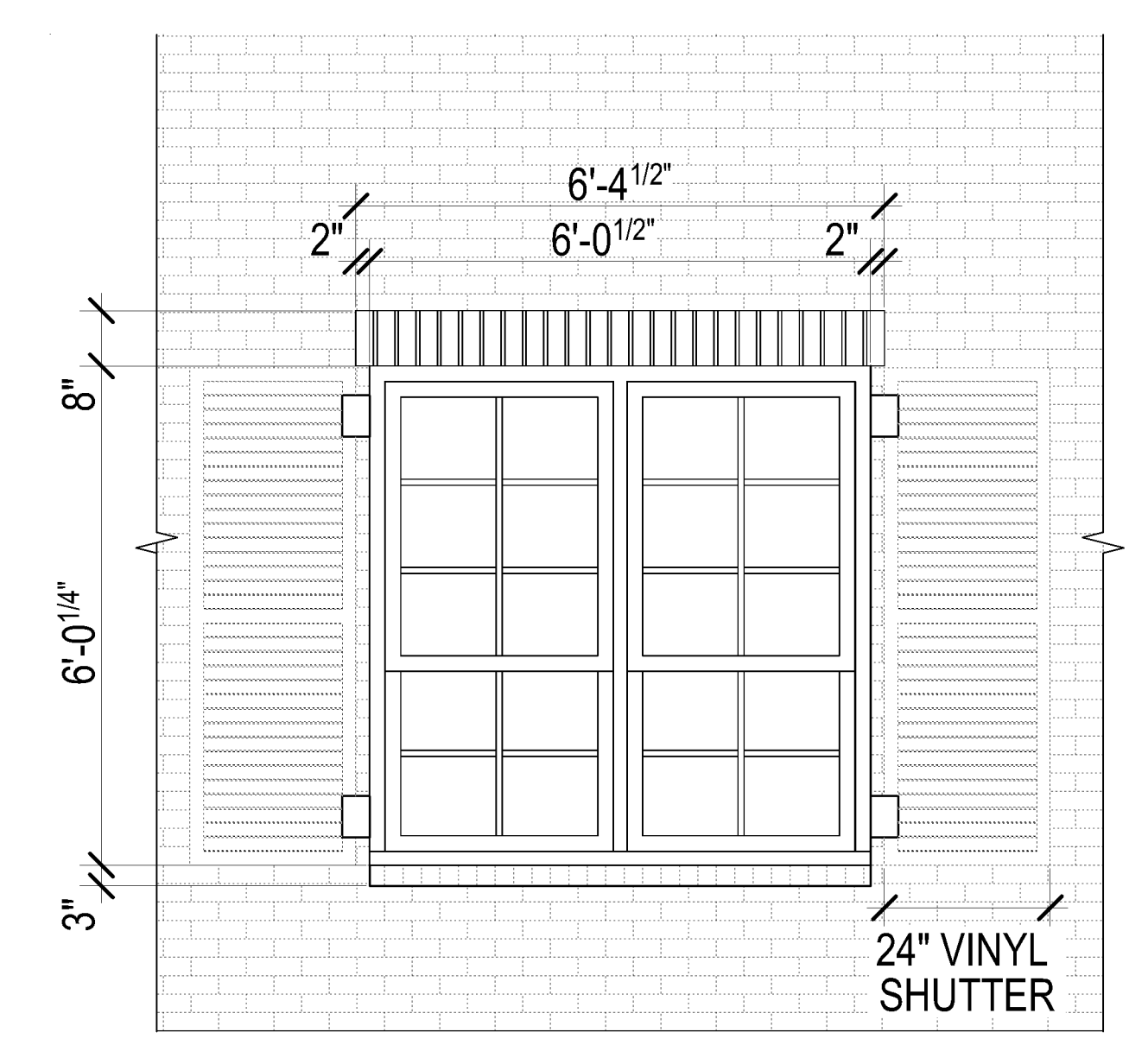
A3 VTAC VENT

 SCALE: 1/2" = 1'-0"



A3 WINDOW W/ SHUTTERS

 SCALE: 1/2" = 1'-0"



A5 WINDOW W/ SHUTTERS

 SCALE: 1/2" = 1'-0"

- ELEVATION KEYED NOTES**
- 1) BRICK
 - 2) STUCCO
 - 3) BRICK HEADER
 - 4) 5 1/2" FIBER CEMENT TRIM, PTD.
 - 5) FIBER CEMENT TRIM @ BEAM, PTD.
 - 6) FIBER CEMENT TRIM @ FASCIA, PTD.
 - 7) FIBER CEMENT PANEL @ COLUMN, PTD.
 - 8) STUCCO TRIM PROFILE
 - 9) ASPHALT SHINGLE ROOF
 - 10) STANDING SEAM METAL ROOF
 - 11) DECORATIVE FIBER CEMENT TRIM AROUND WINDOW
 - 12) PAINTED WOOD SHUTTERS
 - 13) RAILING
 - 14) PORCH SCREEN ASSEMBLY
 - 15) DRYER VENT FRAME
 - 16) STONE CAP
 - 17) 8" BRICK BANDING
 - 18) DECORATIVE LOUVERED VENT
 - 19) DECORATIVE BRACKETS
 - 20) ALUMINUM DOWNSPOUT AND GUTTER, RE: ROOFING FOR DOWNSPOUT LOCATIONS.
 - 21) EXHAUST VENT; REF: MEP

- ELEVATION GENERAL NOTES**
1. EXTERIOR WINDOW HEAD HEIGHTS TO BE AS FOLLOWS, UNL:
 - 8'-0" @ 1ST FLOOR
 - 7'-0" @ 2ND FLOOR
 - 7'-0" @ MC FIRST FLOOR
 2. RETURN MASONRY AT ALL WINDOWS AND DOORS WHERE MASONRY IS PRESENT
 3. TYPICAL BRICK WANSCOT 4'-0" AFF. UNL.
 4. REFER TO FINISH SCHEDULES FOR EXTERIOR COLORS & FINISHES

ISSUE: PERMIT SET

©2016 PI ARCHITECTS, INC.

REVISIONS:

DATE: 03/31/2016

 PROJECT NUMBER: 14017

 SHEET TITLE: BUILDING ELEVATIONS DETAILS

SHEET: A4.4