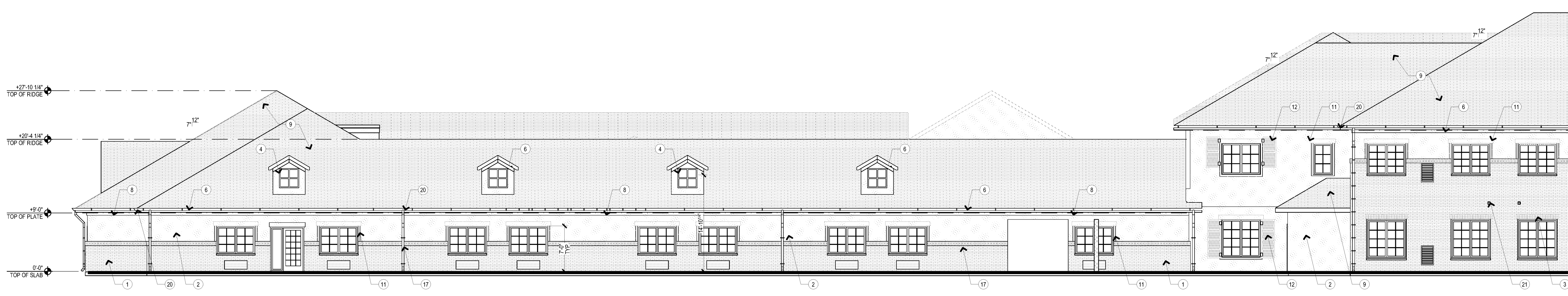
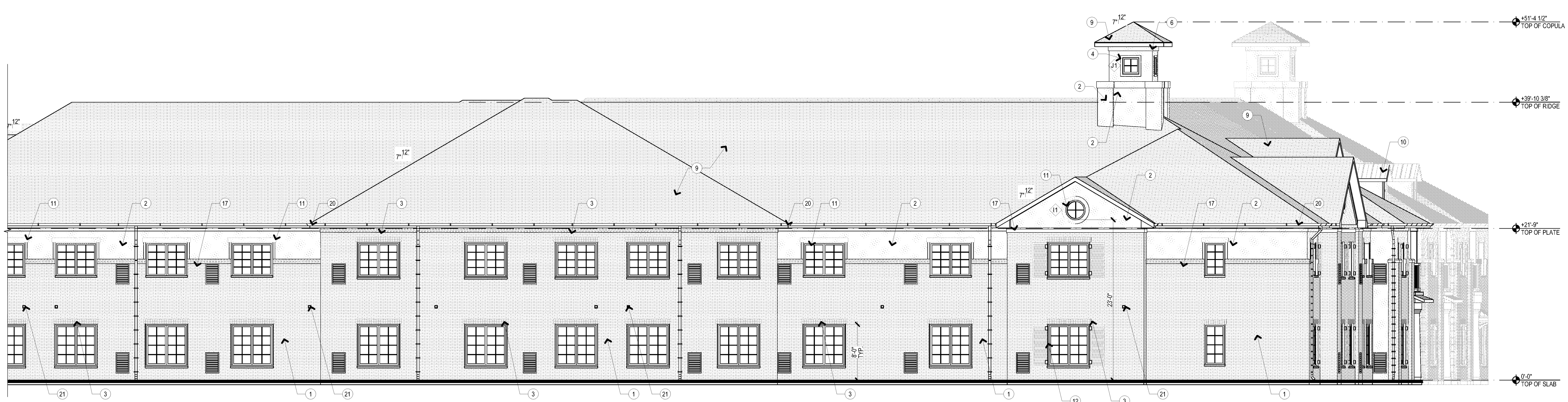


D1 WEST ELEVATION
SCALE: 1/8" = 1'-0"



B1 SOUTH ELEVATION - OVERALL
SCALE: 1/8" = 1'-0"



A1 SOUTH ELEVATION - OVERALL
SCALE: 1/8" = 1'-0"

ELEVATION KEYED NOTES

- 1) BRICK
- 2) STUCCO
- 3) BRICK HEADER
- 4) 5 1/2" FIBER CEMENT TRIM, PTD.
- 5) FIBER CEMENT TRIM @ BEAM, PTD.
- 6) FIBER CEMENT TRIM @ FASCIA, PTD.
- 7) FIBER CEMENT PANEL @ COLUMN, PTD.
- 8) STUCCO TRIM PROFILE
- 9) ASPHALT SHINGLE ROOF
- 10) STANDING SEAM METAL ROOF
- 11) DECORATIVE FIBER CEMENT TRIM AROUND WINDOW
- 12) PAINTED WOOD SHUTTERS
- 13) RAILING
- 14) PORCH SCREEN ASSEMBLY
- 15) DRYER VENT FRAME
- 16) STONE CAP
- 17) 8" BRICK BANDING
- 18) DECORATIVE LOUVERED VENT
- 19) DECORATIVE BRACKETS
- 20) ALUMINUM DOWNSPOUT AND GUTTER, RE: ROOFING FOR DOWNSPOUT LOCATIONS.
- 21) EXHAUST VENT; REF: MEP

ELEVATION GENERAL NOTES

1. EXTERIOR WINDOW HEAD HEIGHTS TO BE AS FOLLOWS, UNL:
 - 8'-0" @ 1ST FLOOR
 - 7'-0" @ 2ND FLOOR
 - 7'-0" @ MC FIRST FLOOR
2. RETURN MASONRY AT ALL WINDOWS AND DOORS WHERE MASONRY IS PRESENT
3. TYPICAL BRICK WANSCOT 4'-0" AFF. UNL.
4. REFER TO FINISH SCHEDULES FOR EXTERIOR COLORS & FINISHES

BIM Server: SERVER2015 - BIM Server 19/14017 Concordia Baton Rouge | Ver. 19.001 | Friday, April 01, 2016 | 12:49 AM