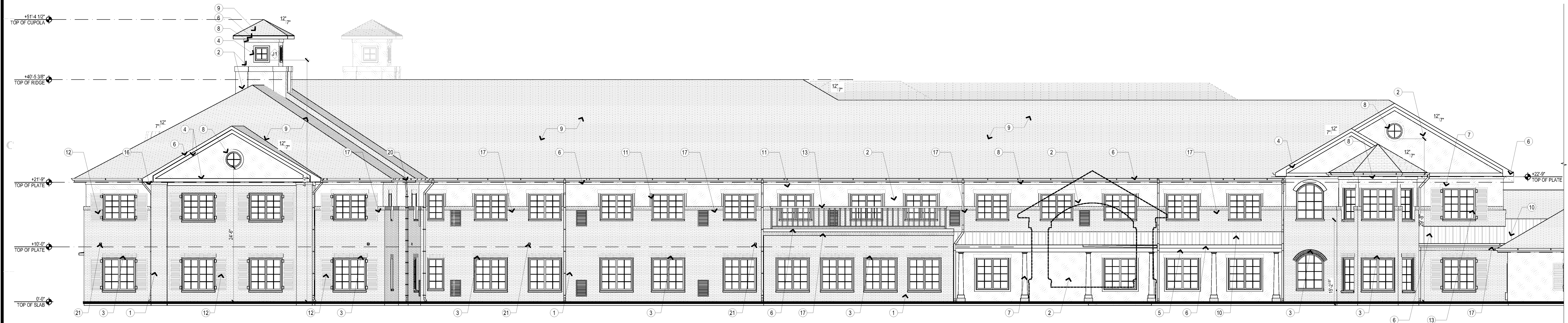
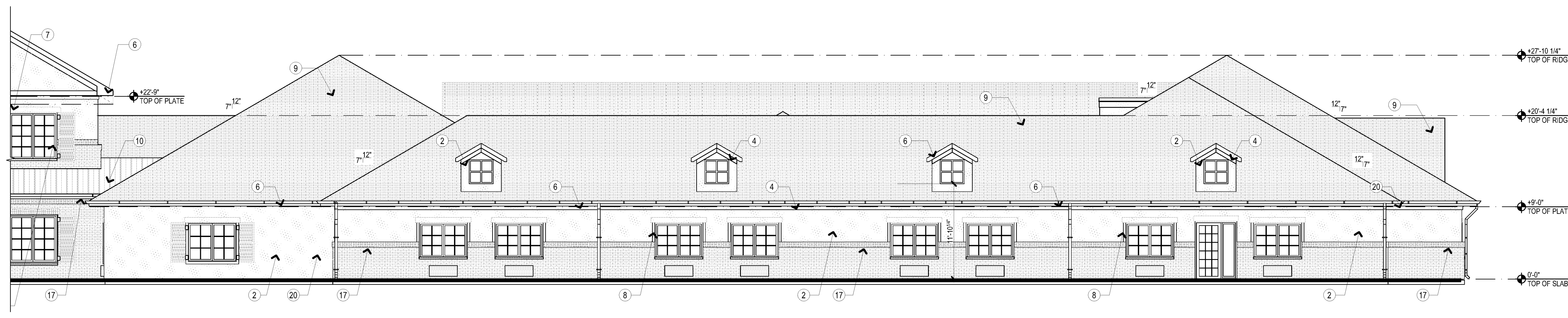


D1 EAST ELEVATION
SCALE: 1/8" = 1'-0"



B1 NORTH ELEVATION
SCALE: 1/8" = 1'-0"



A1 NORTH ELEVATION
SCALE: 1/8" = 1'-0"

ELEVATION GENERAL NOTES

- EXTERIOR WINDOW HEAD HEIGHTS TO BE AS FOLLOWS: UNO, 6'-0" @ AL FIRST FLOOR, 7'-0" @ MC SECOND FLOOR, 7'-0" @ MC FIRST FLOOR
- RETURN MASONRY AT ALL WINDOWS AND DOORS WHERE MASONRY IS PRESENT
- TYPICAL BRICK WANSOT 4'-0" AFF. UNO.
- REFER TO FINISH SCHEDULES FOR EXTERIOR COLORS & FINISHES

- ELEVATION KEYED NOTES**
- BRICK
 - STUCCO
 - BRICK HEADER
 - 5 1/2" FIBER CEMENT TRIM, PTD.
 - FIBER CEMENT TRIM @ BEAM, PTD.
 - FIBER CEMENT TRIM @ FASCIA, PTD.
 - FIBER CEMENT PANEL @ COLUMN, PTD.
 - STUCCO TRIM PROFILE
 - ASPHALT SHINGLE ROOF
 - STANDING SEAM METAL ROOF
 - DECORATIVE FIBER CEMENT TRIM AROUND WINDOW
 - PAINTED WOOD SHUTTERS
 - RAILING
 - PORCH SCREEN ASSEMBLY
 - DRYER VENT FRAME
 - STONE CAP
 - 8" BRICK BANDING
 - DECORATIVE LOUVERED VENT
 - DECORATIVE BRACKETS
 - ALUMINUM DOWNSPOUT AND GUTTER, RE. ROOFING FOR DOWNSPOUT LOCATIONS.
 - EXHAUST VENT, REF. MEP

BIM Server: SERVER2015 - BIM Server 19/14017 Concordia Baton Rouge | Ver. 19.0011 | Friday, April 01, 2016 | 12:49 AM