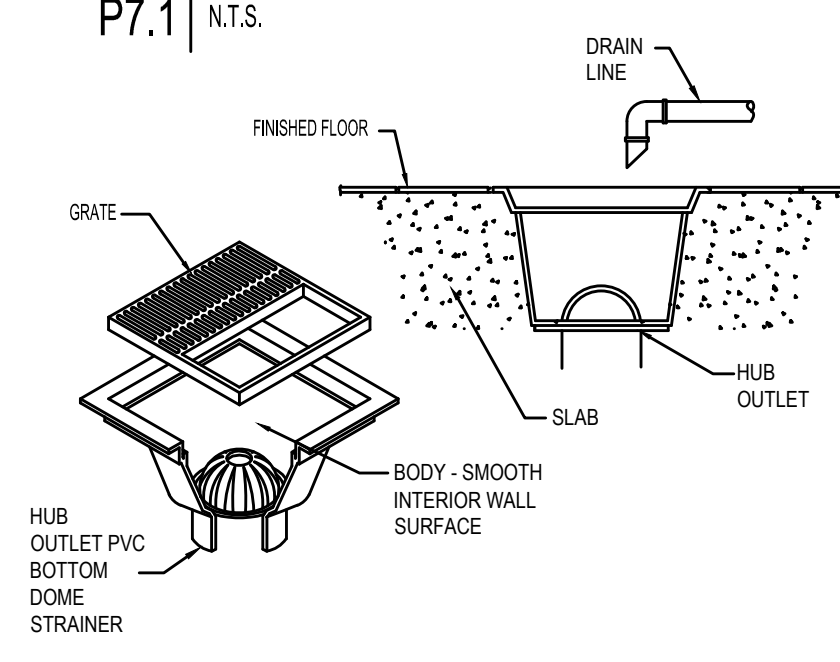
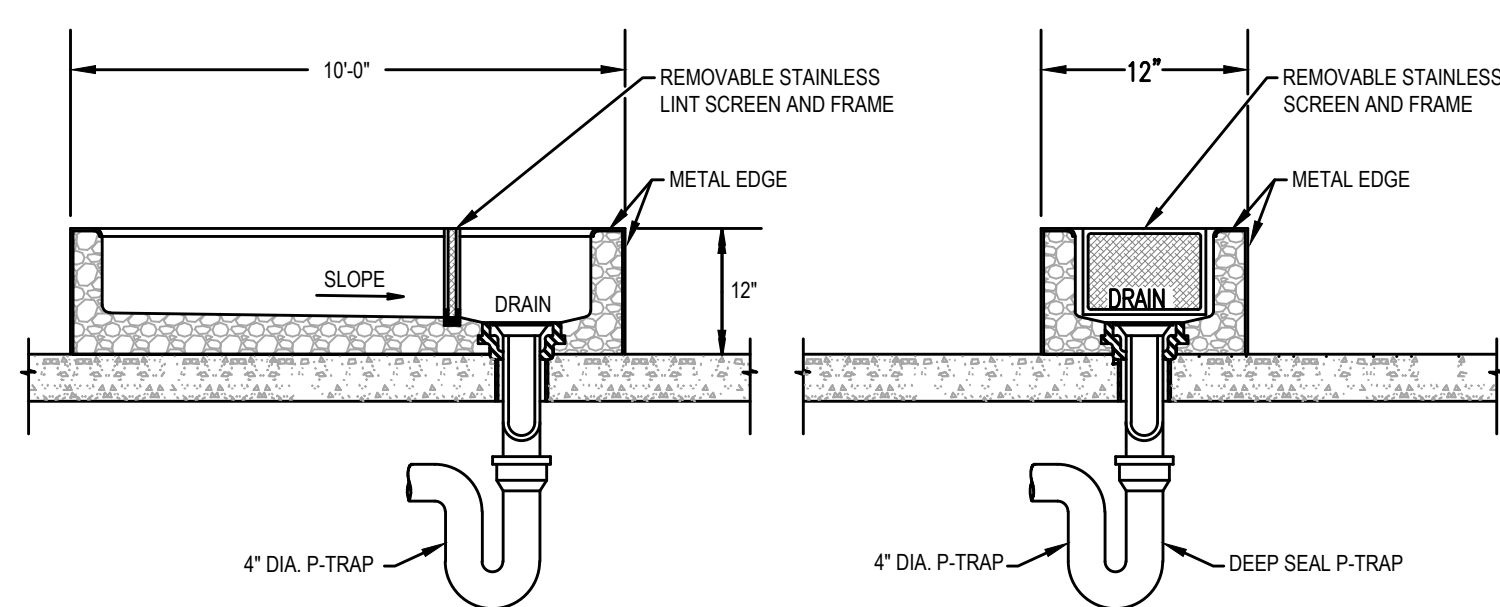


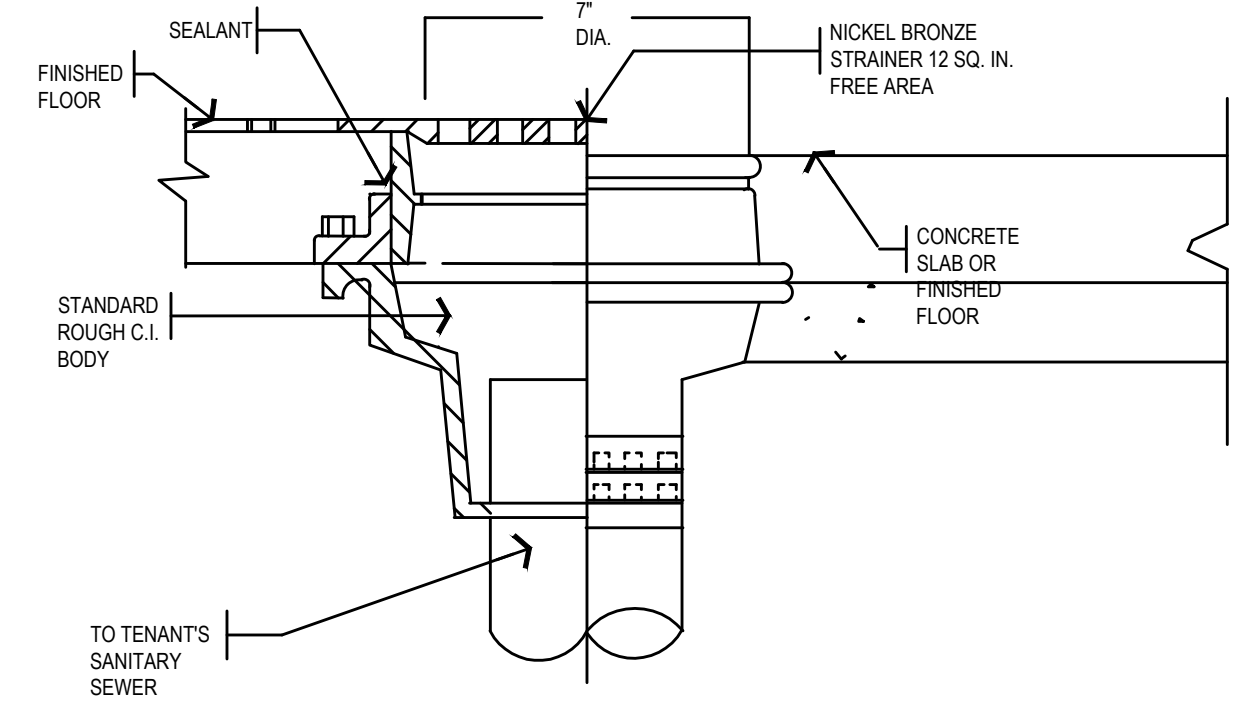
5 | TYPICAL FLOOR DRAIN/SINK
P7.1 | N.T.S.



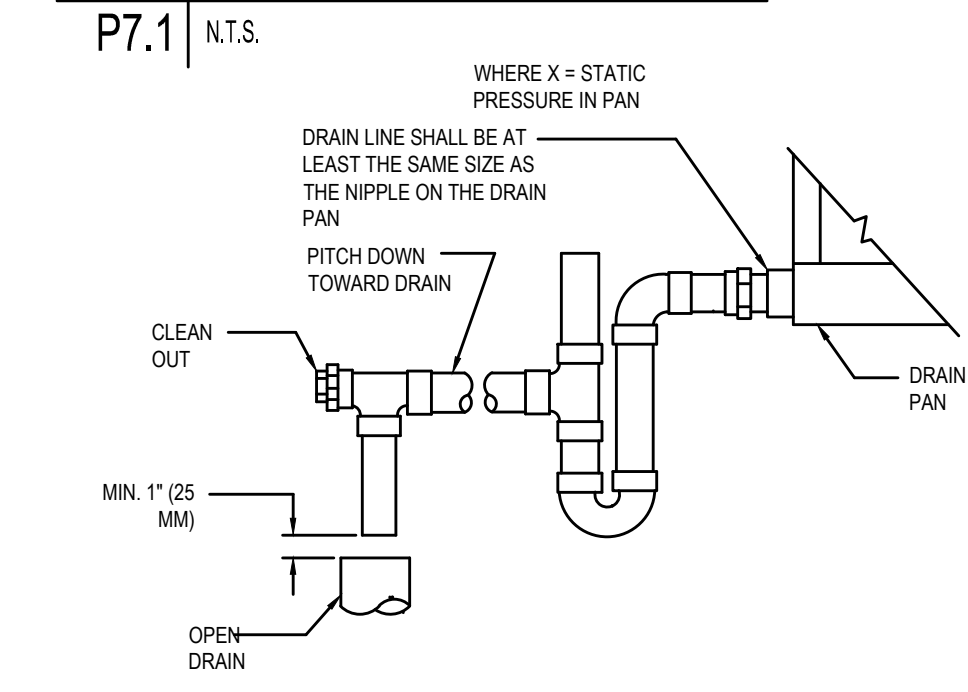
4 | FLOOR SINK DETAIL
P7.1 | N.T.S.



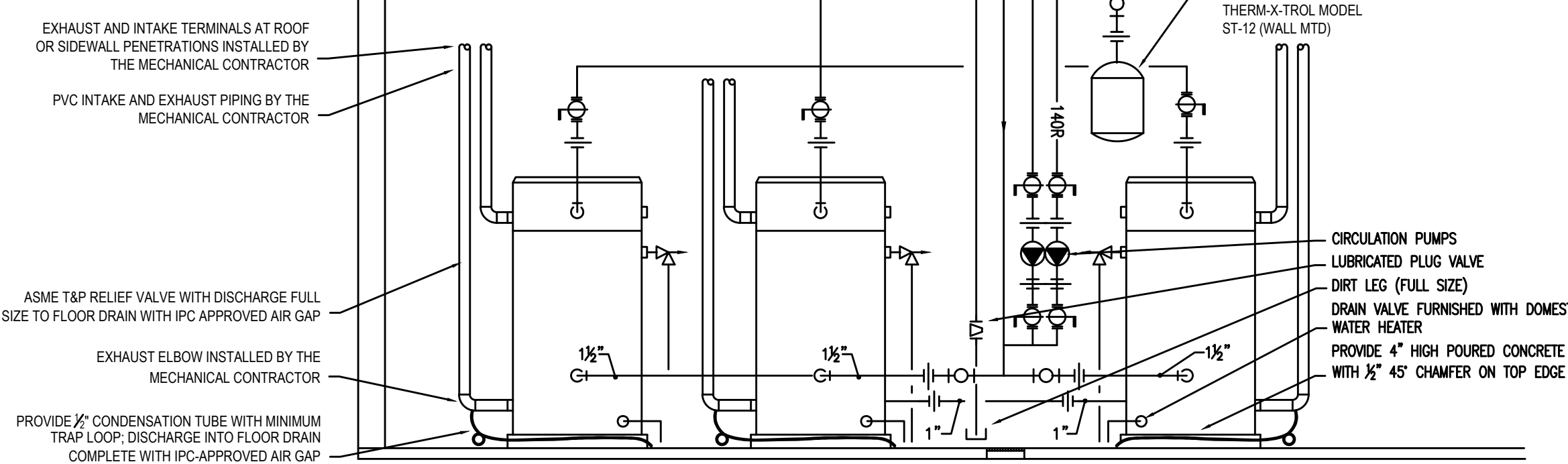
6 | LINT TRAP WASHING MACHINE DETAIL
P7.1 | N.T.S.



4 | TYPICAL FLOOR DRAIN DETAIL
P7.1 | N.T.S.

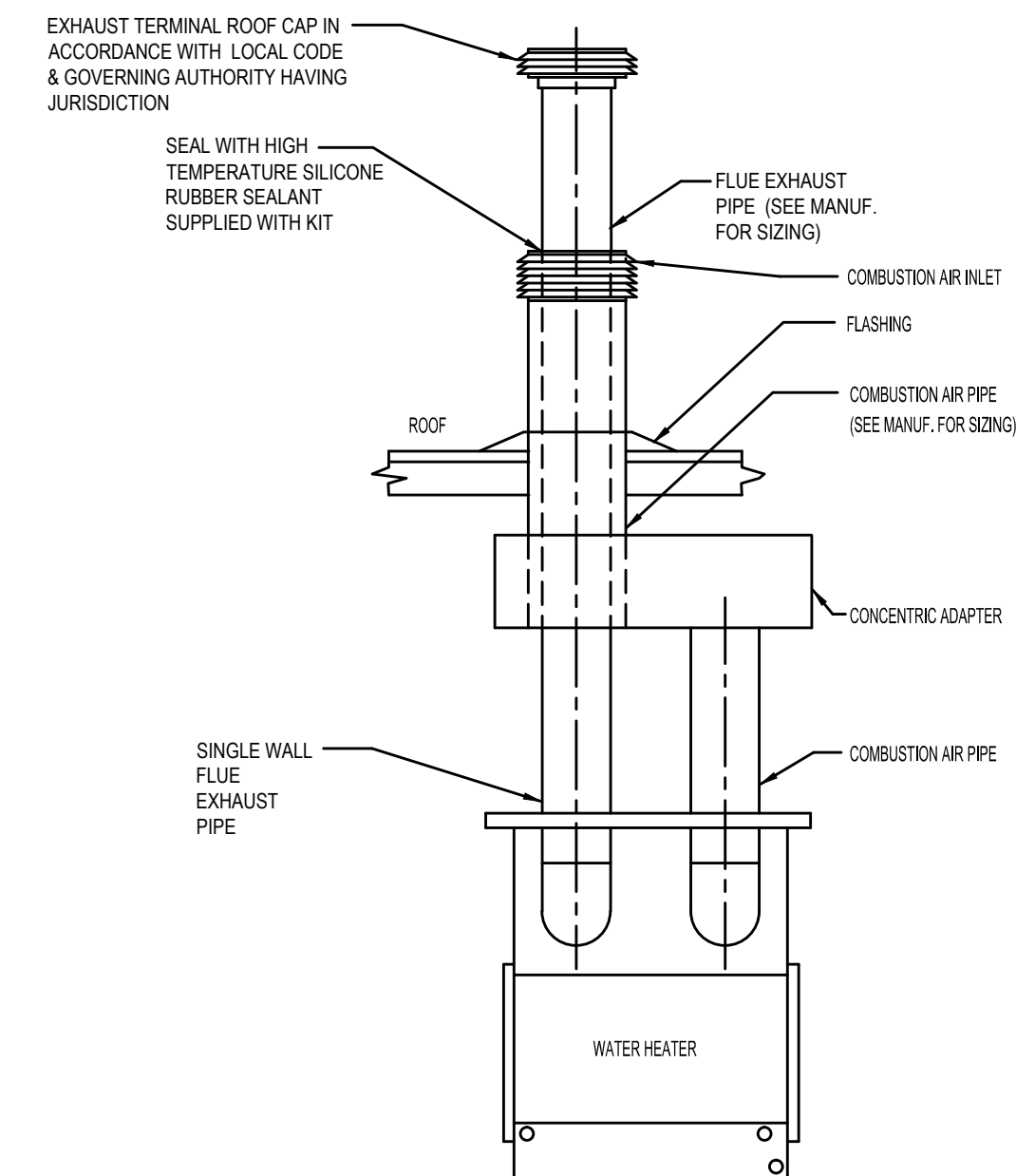


3 | AIR HANDLING UNIT DRAIN TRAP DETAIL
P7.1 | N.T.S.

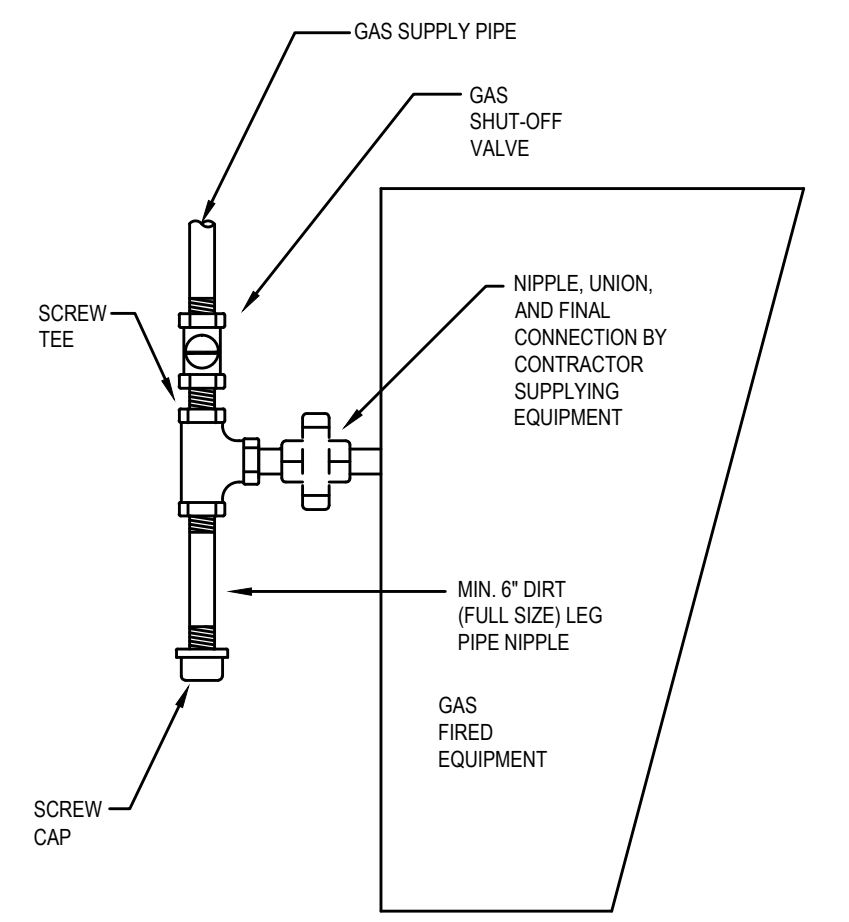


2 | DOMESTIC WATER HEATER DWH1
P7.1 | N.T.S.

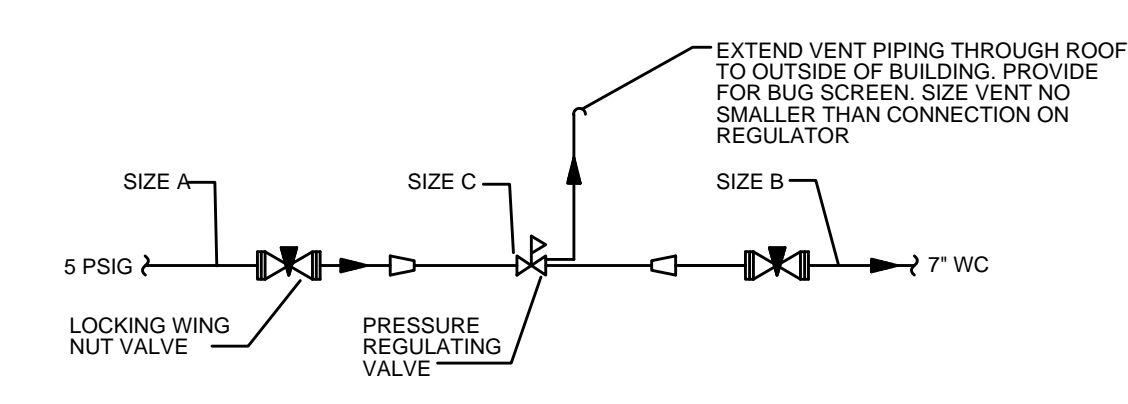
5 | TRAP PRIMER DETAIL
P7.1 | SCALE: NONE



1 | CONCENTRIC VENT DETAIL
P7.1 | N.T.S.



4 | GAS CONNECTION DETAIL
P7.1 | N.T.S.



1 | GAS PRESSURE REGULATING STATION
P7.1 | N.T.S.

NOTES
1. ROOF CUT AND PATCHING BY OTHERS, UNLESS NOTED OTHERWISE.

CONTRACTOR NOTE
IT IS THE RESPONSIBILITY OF THE CONTRACTOR TO NOTIFY THE ARCHITECT, LANDLORD AND TENANT OF ANY DISCREPANCIES ENCOUNTERED ON THE PLANS OR IN EXISTING SITE CONDITIONS PRIOR TO SUBMISSION OF BID.
BIDDERS ARE TO VISIT THE SITE AND FAMILIARIZE THEMSELVES AS TO THE NATURE AND SCOPE OF THE WORK. THE BASE BID SHALL REFLECT MODIFICATIONS TO SYSTEMS AND DEVICES AS REQUIRED BY STATE, LOCAL AND FEDERAL CODES WHETHER INDICATED OR NOT ON CONTRACT DOCUMENTS. THE SUBMISSIONS OF A BID WILL BE EVIDENCE THAT SUCH AN EXAMINATION AND COMPLIANCE WITH GOVERNING CODES/REQUIREMENTS HAS BEEN MADE. LATER CLAIMS FOR LABOR, EQUIPMENT OR MATERIALS REQUIRED, OR FOR DIFFICULTIES ENCOUNTERED WHICH COULD HAVE BEEN FORESEEN HAD AN EXAMINATION AND CODE/REQUIREMENTS REVIEW BEEN MADE, WILL NOT BE ALLOWED.