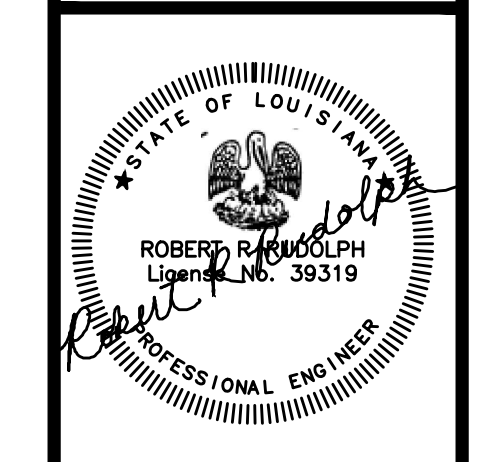


- PLAN NOTES:**
1. HW AND CW FROM BELOW TO SERVE UNIT. REFER TO ENLARGED UNIT PLANS FOR WATER LAYOUT AND FIXTURE TAGS WITH-IN UNITS.
 2. HW AND CW FROM BELOW TO SERVE FIXTURE(S).
 3. HW, HMR, CV, AND GAS FROM BELOW. REFER TO LOWER FLOOR FOR CONTINUATION.
 4. PROVIDE SHUT-OFF VALVE, BALANCING VALVE, AND CHECK VALVE ALONG WITH THE RECIRCULATING PUMP WITH IN THE MECHANICAL ROOM FOR EASY ACCESS.

pi architects
 3500 Jefferson St. Suite 303
 Austin, TX 78731
 P: (512) 231-1910
 F: (512) 231-1950
 www.piarich.com
 architecture + master
 interior + landscape
 architecture
PE Services
 PROFESSIONAL ENGINEERING
 1-800-597-0900
 www.pe-services.com
 These plans have been properly
 examined by the undersigned. I
 have determined that they comply
 with existing local Louisiana
 codes, and have been properly
 site adapted to use in this area.

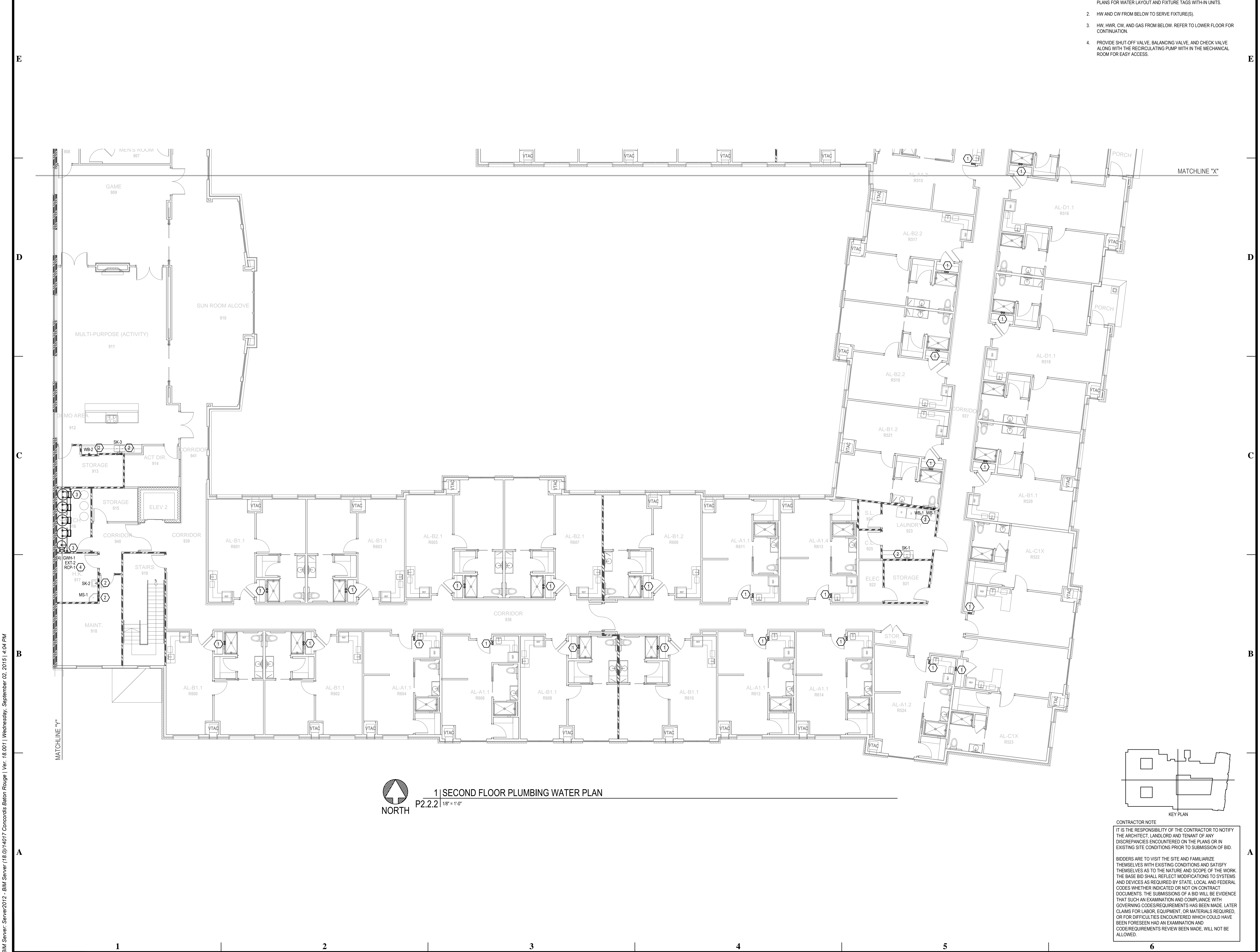


**WATERSTONE AT BATON ROUGE
 ASSISTED LIVING & MEMORY CARE**
 SIEGEN LANE
 BATON ROUGE, LA 70810

ISSUE: PERMIT SET

©2015 PI ARCHITECTS, INC.
 REVISIONS:

DATE: 03/31/2016
 PROJECT NUMBER: PES 15090
 SHEET TITLE: SECOND FLOOR PLUMBING WATER PLAN
 SHEET: P2.2.2



1 SECOND FLOOR PLUMBING WATER PLAN
 P2.2.2 1/8" = 1'-0"

CONTRACTOR NOTE
 IT IS THE RESPONSIBILITY OF THE CONTRACTOR TO NOTIFY THE ARCHITECT, LANDLORD AND TENANT OF ANY DISCREPANCIES ENCOUNTERED ON THE PLANS OR IN EXISTING SITE CONDITIONS PRIOR TO SUBMISSION OF BID.
 BIDDERS ARE TO VISIT THE SITE AND FAMILIARIZE THEMSELVES WITH EXISTING CONDITIONS AND SATISFY THEMSELVES AS TO THE NATURE AND SCOPE OF THE WORK. THE BASE BID SHALL REFLECT MODIFICATIONS TO SYSTEMS AND DEVICES AS REQUIRED BY STATE, LOCAL AND FEDERAL CODES WHETHER INDICATED OR NOT ON CONTRACT DOCUMENTS. THE SUBMISSIONS OF A BID WILL BE EVIDENCE THAT SUCH AN EXAMINATION AND COMPLIANCE WITH GOVERNING CODES/REQUIREMENTS HAS BEEN MADE. LATER CLAIMS FOR LABOR, EQUIPMENT, OR MATERIALS REQUIRED, OR FOR DIFFICULTIES ENCOUNTERED WHICH COULD HAVE BEEN FORESEEN HAD AN EXAMINATION AND CODE/REQUIREMENTS REVIEW BEEN MADE, WILL NOT BE ALLOWED.

BIM Server: Server2012 - BIM Server (18/07/1417 Concordia Baton Rouge) Ver: 18.0011 Wednesday, September 02, 2015 1:04 PM