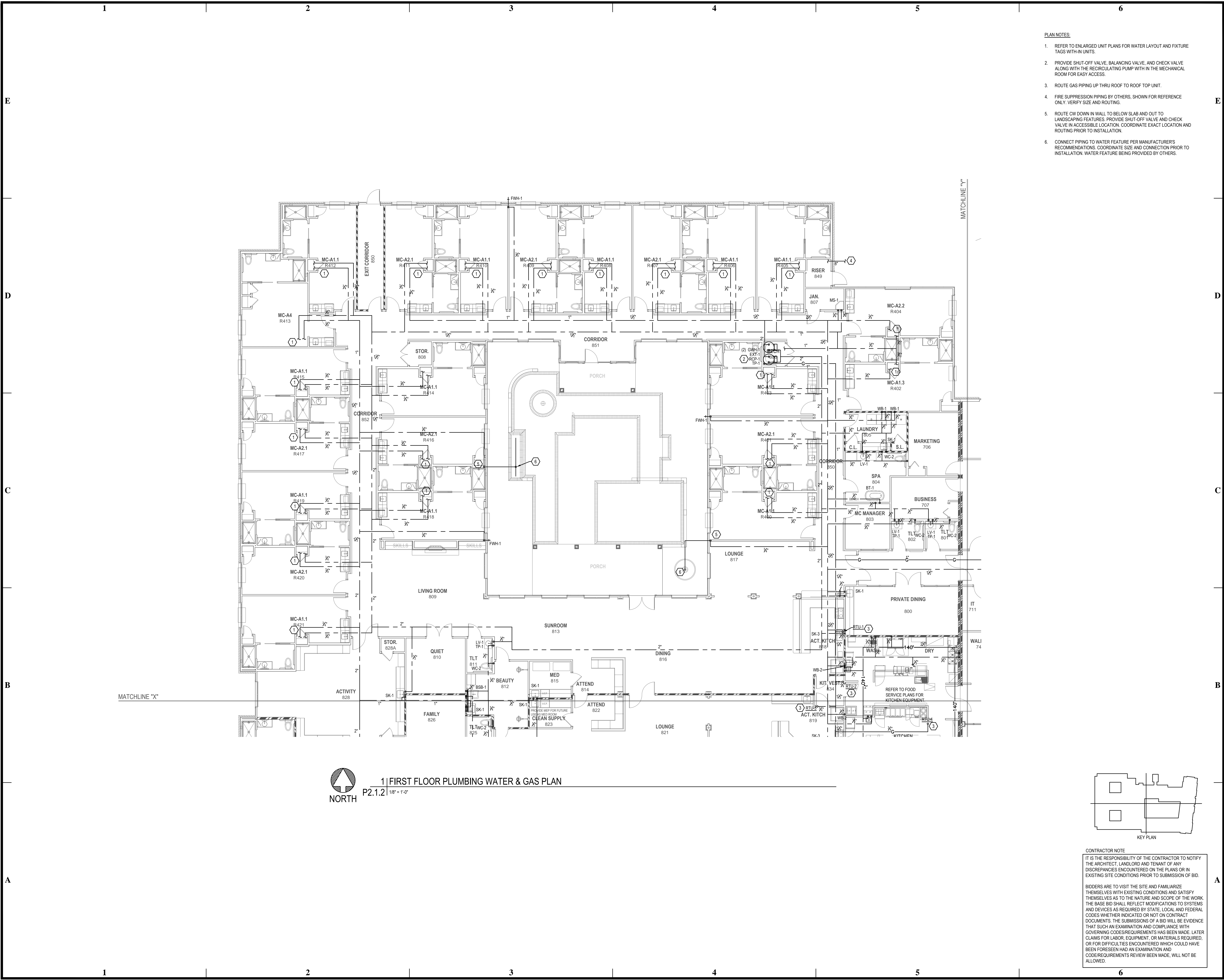
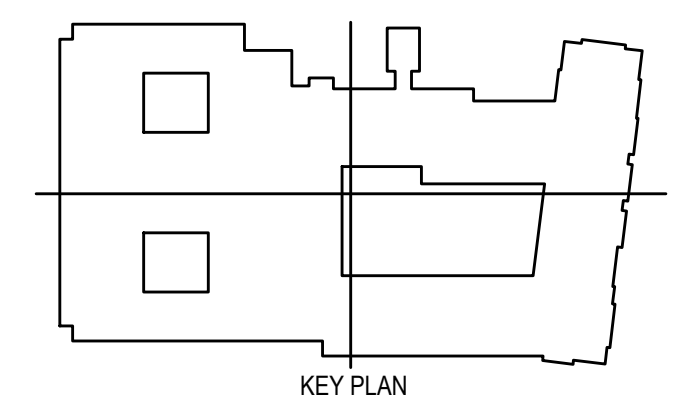


BIM Server: Save/2012 - BIM Server (18/07/14)17 Concordia Baton Rouge | Ver: 18.001 | Wednesday, September 02, 2015 | 4:04 PM



1 | FIRST FLOOR PLUMBING WATER & GAS PLAN  
P2.1.2 | 1/8" = 1'-0"

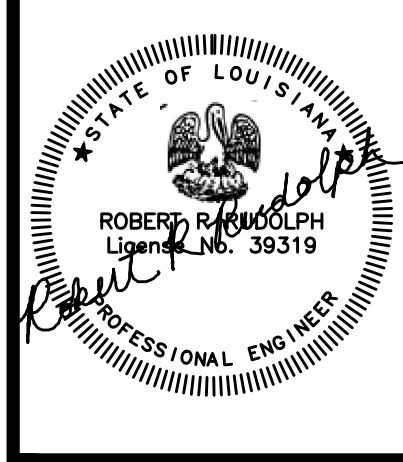


**CONTRACTOR NOTE**  
IT IS THE RESPONSIBILITY OF THE CONTRACTOR TO NOTIFY THE ARCHITECT, LANDLORD AND TENANT OF ANY DISCREPANCIES ENCOUNTERED ON THE PLANS OR IN EXISTING SITE CONDITIONS PRIOR TO SUBMISSION OF BID.  
BIDDERS ARE TO VISIT THE SITE AND FAMILIARIZE THEMSELVES WITH EXISTING CONDITIONS AND SATISFY THEMSELVES AS TO THE NATURE AND SCOPE OF THE WORK. THE BASE BID SHALL REFLECT MODIFICATIONS TO SYSTEMS AND DEVICES AS REQUIRED BY STATE, LOCAL AND FEDERAL CODES WHETHER INDICATED OR NOT ON CONTRACT DOCUMENTS. THE SUBMISSIONS OF A BID WILL BE EVIDENCE THAT SUCH AN EXAMINATION AND COMPLIANCE WITH GOVERNING CODES/REQUIREMENTS HAS BEEN MADE. LATER CLAIMS FOR LABOR, EQUIPMENT, OR MATERIALS REQUIRED, OR FOR DIFFICULTIES ENCOUNTERED WHICH COULD HAVE BEEN FORESEEN HAD AN EXAMINATION AND CODE/REQUIREMENTS REVIEW BEEN MADE, WILL NOT BE ALLOWED.

- PLAN NOTES:**
- REFER TO ENLARGED UNIT PLANS FOR WATER LAYOUT AND FIXTURE TAGS WITH-IN UNITS.
  - PROVIDE SHUT-OFF VALVE, BALANCING VALVE, AND CHECK VALVE ALONG WITH THE RECIRCULATING PUMP WITH IN THE MECHANICAL ROOM FOR EASY ACCESS.
  - ROUTE GAS PIPING UP THRU ROOF TO ROOF TOP UNIT.
  - FIRE SUPPRESSION PIPING BY OTHERS, SHOWN FOR REFERENCE ONLY. VERIFY SIZE AND ROUTING.
  - ROUTE CW DOWN IN WALL TO BELOW SLAB AND OUT TO LANDSCAPING FEATURES. PROVIDE SHUT-OFF VALVE AND CHECK VALVE IN ACCESSIBLE LOCATION. COORDINATE EXACT LOCATION AND ROUTING PRIOR TO INSTALLATION.
  - CONNECT PIPING TO WATER FEATURE PER MANUFACTURER'S RECOMMENDATIONS. COORDINATE SIZE AND CONNECTION PRIOR TO INSTALLATION. WATER FEATURE BEING PROVIDED BY OTHERS.

**pi architects**  
3500 Jefferson St. Suite 303  
Austin, TX 78731  
P: (512) 231-1910  
F: (512) 231-1950  
www.piarch.com

architecture + master  
interior + landscape  
architecture  
**PE Services**  
PROFESSIONAL ENGINEERING  
www.pe-services.com  
These plans have been properly examined by the undersigned. I have determined that they comply with existing local Louisiana codes, and have been properly site adapted to use in this area.



**WATERSTONE AT BATON ROUGE  
ASSISTED LIVING & MEMORY CARE**  
SIEGEN LANE  
BATON ROUGE, LA 70810

ISSUE: PERMIT SET

©2015 PI ARCHITECTS, INC.

REVISIONS:

DATE: 03/31/2016  
PROJECT NUMBER: PES 15090  
SHEET TITLE: FIRST FLOOR PLUMBING WATER & GAS PLAN  
SHEET:

**P2.1.2**