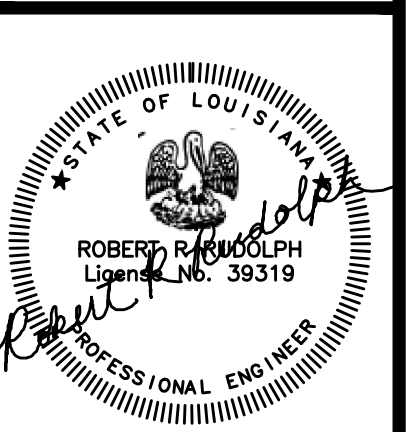


These plans have been properly examined by the undersigned. I have determined that they comply with existing local Louisiana codes, and have been properly site adapted to use in this area.



**WATERSTONE AT BATON ROUGE
 ASSISTED LIVING & MEMORY CARE**
 SIEGEN LANE
 BATON ROUGE, LA 70810

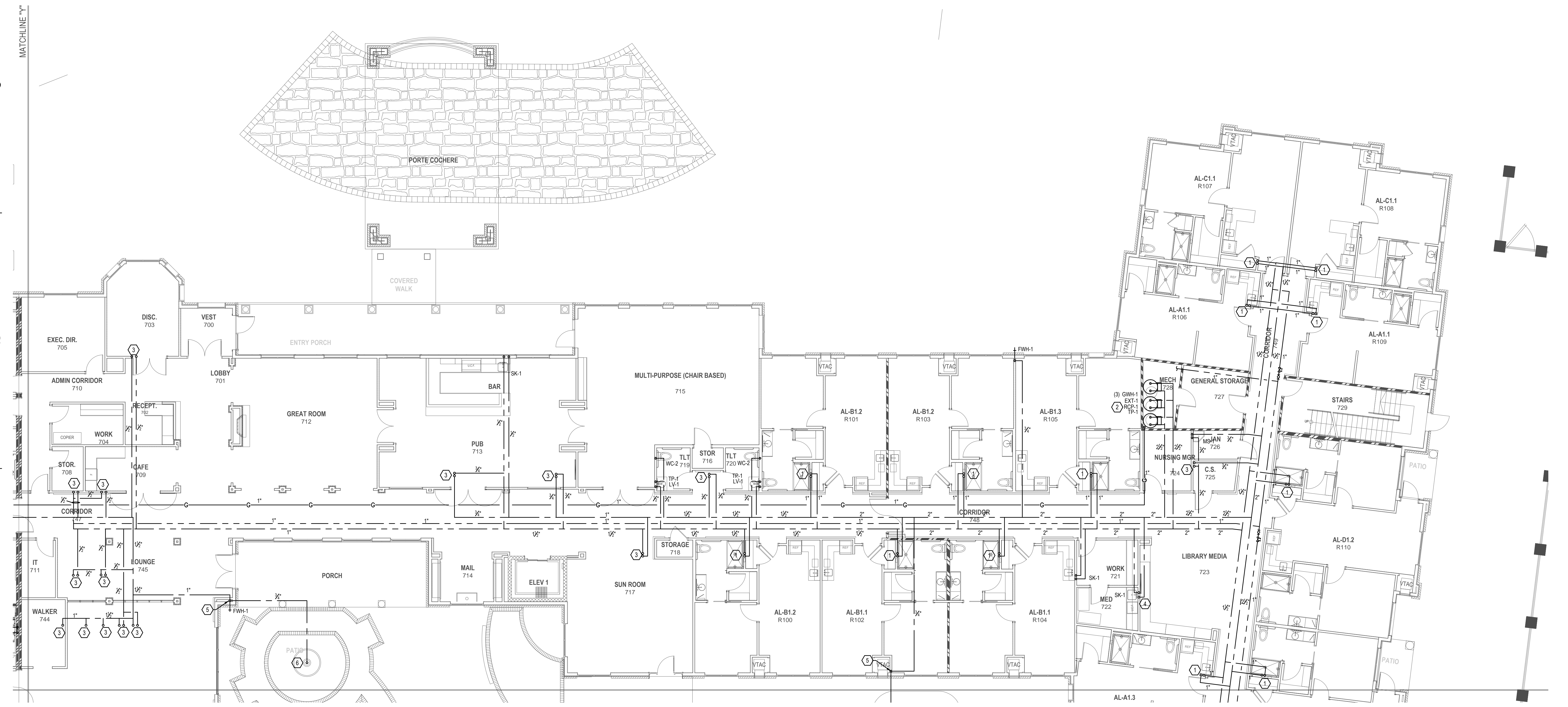
ISSUE: PERMIT SET

©2015 PI ARCHITECTS, INC.
 REVISIONS:

DATE: 03/31/2016
 PROJECT NUMBER: PES 15090
 SHEET TITLE: FIRST FLOOR PLUMBING WATER PLAN

SHEET: P2.1.1

- PLAN NOTES:**
- REFER TO ENLARGED UNIT PLANS FOR WATER LAYOUT AND FIXTURE TAGS WITH-IN UNITS. BRANCH 1/2" HW AND CW UP TO UNIT ABOVE.
 - PROVIDE SHUT-OFF VALVE, BALANCING VALVE, AND CHECK VALVE ALONG WITH THE RECIRCULATING PUMP WITH IN THE MECHANICAL ROOM FOR EASY ACCESS.
 - ROUTE HW AND/OR CW UP TO FIXTURE(S) ON FLOOR ABOVE.
 - CW AND HW PIPING DOWN TO SINK. BRANCH 1/2" CW AND HW UP TO SINK ON FLOOR ABOVE.
 - ROUTE CW DOWN IN WALL TO BELOW SLAB AND OUT TO LANDSCAPING FEATURES. PROVIDE SHUT-OFF VALVE AND CHECK VALVE IN ACCESSIBLE LOCATION. COORDINATE EXACT LOCATION AND ROUTING PRIOR TO INSTALLATION.
 - CONNECT PIPING TO WATER FEATURE PER MANUFACTURER'S RECOMMENDATIONS. COORDINATE SIZE AND CONNECTION PRIOR TO INSTALLATION. WATER FEATURE BEING PROVIDED BY OTHERS.



1 FIRST FLOOR PLUMBING WATER PLAN
 P2.1.1 1/8" = 1'-0"

CONTRACTOR NOTE
 IT IS THE RESPONSIBILITY OF THE CONTRACTOR TO NOTIFY THE ARCHITECT, LANDLORD AND TENANT OF ANY DISCREPANCIES ENCOUNTERED ON THE PLANS OR IN EXISTING SITE CONDITIONS PRIOR TO SUBMISSION OF BID.
 BIDDERS ARE TO VISIT THE SITE AND FAMILIARIZE THEMSELVES WITH EXISTING CONDITIONS AND SATISFY THEMSELVES AS TO THE NATURE AND SCOPE OF THE WORK. THE BASE BID SHALL REFLECT MODIFICATIONS TO SYSTEMS AND DEVICES AS REQUIRED BY STATE, LOCAL AND FEDERAL CODES WHETHER INDICATED OR NOT ON CONTRACT DOCUMENTS. THE SUBMISSIONS OF A BID WILL BE EVIDENCE THAT SUCH AN EXAMINATION AND COMPLIANCE WITH GOVERNING CODES/REQUIREMENTS HAS BEEN MADE. LATER CLAIMS FOR LABOR, EQUIPMENT, OR MATERIALS REQUIRED, OR FOR DIFFICULTIES ENCOUNTERED WHICH COULD HAVE BEEN FORESEEN HAD AN EXAMINATION AND CODE/REQUIREMENTS REVIEW BEEN MADE, WILL NOT BE ALLOWED.

BIM Server: Server2012 - BIM Server (18 07/14/17 Concordia Baton Rouge) Ver: 18.0011 Wednesday, September 02, 2015 4:04 PM