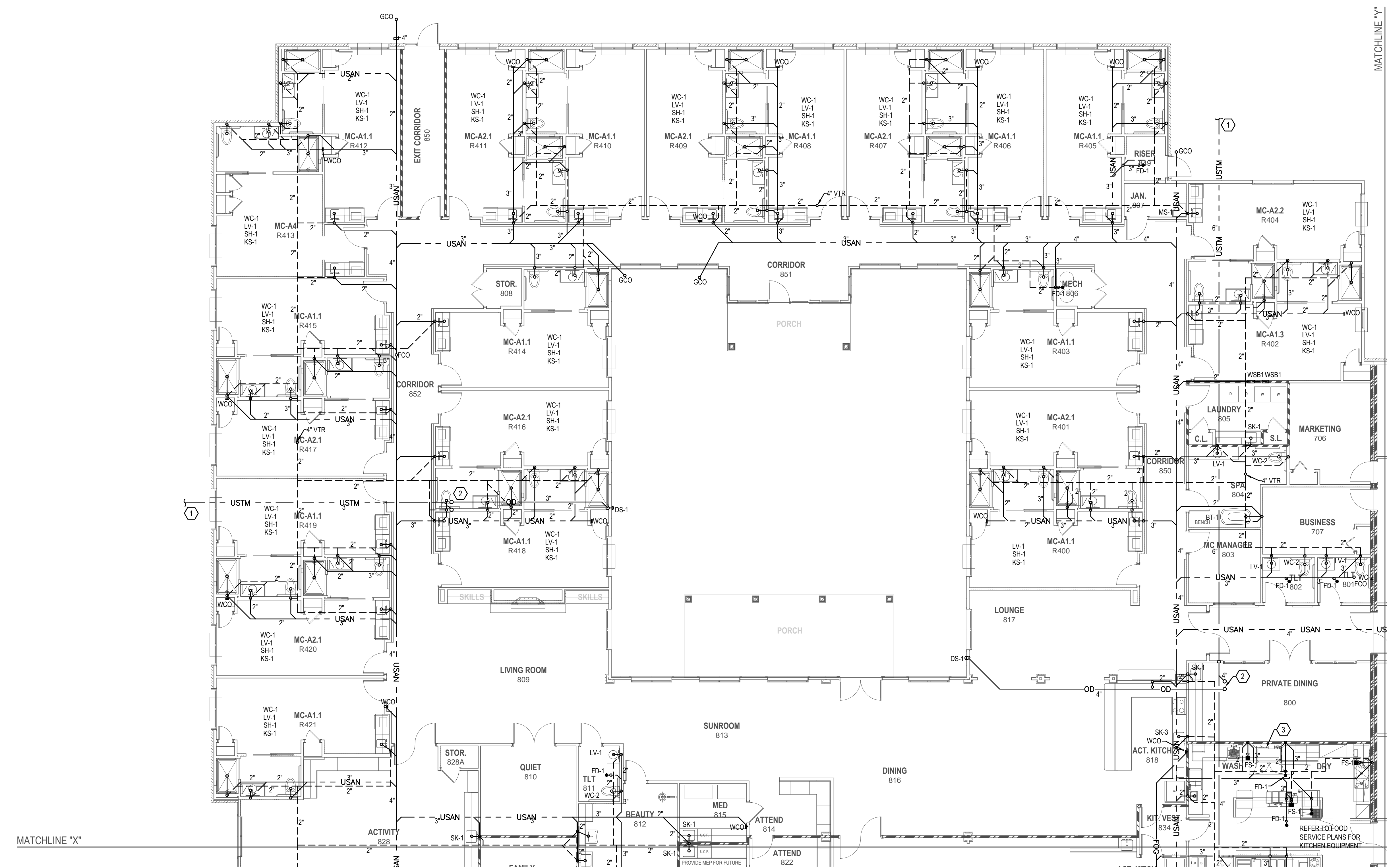


BIM Server: Server2012 - BIM Server (18/07/14)17 Concordia Baton Rouge | Ver: 18.001 | Wednesday, September 02, 2015 | 4:04 PM

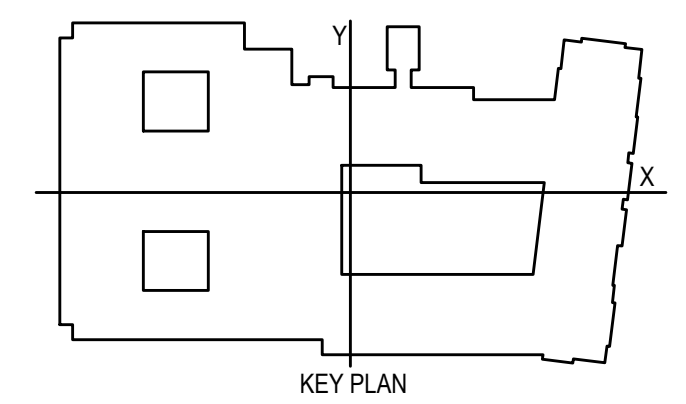
- PLAN NOTES:**
- REFER TO CIVIL PLANS FOR CONTINUATION.
  - STORM AND OVERFLOW DRAINS FROM ROOF. ROUTE STORM DOWN TO BELOW SLAB AND OVERFLOW AS HIGH AS POSSIBLE ABOVE CEILING TO DOWNSPOUT NOZZLE.
  - PROVIDE DRAIN TEMPERING KIT FOR DISHWASHER AS REQUIRED. VERIFY WITH FOOD SERVICE SUPPLIER.

**CONTRACTOR NOTE:**

- REFER TO SANITARY ISOMETRICS FOR SANITARY STACKS SIZES AND PIPING LAYOUT FOR TYPICAL UNIT PLANS.
- COORDINATE WITH HVAC CONTRACTOR FOR CONDENSATE FROM MECHANICAL EQUIPMENT.



**1 | FIRST FLOOR PLUMBING WASTE AND VENT PLAN**  
 P1.1.2 1/8" = 1'-0"  
 NORTH



**CONTRACTOR NOTE:**

IT IS THE RESPONSIBILITY OF THE CONTRACTOR TO NOTIFY THE ARCHITECT, LANDLORD AND TENANT OF ANY DISCREPANCIES ENCOUNTERED ON THE PLANS OR IN EXISTING SITE CONDITIONS PRIOR TO SUBMISSION OF BID.

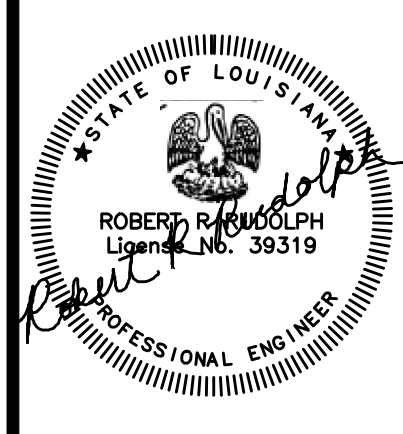
BIDDERS ARE TO VISIT THE SITE AND FAMILIARIZE THEMSELVES WITH EXISTING CONDITIONS AND SATISFY THEMSELVES AS TO THE NATURE AND SCOPE OF THE WORK. THE BASE BID SHALL REFLECT MODIFICATIONS TO SYSTEMS AND DEVICES AS REQUIRED BY STATE, LOCAL AND FEDERAL CODES WHETHER INDICATED OR NOT ON CONTRACT DOCUMENTS. THE SUBMISSIONS OF A BID WILL BE EVIDENCE THAT SUCH AN EXAMINATION AND COMPLIANCE WITH GOVERNING CODES/REQUIREMENTS HAS BEEN MADE. LATER CLAIMS FOR LABOR, EQUIPMENT, OR MATERIALS REQUIRED, OR FOR DIFFICULTIES ENCOUNTERED WHICH COULD HAVE BEEN FORESEEN HAD AN EXAMINATION AND CODE/REQUIREMENTS REVIEW BEEN MADE, WILL NOT BE ALLOWED.

**pi architects**  
 3500 Jefferson St. Suite 303  
 Austin, TX 78731  
 P: (512) 231-1910  
 F: (512) 231-1950

www.piarich.com  
 architecture + master  
 interior + landscape  
 architecture

**PE Services**  
 ENGINEERING THE RIGHT WAY  
 www.pe-services.com

These plans have been properly examined by the undersigned. I have determined that they comply with existing local Louisiana codes, and have been properly site adapted to use in this area.



**WATERSTONE AT BATON ROUGE**  
**ASSISTED LIVING & MEMORY CARE**

SIEGEN LANE  
 BATON ROUGE, LA 70810

ISSUE: PERMIT SET

©2015 PI ARCHITECTS, INC.  
 REVISIONS:

DATE: 03/31/2016  
 PROJECT NUMBER: PES 15090  
 SHEET TITLE: FIRST FLOOR PLUMBING WASTE AND VENT PLAN  
 SHEET:

**P1.1.2**