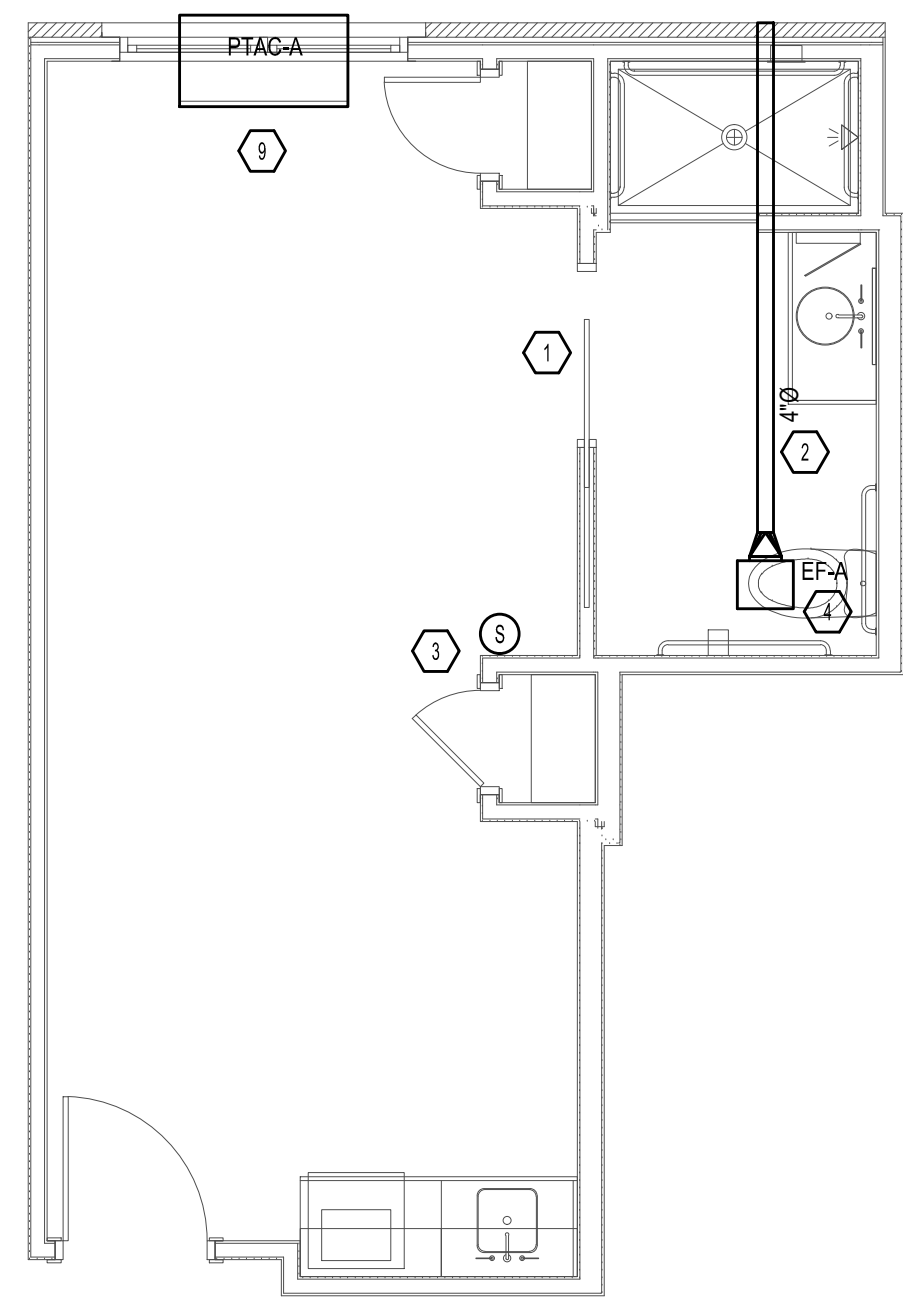
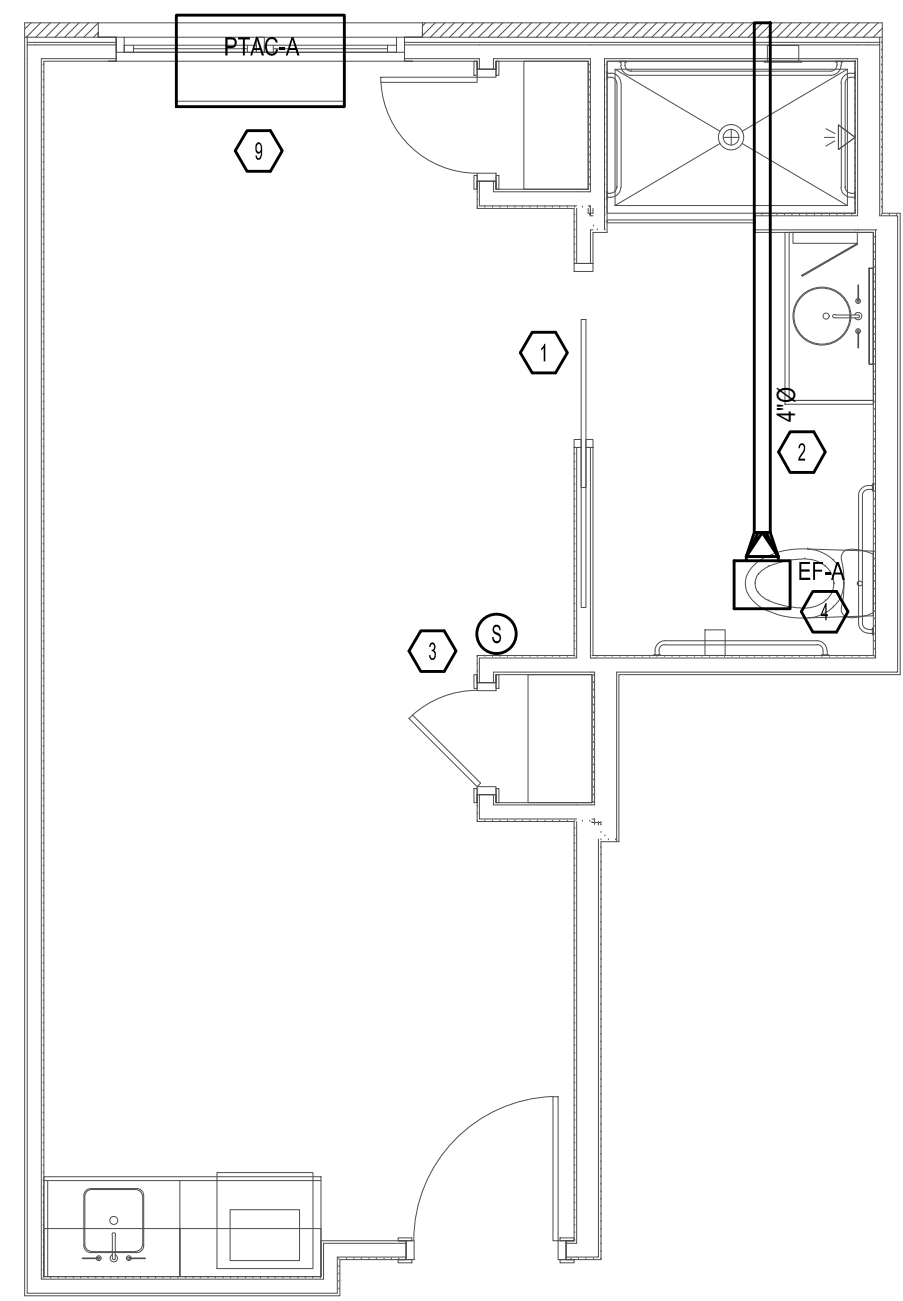


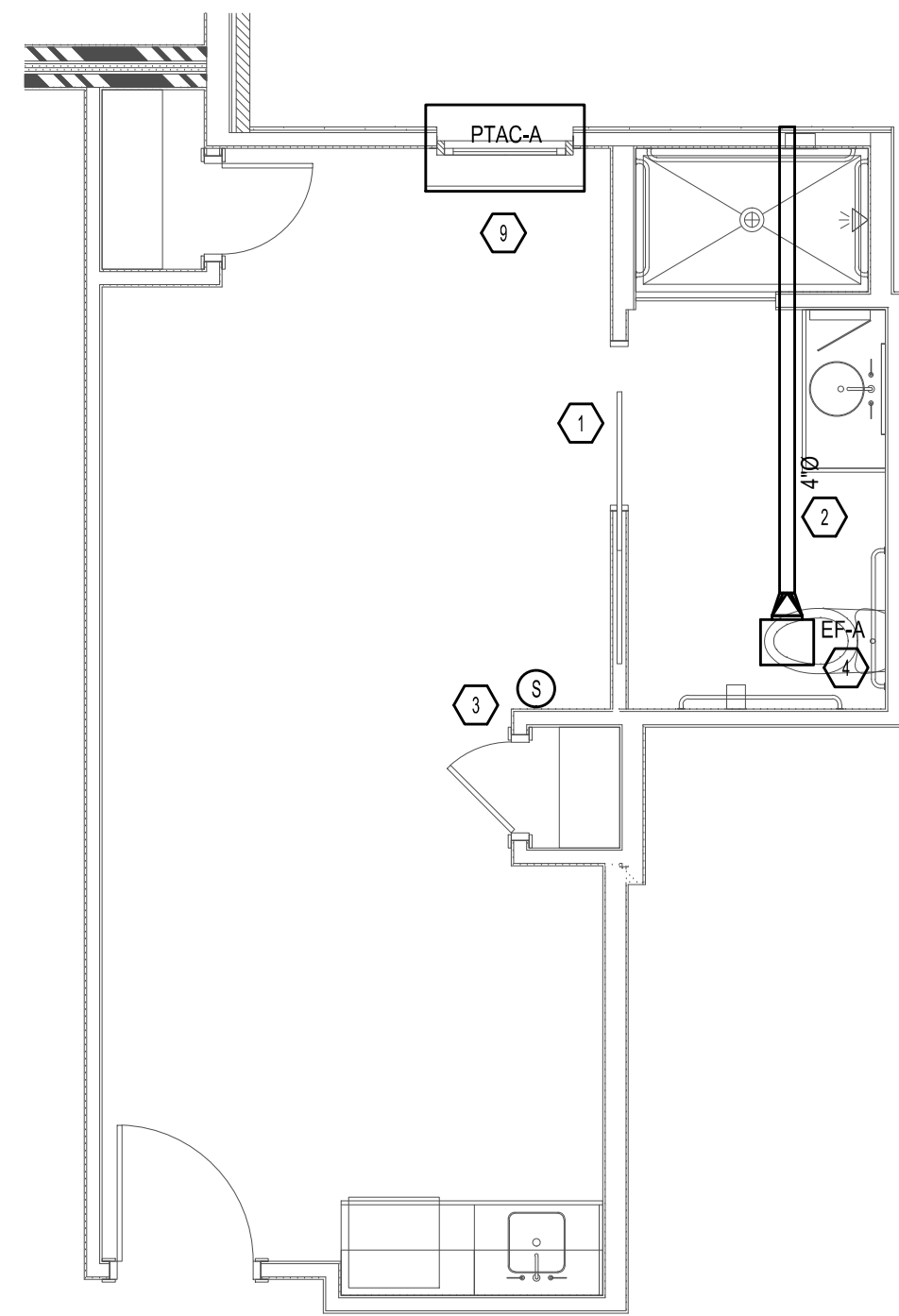
BIM Server: Server2012 - BIM Server (18/07/14017 Concordia Baton Rouge) [Ver: 18.0011 Wednesday, September 02, 2015] 4:04 PM



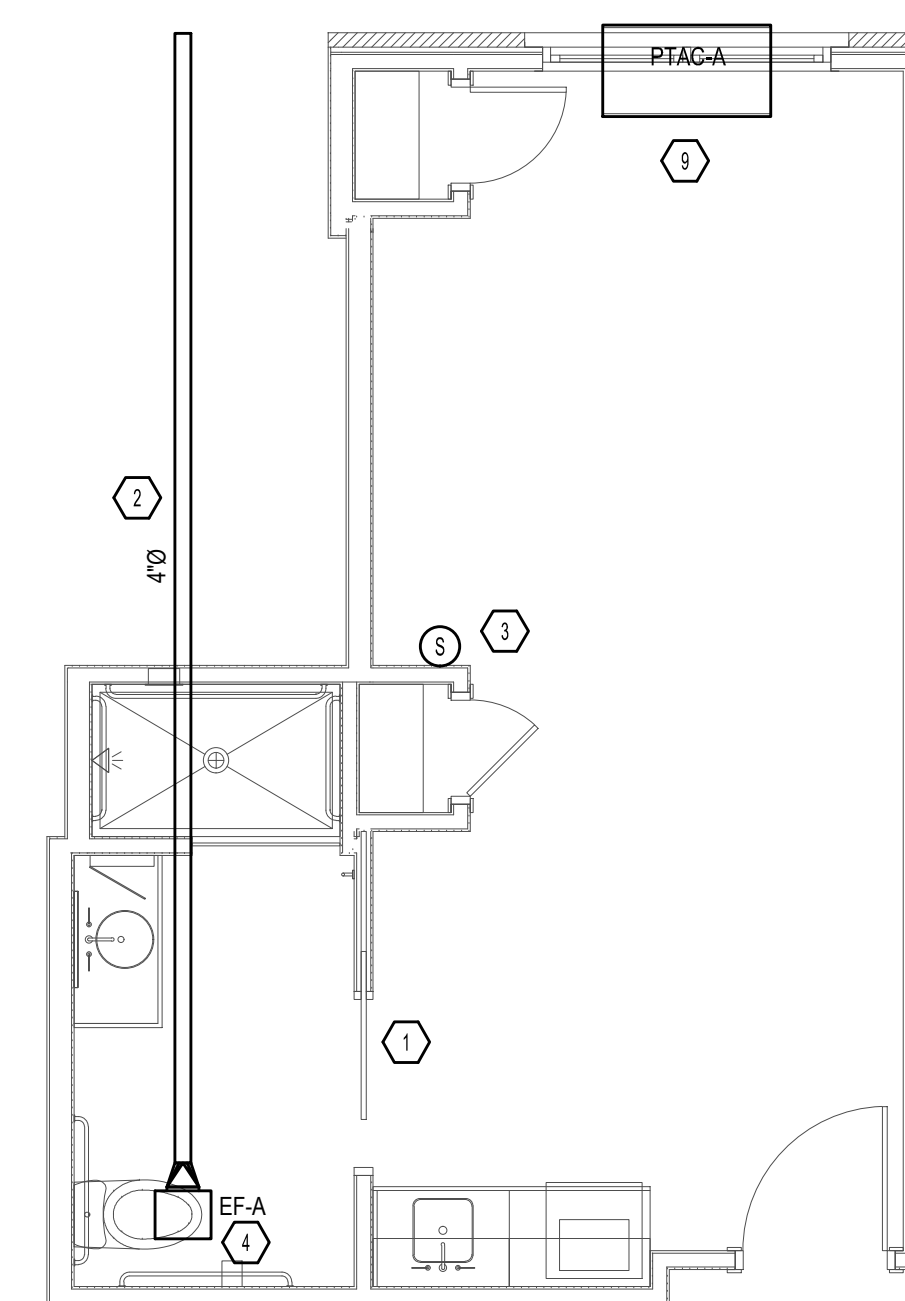
1 | TYPICAL MC UNIT A1.1
M4.1 | 1/4" = 1'-0"



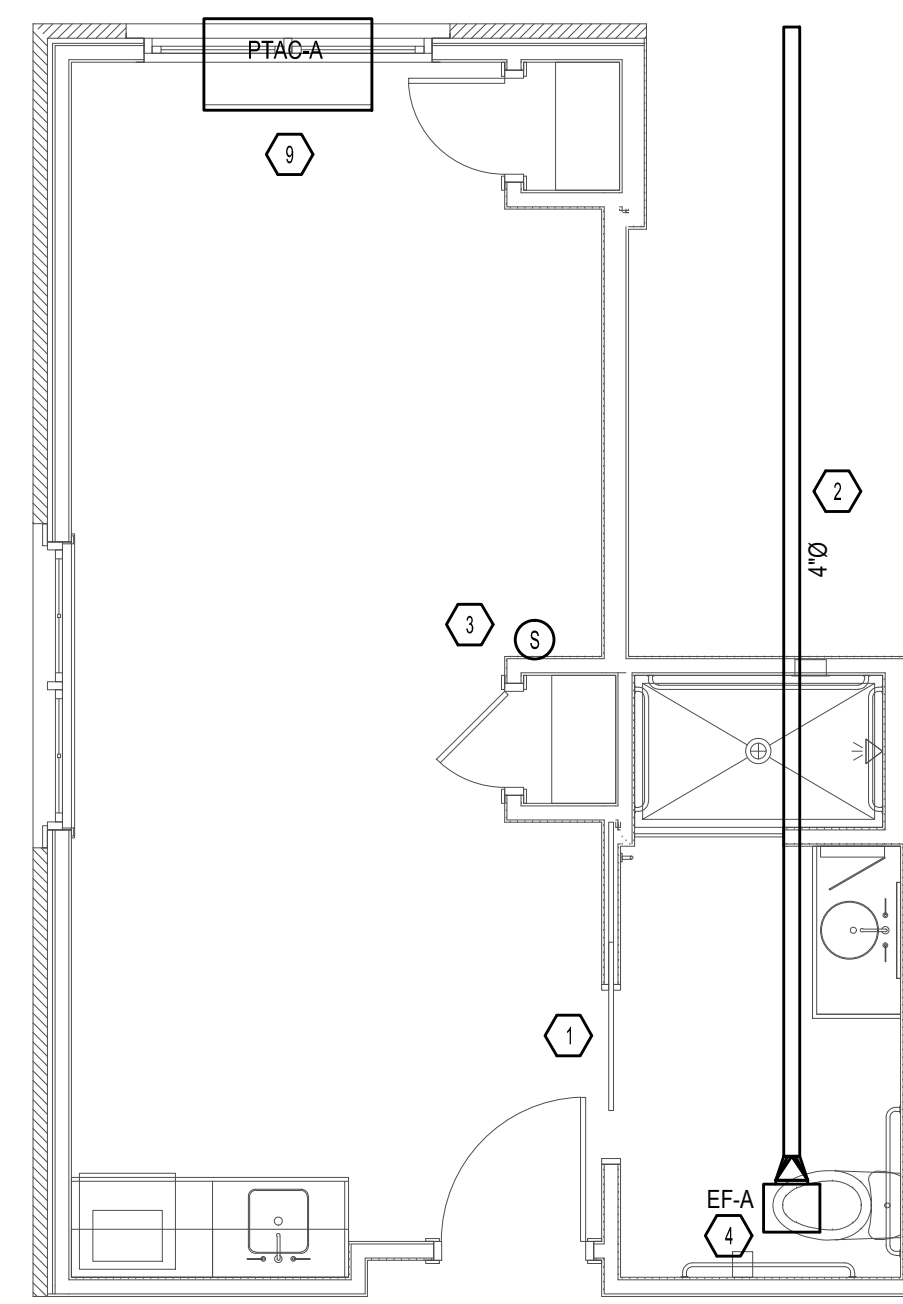
2 | TYPICAL MC UNIT A1.2
M4.1 | 1/4" = 1'-0"



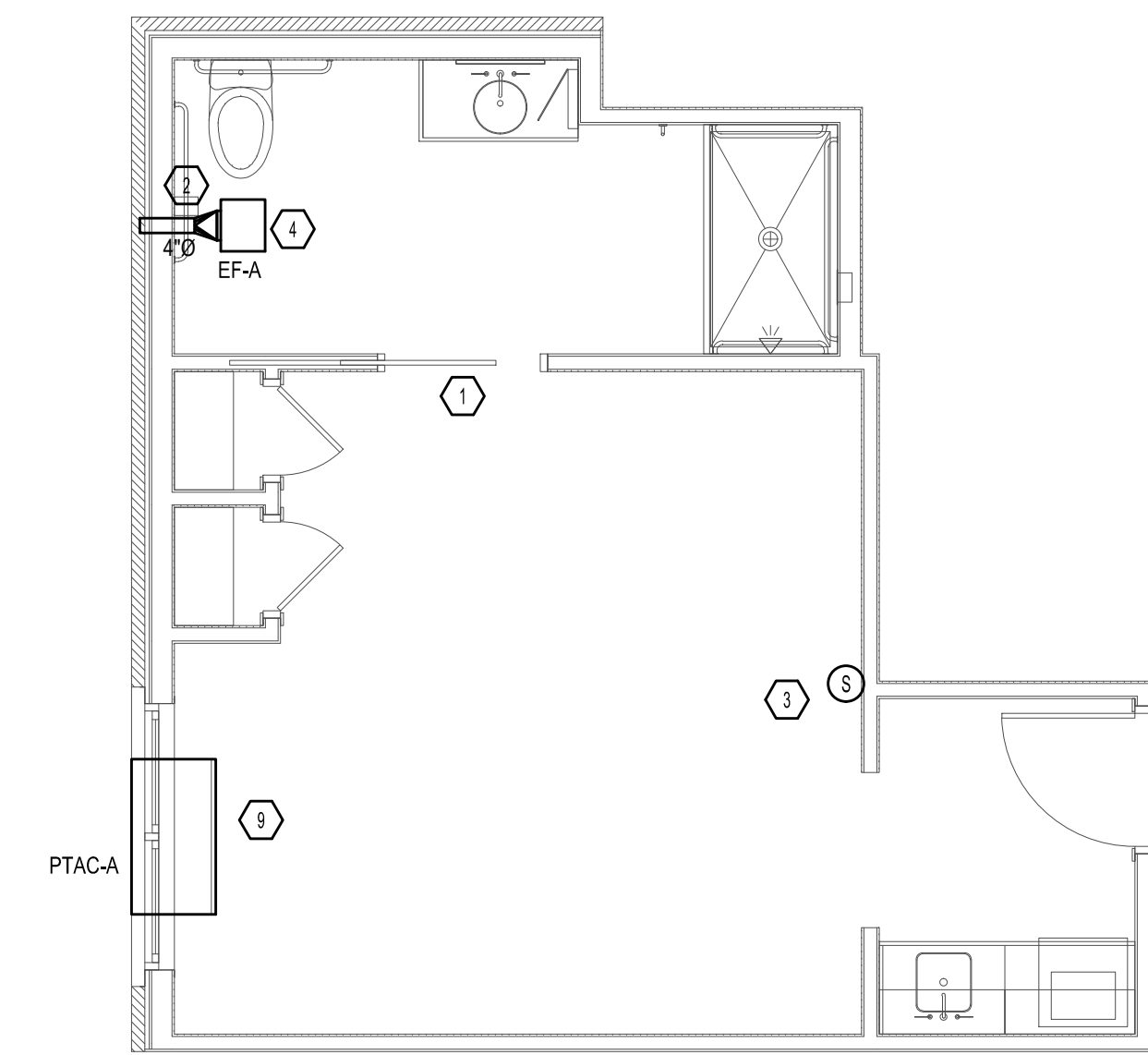
3 | TYPICAL MC UNIT A1.3
M4.1 | 1/4" = 1'-0"



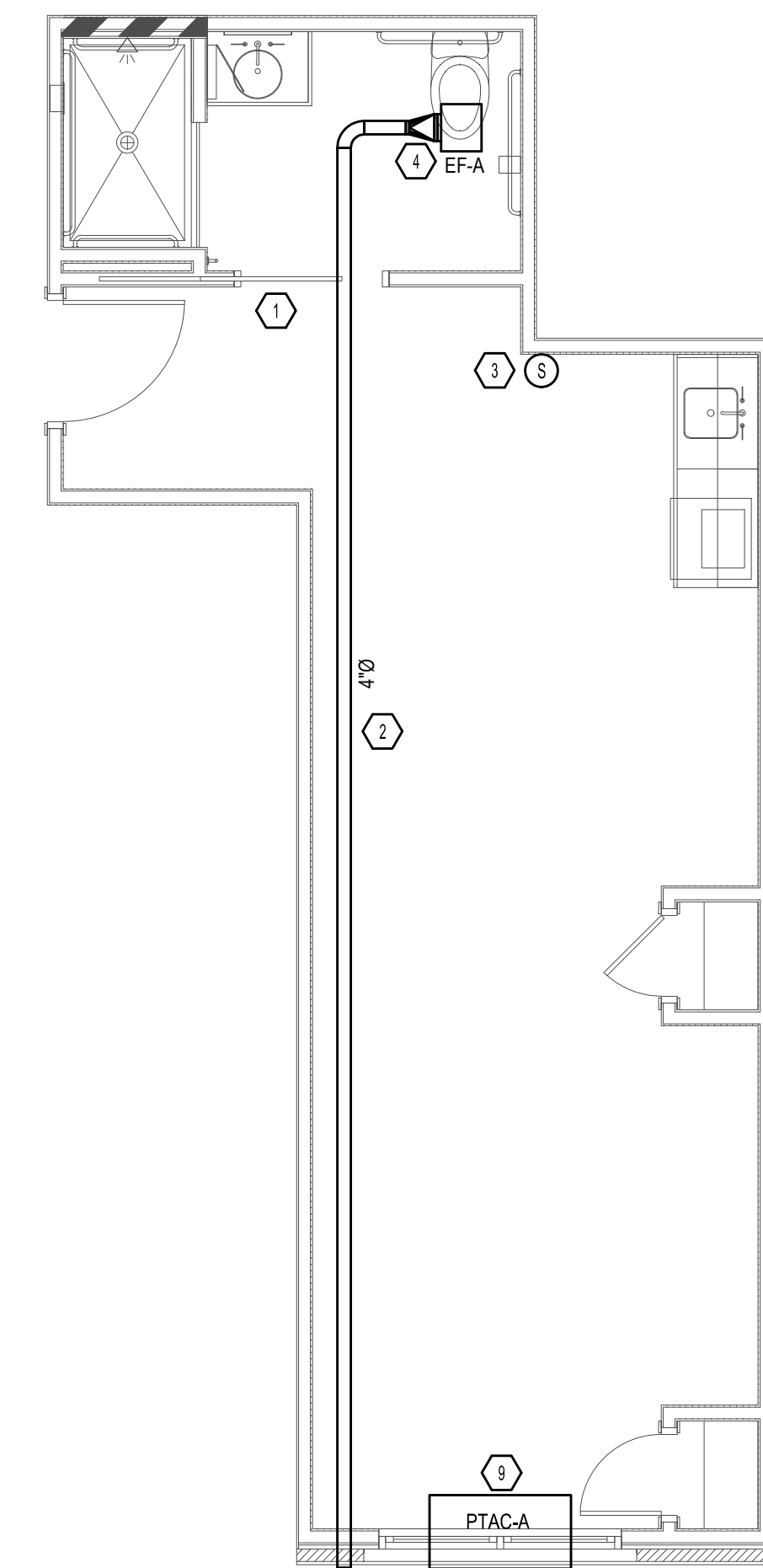
4 | TYPICAL MC UNIT A2.1
M4.1 | 1/4" = 1'-0"



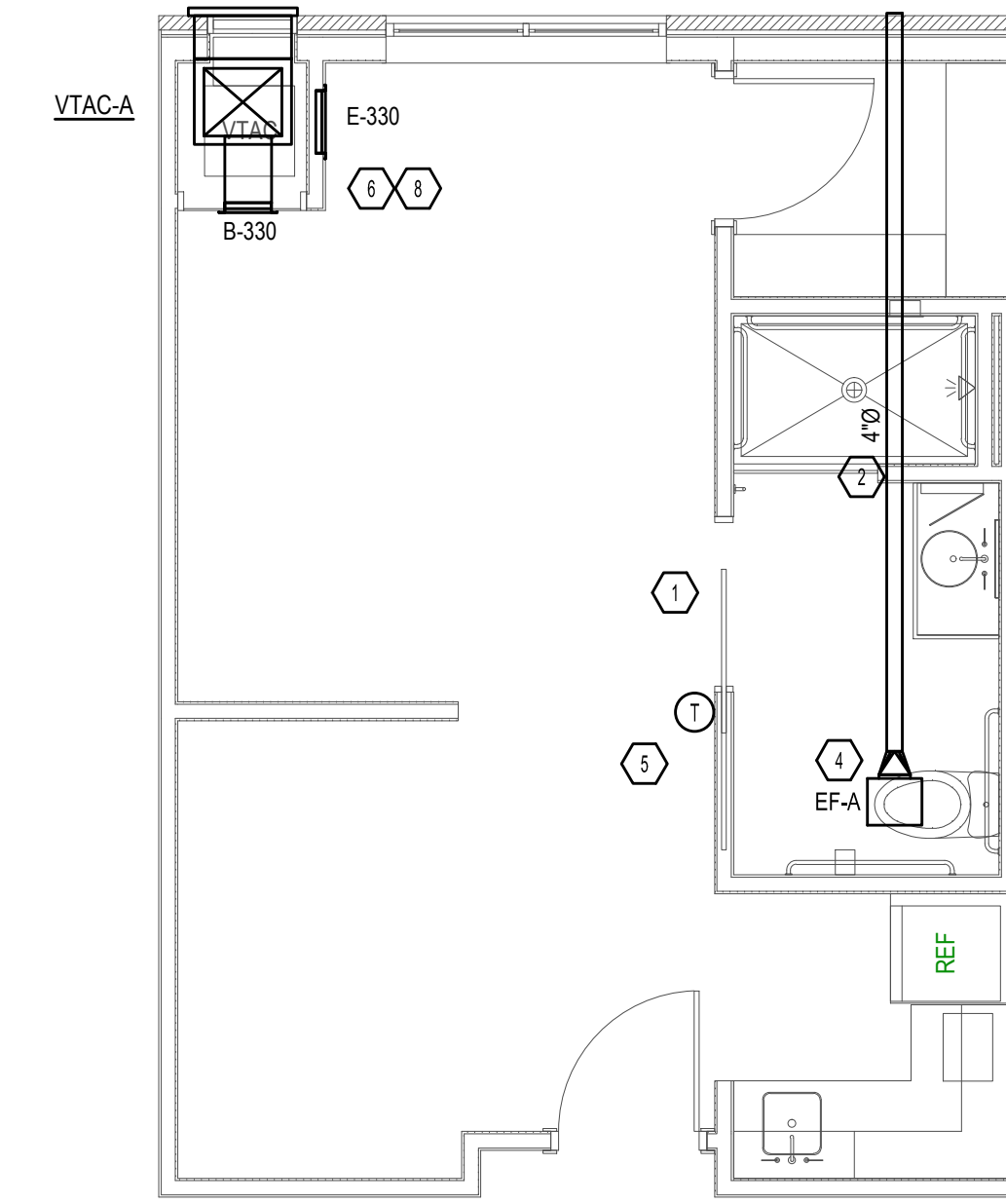
5 | TYPICAL MC UNIT A2.2
M4.1 | 1/4" = 1'-0"



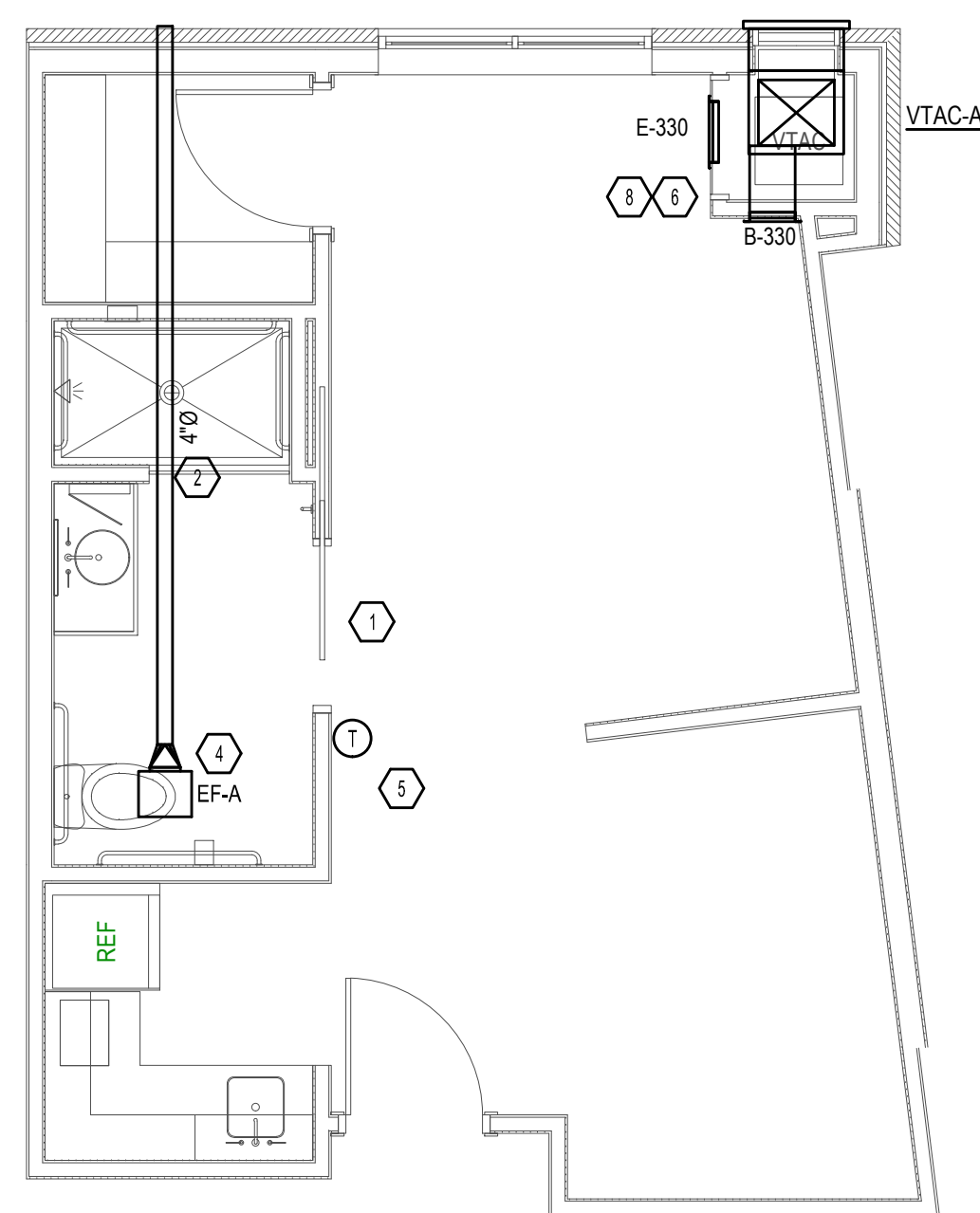
6 | TYPICAL MC UNIT A3
M4.1 | 1/4" = 1'-0"



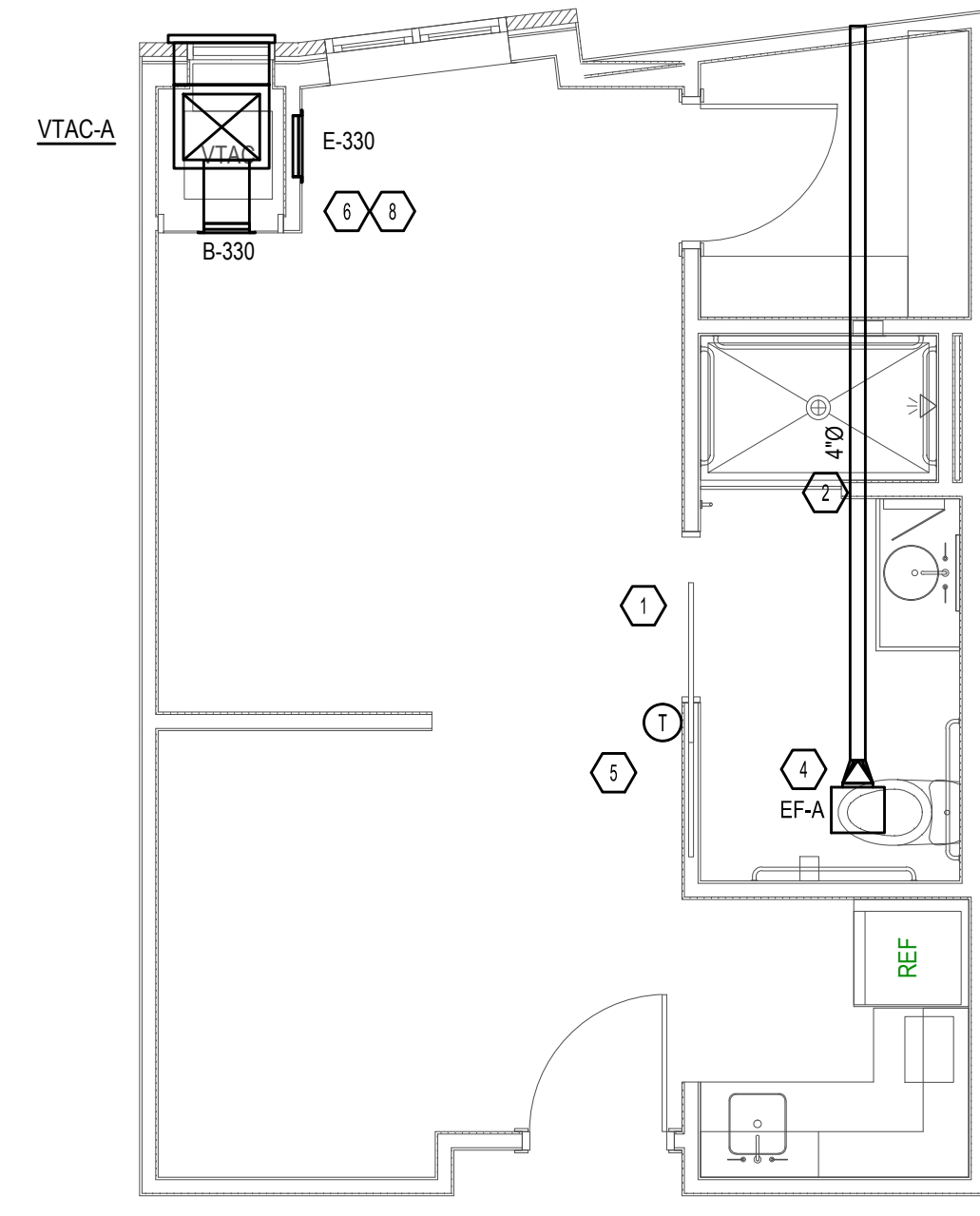
7 | TYPICAL MC UNIT A4
M4.1 | 1/4" = 1'-0"



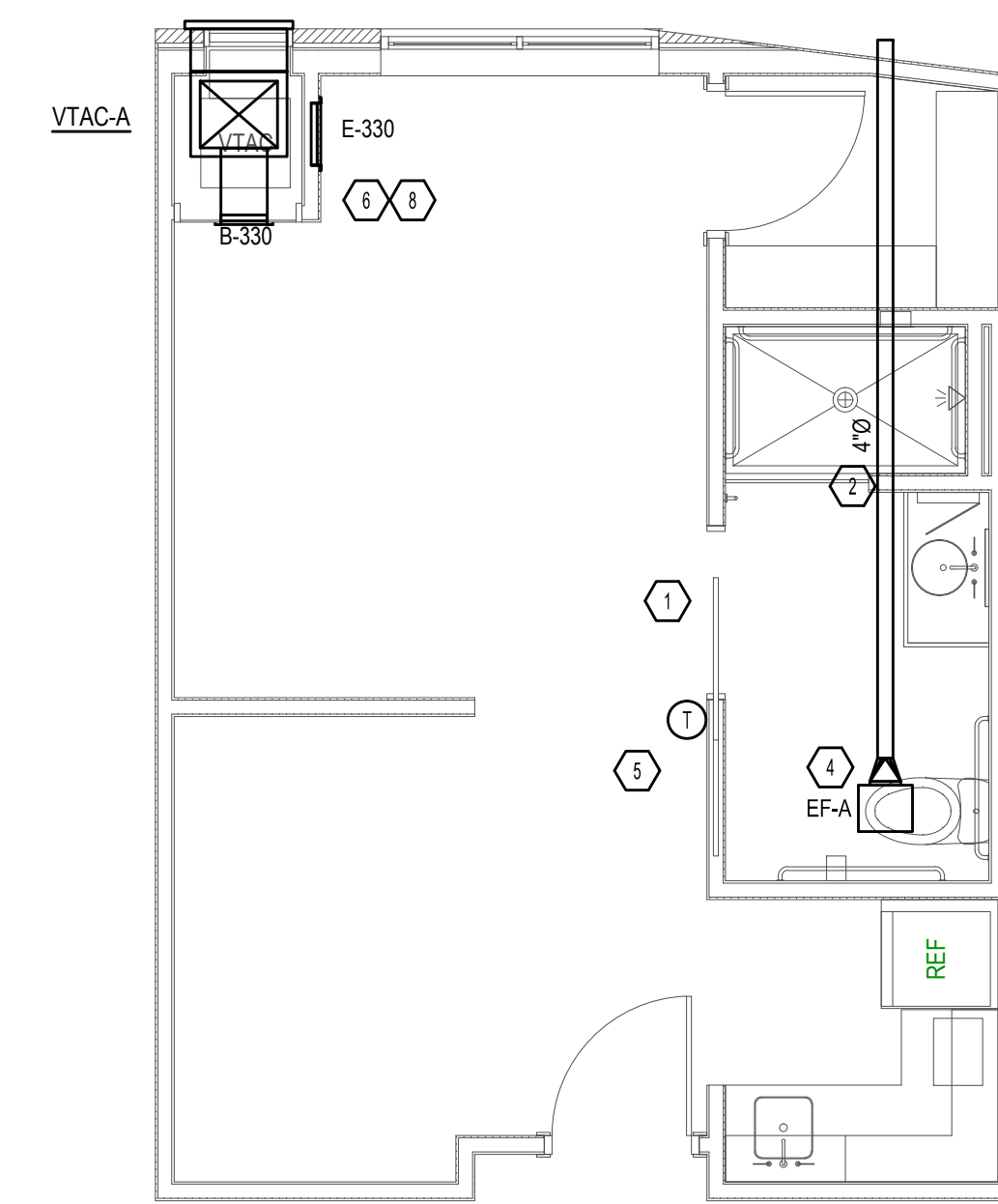
8 | TYPICAL AL UNIT A1.1
M4.1 | 1/4" = 1'-0"



9 | TYPICAL AL UNIT A1.2
M4.1 | 1/4" = 1'-0"



10 | TYPICAL AL UNIT A1.3
M4.1 | 1/4" = 1'-0"



11 | TYPICAL AL UNIT A1.4
M4.1 | 1/4" = 1'-0"

GENERAL NOTES:

- A. REFERENCE MECHANICAL SCHEDULES FOR TAKE-OFF SIZES.
 - B. ROUTE TOILET EXHAUST THROUGH ATTIC UNLESS OTHERWISE NOTED.
 - C. CONTRACTOR SHALL COORDINATE DUCTWORK ROUTING THROUGH ATTIC SPACE TO AVOID STRUCTURAL, ARCHITECTURAL, ELECTRICAL CONFLICT.
 - D. TOILET EXHAUST SHALL HAVE BACKDRAFT DAMPERS.
 - E. COORDINATE ALL TOILET EXHAUST GRILLES WITH WALL CABINETS AND MEDICINE CABINETS.
 - F. THE MECHANICAL CONTRACTOR SHALL COORDINATE THE SUPPLY DUCT DISCHARGE PLENUM AT EACH AIR HANDLER WITH STRUCTURE PRIOR TO INSTALLATION.
 - G. MAINTAIN A MINIMUM OF 3'-0" FROM EXHAUST TO ALL OPERABLE DOOR AND WINDOW OPENINGS.
 - H. ALL TRANSFER GRILLES LOCATED ABOVE BEDROOM DOORS SHALL BE INSTALLED WITH FIN OPENINGS FACING UPWARD.
 - I. MECHANICAL CONTRACTOR SHALL COORDINATE ALL DUCTWORK AND EQUIPMENT IN BATHROOMS WITH PLUMBING.
- PLAN NOTES:**
1. UNDERCUT REST ROOM DOOR 1-1/2".
 2. PROVIDE 4"Ø TOILET EXHAUST ROUTED THRU WALL TO CAP. WALL CAP EQUAL TO DEFLECTO HSBW. COORDINATE COLOR AND EXACT LOCATION PRIOR TO INSTALLATION.
 3. CONTRACTOR SHALL COORDINATE ALL SENSOR LOCATIONS WITH OWNER PRIOR TO CONSTRUCTION. CONTRACTOR SHALL PROVIDE MASTER THERMOSTAT LOCATED AT STAFF STATION. LABEL WITH ROOM NUMBER. COORDINATE EXACT LOCATION WITH OWNER PRIOR TO COMMENCING WORK.
 4. CONTRACTOR SHALL PROVIDE CEILING RATED DAMPER AT SECOND FLOOR AL UNITS OR FIRST FLOOR MC UNITS.
 5. CONTRACTOR SHALL COORDINATE ALL THERMOSTAT LOCATIONS WITH OWNER PRIOR TO CONSTRUCTION.
 6. MECHANICAL CLOSET SHALL BE PLENUM ROOM. ENSURE ALL COMPONENTS INSTALLED ARE PLENUM RATED.
 7. PROVIDE 18"x12" TRANSFER AIR GRILLE. MOUNT HIGH SIDEWALL.
 8. ROUTE 3/4" CONDENSATE IN VTAC CLOSET TO DAYLIGHT NOT CAUSE A NUISANCE PER SECTION 307.2.1 OF THE IMC.
 9. MOUNT PTAC'S ON EXTERIOR WALL. COORDINATE WITH ARCHITECTURAL PLANS FOR EXACT LOCATION.

CONTRACTOR NOTE:

- A. ALL DIFFUSERS, GRILLES, AND EXHAUST FANS PENETRATING CEILING MUST BE PROVIDED WITH CEILING RADIATION DAMPER.

CONTRACTOR NOTE:

IT IS THE RESPONSIBILITY OF THE CONTRACTOR TO NOTIFY THE ARCHITECT, LANDLORD AND TENANT OF ANY DISCREPANCIES ENCOUNTERED ON THE PLANS OR IN EXISTING SITE CONDITIONS PRIOR TO SUBMISSION OF BID.

BIDDERS ARE TO VISIT THE SITE AND FAMILIARIZE THEMSELVES AS TO THE NATURE AND SCOPE OF THE WORK. THE BASE BID SHALL REFLECT MODIFICATIONS TO SYSTEMS AND DEVICES AS REQUIRED BY STATE, LOCAL AND FEDERAL CODES WHETHER INDICATED OR NOT ON CONTRACT DOCUMENTS. THE SUBMISSIONS OF A BID WILL BE EVIDENCE THAT SUCH AN EXAMINATION AND COMPLIANCE WITH GOVERNING CODES/REQUIREMENTS HAS BEEN MADE. LATER CLAIMS FOR LABOR, EQUIPMENT, OR MATERIALS REQUIRED, OR FOR DIFFICULTIES ENCOUNTERED WHICH COULD HAVE BEEN FORESEEN HAD AN EXAMINATION AND CODE/REQUIREMENTS REVIEW BEEN MADE, WILL NOT BE ALLOWED.