

PLAN NOTES:

1. MOUNT AIR HANDLER ABOVE CEILING. COORDINATE ROUTING OF CONDENSATE WITH PLUMBING CONTRACTOR.
2. ROUTE OUTDOOR AIR DUCT UP TO ROOF TO ROOF CAP EQUAL TO GREENCHECK FGI.
3. ROUTE DRYER EXHAUST OUT THRU WALL TO WALL CAP. WALL CAP SHALL BE EQUAL TO DEFLECTO HSB4W. COORDINATE EXACT LOCATION AND COLOR WITH ARCHITECT PRIOR TO INSTALLATION.
4. PROVIDE FLUES FOR WATER HEATERS PER MANUFACTURER'S RECOMMENDATIONS. ROUTE FLUES OUT THRU ROOF AND TERMINATE VIA CONCENTRIC VENT.

CONTRACTOR NOTE:

A. ALL DIFFUSERS, GRILLES, AND EXHAUST FANS PENETRATING CEILING MUST BE PROVIDED WITH CEILING RADIATION DAMPER.

B. PROVIDE MANUAL VOLUME DAMPERS ON ALL SUPPLY AIR BRANCHES AND RETURN AND OUTDOOR AIR DUCT TO BALANCE PER VALUES ON PLANS.

CONTRACTOR NOTE:

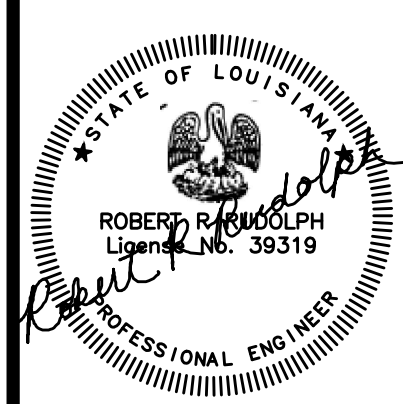
IT IS THE RESPONSIBILITY OF THE CONTRACTOR TO NOTIFY THE ARCHITECT, LANDLORD AND TENANT OF ANY DISCREPANCIES ENCOUNTERED ON THE PLANS OR IN EXISTING SITE CONDITIONS PRIOR TO SUBMISSION OF BID.

BIDDERS ARE TO VISIT THE SITE AND FAMILIARIZE THEMSELVES WITH EXISTING CONDITIONS AND SATISFY THEMSELVES AS TO THE NATURE AND SCOPE OF THE WORK. THE BASE BID SHALL REFLECT MODIFICATIONS TO SYSTEMS AND DEVICES AS REQUIRED BY STATE, LOCAL AND FEDERAL CODES WHETHER INDICATED OR NOT ON CONTRACT DOCUMENTS. THE SUBMISSIONS OF A BID WILL BE EVIDENCE THAT SUCH AN EXAMINATION AND COMPLIANCE WITH GOVERNING CODES/REQUIREMENTS HAS BEEN MADE. LATER CLAIMS FOR LABOR, EQUIPMENT, OR MATERIALS REQUIRED, OR FOR DIFFICULTIES ENCOUNTERED WHICH COULD HAVE BEEN FORESEEN HAD AN EXAMINATION AND CODE/REQUIREMENTS REVIEW BEEN MADE, WILL NOT BE ALLOWED.

pi architects
 3500 Jefferson St. Suite 303
 Austin, TX 78731
 P: (512) 231-1910
 F: (512) 231-1950
 www.piarch.com
 architecture + master
 interior + landscape
 architecture

PE Services
 ENGINEERING FOR THE BUILDING
 1-800-897-0800
 www.pe-services.com

These plans have been properly examined by the undersigned. I have determined that they comply with existing local Louisiana codes, and have been properly site adapted to use in this area.



**WATERSTONE AT BATON ROUGE
 ASSISTED LIVING & MEMORY CARE**

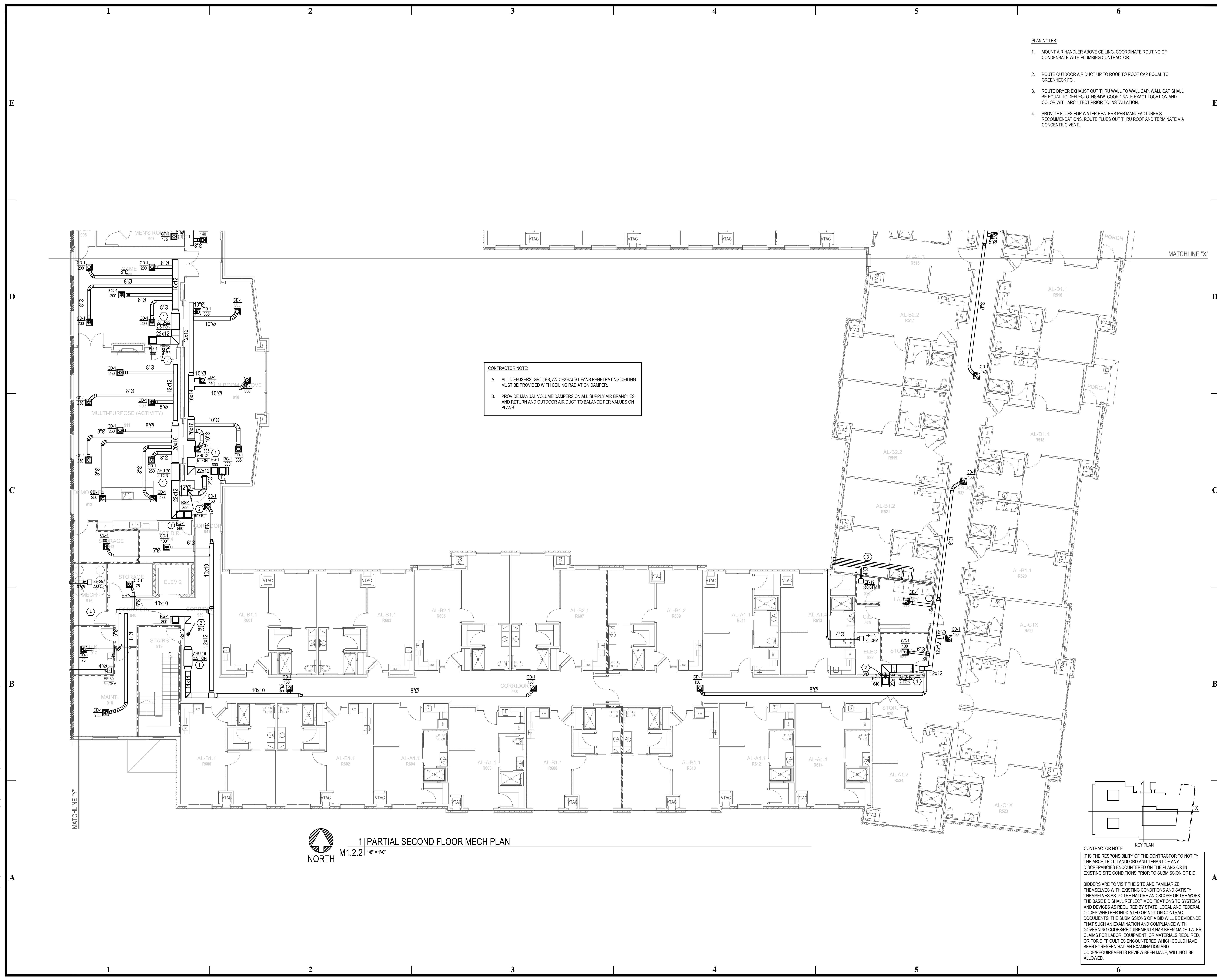
SIEGEN LANE
 BATON ROUGE, LA 70810

ISSUE: PERMIT SET

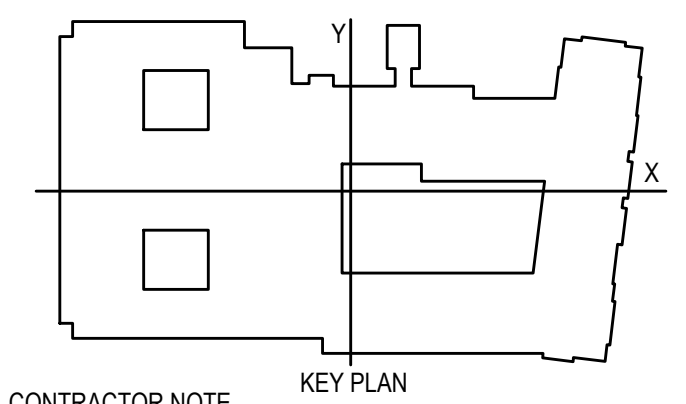
©2015 PI ARCHITECTS, INC.
 REVISIONS:

DATE: 03/31/2016
 PROJECT NUMBER: PES 15090
 SHEET TITLE:
 PARTIAL SECOND FLOOR MECH PLAN

SHEET:
M1.2.2



1 | PARTIAL SECOND FLOOR MECH PLAN
 M1.2.2 | 1/8" = 1'-0"
 NORTH



BIM Server: Server2012 - BIM Server (18/07/14017 Concordia Baton Rouge) | Ver: 18.0011 | Wednesday, September 02, 2015 | 4:04 PM