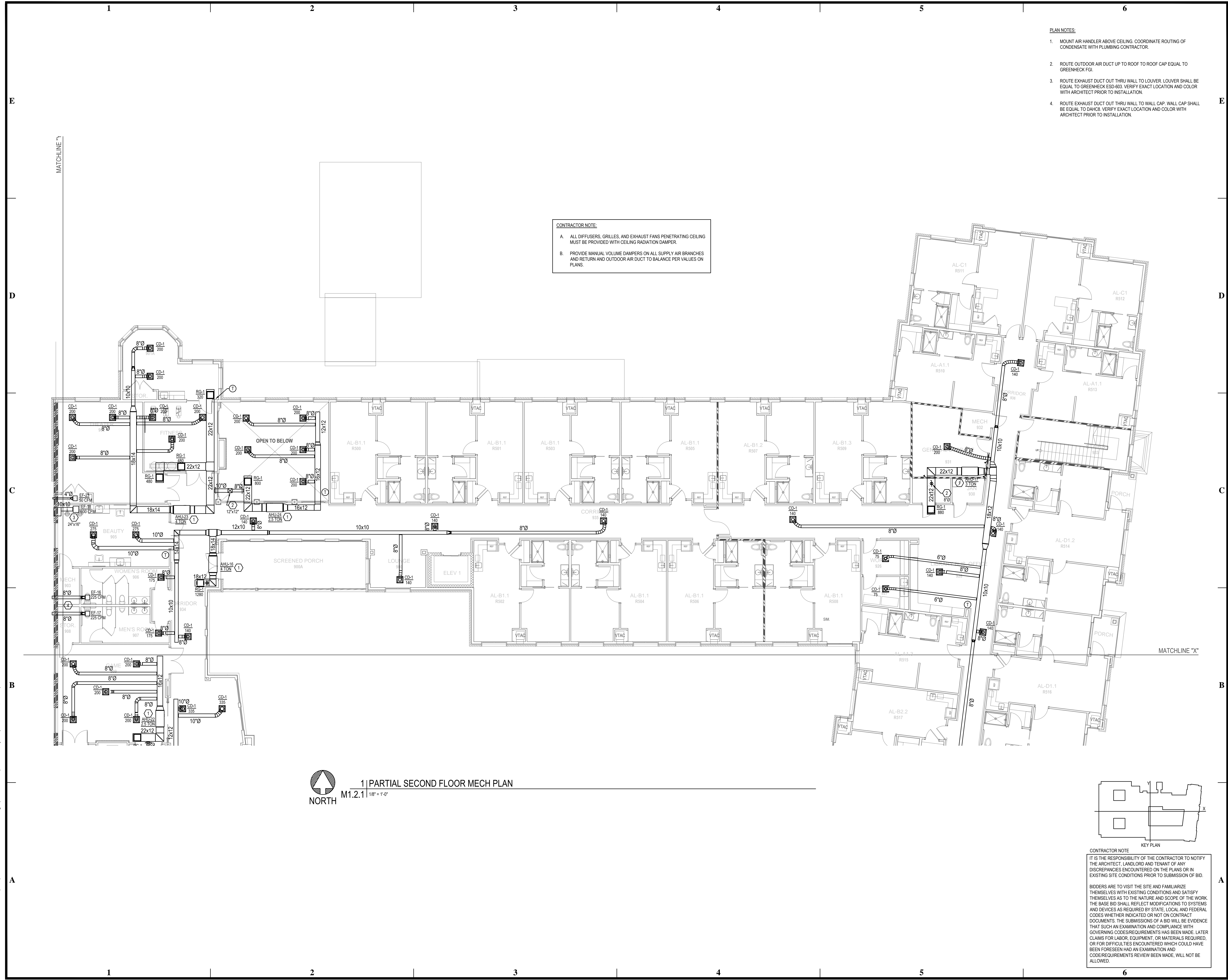


BIM Server: Save/2012 - BIM Server (18/01/14017 Concordia Baton Rouge) Ver: 18.0011 Wednesday, September 02, 2015 1:04 PM

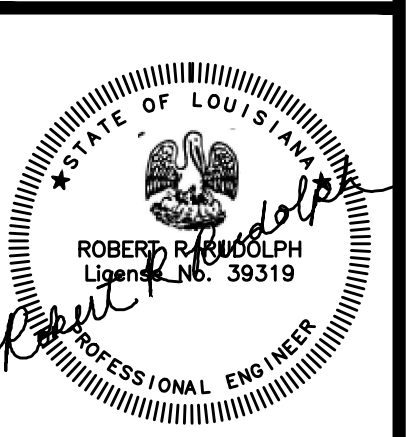


CONTRACTOR NOTE:
A. ALL DIFFUSERS, GRILLES, AND EXHAUST FANS PENETRATING CEILING MUST BE PROVIDED WITH CEILING RADIATION DAMPER.
B. PROVIDE MANUAL VOLUME DAMPERS ON ALL SUPPLY AIR BRANCHES AND RETURN AND OUTDOOR AIR DUCT TO BALANCE PER VALUES ON PLANS.

- PLAN NOTES:**
1. MOUNT AIR HANDLER ABOVE CEILING. COORDINATE ROUTING OF CONDENSATE WITH PLUMBING CONTRACTOR.
 2. ROUTE OUTDOOR AIR DUCT UP TO ROOF TO ROOF CAP EQUAL TO GREENHECK FGI.
 3. ROUTE EXHAUST DUCT OUT THRU WALL TO LOUVER. LOUVER SHALL BE EQUAL TO GREENHECK ESD-603. VERIFY EXACT LOCATION AND COLOR WITH ARCHITECT PRIOR TO INSTALLATION.
 4. ROUTE EXHAUST DUCT OUT THRU WALL TO WALL CAP. WALL CAP SHALL BE EQUAL TO DAH8C. VERIFY EXACT LOCATION AND COLOR WITH ARCHITECT PRIOR TO INSTALLATION.

pi architects
3500 Jefferson St. Suite 303
Austin, TX 78731
P: (512) 231-1910
F: (512) 231-1950
www.piaarch.com
architecture + master
interior + landscape
architecture
PE Services
REGISTERED PROFESSIONAL ENGINEER
www.pe-services.com

These plans have been properly examined by the undersigned. I have determined that they comply with existing local Louisiana codes, and have been properly site adapted to use in this area.



**WATERSTONE AT BATON ROUGE
ASSISTED LIVING & MEMORY CARE**

SIEGEN LANE
BATON ROUGE, LA 70810

ISSUE: PERMIT SET

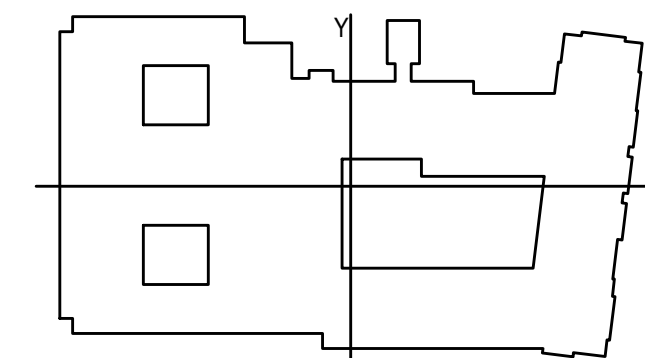
©2015 PI ARCHITECTS, INC.

REVISIONS:

DATE: 03/31/2016
PROJECT NUMBER: PES 15090
SHEET TITLE:
PARTIAL SECOND FLOOR MECH PLAN

SHEET:
M1.2.1

1 | PARTIAL SECOND FLOOR MECH PLAN
M1.2.1 | 1/8" = 1'-0"
NORTH



CONTRACTOR NOTE:
IT IS THE RESPONSIBILITY OF THE CONTRACTOR TO NOTIFY THE ARCHITECT, LANDLORD AND TENANT OF ANY DISCREPANCIES ENCOUNTERED ON THE PLANS OR IN EXISTING SITE CONDITIONS PRIOR TO SUBMISSION OF BID.
BIDDERS ARE TO VISIT THE SITE AND FAMILIARIZE THEMSELVES WITH EXISTING CONDITIONS AND SATISFY THEMSELVES AS TO THE NATURE AND SCOPE OF THE WORK. THE BASE BID SHALL REFLECT MODIFICATIONS TO SYSTEMS AND DEVICES AS REQUIRED BY STATE, LOCAL AND FEDERAL CODES WHETHER INDICATED OR NOT ON CONTRACT DOCUMENTS. THE SUBMISSIONS OF A BID WILL BE EVIDENCE THAT SUCH AN EXAMINATION AND COMPLIANCE WITH GOVERNING CODES/REQUIREMENTS HAS BEEN MADE. LATER CLAIMS FOR LABOR, EQUIPMENT, OR MATERIALS REQUIRED, OR FOR DIFFICULTIES ENCOUNTERED WHICH COULD HAVE BEEN FORESEEN HAD AN EXAMINATION AND CODE/REQUIREMENTS REVIEW BEEN MADE, WILL NOT BE ALLOWED.