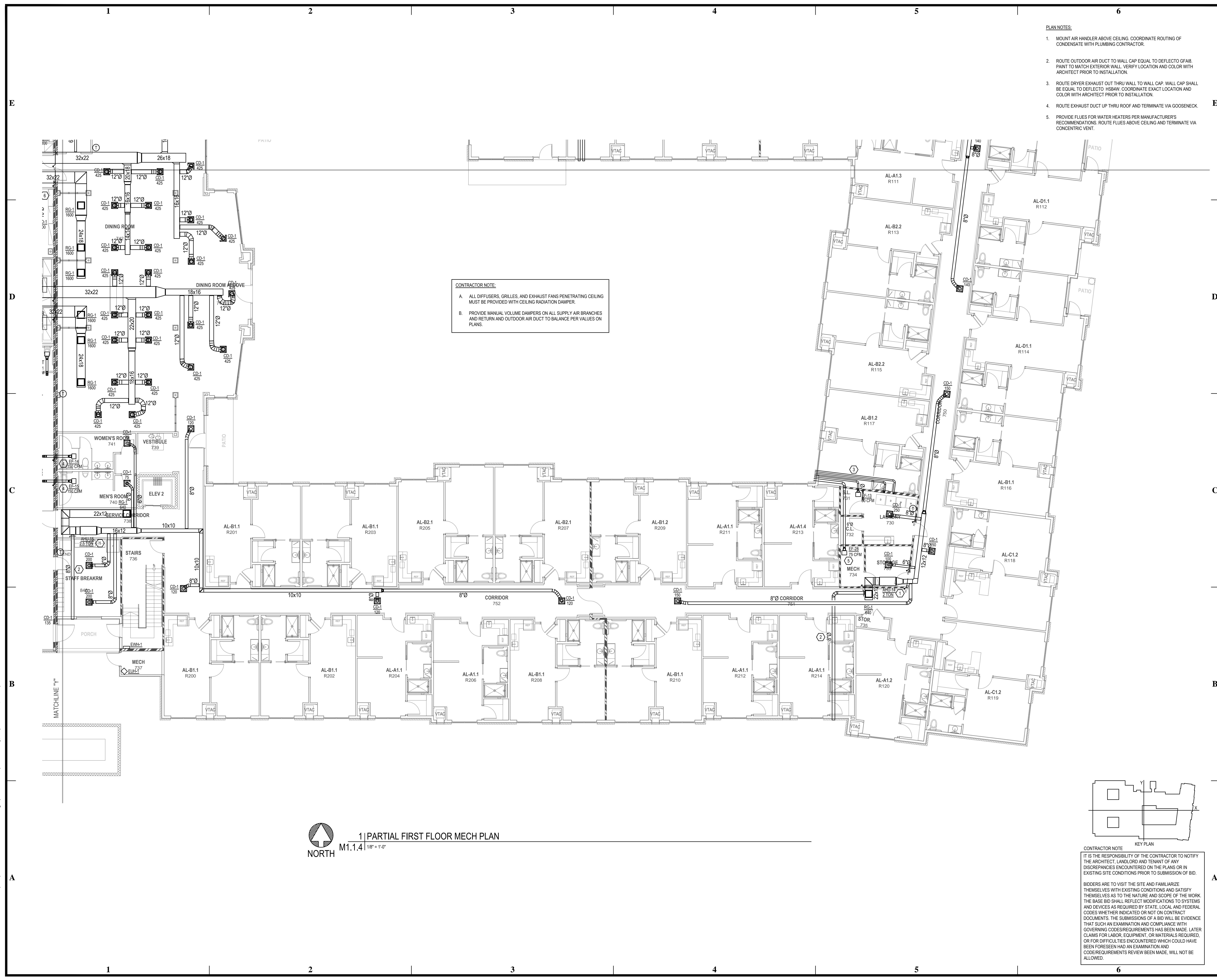


BIM Server: Save/2012 - BIM Server (18/07/14)17 Concordia Baton Rouge | Ver: 18.001 | Wednesday, September 02, 2015 | 4:04 PM

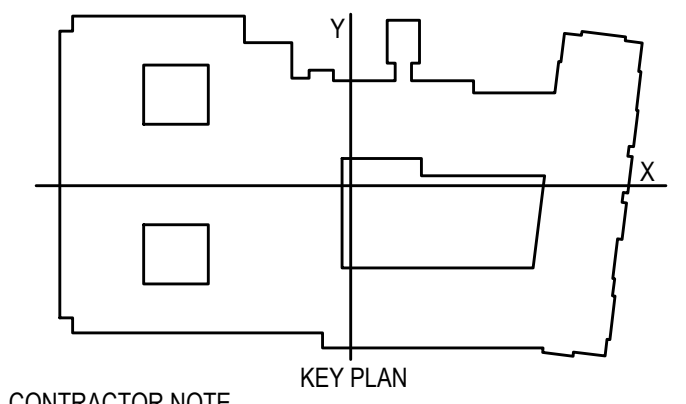


- PLAN NOTES:**
1. MOUNT AIR HANDLER ABOVE CEILING. COORDINATE ROUTING OF CONDENSATE WITH PLUMBING CONTRACTOR.
 2. ROUTE OUTDOOR AIR DUCT TO WALL CAP EQUAL TO DEFLECTO GFA18. PAINT TO MATCH EXTERIOR WALL. VERIFY LOCATION AND COLOR WITH ARCHITECT PRIOR TO INSTALLATION.
 3. ROUTE DRYER EXHAUST OUT THRU WALL TO WALL CAP. WALL CAP SHALL BE EQUAL TO DEFLECTO HSB4W. COORDINATE EXACT LOCATION AND COLOR WITH ARCHITECT PRIOR TO INSTALLATION.
 4. ROUTE EXHAUST DUCT UP THRU ROOF AND TERMINATE VIA GOOSENECK.
 5. PROVIDE FLUES FOR WATER HEATERS PER MANUFACTURER'S RECOMMENDATIONS. ROUTE FLUES ABOVE CEILING AND TERMINATE VIA CONCENTRIC VENT.

CONTRACTOR NOTE:

- A. ALL DIFFUSERS, GRILLES, AND EXHAUST FANS PENETRATING CEILING MUST BE PROVIDED WITH CEILING RADIATION DAMPER.
- B. PROVIDE MANUAL VOLUME DAMPERS ON ALL SUPPLY AIR BRANCHES AND RETURN AND OUTDOOR AIR DUCT TO BALANCE PER VALUES ON PLANS.

1 | PARTIAL FIRST FLOOR MECH PLAN
M1.1.4 | 1/8" = 1'-0"
NORTH



CONTRACTOR NOTE:

IT IS THE RESPONSIBILITY OF THE CONTRACTOR TO NOTIFY THE ARCHITECT, LANDLORD AND TENANT OF ANY DISCREPANCIES ENCOUNTERED ON THE PLANS OR IN EXISTING SITE CONDITIONS PRIOR TO SUBMISSION OF BID.

BIDDERS ARE TO VISIT THE SITE AND FAMILIARIZE THEMSELVES WITH EXISTING CONDITIONS AND SATISFY THEMSELVES AS TO THE NATURE AND SCOPE OF THE WORK. THE BASE BID SHALL REFLECT MODIFICATIONS TO SYSTEMS AND DEVICES AS REQUIRED BY STATE, LOCAL AND FEDERAL CODES WHETHER INDICATED OR NOT ON CONTRACT DOCUMENTS. THE SUBMISSIONS OF A BID WILL BE EVIDENCE THAT SUCH AN EXAMINATION AND COMPLIANCE WITH GOVERNING CODES/REQUIREMENTS HAS BEEN MADE. LATER CLAIMS FOR LABOR, EQUIPMENT, OR MATERIALS REQUIRED, OR FOR DIFFICULTIES ENCOUNTERED WHICH COULD HAVE BEEN FORESEEN HAD AN EXAMINATION AND CODE/REQUIREMENTS REVIEW BEEN MADE, WILL NOT BE ALLOWED.

pi architects
3500 Jefferson St. Suite 303
Austin, TX 78731
P: (512) 231-1910
F: (512) 231-1950
www.piarch.com
architecture + master
interior planning + landscape
architecture

PE Services
PROFESSIONAL ENGINEERING
www.pe-services.com
These plans have been properly examined by the undersigned. I have determined that they comply with existing local Louisiana codes, and have been properly site adapted to use in this area.

STATE OF LOUISIANA
ROBERT M. HODGSON
Lic. No. 39319
PROFESSIONAL ENGINEER

**WATERSTONE AT BATON ROUGE
ASSISTED LIVING & MEMORY CARE**
SIEGEN LANE
BATON ROUGE, LA 70810

ISSUE: PERMIT SET

©2015 PI ARCHITECTS, INC.
REVISIONS:

DATE: 03/31/2016
PROJECT NUMBER: PES 15090
SHEET TITLE:
PARTIAL FIRST FLOOR MECH PLAN

SHEET:
M1.1.4