

1 2 3 4 5 6

E

D

C

B

A

E

D

C

B

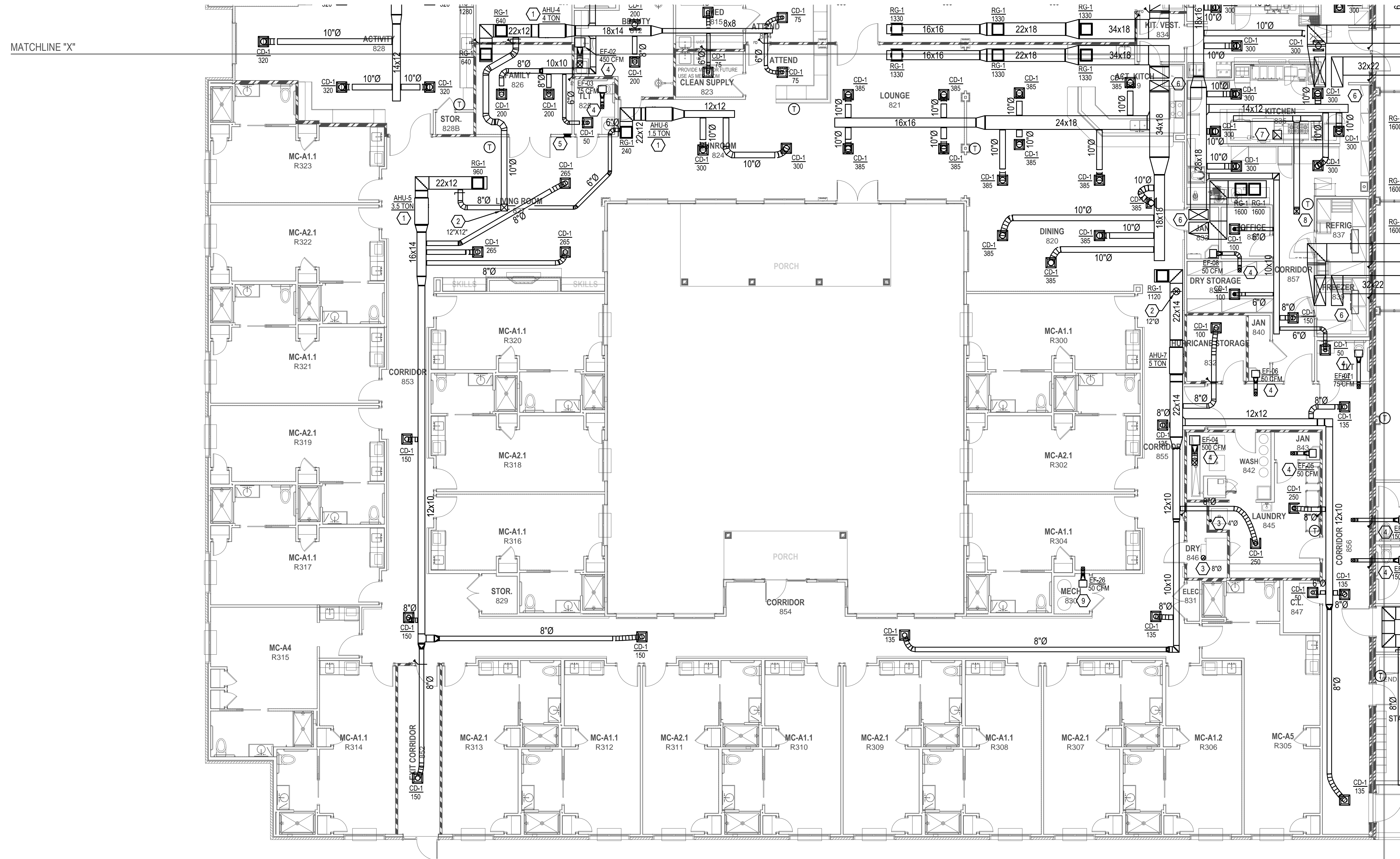
A

PLAN NOTES:

1. MOUNT AIR HANDLER ABOVE CEILING. COORDINATE ROUTING OF CONDENSATE WITH PLUMBING CONTRACTOR.
2. ROUTE OUTDOOR AIR DUCT UP TO ROOF TO ROOF CAP EQUAL TO GREENHECK FGI.
3. ROUTE DRYER EXHAUST OUT THRU ROOF AND TERMINATE VIA GOOSENECK.
4. ROUTE EXHAUST DUCT UP THRU ROOF AND TERMINATE VIA GOOSENECK.
5. PROVIDE 10x6 TRANSFER GRILLE AS HIGH AS POSSIBLE. COORDINATE COLOR WITH ARCHITECT PRIOR TO INSTALLATION.
6. SUPPLY AND RETURN DUCT UP TO ROOF TOP UNIT. REFER TO ROOF PLAN FOR CONTINUATION.
7. HOOD EXHAUST UP THRU ROOF. REFER TO KITCHEN SUPPLIER DRAWINGS FOR EQUIPMENT AND EXACT SIZES.
8. DUCT UP THRU ROOF TO MAKE-UP AIR UNIT. REFER TO KITCHEN SUPPLIER DRAWINGS FOR EQUIPMENT AND EXACT SIZES.
9. PROVIDE FLUES FOR WATER HEATERS PER MANUFACTURER'S RECOMMENDATIONS. ROUTE FLUES OUT THRU ROOF AND TERMINATE VIA CONCENTRIC VENT.

CONTRACTOR NOTE:

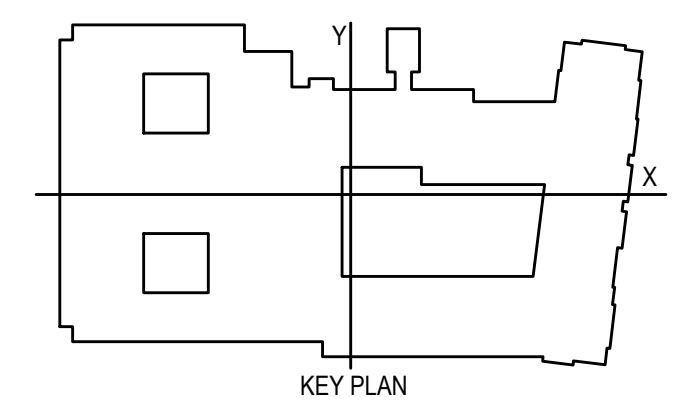
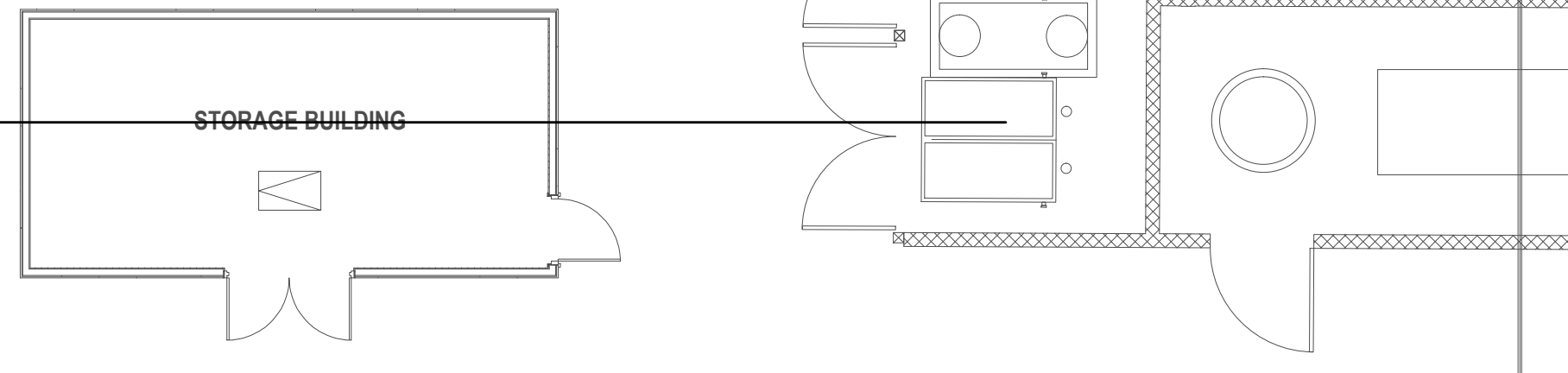
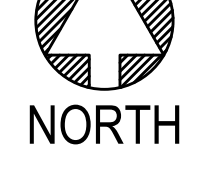
- A. ALL DIFFUSERS, GRILLES, AND EXHAUST FANS PENETRATING CEILING MUST BE PROVIDED WITH CEILING RADIATION DAMPER.
- B. PROVIDE MANUAL VOLUME DAMPERS ON ALL SUPPLY AIR BRANCHES AND RETURN AND OUTDOOR AIR DUCT TO BALANCE PER VALUES ON PLANS.



MATCHLINE "X"

MATCHLINE "Y"

1 | PARTIAL FIRST FLOOR MECH PLAN
 M1.1.3 1/8" = 1'-0"



CONTRACTOR NOTE:

IT IS THE RESPONSIBILITY OF THE CONTRACTOR TO NOTIFY THE ARCHITECT, LANDLORD AND TENANT OF ANY DISCREPANCIES ENCOUNTERED ON THE PLANS OR IN EXISTING SITE CONDITIONS PRIOR TO SUBMISSION OF BID.

BIDDERS ARE TO VISIT THE SITE AND FAMILIARIZE THEMSELVES WITH EXISTING CONDITIONS AND SATISFY THEMSELVES AS TO THE NATURE AND SCOPE OF THE WORK. THE BASE BID SHALL REFLECT MODIFICATIONS TO SYSTEMS AND DEVICES AS REQUIRED BY STATE, LOCAL AND FEDERAL CODES WHETHER INDICATED OR NOT ON CONTRACT DOCUMENTS. THE SUBMISSIONS OF A BID WILL BE EVIDENCE THAT SUCH AN EXAMINATION AND COMPLIANCE WITH GOVERNING CODES/REQUIREMENTS HAS BEEN MADE. LATER CLAIMS FOR LABOR, EQUIPMENT, OR MATERIALS REQUIRED, OR FOR DIFFICULTIES ENCOUNTERED WHICH COULD HAVE BEEN FORESEEN HAD AN EXAMINATION AND CODE/REQUIREMENTS REVIEW BEEN MADE, WILL NOT BE ALLOWED.

pi architects
 3500 Jefferson St. Suite 303
 Austin, TX 78731
 P: (512) 231-1910
 F: (512) 231-1950

www.piarch.com
 architecture + master
 interior + landscape
 architecture

PE Services
 REGISTERED PROFESSIONAL ENGINEER
 LICENSE NO. 39319

These plans have been properly examined by the undersigned. I have determined that they comply with existing local Louisiana codes, and have been properly site adapted to use in this area.

STATE OF LOUISIANA
 ROBERT M. GIBSON
 LICENSE NO. 39319
 PROFESSIONAL ENGINEER

**WATERSTONE AT BATON ROUGE
 ASSISTED LIVING & MEMORY CARE**

SIEGEN LANE
 BATON ROUGE, LA 70810

ISSUE: PERMIT SET

©2015 PI ARCHITECTS, INC.
 REVISIONS:

DATE: 03/31/2016
 PROJECT NUMBER: PES 15090
 SHEET TITLE: PARTIAL FIRST FLOOR MECH PLAN
 SHEET: M1.1.3

BIM Server: Server2012 - BIM Server (18/07/14017 Concordia Baton Rouge) Ver: 18.0011 Wednesday, September 02, 2015 1:04 PM